



JERRY WYMAN
 975 hillcroft circle
 oakland, ca 94610
 (510) 893-5840
 fax (510) 893-5841
 jerry@jerrywyman.com
 sign consulting

Project:
 Lemoine Ranch
 Monument Entry

Project # 1835

Address:
 4456 Foothill Rd.
 Pleasanton, CA

3-18-10

Revisions:
 3-23-10
 5-14-10

Scale:
 AS NOTED

Sheet No.:
 1 OF 3

This is an unapproved drawing created by Jerry Wyman Sign Consulting (JWSC). It is intended for your review. It is not to be shown to anyone outside of your organization, nor is it to be reproduced, copied or published in any fashion. The changing of colors, sizes, materials or dimensions without client approval after the date of creation of this drawing is not the responsibility of JWSC. Attribution to our firm design in any fashion must be obtained in writing from JWSC.

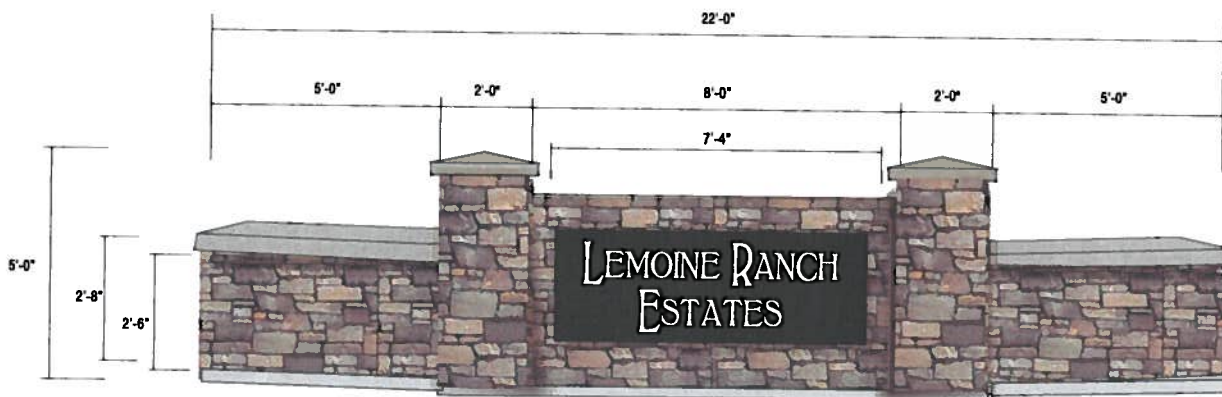


PSDR - 453
RECEIVED

MAY 11 2010

CITY OF PLEASANTON
 PLANNING DIVISION

EXHIBIT B



NEW S/F MONUMENT SIGN

1/2" = 1'-0"

**CINDER BLOCK CONSTRUCTION MONUMENT SIGN.
 BODY AND COLUMNS CLAD WITH CULTURED STONE (ANDANTE FIELD STONE)
 CORNICES AND CAPS TO BE PAINTED SATIN TO MATCH COLOR
 IDENTITY TO BE 1" DEEP ALUM PAN WITH 3/4" DEEP DIMENSIONAL LETTERS
 MONUMENT TO BE INSTALLED ONTO CONCRETE PAD.
 MONUMENT SIGN TO BE EXTERNALLY ILLUMINATED WITH SPOT LIGHTS**



JERRY WYMAN
 975 hillcroft circle
 oakland, ca 94610
 (510) 893-5840
 fax (510) 893-5841
 jerry@jerrywyman.com
 sign consulting

Project:
 Lemoine Ranch
 Monument Entry

Project # 1835

Address:
 4456 Foothill Rd.
 Pleasanton, CA

3-18-10

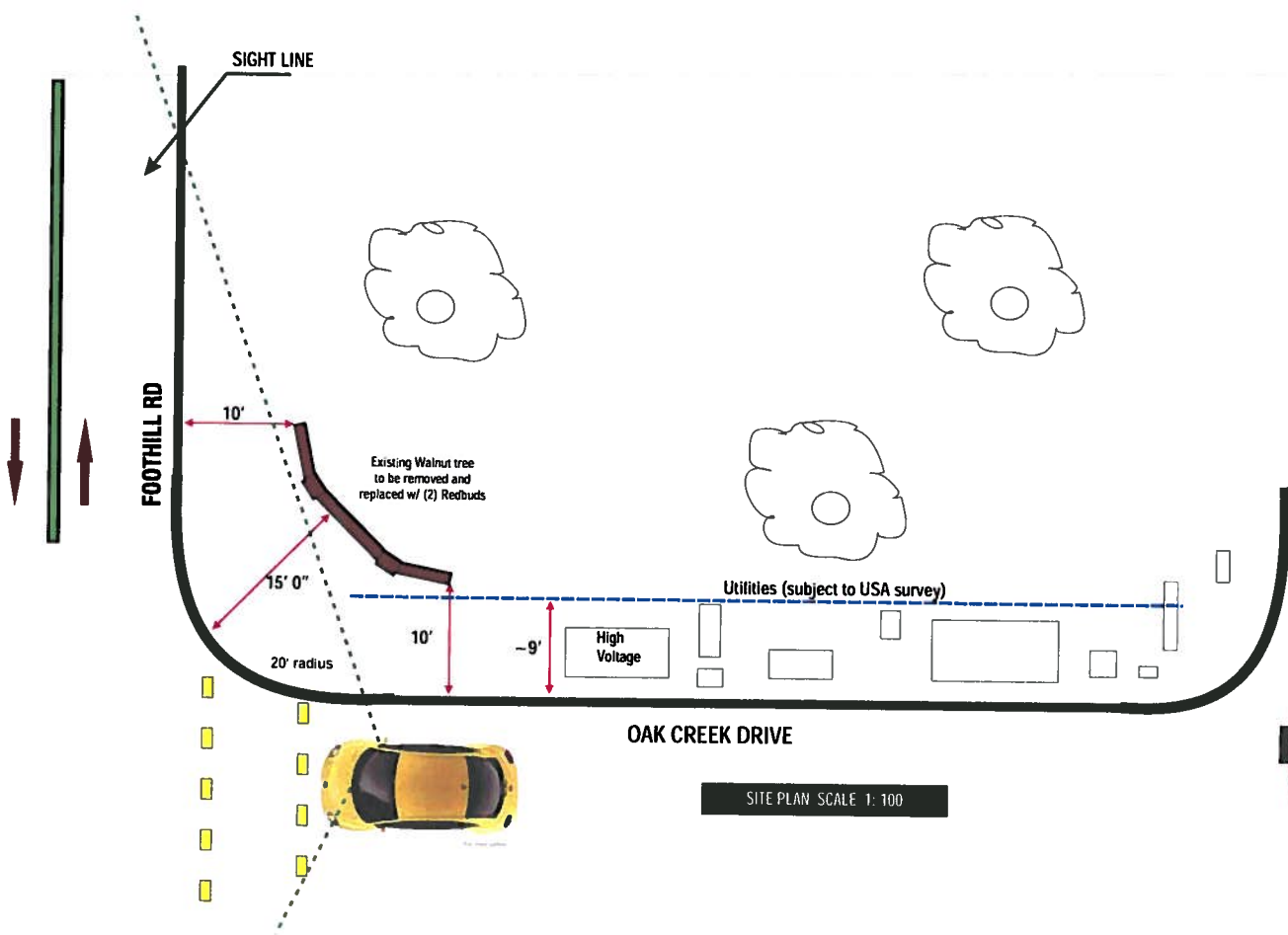
Revisions:
 3-23-10
 5-14-10

Scale:
 AS NOTED

Sheet No.:
 2 OF 3

This is an original unapproved drawing created by Jerry Wyman Sign Consulting (JWSC). It is intended for your review. It is not to be shown to anyone outside of your organization, nor is it to be reproduced, copied or exhibited in any form. The changing of notes, sizes, materials or dimensions without review and after the date. Accuracy of this drawing is held by JWSC. Authorization to use this drawing in any form must be obtained by writing Jerry JWSC.





JERRY WYMAN
 975 hillcroft circle
 oakland, ca 94610
 (510) 893-5840
 fax (510) 893-5841
 jerry@jerrywyman.com
 jw consulting

Project:
 Lemoine Ranch
 Monume Entry

Project # 1835

Address:
 4456 Foothill Rd.
 Pleasanton, CA

3-18-10

Revisions:
 3-23-10
 5-14-10

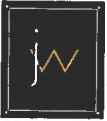
Scale:
 AS NOTED

Sheet No.:
 3 OF 3



This is an original unregistered drawing created by Jerry Wyman Site Consulting (JWSC). It is submitted for your review. It is not to be shown to anyone outside of your organization, nor is it to be reproduced, copied or exhibited in any fashion. The changing of notes, sheets, materials or dimensions without being noted after the date. Accuracy of this design is held by JWSC. Authorization to use this design in any fashion must be obtained by writing Jerry JWSC.





975 hilcroft circle
oakland, ca 94610
(510) 893-5840
fax (510) 893-5841
jerry@jerrywatts.com

Graphic presentation only. Please confirm actual colors & materials.

JOB NUMBER	10345
CLIENT	LEMOINE RANCH
CLIENT ADDRESS	4456 FOOTHILL RD. PLEASANTON, CA
DRAWING NUMBER	JW 1835
PHASE	DESIGN
FABRICATION	
DESIGNED/REVISED BY/DATE	JW/PLG/C
SALES ASSOCIATE	JC HLEPP

CLIENT APPROVAL
INCLUDES COLORS,
SPELLING, ARTWORK

PLEASE INITIAL:

PLEASE DATE:

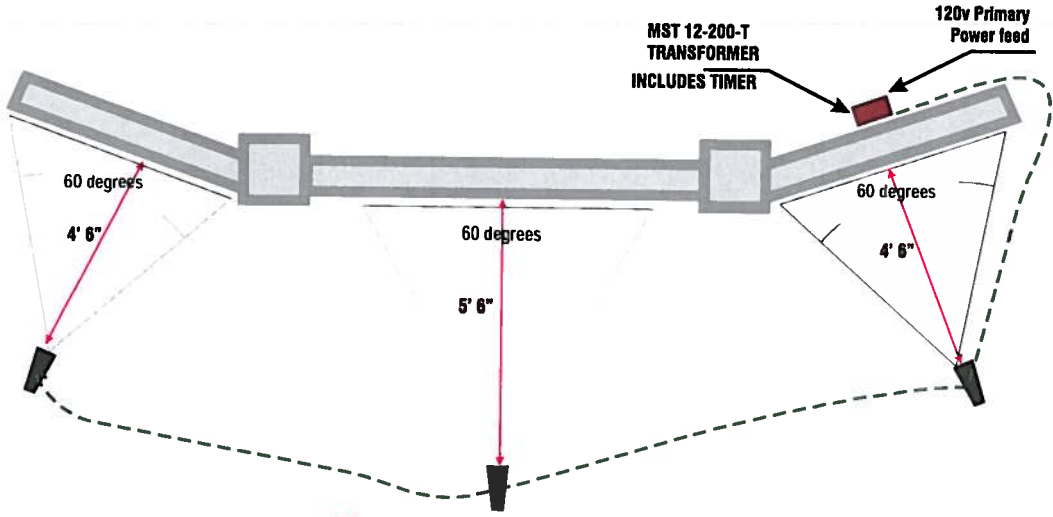
HUPP
DESIGN
MANUFACTURE
INSTALLATION
SERVICE

78 LARSEN AVE.
CONRO, CA. 94529

PHONE
925.348.7970
925.348.8298

FAX
925.348.8224

PAGE 1 OF 1



**FOCUS INDUSTRIES
DL-20-MR16-BAT
BRASS FIXTURE W/
BLACK FINISH**

**GROUND SPIKE
FOCUS FA-03-SRS**

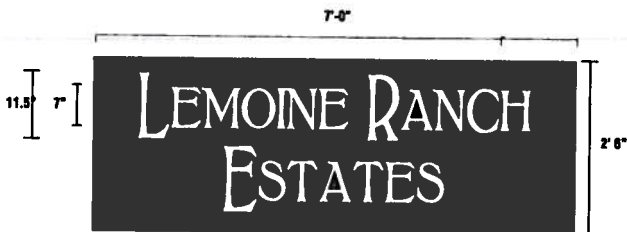
(3) REQ'D

(3) MR-16 75 w LAMPS REQ'D



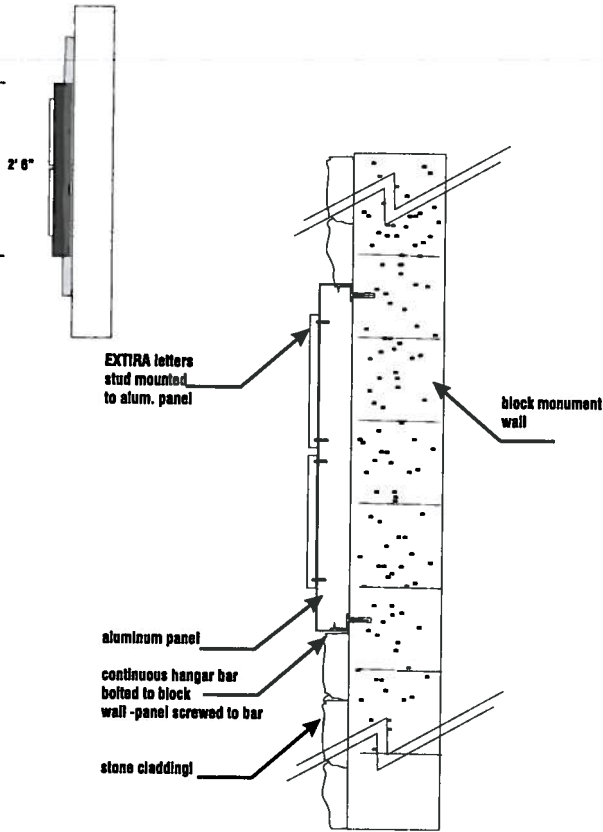
**LEMOINE RANCH
MONUMENT LIGHTING**

SCALE - 1/2" = 1' 0"



3" deep panel - .125 aluminum - exposed 1" beyond stone cladding
 Paint panel Duromodic Bronze. Mount on monument wall on
 continuous hanger bars

.75" deep EXTRA letters
 Paint Matthews acrylic polyurethane - MP05700 Pearl Stone
 mount on panel with SS studs and silicone adhesive.



JERRY WYMAN
 975 hillcroft circle
 oakland, ca 94610
 (510) 893-5840
 fax (510) 893-5841
 jerry@jerrywyman.com
 jwgo consulting

Project:
 Lemoine Ranch
 Monument Entry

Project # 1835

Address:
 4456 Foothill Rd.
 Pleasanton, CA

5-28-10

Revisions:

Scale:
 AS NOTED

Sheet No.:
 1 of 1

This is an original unapproved drawing created by Jerry Wyman Sign Consulting (JWSC). It is submitted for your approval. It is not to be shown to anyone outside of your organization, nor is it to be reproduced, copied or included in any format. The changing of colors, sizes, materials or dimensions without direct contact with the designer. Accuracy of this design is held by JWSC. Alterations to any design is any format must be returned to writing from JWSC.

