

Color Scheme - Yolanda Court

October 13, 2010

RECEIVED

OCT 15 2010

CITY OF PLEASANTON
PLANNING DIVISION

PDR-933

EXHIBIT B

Roofing
Monier Lifetile
Charcoal Brown Blend
1FACS1132



Body 1
Kelly Moore
171 Sand Pebble



Accent
Kelly Moore
160 Bravado



Body 2
Kelly Moore
4007-3 Mexican Hill



Trim
Kelly Moore
4200-5 Cranberry Craze

Stone Accent
Eldorado Stone
Veneto Field Ledge



Note: All colors and textures are representative samples only, pending verification of actual material suppliers and manufacturers for this particular project.

SDG ARCHITECTURE + ENGINEERING

3361 WALNUT BLVD. SUITE 120 BRENTWOOD, CA 94513
925.634.7000 WWW.SDGENGINEERING.COM



RECEIVED

OCT 13 2010
CITY OF PLEASANTON
PLANNING DIVISION

PDR-933



Y o l a n d a C o u r t

Pleasanton, CA
September 10, 2010

SDG Architecture + Engineering

3381 Walnut Blvd. Suite 120 Brentwood, CA 94513
925.634.7000
www.strausdesign.com



CONCEPTUAL PLANT LIST

TREES:	SIZE	BOTANICAL NAME	COMMON NAME
(Tree symbol)	24" BOX	APPROVED STREET TREE	
(Tree symbol)	15 GAL	ARBITUS 'MARINA'	STRAWBERRY MADRONE
(Tree symbol)	24" BOX	CERCIS OCCIDENTALIS	EASTERN REDBUD
(Tree symbol)	15 GAL	LAGERSTROEMIA INDICA	CRAPPE MYRTLE
(Tree symbol)	15 GAL	PRUNUS C. 'KRAUTER VESUVIUS'	PURPLE LEAF FLUM
(Tree symbol)	24" BOX	QUERCUS AGRIFOLIA	LIVE OAK
(Tree symbol)	15 GAL	TILIA CORDATA	LITTLE LEAF LINDEN
LARGE SCALE SHRUBS:			
(Shrub symbol)	5 GAL	ARBITUS UNEDO 'COMPACTA'	COMPACT STRAWBERRY TREE
(Shrub symbol)	5 GAL	LAGERSTROEMIA INDICA	SHRUB CRAPPE MYRTLE
(Shrub symbol)	5 GAL	NANDINA DOMESTICA	HEAVENLY BAMBOO
(Shrub symbol)	5 GAL	PLUMBAGO CAPENSIS	CAPE PLUMBAGO
(Shrub symbol)	5 GAL	VIBURNUM TINUS 'VARIEGATA'	VARIEGATED VIBURNUM
MEDIUM TO SMALL SCALE SHRUBS:			
(Shrub symbol)	5 GAL	CAMELLIA SASANQUA 'TANYA'	SUN CAMELLIA
(Shrub symbol)	5 GAL	ESCALLONIA COMPACTA'	DIWARF ESCALLONIA
(Shrub symbol)	5 GAL	LOROPETALUM 'PLUM DELIGHT'	PURPLE FRINGE FLOWER
(Shrub symbol)	5 GAL	PUNICA G. 'NANA'	DIWARF POMEGRANATE
ACCENT PLANTS:			
(Plant symbol)	1 GAL	AGAPANTHUS 'STORM CLOUD'	DEEP BLUE LILY-OF-THE-NILE
(Plant symbol)	1 GAL	HEMEROCALLIS HYB.	DAYLILY
(Plant symbol)	1 GAL	HEUCHERA	CORAL BELLS
(Plant symbol)	1 GAL	LAVANDULA	LAVENDER
(Plant symbol)	5 GAL	PHORMIUM TENAX	DIWARF VARIETIES
(Plant symbol)	1 GAL	SALVIA GREGGII	FLOWERING SAGE
(Plant symbol)	1 GAL	STIPA ARUNDINACEA	NEW ZEALAND WIND GRASS
GROUNDCOVERS:			
(Groundcover symbol)	1 GAL	ARCTOSTAPHYLOS UVA-URSII	MANZANITA
(Groundcover symbol)	1 GAL	CEANOTHUS G. 'ANCHOR BAY'	WILD LILAC
(Groundcover symbol)	1 GAL	HELICOTRICHON SEMPERVIRENS	BLUE OAT GRASS
(Groundcover symbol)	1 GAL	HYPERICUM CALYCLINUM	ST. JOHNS WORT
(Groundcover symbol)	1 GAL	TRACHELOSPERMUM JASMINOIDES	STAR JASMINE

NOTE:
THIS IS AN ORIGINAL UNREGISTERED DRAWING.
THIS DRAWING IS NOT TO BE REPRODUCED,
COPIED, PHOTOGRAPHED OR OTHERWISE,
WITHOUT THE WRITTEN CONSENT
OF BORRECCO/KILIAN & ASSOCIATES, INC.

BORRECCO/KILIAN & ASSOCIATES, INC.
LANDSCAPE ARCHITECTS
1241 Pine Street
Marina, California 94033
Phone: 925/772-5506
FAX: 925/772-5508



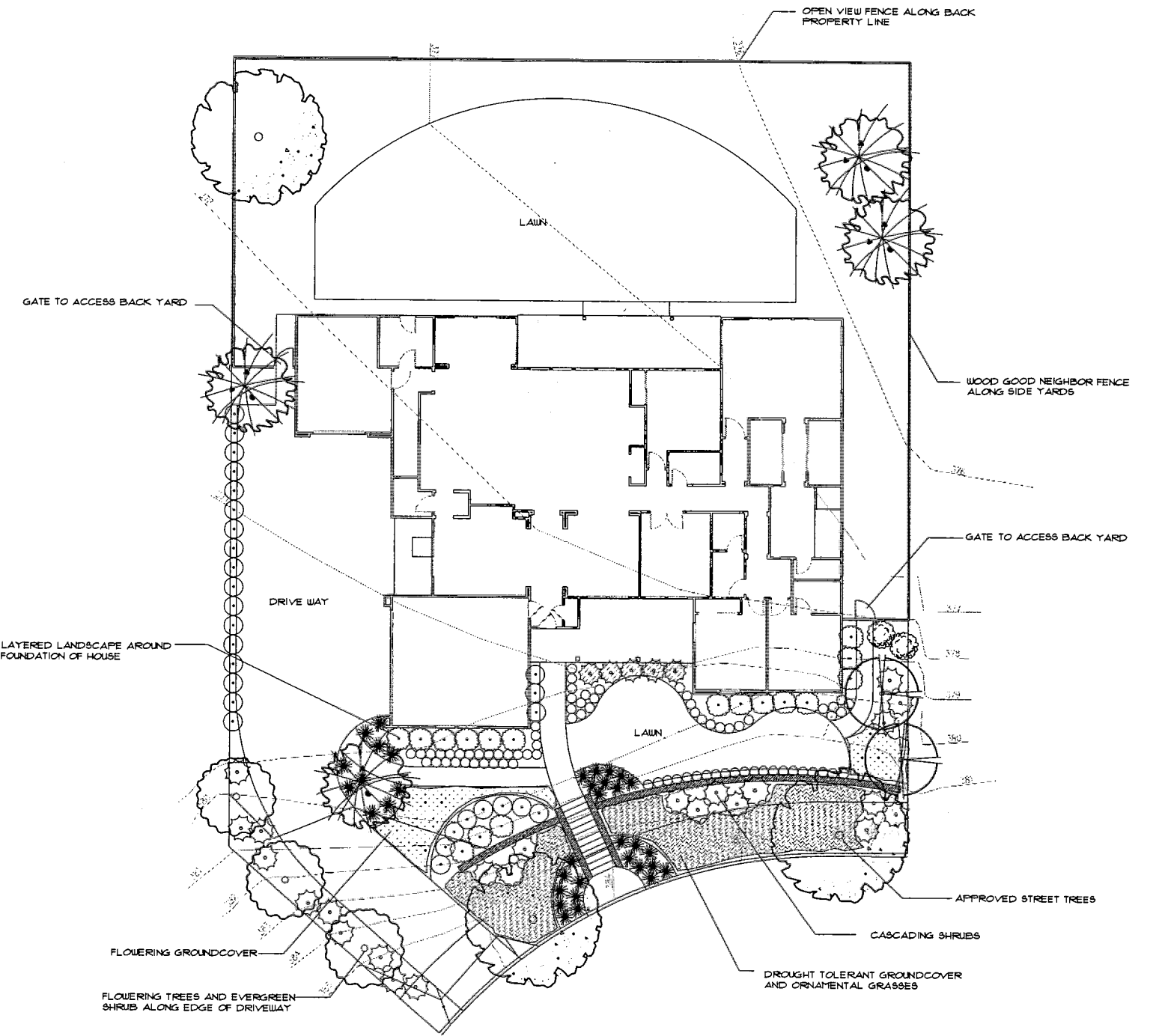
REV.	DESCRIPTION	DATE

LOT 4 TRACT 7499
PLEASANTON, CA

DATE: 10/27/10
SCALE: 1/8" = 1'-0"
SHEET NUMBER: L-1

TITLE OF DRAWING: PRELIMINARY

DISCLAIMER: ALL VELLUM, BOND, TRACE, BLUEPRINT, ETC. DRAWINGS PROVIDED WITH BORRECCO/KILIAN & ASSOCIATES, INC. (BK&A) LANDSCAPE ARCHITECTS, TITLE BLOCK AND/OR SIGNATURE STAMP, IS CONSIDERED TO BE A COPY OF THE ORIGINAL DESIGN RETAINED BY BK&A IN ELECTRONIC FORMAT. BK&A WILL ONLY ACKNOWLEDGE SIGNED AND STAMPED PLANS AND DRAWINGS AFTER COMPARISON AND WRITTEN VERIFICATION WITH THE ORIGINAL ELECTRONIC FILES RETAINED BY BK&A NO RESPONSIBILITY OR LIABILITY IS EXPRESSED OR IMPLIED FOR ELECTRONIC DATA AND/OR REPRODUCED PLANS AND DRAWINGS USED WITHOUT BK&A'S SIGNATURE.



YOLANDA COURT

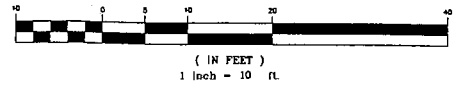
CONCEPTUAL LANDSCAPE PLAN

GENERAL LANDSCAPE NOTES

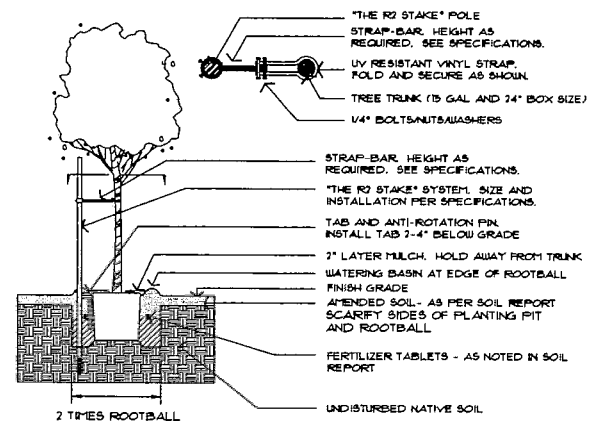
ALL LANDSCAPE AREA SHALL BE WATERED WITH A BURIED, AUTOMATICALLY CONTROLLED IRRIGATION SYSTEM. LOW VOLUME, MPR NOZZLES AND DRIP WILL BE USED WHERE APPROPRIATE FOR WATER CONSERVATION.
ALL LANDSCAPE AREAS SHALL BE COVERED WITH A 2" LAYER OF BARK MULCH TOP DRESSING.
ALL TREES SHALL BE INSTALLED AT A MINIMUM OF 15 GAL. SIZE. ALL SHRUBS SHALL BE INSTALLED AT A 5 GAL. SIZE, EXCEPT ACCENT AND GROUND COVER SHRUBS.



GRAPHIC SCALE



LANDSCAPE AND IRRIGATION PLANS SHALL COMPLY WITH THE CRITERIA OF THE WATER EFFICIENT LANDSCAPING ORDINANCE AND SHALL APPLY SUCH CRITERIA FOR THE EFFICIENT USE OF WATER IN THE LANDSCAPE AND IRRIGATION PLANS.



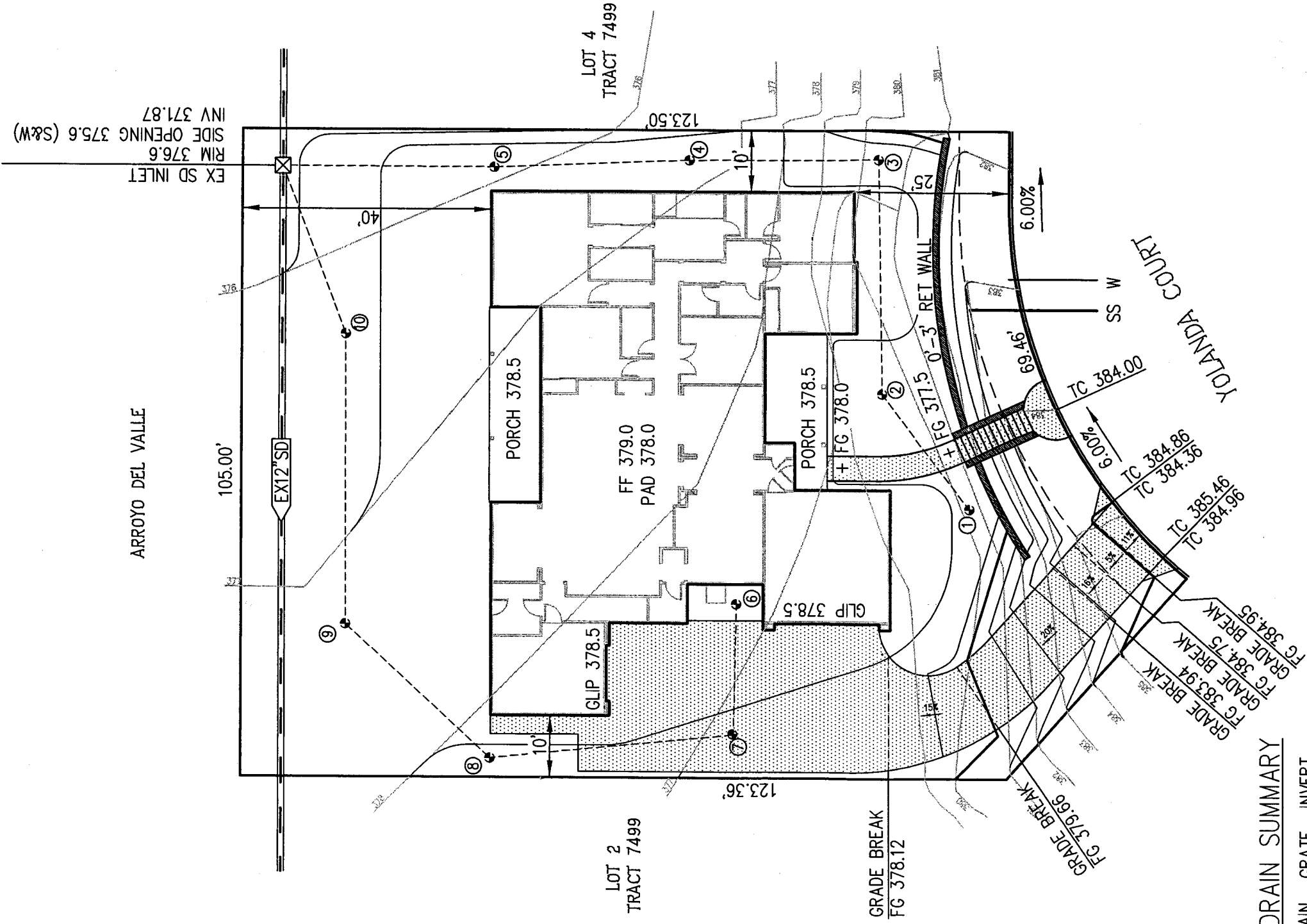
NOTES:
TREE STAKE TO BE LOCATED ON PREVAILING WIND SIDE WHEN TREE IS IN LEAF.
INSTALL TREE'S ROOTBALL 3" ABOVE FINISH GRADE (ROOT PLANE SHALL BE EXPOSED AT GRADE)
CONTACT J. R. PARTNERS • (888) 333-3292 FOR TREE STAKES

TREE PLANTING AND STAKING DETAIL

U:\Wilson_Lyn\l\plan\10-01-01_146_borsec-2004.dwg Oct. 12, 2010 11:07am Administrator



SCALE: 1"=20'



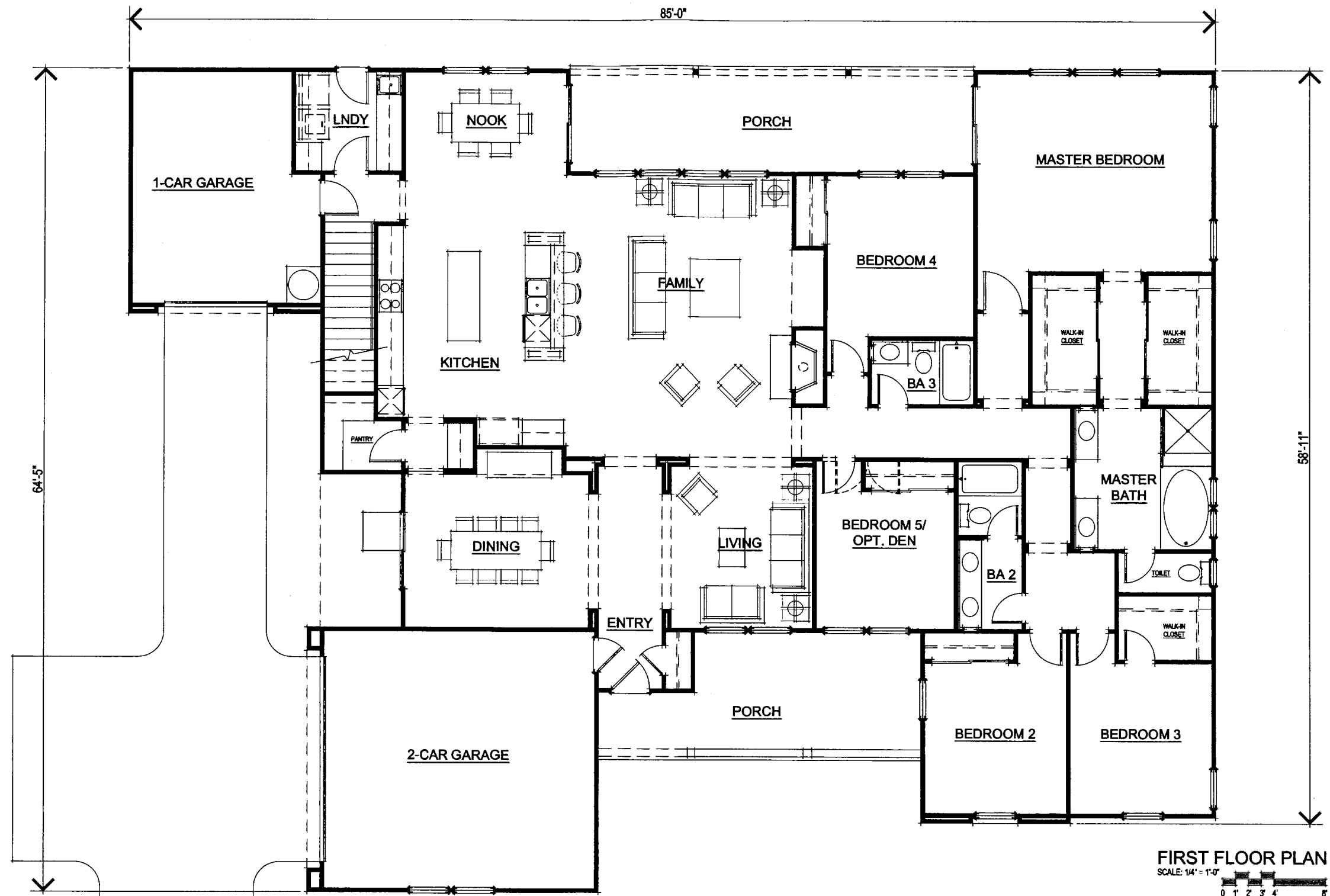
AREA DRAIN SUMMARY

AREA DRAIN	GRATE	INVERT
1	377.5	376.5
2	377.5	376.2
3	377.7	375.8
4	378.1	375.5
5	378.1	375.2
6	378.2	376.8
7	377.8	376.5
8	378.1	376.1
9	377.3	375.8
10	376.7	375.3

NOTES

1. MINIMUM PIPE SLOPE SHALL BE 1.0%
2. FINE GRADING BETWEEN INLETS SHALL PROVIDE 2% MINIMUM SWALES AND 5% POSITIVE DRAINAGE AWAY FROM STRUCTURES, COMPLIANT WITH 2007 CALIFORNIA BUILDING CODE SECTION 1803.3

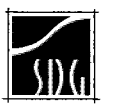
GRADING AND DRAINAGE PLAN
LOT 4 - TRACT 7499
PLEASANTON, CA

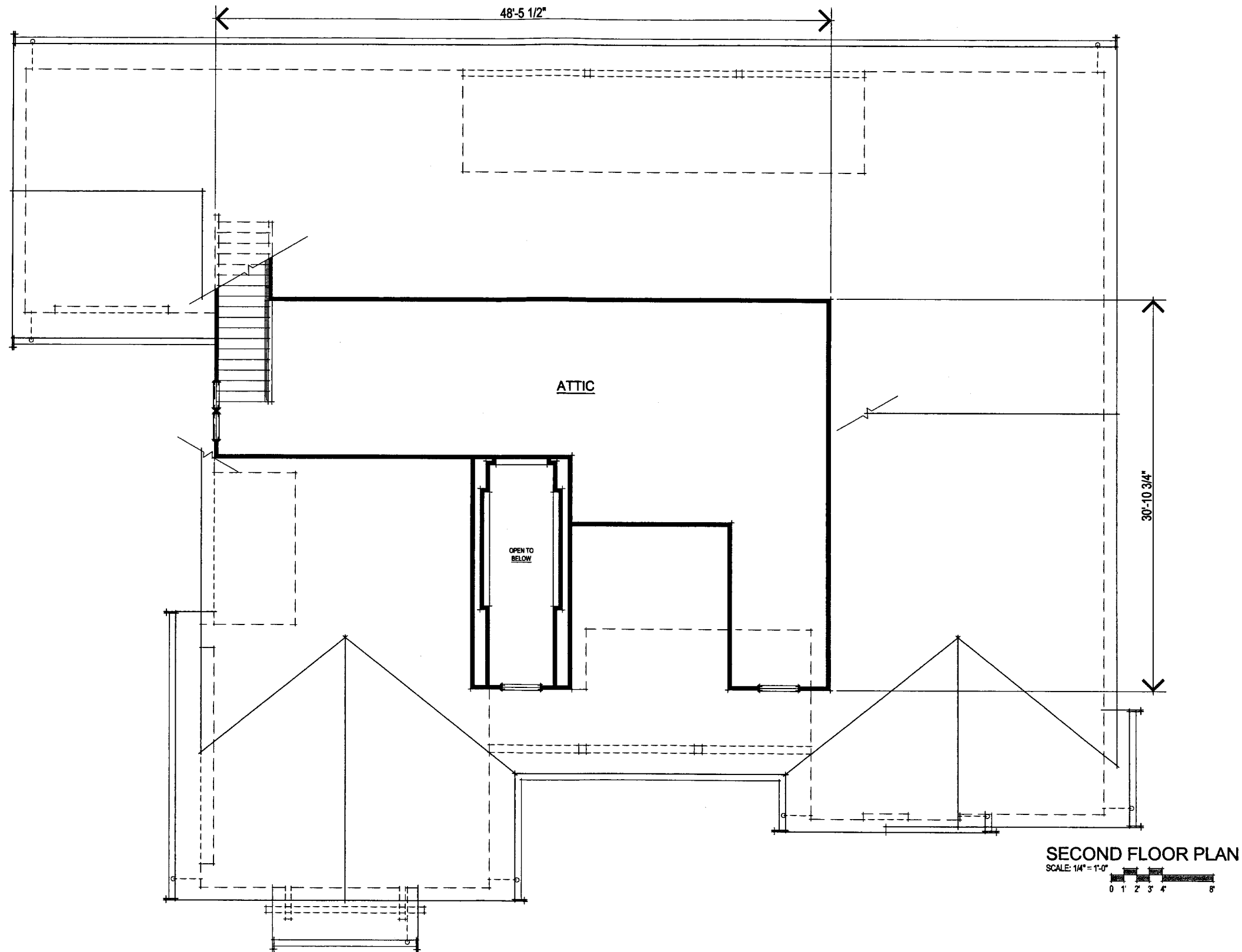


FIRST FLOOR PLAN

SCALE: 1/4" = 1'-0"

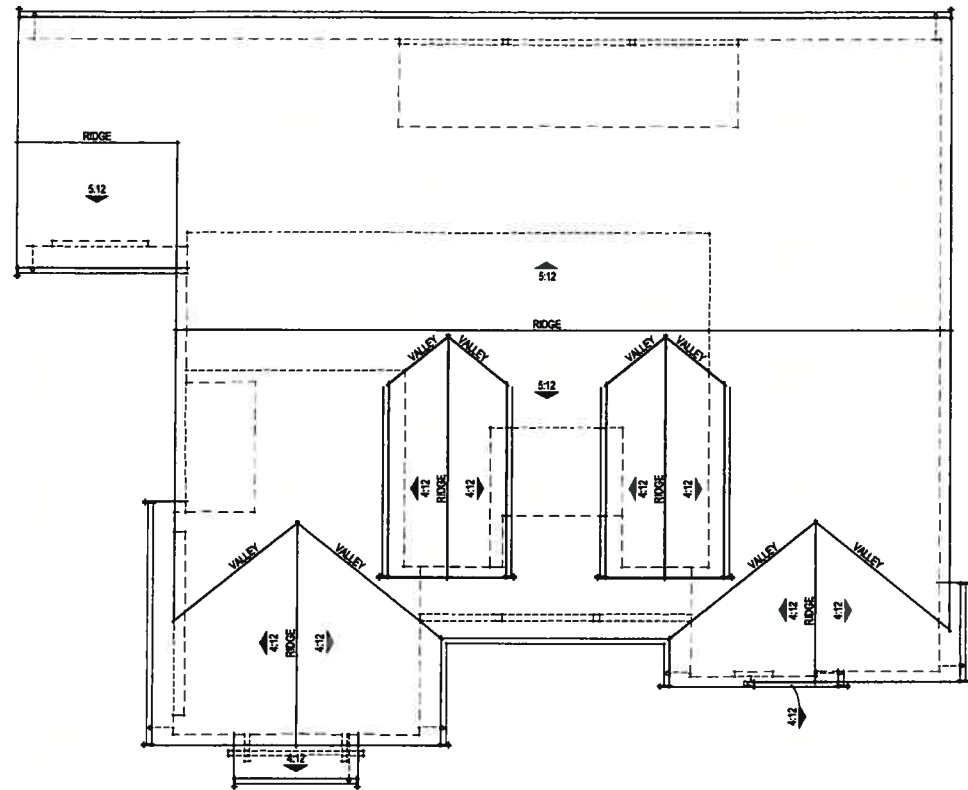
SQUARE FOOTAGE	
FIRST FLOOR:	3140 SQ. FT.
ATTIC	794 SQ. FT.
2-CAR GARAGE:	442 SQ. FT.
1-CAR GARAGE:	261 SQ. FT.





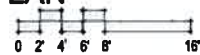
SECOND FLOOR PLAN
 SCALE: 1/4" = 1'-0"
 0 1' 2' 3' 4' 8'



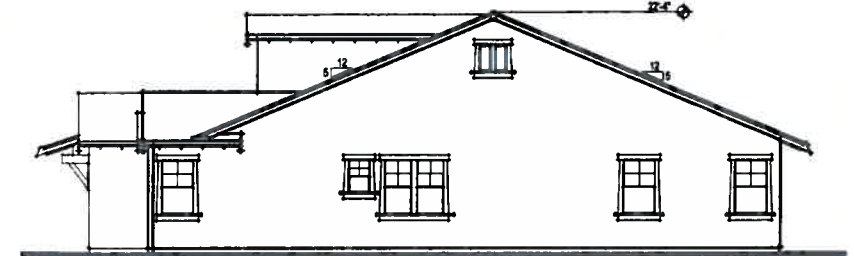


ROOF PLAN

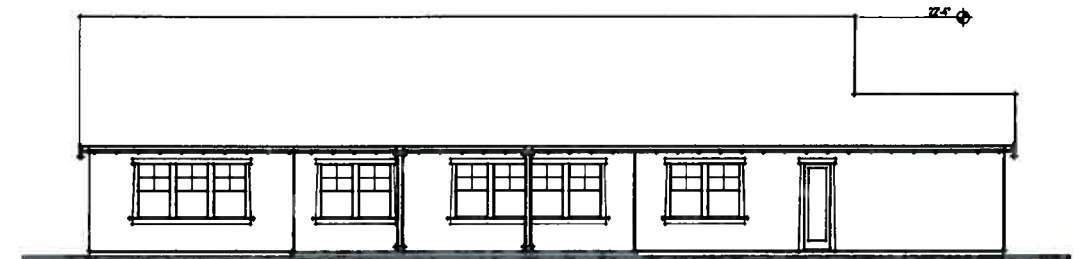
SCALE: 1/8" = 1'-0"



LEFT ELEVATION

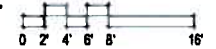


RIGHT ELEVATION



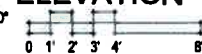
REAR ELEVATION

SCALE: 1/8" = 1'-0"



FRONT ELEVATION

SCALE: 1/4" = 1'-0"



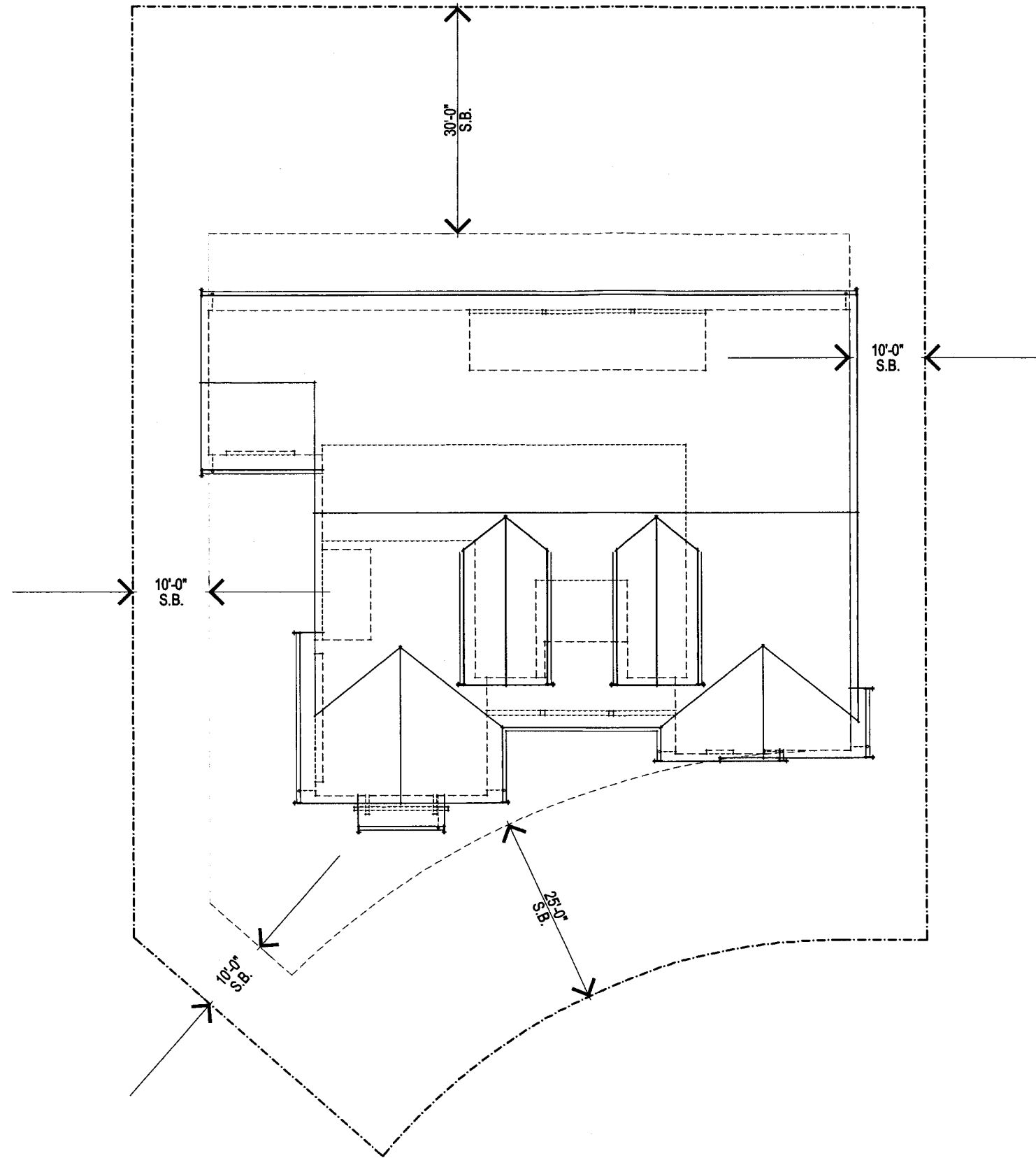
Y o l a n d a C o u r t

Pleasanton, CA
September 10, 2010

SDG Architecture + Engineering

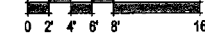
3361 Walnut Blvd. Suite 120 Brentwood, CA 94513
925.634.7000
www.strausdesign.com





SITE PLAN

SCALE: 1/8" = 1'-0"



Y o l a n d a C o u r t

Pleasanton, CA
September 10, 2010

SDG Architecture + Engineering

3361 Walnut Blvd. Suite 120 Brentwood, CA 94513

925.634.7000

www.strausdesign.com



GreenPoint Rated Checklist: Single Family

The GreenPoint Rated checklist tracks green features incorporated into the home. **A home is only GreenPoint Rated if all features are verified by a Certified GreenPoint Rater through Build It Green.** GreenPoint Rated is provided as a public service by Build It Green, a professional non-profit whose mission is to promote healthy, energy and resource efficient buildings in California.

The minimum requirements of GreenPoint Rated are: verification of 50 or more points; Earn the following minimum points per category: Energy (30), Indoor Air Quality/Health (5), Resources (6), and Water (9); and meet the prerequisites A.2.a, H10a, J.2, N.1, and Q0.

This checklist accommodates the verification of mandatory CALGreen measures but does not signify compliance unless accepted by enforcing agency. All CALGreen measures within the checklist must be selected as "Yes" or "N/A" for compliance with GreenPoint Rated. Build It Green is not a code enforcement agency.

The criteria for the green building practices listed below are described in the GreenPoint Rated Single Family Rating Manual. For more information please visit www.builditgreen.org/greenpointrated

Single Family New Home 4.2 / 2008 Title 24

RECEIVED
JUL 15 2010
CITY OF PLEASANTON
PLANNING DIVISION
PDR-933

GreenPoint RATED

Total Points Targeted: **60**

Enter Project Name		Points Achieved	Community	Energy	IAQ/Health	Resources	Water	Notes
A. SITE		Possible Points						
1. Protect Topsoil and Minimize Disruption of Existing Plants & Trees								
No	a. Protect Topsoil and Reuse after Construction	0	1				1	
No	b. Limit and Delineate Construction Footprint for Maximum Protection	0					1	
2. Divert/Recycle Job Site Construction Waste (Including Green Waste and Existing Structures)								
Yes	a. Required: Divert 50% (by weight) of All Construction and Demolition Waste (Recycling or Reuse) (CALGreen Code)	Y				R		
No	b. Divert 100% of Asphalt and Concrete and 65% (by weight) of Remaining Materials	0				2		
No	c. Divert 100% of Asphalt and Concrete and 90% (by weight) of Remaining Materials	0				2		
3. Use Recycled Content Aggregate (Minimum 25%)								
No	a. Walkway and Driveway Base	0				1		
No	b. Roadway Base	0				1		
4. Cool Site: Reduce Heat Island Effect On Site		0	1					
5. Construction Environmental Quality Management Plan, Duct Sealing, and Pre-Occupancy Flush-Out [*This credit is a requirement associated with J4: EPA IAP]								
Yes	a. Duct openings and other related air distribution component openings shall be covered during construction. (CALGreen code if applicable)	1			1			
No	b. Full environmental quality management plan and pre-occupancy flush out is conducted (Prerequisite is A5a)	0			1			
Total Points Available in Site = 12		1						
B. FOUNDATION		Possible Points						
=20%	1. Replace Portland Cement in Concrete with Recycled Fly Ash and/or Slag (Minimum 20%)	1				2		
No	2. Use Frost-Protected Shallow Foundation in Cold Areas (CEC Climate Zone 16)	0				2		
No	3. Use Radon Resistant Construction [*This credit is a requirement associated with J4: EPA IAP]	0			2			
No	4. Install a Foundation Drainage System [*This credit is a requirement associated with J4: EPA IAP]	0				2		
No	5. Moisture Controlled Crawlspace [*This credit is a requirement associated with J4: EPA IAP]	0			2			
6. Design and Build Structural Pest Controls								
No	a. Install Termite Shields & Separate All Exterior Wood-to-Concrete Connections	0				1		
No	b. All Plants Have Trunk, Base, or Stem Located At Least 36 Inches from Foundation	0				1		
Total Points Available in Foundation = 12		1						
C. LANDSCAPE		Possible Points						
50%	<i>Enter in the % of landscape area. (Projects with less than 15% of the total site area (i.e. total lot size) as landscape area are capped at 6 points for the following measures: C1 through C7 and C9 through C11.</i>							
No	1. Group Plants by Water Needs (Hydrozoning)	0					2	
No	2. Mulch All Planting Beds to the Greater of 3 Inches or Local Water Ordinance Requirement	0					2	
3. Construct Resource-Efficient Landscapes								
Yes	a. No Invasive Species Listed by Cal-IPC Are Planted	1					1	
No	b. No Plant Species Will Require Shearing	0				1		
No	c. 75% of Plants Are Drought Tolerant, California Natives or Mediterranean Species or Other Appropriate Species	0					3	
4. Minimize Turf in Landscape Installed by Builder								
No	a. Turf Shall Not Be Installed on Slopes Exceeding 10% and No Overhead Sprinklers Installed in Areas Less Than 8 Feet Wide	0					2	
No	b. Turf Is Small Percentage of Landscaped Area (2 Points for =25%, 4 Points for =10%)	0					4	
No	5. Plant Shade Trees	0	1	1			1	
6. Install High-Efficiency Irrigation Systems								
Yes	a. System Uses Only Low-Flow Drip, Bubblers, or Sprinklers	2					2	
N/A	b. System Has Smart (Weather-Based) Controller (CALGreen code if applicable)	N/A					3	
No	7. Incorporate Two Inches of Compost in the Top 6 to 12 Inches of Soil	0					3	
8. Rain Water Harvesting System								
No	a. Cistern(s) is Less Than 750 Gallons	0					1	
No	b. Cistern(s) is 750 to 2,500 Gallons	0					1	
No	c. Cistern(s) is Greater Than 2,500 Gallons	0					1	
No	9. Irrigation System Uses Recycled Wastewater	0					1	
No	10. Submetering for Landscape Irrigation	0					1	

Enter Project Name

Enter Project Name		Points Achieved	Community	Energy	IAQ/Health	Resources	Water	Notes
11. Design Landscape to Meet Water Budget								
No	a. Install Irrigation System That Will Be Operated at =70% Reference ET (Prerequisites for Credit are C1. and C2.)	0					1	
No	b. Install Irrigation System That Will Be Operated at =50% Reference ET (Prerequisites for Credit are C1, C2, and C6a or C6b.)	0					1	
12. Use Environmentally Preferable Materials for 70% of Non-Plant Landscape Elements and Fencing								
No	A) FSC-Certified Wood, B) Reclaimed, C) Rapidly Renewable, D) Recycled-Content E) Finger-Jointed or F) Local	0				1		
13. Reduce Light Pollution by Shielding Fixtures and Directing Light Downward								
No		0	1					
Total Points Available in Landscape = 35		3						
D. STRUCTURAL FRAME & BUILDING ENVELOPE		Possible Points						
1. Apply Optimal Value Engineering								
No	a. Place Joists, Rafters and Studs at 24-Inch On Center	0				3		
No	b. Door and Window Headers are Sized for Load	0				1		
No	c. Use Only Cripple Studs Required for Load	0				1		
2. Construction Material Efficiencies								
No	a. Wall and Floor Assemblies (Excluding Solid Wall Assemblies) are Delivered Panelized from Supplier (Minimum of 80% Square Feet)	0				2		
No	b. Modular Components Are Delivered Assembled to the Project (Minimum 25%)	0				6		
3. Use Engineered Lumber								
Yes	a. Engineered Beams and Headers	1				1		
Yes	b. Wood I-Joists or Web Trusses for Floors	1				1		
No	c. Engineered Lumber for Roof Rafters	0				1		
No	d. Engineered or Finger-Jointed Studs for Vertical Applications	0				1		
Yes	e. Oriented Strand Board for Subfloor	1				1		
No	f. Oriented Strand Board for Wall and Roof Sheathing	0				1		
No		0		1				
4. Insulated Headers								
No	a. Dimensional Lumber, Studs and Timber (Minimum 40%)	0				6		
No	b. Panel Products (Minimum 40%)	0				3		
6. Use Solid Wall Systems (Includes SIPS, ICFs, & Any Non-Stick Frame Assembly)								
No	a. Floors	0				2		
No	b. Walls	0				2		
No	c. Roofs	0				1		
7. Energy Heels on Roof Trusses (75% of Attic Insulation Height at Outside Edge of Exterior Wall)								
Yes		1		1				
8. Install Overhangs and Gutters								
No	a. Minimum 18-Inch Overhangs and Gutters	0				1		
No	b. Minimum 24-Inch Overhangs and Gutters	0		1				
9. Reduce Pollution Entering the Home from the Garage (This credit is a requirement associated with J4: EPA IAP)								
No	a. Install Garage Exhaust Fan OR Build a Detached Garage	0			1			
No	b. Tightly Seal the Air Barrier between Garage and Living Area (Performance Test Required)	0			1			
Total Points Available in Structural Frame and Building Envelope = 39		4						
E. EXTERIOR		Possible Points						
1. Use Environmentally Preferable Decking								
No		0				2		
2. Flashing Installation Techniques Specified and Third-Party Verified (This credit is a requirement associated with J4: EPA IAP)								
No		0				1		
3. Install a Rain Screen Wall System								
No		0				2		
4. Use Durable and Non-Combustible Siding Materials								
Yes		1				1		
5. Use Durable and Fire Resistant Roofing Materials or Assembly								
Yes		2				2		
Total Points Available in Exterior = 8		3						
F. INSULATION		Possible Points						
1. Install Insulation with 75% Recycled Content								
No	a. Walls	0				1		
No	b. Ceilings	0				1		
No	c. Floors	0				1		
Total Points Available in Insulation = 3		0						
G. PLUMBING		Possible Points						
1. Distribute Domestic Hot Water Efficiently (Max. 5 points, G1a. is a Prerequisite for G1b-e)								
a. Insulate All Hot Water Pipes (This credit is a requirement associated with J4: EPA IAP)								
No		0		1			1	
b. Use Engineered Parallel Plumbing								
No		0					1	
c. Use Engineered Parallel Plumbing with Demand Controlled Circulation Loop(s)								
No		0					1	
d. Use Traditional Trunk, Branch and Twig Plumbing with Demand Controlled Circulation Loop(s)								
No		0		1			2	
e. Use Central Core Plumbing								
No		0		1		1	1	
2. Water Efficient Fixtures								
Yes	a. High Efficiency Showerheads = 2.0 Gallons Per Minute (gpm) at 80 psi. (Multiple showerheads shall not exceed maximum flow rates) (CALGreen code if applicable)	3					3	
Yes	b. High Efficiency Bathroom Faucets = 1.5 gpm at 60psi (CALGreen code)	1					1	
Yes	c. High Efficiency Kitchen and Utility Faucets = 1.8 gpm (CALGreen code if applicable)	1					1	
3. Install Only High Efficiency Toilets (Dual-Flush or =1.28 Gallons Per Flush (gpf)) (CALGreen code if applicable)								
N/A		N/A					2	
Total Points Available in Plumbing = 12		5						
H. HEATING, VENTILATION & AIR CONDITIONING		Possible Points						
1. Properly Design HVAC System and Perform Diagnostic Testing								
a. Design and Install HVAC System to ACCA Manual J, D, and S Recommendations (CALGreen code if applicable) (This credit is a requirement associated with J4: EPA IAP)								
N/A		N/A		4				

Enter Project Name

Enter Project Name		Points Achieved	Community	Energy	IAQ/Health	Resources	Water	Notes
No	b. Test Total Supply Air Flow Rates [*This credit is a requirement associated with J4: EPA IAP]	0		1				
No	c. Third Party Testing of Mechanical Ventilation Rates for IAQ (meet ASHRAE 62.2)	0		1				
2. Install Sealed Combustion Units [*This credit is a requirement associated with J4: EPA IAP]								
No	a. Furnaces	0			2			
No	b. Water Heaters	0			2			
No	3. Install High Performing Zoned Hydronic Radiant Heating	0		1	1			
Yes	4. Install High Efficiency Air Conditioning with Environmentally Preferable Refrigerants	t	t					
5. Design and Install Effective Ductwork								
No	a. Install HVAC Unit and Ductwork within Conditioned Space	0		t				
No	b. Use Duct Mastic on All Duct Joints and Seams [*This credit is a requirement associated with J4: EPA IAP]	0		t				
No	c. Pressure Relieve the Ductwork System [*This credit is a requirement associated with J4: EPA IAP]	0		t				
No	6. Install High Efficiency HVAC Filter (MERV 6+) [*This credit is a requirement associated with J4: EPA IAP]	0			1			
Yes	7. No Fireplace OR Install Sealed Gas Fireplace(s) with Efficiency Rating >60% using CSA Standards [*This credit is a requirement associated with J4: EPA IAP]	t			1			
N/A	8. Install ENERGY STAR Bathroom Fans on Timer or Humidistat (CALGreen code if applicable)	N/A			1			
9. Install Mechanical Ventilation System for Cooling (Max. 4 Points)								
No	a. Install ENERGY STAR Ceiling Fans & Light Kits in Living Areas & All Bedrooms	0		1				
N/A	b. Install Whole House Fan (Credit Not Available if H9c Chosen) (CALGreen code if applicable)	N/A		t				
No	c. Automatically Controlled Integrated System with Variable Speed Control	0		3				
10. Advanced Mechanical Ventilation for IAQ								
Yes	a. Required: Compliance with ASHRAE 62.2 Mechanical Ventilation Standards (as adopted in Title 24 Part 6) [*This credit is a requirement associated with J4: EPA IAP]	Y			R			
No	b. Advanced Ventilation Practices (Continuous Operation, Some Limit, Minimum Efficiency, Minimum Ventilation Rate, Homeowner Instructions)	0			t			
No	c. Outdoor Air Ducted to Bedroom and Living Areas of Home	0			2			
No	11. Install Carbon Monoxide Alarm(s) (or No Combustion Appliances in Living Space and No Attached Garage) [*This credit is a requirement associated with J4: EPA IAP]	0			1			
Total Points Available in Heating, Ventilation and Air Conditioning = 27		2						
L. RENEWABLE ENERGY								Possible Points
No	1. Pre-Plumb for Solar Water Heating	0					t	
No	2. Install Wiring Conduit for Future Photovoltaic Installation & Provide 200 ft² of South-Facing Roof	0					1	
0.0%	3. Offset Energy Consumption with Onsite Renewable Generation (Solar PV, Solar Thermal, Wind) Enter % total energy consumption offset, 1 point per 4% offset	0		25				
Total Available Points in Renewable Energy = 27		0						
J. BUILDING PERFORMANCE								Possible Points
1. Building Envelope Diagnostic Evaluations								
No	a. Verify Quality of Insulation Installation & Thermal Bypass Checklist before Drywall [*This credit is a requirement associated with J4: EPA IAP]	0		t				
No	b. House Passes Blower Door Test [*This credit is a requirement associated with J4: EPA IAP]	0		1				
No	c. Blower Door Results are Max 2.5 ACH ₅₀ for Unbalanced Systems (Supply or Exhaust) or Max 1.0 ACH ₅₀ for Balanced Systems (2 Total Points for J1b. and J1c.)	0		t				
No	d. House Passes Combustion Safety Backdraft Test	0			t			
15%	2. Required: Building Performance Exceeds Title 24 (Minimum 15%) (Enter the Percent Better Than Title 24, Points for Every 1% Better Than Title 24)	30		=30				
No	3. Design and Build Near Zero Energy Homes (Enter number of points, minimum of 2 and maximum of 6 points)	0		6				
No	4. Obtain EPA Indoor airPlus Certification (Total 42 points, not including Title 24 performance; read comment)	0			2			
No	5. Title 24 Prepared and Signed by a CABEC Certified Energy Plans Examiner (CEPE)	0		t				
6. Participation in Utility Program with Third Party Plan Review								
No	a. Energy Efficiency Program [*This credit is a requirement associated with J4: EPA IAP]	0			1			
No	b. Renewable Energy Program with Min. 30% Better Than Title 24 (High Performing Home)	0			1			
Total Available Points In Building Performance = 45+		30						
K. FINISHES								Possible Points
No	1. Design Entryways to Reduce Tracked-In Contaminants	0					1	
2. Use Low-VOC or Zero-VOC Paint (Maximum 3 Points)								
N/A	a. Low-VOC Interior Wall/Ceiling Paints (CALGreen code if applicable) (<50 Grams Per Liter (gpl) VOCs Regardless of Sheen) [*This credit is a requirement associated with J4: EPA IAP]	N/A			1			
No	b. Zero-VOC: Interior Wall/Ceiling Paints (<5 gpl VOCs Regardless of Sheen)	0			2			
N/A	3. Use Low-VOC Coatings that Meet SCAQMD Rule 1113 (CALGreen code if applicable) [*This credit is a requirement associated with J4: EPA IAP]	0			2			
Yes	4. Use Low-VOC Caulks, Construction Adhesives and Sealants that Meet SCAQMD Rule 1168 (CALGreen code if applicable)	2			2			
No	5. Use Recycled-Content Paint	0					1	
6. Use Environmentally Preferable Materials for Interior Finish								
A) FSC-Certified Wood, B) Reclaimed, C) Rapidly Renewable, D) Recycled-Content or E) Finger-Jointed F) Local								
No	a. Cabinets (50% Minimum)	0					3	

Enter Project Name

Enter Project Name		Points Achieved	Community	Energy	IAQ/Health	Resources	Water	Notes
No	b. Interior Trim (50% Minimum)	0				2		
No	c. Shelving (50% Minimum)	0				2		
No	d. Doors (50% Minimum)	0				2		
No	e. Countertops (50% Minimum)	0				2		
N/A	7. Reduce Formaldehyde in Interior Finish – Meet Current CARB Airborne Toxic Control Measure (ATCM) for Composite Wood Formaldehyde Limits by Mandatory Compliance Dates (CALGreen code if applicable) [*This credit is a requirement associated with J4: EPA IAP]	N/A			0			
	8. Reduce Formaldehyde in Interior Finish - Exceed Current CARB ATCM for Composite Wood Formaldehyde Limits Prior to Mandatory Compliance Dates							
No	a. Doors (90% Minimum)	0			1			
No	b. Cabinets & Countertops (90% Minimum)	0			2			
No	c. Interior Trim and Shelving (90% Minimum)	0			1			
No	9. After Installation of Finishes, Test of Indoor Air Shows Formaldehyde Level <27ppb	0			3			
Total Available Points in Finishes = 27		2						
L. FLOORING			Possible Points					
No	1. Use Environmentally Preferable Flooring (Minimum 15% Floor Area) A) FSC-Certified Wood, B) Reclaimed or Refinished, C) Rapidly Renewable, D) Recycled-Content, E) Exposed Concrete, F) Local. <i>Flooring Adhesives Must Meet SCAQMD Rule 1168 for VOCs.</i>	0				4		
No	2. Thermal Mass Floors (Minimum 50%)	0						
No	3. Low Emitting Flooring (Section 01350, CRI Green Label Plus, FloorScore [*This credit is a requirement associated with J4: EPA IAP]	0			3			
N/A	4. All carpet and 50% of Resilient Flooring is low emitting. (CALGreen code if applicable)	N/A						
Total Available Points in Flooring = 8		0						
M: APPLIANCES AND LIGHTING			Possible Points					
Yes	1. Install ENERGY STAR Dishwasher (Must Meet Current Specifications)	2		t			1	
	2. Install ENERGY STAR Clothes Washer							
No	a. Meets ENERGY STAR and CEE Tier 2 Requirements (Modified Energy Factor 2.0, Water Factor 8.0 or less)	0		t			2	
No	b. Meets ENERGY STAR and CEE Tier 3 Requirements (Modified Energy Factor 2.2, Water Factor 4.5 or less)	0					2	
	3. Install ENERGY STAR Refrigerator							
No	a. ENERGY STAR Qualified & < 25 Cubic Feet Capacity	0		t				
No	b. ENERGY STAR Qualified & < 20 Cubic Feet Capacity	0		t				
	4. Install Built-In Recycling Center or Composting Center							
No	a. Built-In Recycling Center	0					t	
No	b. Built-In Composting Center	0					t	
	5. Install High-Efficiency Lighting and Design Lighting System							
Yes	a. Install High-Efficiency Lighting	t		t				
No	b. Install a Lighting System to IESNA Footcandle Standards or Hire Lighting Consultant	0		t				
Total Available Points in Appliances and Lighting = 13		3						
N. OTHER			Possible Points					
Yes	1. Required: Incorporate GreenPoint Rated Checklist in Blueprints [*This credit is a requirement associated with J4: EPA IAP]	Y					R	
No	2. Pre-Construction Kick-Off Meeting with Rater and Subs	0	1					
No	3. Homebuilder's Management Staff are Certified Green Building Professionals	0	t					
	4. Develop Homeowner Education							
N/A	a. Develop Homeowner Manual of Green Features/Benefits (CALGreen code if applicable) [*This credit is a requirement associated with J4: EPA IAP]	N/A		t			t	
No	b. Conduct Educational Walkthroughs (Prerequisite is N4a) [*This credit is a requirement associated with J4: EPA IAP]	0			t			
No	5. Install a Home System Monitor OR Participate in a Time-of-Use Pricing Program	0		t				
Total Available Points in Other = 6		0						
O. COMMUNITY DESIGN & PLANNING			Possible Points					
	1. Develop Infill Sites							
No	a. Project is an Urban Infill Development	0	1				1	
No	b. Home(s)/Development is Located within 1/2 Mile of a Major Transit Stop	0	2					
No	2. Build on Designated Brownfield Site	0	3					
	3. Cluster Homes & Keep Size in Check							
No	a. Cluster Homes for Land Preservation	0	1				1	
No	b. Conserve Resources by increasing Density (10 Units per Acre or Greater)	0	2				2	
	c. Home Size Efficiency	0					5	
3750	I. Enter Average Unit Square Footage							
5	II. Enter Average Number of Bedrooms/Unit							
	4. Design for Walking & Bicycling							
	a. Site Has Pedestrian Access Within 1/2 Mile of Community Services:							
	TIER 1: Enter Number of Services Within 1/2 Mile							
	1) Day Care 2) Community Center 3) Public Park 4) Drug Store							
	5) Restaurant 6) School 7) Library 8) Farmer's Market 9) After School Programs 10) Convenience Store Where Meat & Produce are Sold							
	TIER 2: Enter Number of Services Within 1/2 Mile							
	1) Bank 2) Place of Worship 3) Laundry/Cleaners 4) Hardware							
	5) Theater/Entertainment 6) Fitness/Gym 7) Post Office							
	8) Senior Care Facility 9) Medical/Dental 10) Hair Care							
	t) Commercial Office or Major Employer 12) Full Scale Supermarket							
	i. 5 Services Listed Above (Tier 2 Services Count as 1/2 Service Value)	0	1					
	ii. 10 Services Listed Above (Tier 2 Services Count as 1/2 Service Value)	0	1					
Yes	b. Development is Connected with A Dedicated Pedestrian Pathway to Places of Recreational Interest Within 1/4 mile	t	1					

Enter Project Name

Enter Project Name		Points Achieved	Community	Energy	IAQ/Health	Resources	Water	Notes
No	c. Install Traffic Calming Strategies (Minimum of Two): - Designated Bicycle Lanes are Present on Roadways; - Ten-Foot Vehicle Travel Lanes; - Street Crossings Closest to Site are Located Less Than 300 Feet Apart; - Streets Have Rumble Strips, Bulbouts, Raised Crosswalks or Refuge Islands	0	2					
5. Design for Safety & Social Gathering								
Yes	a. All Home Front Entrances Have Views from the Inside to Outside Callers	t	t					
Yes	b. All Home Front Entrances Can be Seen from the Street and/or from Other Front Doors	t	t					
Yes	c. Orient Porches (min. 100sf) to Streets and Public Spaces	t	t					
No	d. Development Includes a Social Gathering Space	0	1					
6. Design for Diverse Households (6a. is a Prerequisite for 6b. and 6c.)								
No	a. All Homes Have At Least One Zero-Step Entrance	0	1					
No	b. All Main Floor Interior Doors & Passageways Have a Minimum 32-Inch Clear Passage Space	0	1					
Yes	c. Locate Half-Bath on the Ground Floor	0	t					
No	d. Provide Full-Function Independent Rental Unit	0	1					
Total Achievable Points in Community Design & Planning = 35		4						
P. INNOVATION			Possible Points					
A. Site								
1. Stormwater Control: Prescriptive Path (Maximum of 3 Points, Mutually Exclusive with PA2.)								
No	a. Use Permeable Paving for 25% of Driveways, Patios and Walkways	0	t					
No	b. Install Bio-Retention and Filtration Features	0	2					
No	c. Route Downspout Through Permeable Landscape	0	t					
No	d. Use Non-Leaching Roofing Materials	0	t					
No	e. Include Smart Street/Driveway Design	0	t					
No	2. Stormwater Control: Performance Path (Mutually Exclusive with PA 1): Perform Soil Percolation Test and Capture and Treat 85% of Total Annual Runoff	0	3					
C. Landscape								
No	1. Meet Local Landscape Program Requirement	0					2	
D. Structural Frame & Building Envelope								
1. Design, Build and Maintain Structural Pest and Rot Controls								
No	a. Locate All Wood (Siding, Trim, Structure) At Least 12" Above Soil	0				t		
No	b. All Wood Framing 3 Feet from the Foundation is Treated with Borates (or Use Factory-impregnated Materials) OR Walls are Not Made of Wood	0				t		
Yes	2. Use Moisture Resistant Materials in Wet Areas: Kitchen, Bathrooms, Utility Rooms, and Basements [This credit is a requirement associated with J4: EPA IAP]	2			t	t		
E. Exterior								
No	1. Vegetated Roof (Minimum 25%)	0	2	2				
G. Plumbing								
No	1. Greywater Pre-Plumbing (Includes Washing Machine at Minimum)	0					1	
No	2. Greywater System Operational (Includes Washing Machine at Minimum)	0					2	
No	3. Innovative Wastewater Technology (Constructed Wetland, Sand Filter, Aerobic System)	0					1	
No	4. Composting or Waterless Toilet	0					2	
No	5. Install Drain Water Heat-Recovery System	0		t				
No	6. Install a Hot Water Desuperheater	0		2				
H. Heating, Ventilation, and Air Conditioning								
No	1. Humidity Control Systems (Only in California Humid/Marine Climate Zones 1,3,5,8,7) (*This credit is a requirement associated with J4: EPA IAP)	0			t			
No	2. Design HVAC System to Manual T for Register Design	0		t				
K. Finishes								
No	1. Materials Meet SMART Criteria (Select the number of points, up to 5 points)	0					5	
N. Other								
No	1. Detailed Durability Plan and Third-Party Verification of Plan Implementation	0					2	
2. Educational Signage of Project's Green Features								
No	a. Promotion of Green Building Practices	0	t					
No	b. Installed Green Building Educational Signage	0	t					
3. Innovation: List innovative measures that meet green building objectives. Enter in the number of points in each category for a maximum of 4 points for the measure in the blue cells. Points achieved column will be automatically fill in based on the sum of the points in each category. Points and measures will be evaluated by Build It Green.								
No	Innovation: Enter up to 4 Points at right. Enter description here	0						
No	Innovation: Enter up to 4 Points at right. Enter description here	0						
No	Innovation: Enter up to 4 Points at right. Enter description here	0						
No	Innovation: Enter up to 4 Points at right. Enter description here	0						
No	Innovation: Enter up to 4 Points at right. Enter description here	0						
Total Achievable Points in Innovation = 33+		2						
Q. CALIFORNIA CALGreen CODE			Possible Points					
Yes	Home meets all applicable CAL Green measures listed in above Sections A - P of the GreenPoint Rated checklist. <i>The following measures are mandatory in the CALGreen code and do not earn points in the GreenPoint Rated Checklist, but have been included in the Checklist for the convenience of jurisdictions.</i> <i>The GreenPoint Rater is not a code enforcement official. The measures in this section may be verified by the GreenPoint Rater at their own discretion and/or discretion of the building official.</i>	Y	R					
N/A	1. CALGreen 4.106.2 Storm water management during construction.	N/A						
N/A	2. CALGreen 4.106.3 Design for surface water drainage away from buildings.	N/A						
N/A	3. CALGreen 4.303.1 As an alternative to prescriptive compliance, a 20% reduction in baseline water use shall be demonstrated through calculation.	N/A						
N/A	4. CALGreen 4.406.1 Joints and openings. Annular spaces around pipes, electric cables, conduits, or other openings in plates at exterior walls shall be protected.	N/A						
N/A	5. CALGreen 4.503.1 Gas fireplace shall be a direct-vent sealed-combustion type. Woodstove or pellet stove shall comply with US EPA Phase II emission limits.	N/A						
N/A	6. CALGreen 4.505.2 Vapor retarder and capillary break is installed at slab on grade foundations.	N/A						
N/A	7. CALGreen 4.505.3 19% moisture content of building framing materials.	N/A						

Enter Project Name		Points Achieved	Community	Energy	IAQ/Health	Resources	Water	Notes
N/A	8. CALGreen 702.1 HVAC system installers are trained and certified in the proper installation of HVAC systems.	N/A						
Total Achievable Points in California Green Code = 0		0						
Summary								
Total Available Points in Specific Categories			35	96+	44	110	56	
Minimum Points Required in Specific Categories		50	0	30	5	6	9	
Total Points Achieved		60	5	33	5	8	9	

Project has met all recommended minimum requirements

- Total Project Score of 60 Exceeds 50 Points
- Required minimums
 - All 50% water savings required
 - HVAC Compliant with ASHRAE 90.2 Mechanical Ventilation Minimums
 - U2, U3, U4 & U5
 - All Incorporated GreenCheck Pro-1 Checklist into blueprints
- Minimum points in specific categories:
 - Energy (10 points)
 - IAQ/Health (5 points)
 - Resources (8 points)
 - Water (9 points)