

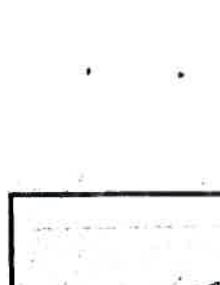
RECEIVED

DEC 02 2011

CITY OF PLEASANTON  
PLANNING DIVISION

P11-0141 (wp)

EXHIBIT B



LOCATION MAP  
 VALLEY BUSINESS PARK  
 PLEASANTON, CA

**SITE LEGEND (CIVIL)**

- EXIST. TOP OF CURB MARK
- NEW TOP OF CURB MARK
- NEW TOP OF FINISHED GRADE (CONCRETE)
- NEW TOP OF FINISHED GRADE (GENERAL)
- 2'-0" R.O.C. WITHIN DUTY C.I. WALLS
- CHERRY V-LINE (8'-11/2" - 10'-0" AREA ONLY)

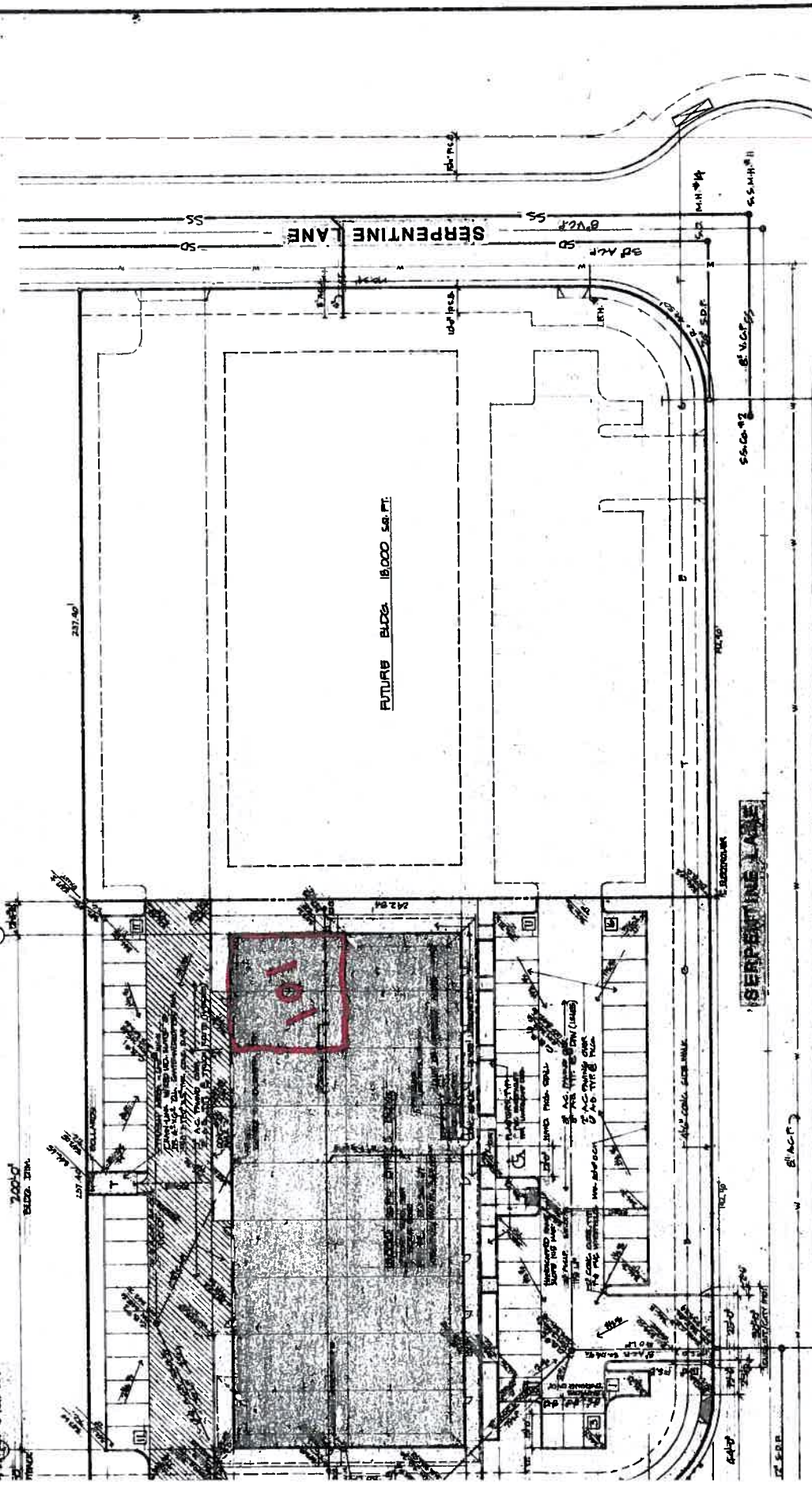
**PARKING PROVIDED:**

PAVED AREA	1,200
LANDSCAPE AREAS	1,200
TYPE OF CONSTRUCTION	CONCRETE
OCCUPANCY	OFFICE
FIRE ZONE	1
FIRE SPRINKLER SYSTEM	NO
ULSC REFERENCE	

**PROJECT ANALYSIS**

LAND AREA	5,000 SQ. FT.
BUILDING AREA	15,000 SQ. FT.
BUILDING COVERAGE	30%
PARKING REQUIRED	30
OFFICE SPACE	15,000
RENTAL	15,000

PROPERTY LINE  
 NEAREST LANE



**SITE PLAN** 1" = 20'-0"

GRADING and DRAINAGE

<p>GENNIS KOBZA &amp; ASSOCIATES, INC.          ARCHITECT          840 OLD HOLLANDS WAY          PLEASANTON, CA 94566          (925) 781-1111</p>	<p>REVISION 4</p>
	<p>REVISION 3</p>
	<p>REVISION 2</p>

OFFICE BUILDING  
 15,000 SQ. FT.  
 FOR PLEASANTON  
 PARKING ASSOCIATION

SHEET TITLE: **SITE PLAN** 1" = 20'-0"

SHEET NO. **A1**

DATE: 8/18/88  
 DRAWN BY: JML  
 CHECKED BY: JML



TRI-VALLEY  
Repertory  
Theatre

---

1048 Serpentine Lane, Suite 307 • Pleasanton, California, 94566 • (925) 462-2121 • [www.trivalleyrep.com](http://www.trivalleyrep.com)

---

Tri-Valley Repertory Theatre, formerly known as Pleasanton Playhouse, began as a non-profit theatre company in 1984. Since then we have produced almost 150 plays and musicals along with our Broadway Chorus, a one-hundred member adult chorus and thirty member children's chorus which performs at the Amador Theater, and three children's theatre camps offered in the summer months and one between Christmas and New Year's Day.

Once we move we will be downsizing to performing four musicals instead of seven per year and will no longer maintain the black box theatre. We will rehearse our Mainstage Musicals, Broadway Chorus, and Kids Camps shows in the new space. The normal rehearsals take place Sunday through Thursday evenings between 7-10:30pm and Saturdays from 10am-5pm. When we rehearse our kid's camps in late June to early August and during Christmas break we rehearse from 9am to 3pm, Monday through Friday.

There may be an occasion when we teach a dance class to prepare for auditions. These classes would occur between 5-7pm. We have only done this on average three weeks per year. We hope to have the opportunity to start doing a small musical and play at least once a year at the new Firehouse Theatre if a time slot comes open to us.

We have two volunteer office staff who work in the office on Wednesdays and Fridays from 11am-3pm and a contracted general manager who holds Production Meetings and works out of the office one to two days per week.

We have been in our current location for the past twenty-two years and are saddened that the economy has contributed to us losing our current space. We appreciate the opportunity of staying in Pleasanton and thriving for many years to come.

Tri-Valley Repertory Theatre Board of Directors