


CDI Circa Domini International, Inc.

Programming - Planning - Architecture - Interiors - Engineering

17852 17th St, Suite 111, Tustin, CA 92780 ♦ Phone/Fax. (888) 505-0052

November 7, 2012

City of Pleasanton
Planning Division
200 Old Bernal Ave.
Pleasanton, CA 94566-0802

RE: Written Narrative for the Application for Conditional Use Permit of Leslie's Pool Supply located at 4001 Santa Rita Road. APN# 946-1100-037

To Whom It May Concern:

We are submitting written narrative as part of the application to obtain Conditional Use Permit for our referenced retail store. Leslie's will be occupying existing 4,167 SF retail space of existing 14,726 SF building and wishes to make tenant improvement of the space to fit Leslie's operational needs.

Leslie's Pool Supply is a retail outlet that sells pre-packaged pool chemicals as well as pool pumps, parts, pool toys and pool accessories. Leslie's is not in the business of selling bulk pool chemicals.

Leslie's typical hours of operation are Mondays through Saturday 9AM to 6PM and on Sunday from 10AM to 5PM.

Typically, Leslie's employs two employees per shift, up to maximum of four employees.

On average, there are about 1 to 10 customers at any one time, and thus, maximum of 10 parking utilization by the Leslie's customers.

The building is V-B construction type, M occupancy, and the premise has sprinklers.

The scope of work includes (1) Installing walls for an office, (2) Enlarging supply entrance from a single door to double door and (3) Lighting fixture changes.

We request your timely review and approval of our plans. Please let us know should you need anything else.

Sincerely,

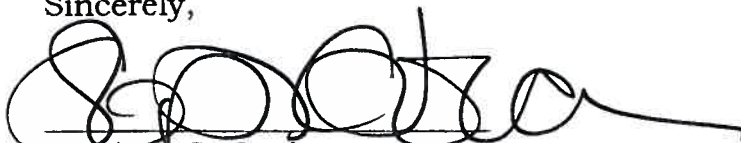
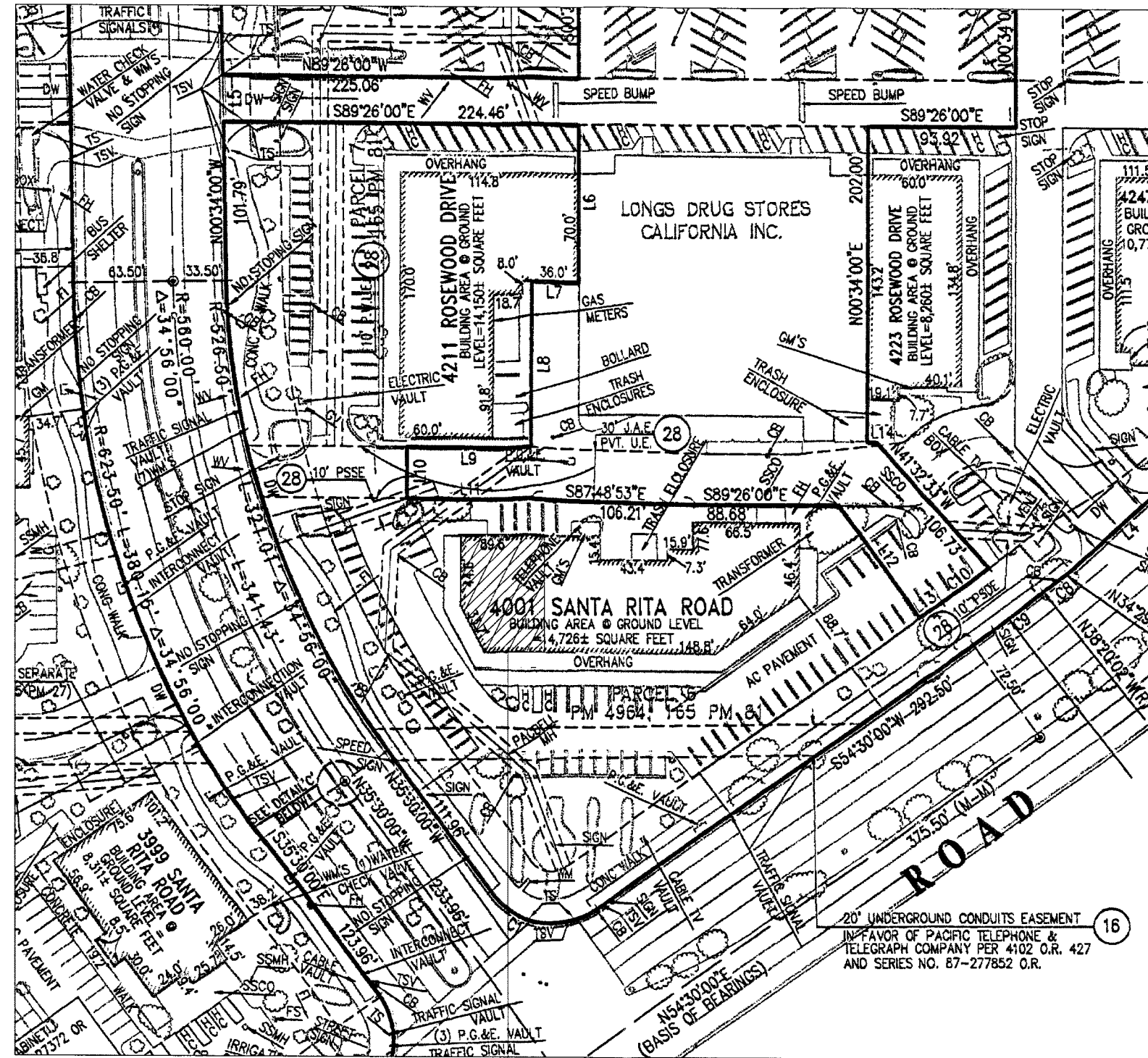

Stephen C. Jordan

EXHIBIT "B"
RECEIVED

NOV 09, 2012

212-1774

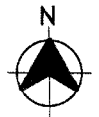


TANGENT TABLE		CURVE TABLE	
NO	BEARING LENGTH	NO	RADIUS LENGTH
L1	N00°34'00"W 58.18'	C1	48.50' 90°00'00" 77.75'
L2	N00°34'00"W 84.00'	C2	21.50' 38°24'00" 14.78'
L3	N00°34'00"W 96.76'	C3	22.50' 39°24'00" 15.47'
L4	S47°59'10"W 67.46'	C4	120.01' 56°30'26" 118.36'
L5	N00°34'00"W 30.00'	C5	289.00' 151°22'31" 74.84'
L6	S00°34'00"W 101.00'	C6	282.00' 09°17'54" 45.33'
L7	N89°26'00"W 30.00'	C7	1133.62' 04°22'30" 79.97'
L8	S00°34'00"W 106.00'	C8	282.00' 03°50'18" 18.88'
L9	N89°26'00"W 79.88'	C9	1133.62' 02°50'02" 56.07'
L10	S00°34'00"W 33.00'	C10	1100.12' 01°55'26" 36.93'
L11	S89°26'00"E 79.87'		
L12	S33°53'00"E 67.20'		
L13	N54°30'00"E 17.22'		
L14	N89°26'00"W 5.80'		
L15	N89°26'00"W 16.10'		
L16	S00°34'00"W 4.31'		

APN: 946-1100-037

PROPOSED 4,167SF LESLIE'S POOL SUPPLY

SITE PLAN
1" = 40'

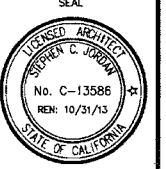


CDI Circa Domini International, INC.
Programming - Planning - Architecture - Interiors - Engineering
17852 East 17th Street, Suite 111, Tustin, CA 92780
Telephone / Fax: (888) 505-0052



SITE PLAN
LESLIE'S POOL SUPPLY
STORE # 827
4001 SANTA RITA RD.
PLEASANTON, CA

REVISION



DATE: 11-06-12
JOB NO: 626.210
SCALE: AS SHOWN
DRAWN BY:
STORE # 827
DRAWING NO.

C1

