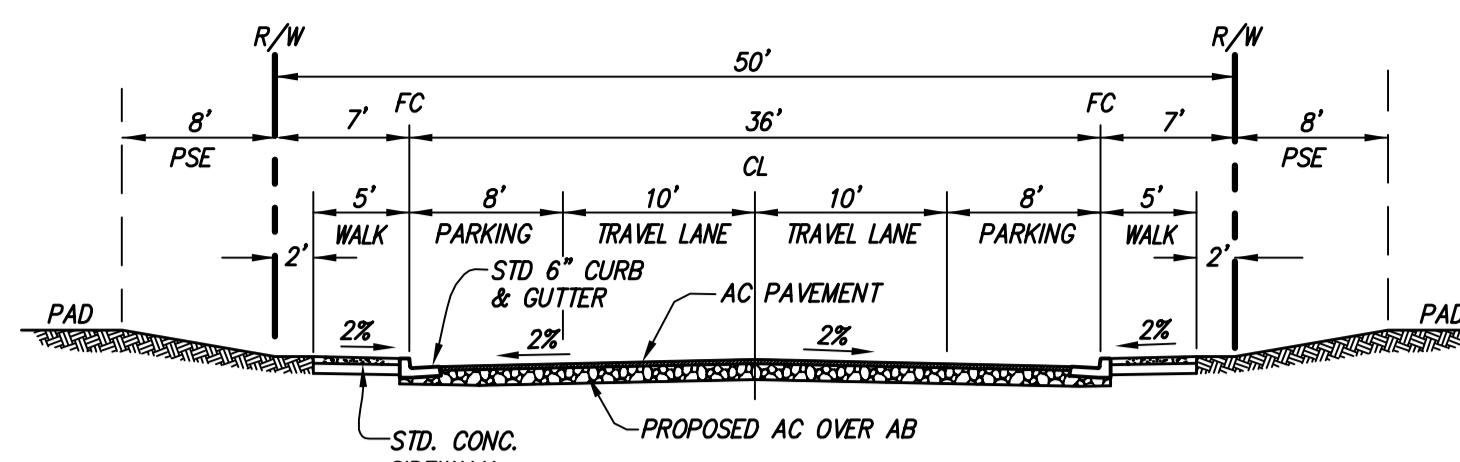


**LAND USE SUMMARY**

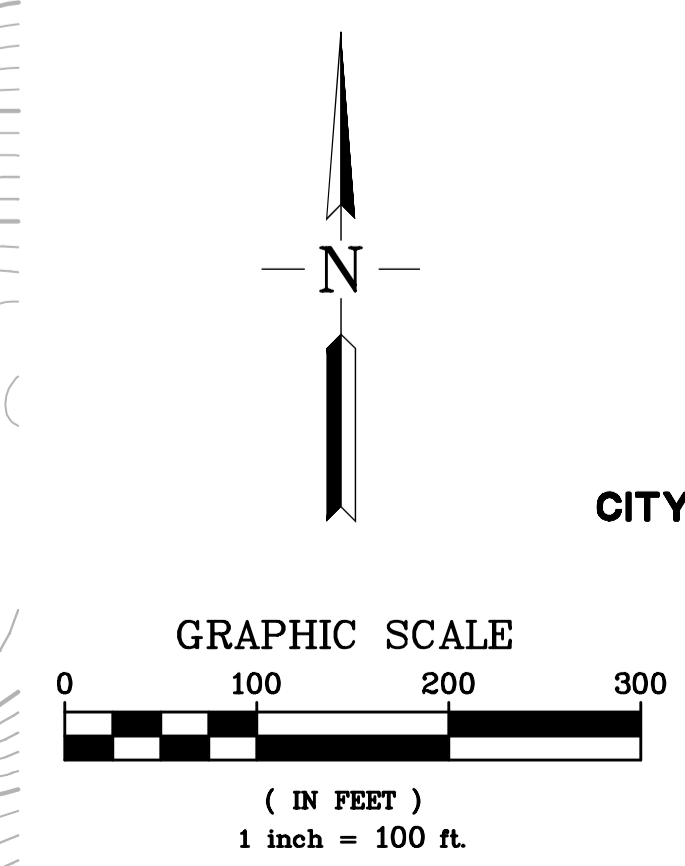
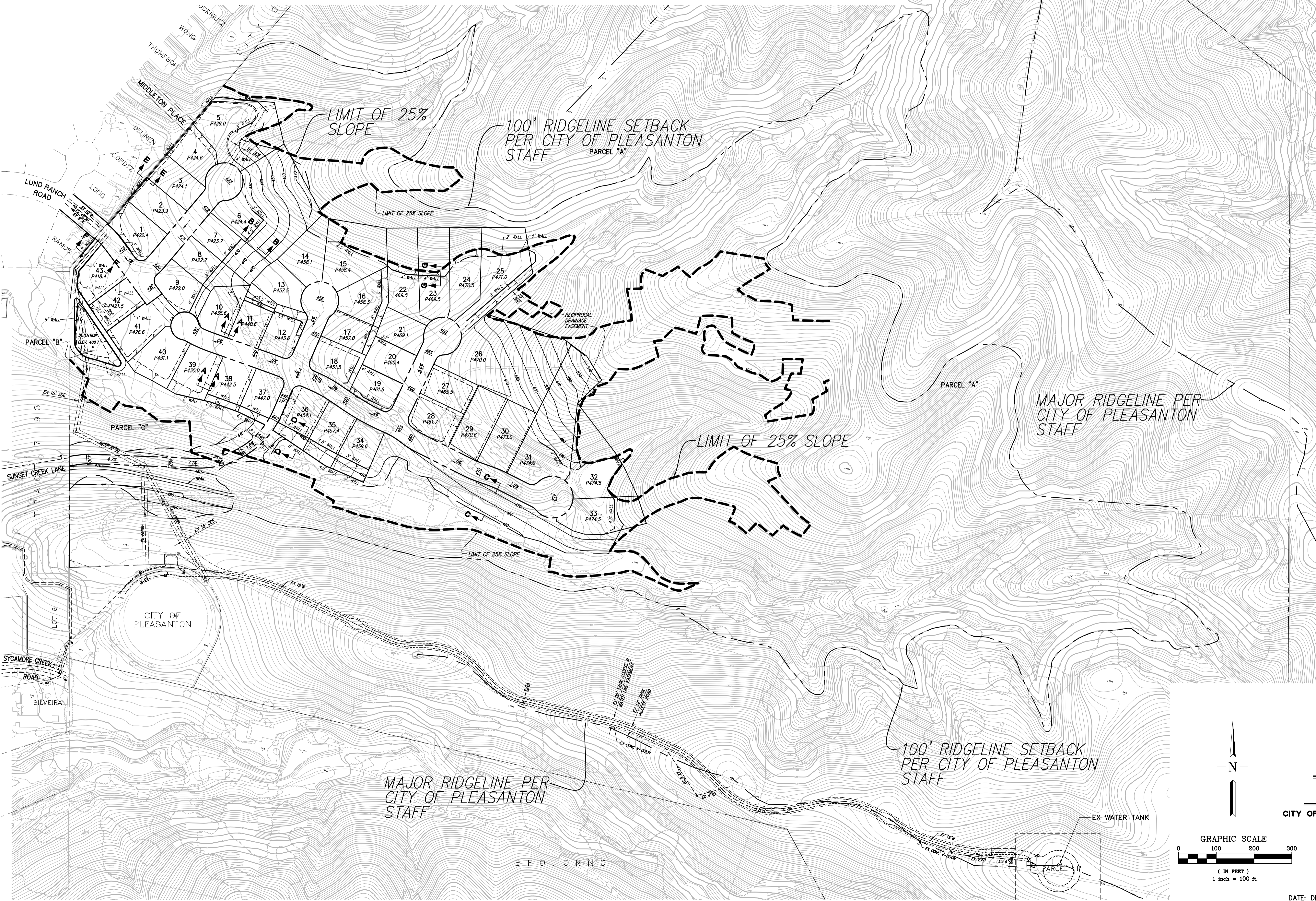
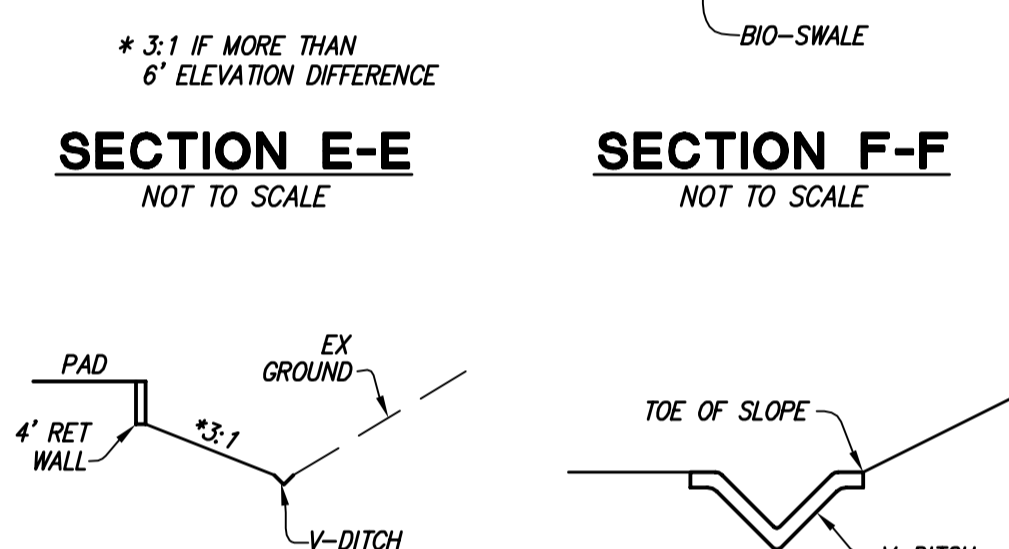
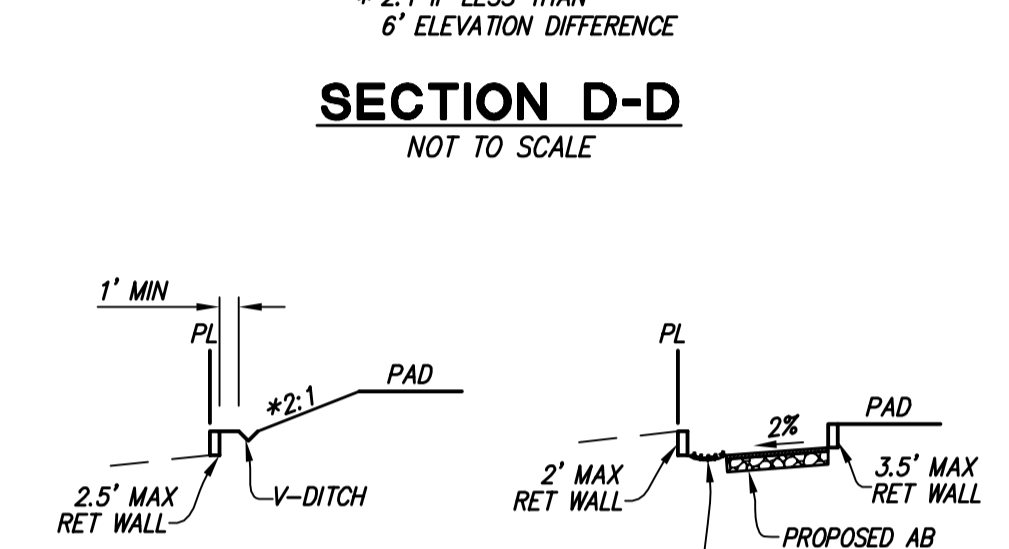
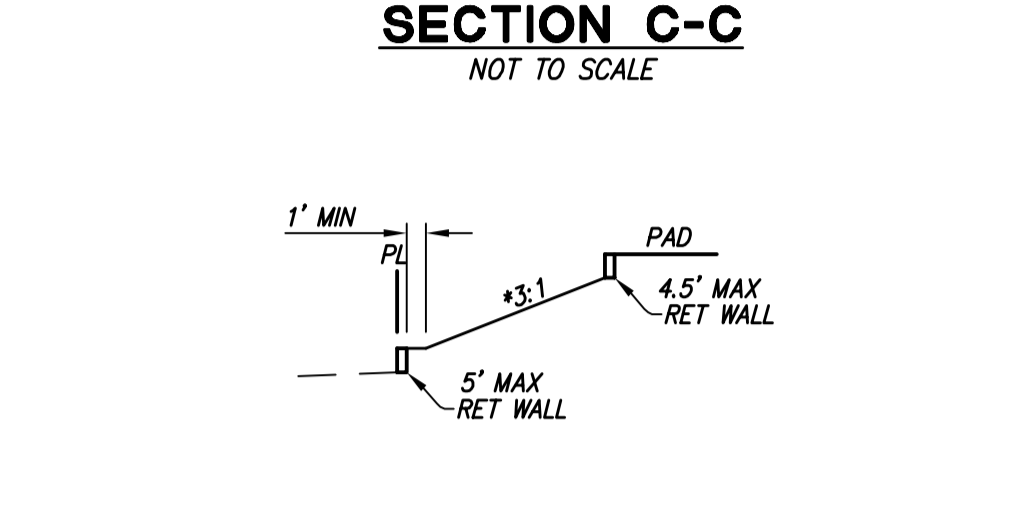
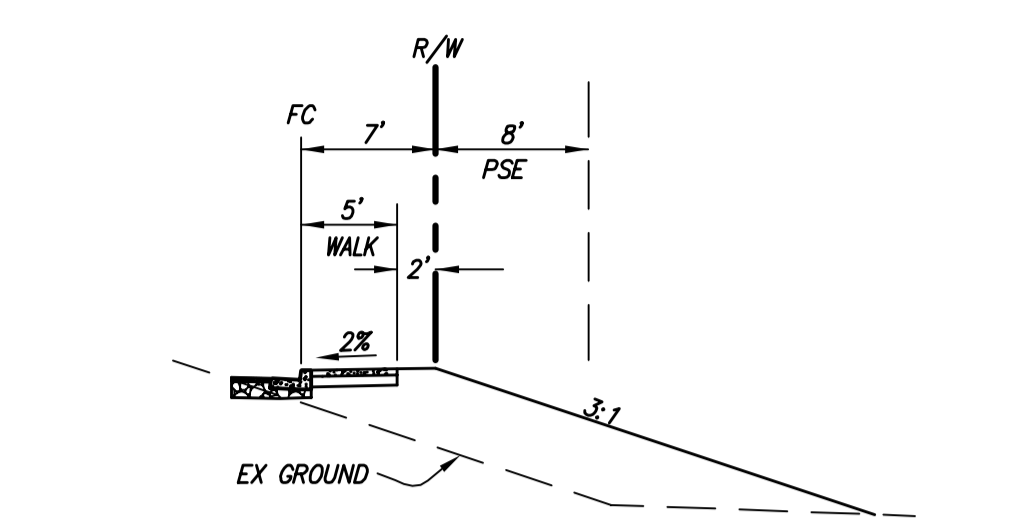
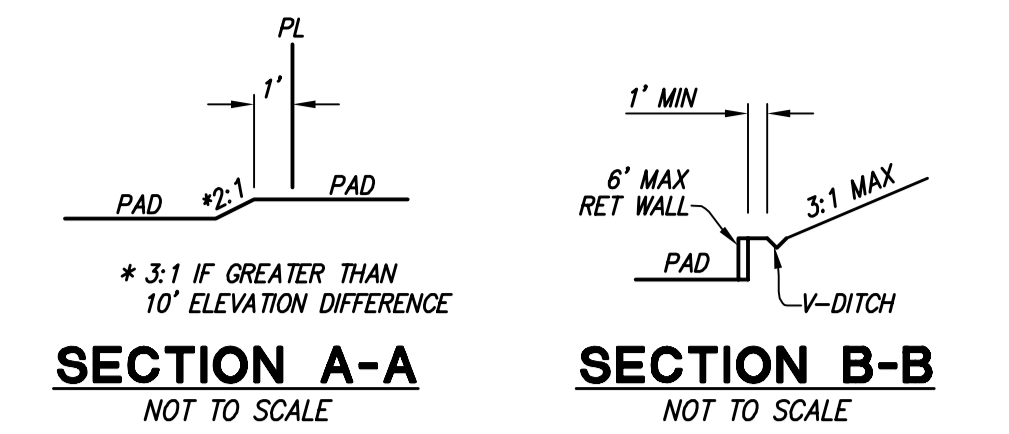
LAND USE	UNITS	ACRES	% OF SITE
SINGLE FAMILY DETACHED 10,000 S.F. MIN. LOT SIZE	43	16.6	8.5%
STREETS	-	3.3	1.7%
PARCEL "B"	-	0.5	0.3%
PUBLIC OPEN SPACE (PARCELS "A" & "C")	-	174.3	89.5%
	43	194.8	100%

**SITE SUMMARY**

NUMBER OF UNITS:	43
SITE ACRES:	194.8 ACRES
DEVELOPED AREA:	21.4 ACRES
TOTAL LOTS AND STREETS:	19.9 ACRES
GROSS DENSITY:	0.22 DU/AC
SMALLEST LOT SIZE:	10,000 SF
LARGEST LOT SIZE:**	48,472 SF
AVERAGE LOT SIZE:**	16,816 SF



**TYPICAL STREET SECTION**  
LUND RANCH ROAD; COURT "A"; COURT "B"; COURT "C"  
(PUBLIC)  
NOT TO SCALE



**PRELIMINARY  
GRADING PLAN  
LUND RANCH II**  
CITY OF PLEASANTON, ALAMEDA COUNTY, CALIFORNIA

**RJA**  
**RUGGERI-JENSEN-AZAR**  
ENGINEERS • PLANNERS • SURVEYORS  
4690 CHABOT DRIVE, SUITE 200 PLEASANTON, CA 94588  
PHONE: (925) 227-9100 FAX: (925) 227-9300

5/15/2015 10:14:14 AM EXHIBIT SITE PLAN DEC 2015 (194.8 AC) GRAD SITE 2015-12-16.DWG 1/4"=100' 2:16:08 PM MARK