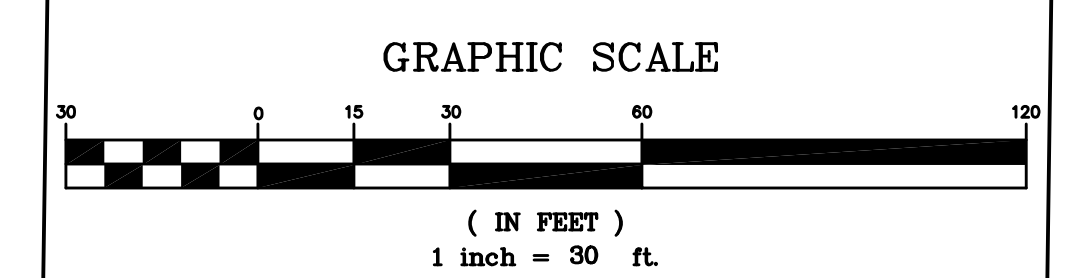
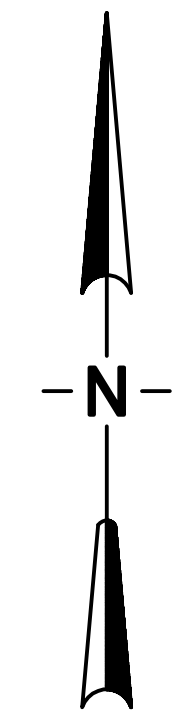
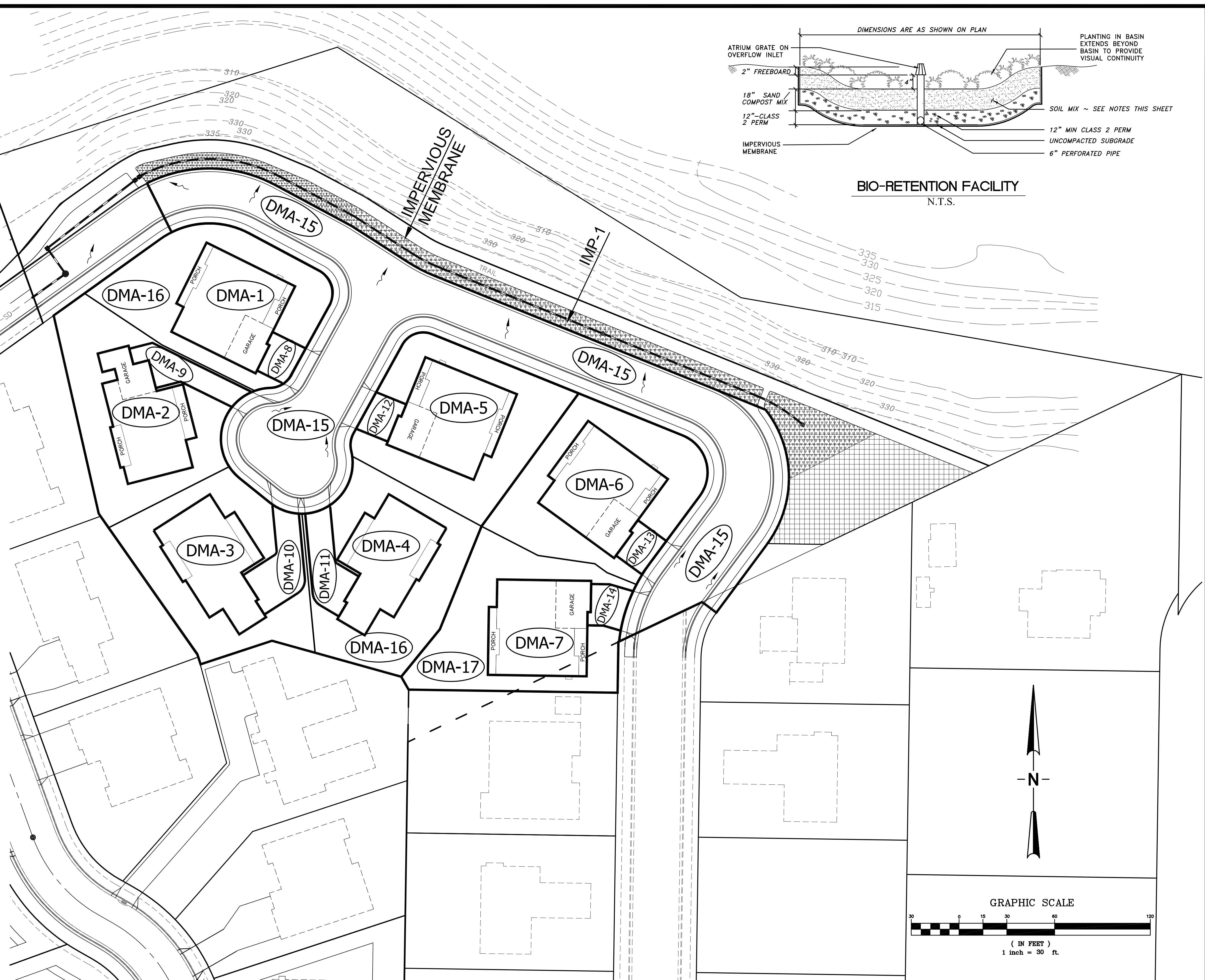


BIO-RETENTION FACILITY
N.T.S.

DMA	AREA	SURFACE
DMA-1	3,670 SF±	ROOF
DMA-2	3,285 SF±	ROOF
DMA-3	3,285 SF±	ROOF
DMA-4	3,285 SF±	ROOF
DMA-5	3,670 SF±	ROOF
DMA-6	3,670 SF±	ROOF
DMA-7	3,670 SF±	ROOF
DMA-8	555 SF±	CONCRETE
DMA-9	1,125 SF±	CONCRETE
DMA-10	1,380 SF±	CONCRETE
DMA-11	1,210 SF±	CONCRETE
DMA-12	535 SF±	CONCRETE
DMA-13	540 SF±	CONCRETE
DMA-14	605 SF±	CONCRETE
DMA-15	29,470 SF±	ASPHALT
DMA-16	27,890 SF±	LANDSCAPING
DMA-17	11,520 SF±	LANDSCAPING

IMP	SIZE
1	11,205 SF±

- LEGEND**
- BIO-SWALE / PLANTERS
 - IMPERVIOUS MEMBRANE
 - CATCH BASINS
 - STORM DRAIN LINE
 - DENOTES AREA (DMA) DRAINAGE MANAGEMENT AREA
 - INTEGRATED MANAGEMENT PRACTICE



STORM WATER CONTROL PLAN

ROSELYN ESTATES PHASE II PROJECT
P.U.D. #94 ~ TRACT 0000
CITY OF PLEASANTON, ALAMEDA COUNTY, CALIFORNIA

#	REVISIONS	DATE
△	REV. LOT 1	12/13/2012
△	REV. LOTS 1-7	1/3/2013
△	PER MEETING WITH CITY	3/27/2013

DeBolt Civil Engineering
811 San Ramon Valley Boulevard
Danville, California 94526
Tel: 925/837-3780
Fax: 925/837-4378

Date: 9/10/2012
Scale: 1" = 30'
By: JED / adv
Job No.: 06136