



# ARBORIST REPORT

---

California Center  
Pleasanton, CA

*Prepared for:*  
**Pleasant Partners, LLC**  
**C/O Sares Regis**  
**901 Mariners Island Blvd., Suite 700**  
**San Mateo, CA 94404**

*Prepared by:*  
**HortScience, Inc.**  
**325 Ray Street**  
**Pleasanton, CA 94566**

**October 2012**



**Arborist Report  
California Center  
Pleasanton CA**

**Table of Contents**

---

	<b>Page</b>
Introduction and Overview	1
Survey Methods	1
Description of Trees	2
Suitability for Preservation	4
Evaluation of Impacts and Recommendations for Preservation	5
Tree Preservation Guidelines	6

**List of Tables**

---

Table 1. Condition ratings and frequency of occurrence for trees	3
Table 2. Tree suitability for preservation	5

**Attachments**

---

***Table 3: Trees Recommended for Removal***

***Tables 4 and 5: Appraisal of Value***

***Tree Assessment Form***

***Tree Assessment Map***

## ***Introduction and Overview***

Pleasant Partners LLC is proposing the redevelopment of the California Center site in Pleasanton California. The proposed project would construct a mixed use, residential development on 8.4 acres of existing surface parking and landscaping at the south end of the site. Outside the 8.4 acres, a small amount of existing surface parking would be reconfigured, two currently landscaped areas would be converted to surface parking, and a structured parking garage will be constructed. HortScience, Inc. was asked to prepare an **Arborist Report** for the site for review by the City of Pleasanton.

This report provides the following information:

1. A survey of trees within the proposed project area.
2. An assessment of the impacts of constructing the proposed project on the trees.
3. Identification of trees to be removed and preserved.
4. The appraised value of individual trees.

## ***Survey Methods***

Trees were re-assessed in January, February and August of 2012. The survey included trees 6" and greater in diameter. The survey procedure consisted of the following steps:

1. Identifying the tree as to species;
2. Tagging each tree with an identifying number and recording its location on a map;
3. Measuring the trunk diameter at a point 54" above grade;
4. Evaluating the health and structural condition using a scale of 1 – 5:
  - 5** - A healthy, vigorous tree, reasonably free of signs and symptoms of disease, with good structure and form typical of the species.
  - 4** - Tree with slight decline in vigor, small amount of twig dieback, minor structural defects that could be corrected.
  - 3** - Tree with moderate vigor, moderate twig and small branch dieback, thinning of crown, poor leaf color, moderate structural defects that might be mitigated with regular care.
  - 2** - Tree in decline, epicormic growth, extensive dieback of medium to large branches, significant structural defects that cannot be abated.
  - 1** - Tree in severe decline, dieback of scaffold branches and/or trunk; most of foliage from epicormics; extensive structural defects that cannot be abated.
5. Rating the suitability for preservation as "good", "fair" or "poor". Suitability for preservation considers the health, age and structural condition of the tree species, and its potential to remain an asset to the site for years to come.

- Good:** Trees with good health and structural stability that have the potential for longevity at the site.
- Fair:** Trees with somewhat declining health and/or structural defects than can be abated with treatment. The tree will require more intense management and monitoring, and may have shorter life span than those in 'good' category.
- Poor:** Trees in poor health or with significant structural defects that cannot be mitigated. Tree is expected to continue to decline, regardless of treatment. The species or individual may have characteristics that are undesirable for landscapes, and generally are unsuited for use areas.

### **Description of Trees**

Four hundred and fifty-seven (457) trees were re-evaluated. This represents only a portion of the total trees previously assessed on the site and therefore, the tag numbers are non-sequential. Descriptions of each tree are found in the **Tree Assessment Form**, locations are shown on the **Tree Assessment Map** (see Attachments), and a summary is provided in Table 1 (following page).

Three distinct vegetation zones were present at the site. Mature trees were concentrated on an earthen berm that separated the site from Owens Dr. to the south and Rosewood Dr. to the west. A row of semi-mature eucalyptus was located on the eastern property line, adjacent to Tassajara creek, and interior trees were young to semi-mature and planted in parking lot islands.

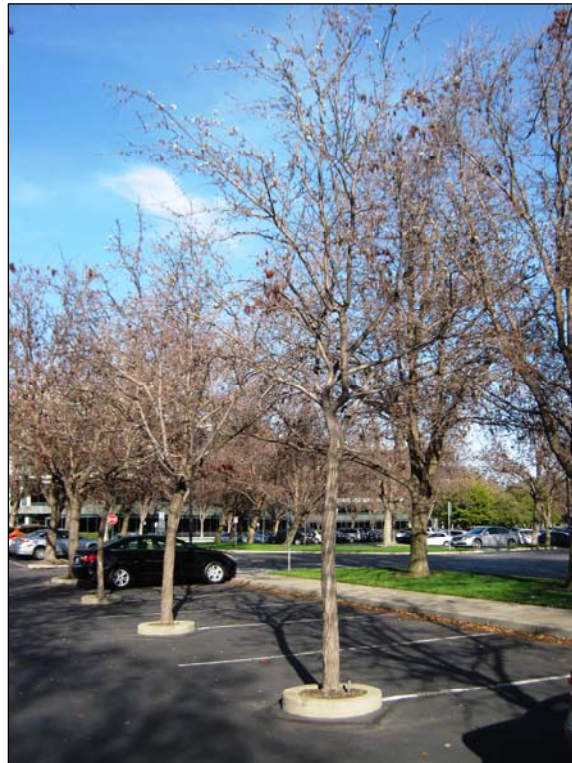
Average tree condition was good (277 trees or 61%), with 33% rated in fair condition (152 trees) and 6% in poor condition (28 trees). The good condition of the trees is a reflection of the young ages of most of the trees, the species adaptability to the site conditions, and the quality of maintenance practices employed. Tree size ranged from 4" to 34" in diameter with an average of approximately 11 inches.

There were 12 species represented at the site. The most frequently occurring species was callery pear, with 166 trees or 36% of the population. One hundred fifteen (115) of the trees (69%) were in good condition, 49 were in fair (30%) and two (2) were in poor (1%). In general, the species had been planted in the larger end-cap islands or landscaped areas throughout the parking lots, where adequate soil volume and moisture were available. Where the tree had been planted in small islands, drought stress and stunted growth resulted (**Photo 1**).

Southern live oak, with 147 trees (32% of the population), was the second most prevalent species. Condition of the Southern live oaks was good (93 trees, 63%), with 40 in fair (27%) and 14 in poor (10%). Trees in fair to poor condition appeared to be experiencing drought stress. It was not clear if this was the result of insufficient irrigation being applied or insufficient irrigation getting to the roots, but it was not consistent from island to island.

There were several planting patterns present across the site:

1. Thirty (30) mature river red gum and three (3) red iron bark eucalyptus were growing along the eastern property boundary, adjacent to Tassajara creek. This represented a partial survey of a larger row of trees.
2. Thirty-seven (37) Canary Island pines, 20 Chinese tallows and eight (8) blackwood acacias were planted on the earthen berm in the southwestern corner of the site.



**Photo 1:** In general, callery pears had been planted in larger end-cap islands or landscaped areas (background). Where the species had been planted in small parking lot islands (foreground), drought stress and stunted growth were common.

The City of Pleasanton defines a tree with a diameter of 18” or greater, or a height of 35’ or greater, as a “Heritage” tree. There were 97 “Heritage” trees assessed. Heritage status for individual trees is included in the **Tree Assessment Form** (see attachments). Heights of all trees close to 35’ were verified in the field.



**Photo 2:** Canary Island pines, blackwood acacias and Chinese tallows had been planted in the southwest corner of the site. Canary Island pines and blackwood acacias were growing on the soil berm and Chinese tallows were planted in the Rosewood Dr. frontage landscape.

**Table 1: Condition ratings and frequency of occurrence of trees  
 California Center, Pleasanton**

Common Name	Scientific Name	Condition Rating			No. of Trees
		Poor (1-2)	Fair (3)	Good (4-5)	
Albizia	<i>Albizia julibrissin</i>	-	1	3	4
Blackwood acacia	<i>Acacia melanoxylon</i>	1	5	2	8
Callery pear	<i>Pyrus calleryana</i>	2	49	115	166
Canary island pine	<i>Pinus caneriensis</i>	3	15	19	37
Chinese tallow	<i>Triadica sebifera</i>	-	10	20	32
Coast live oak	<i>Quercus agrifolia</i>	-	1	-	1
Crab apple	<i>Malus floribunda</i>	-	2	12	14
Evergreen ash	<i>Fraxinus uhdei</i>	1	7	5	13
Red iron bark	<i>Eucalyptus sideroxylon</i>	-	3	-	3
Red river gum	<i>Eucalyptus camaldulensis</i>	7	19	4	30
Southern live oak	<i>Quercus virginiana</i>	14	40	93	147
White alder	<i>Alnus rhombifolia</i>	-	-	2	2
<b>Total</b>		<b>28</b>	<b>152</b>	<b>277</b>	<b>457</b>

### ***Suitability for Preservation***

Before evaluating the impacts that will occur during development, it is important to consider the quality of the tree resource itself, and the potential for individual trees to function well over an extended length of time. Trees that are preserved on development sites must be carefully selected to make sure that they may survive development impacts, adapt to a new environment and perform well in the landscape.

Our goal is to identify trees that have the potential for long-term health, structural stability and longevity. For trees growing in open fields, away from areas where people and property are present, structural defects and/or poor health presents a low risk of damage or injury if they fail. However, we must be concerned about safety in use areas. Therefore, where development encroaches into existing plantings, we must consider their structural stability as well as their potential to grow and thrive in a new environment.

Evaluation of suitability for preservation considers several factors:

- **Tree health**  
Healthy, vigorous trees are better able to tolerate impacts such as root injury, demolition of existing structures, changes in soil grade and moisture, and soil compaction than are non-vigorous trees.
- **Structural integrity**  
Trees with significant amounts of wood decay and other structural defects that cannot be corrected are likely to fail. Such trees should not be preserved in areas where damage to people or property is likely.
- **Species response**  
There is a wide variation in the response of individual species to construction impacts and changes in the environment. In our experience, for example, blackwood acacia is sensitive to construction impacts, while Southern live oak is tolerant of site disturbance.
- **Tree age and longevity**  
Old trees, while having significant emotional and aesthetic appeal, have limited physiological capacity to adjust to an altered environment. Young trees are better able to generate new tissue and respond to change.
- **Invasiveness**  
Trees with the potential to invade an established forest, reproduce rapidly, and grow in sub-optimal environments are considered invasive. Species with these qualities may alter the function and aesthetics of the forest. No invasive species were assessed at the CarrAmerica site.

Each tree was rated for suitability for preservation based upon its age, health, structural condition and ability to safely coexist within a development environment. Suitability ratings are provided for each tree in the ***Tree Assessment Forms*** (see attachments). A summary is provided in Table 2 (following page).

We consider trees with good suitability for preservation to be the best candidates for preservation. We do not recommend retention of trees with poor suitability for preservation in areas where people or property will be present. Retention of trees with moderate suitability for preservation depends upon the intensity of proposed site changes.

**Table 2: Tree Suitability for Preservation  
California Center, Pleasanton**

**Good** These are trees with good health and structural stability that have the potential for longevity at the site. One hundred sixty-one (161) trees were of good suitability for preservation, including 63 callery pears, 57 Southern live oaks, 14 Canary Island pines, 12 Chinese tallows, seven (7) crab apples, three (3) evergreen ash, two (2) red river gums, two (2) albizias, and one (1) white alder.

---

**Moderate** Trees in this category have fair health and/or structural defects that may be abated with treatment. Trees in this category require more intense management and monitoring, and may have shorter life spans than those in the “good” category. Two hundred nineteen (219) trees were of moderate suitability for preservation, including 83 callery pears, 66 Southern live oaks, 18 Canary Island pines, 19 Chinese tallows, 14 red river gums, six (6) crab apples, four (4) evergreen ash, three (3) blackwood acacias, two (2) red iron barks, two (2) albizias, one (1) coast live oak., and one (1) white alder.

---

**Poor** Trees in this category are in poor health or have significant defects in structure that cannot be abated with treatment. These trees can be expected to decline regardless of management. The species or individual tree may possess either characteristics that are undesirable in landscape settings or be unsuited for use areas. Seventy-seven (77) trees were of poor suitability for preservation, including 24 Southern live oaks, 20 callery pears, 14 red river gums, six (6) evergreen ash, five (5) Canary Island pines, five (5) Blackwood acacias, and one (1) each of crab apple, red iron bark, and Chinese tallow.

---

### ***Evaluation of Impacts and Recommendations***

Appropriate tree retention develops a practical match between the location and intensity of construction activities and the quality and health of trees. The ***Tree Assessment Form*** was the reference point for tree condition and quality. Potential impacts from construction were evaluated using the Grading Plan, Sheets C1, C2 and C2.1, prepared by BKF (dated September 28, 2012).

The plan proposes the following changes:

- A residential development would be constructed across the southern end of the site, adjacent to Owens and Rosewood Drives. The existing entry and surface parking would be reconfigured in this area.
- A 4-level parking garage would be constructed in the southeast corner of the site, between the new residential building to the south and the existing office buildings to the north. Some of the existing surface parking would be reconfigured in this area for traffic flow.
- Two lawns adjacent to the existing office buildings would be converted in to surface parking lots.
- Two new entries would be installed, one in the southwest corner and one in the southeast corner of the site, connecting the residential development to Rosewood and Owens Drives.
- A portion one of the medians on Owens would be removed for a turn lane.

The plan depicted grading for the buildings, new parking lot footprints and reconfigured parking lots and drive aisles. Drainage, and utilities were not included on the Plan. Locations of trees in parking lot islands were considered accurate, but accurate tree trunk locations for the remainder of the trees were not included.

Potential impacts from construction were estimated for each tree. Based on my assessment of the current plans, I recommend removal for 305 trees. Impacts were as follows:

- Construction of the residential development would directly impact 214 trees, 36 of which qualified as “Heritage”.
- Reconfiguration of the surface lots and drive aisles would remove 44 trees, eight (8) of which qualified as “Heritage”.
- Construction of the new parking garage would impact 42 trees, three (3) of which qualified as “Heritage”.
- Five (5) trees would be impacted by removal of the median on Owens, none of which qualified as “Heritage”.

Forty-seven (47) of the trees recommended for removal qualified as “Heritage”, and 47 were of poor suitability for preservation. Trees recommended for removal are listed in **Table 3** (see Attachments), along with their Heritage status and a description of impacts.

Based on the proposed changes I recommend preserving 152 trees, including 50 “Heritage” trees. Twelve (12) of the trees along the eastern drive isle are preliminarily proposed for preservation (#557-568). The details of the road design, such as specific grade changes, curb design and proximity to trees, have not been finalized. Once the design for this area has been set, a final determination of if some or all of the trees can be preserved will be made.

Recommendations for management of preserved trees, and specific guidelines for maintaining the health and vitality of trees through the development processes, are provided in the **Tree Preservation Guidelines** that follow. Preservation of trees is predicated on adhering to the **Tree Preservation Guidelines** provided.

Twenty-six (26) trees have been proposed for preservation adjacent to the new garage structure. These trees will require pruning of one side of the crown to provide construction and building clearance. Pruning recommendations are provided in the **Tree Preservation Guidelines** that follow.

### ***Tree Preservation Guidelines***

The goal of tree preservation is not merely tree survival during development but maintenance of tree health and beauty for many years. Trees retained on sites that are either subject to extensive injury during construction or are inadequately maintained become a liability rather than an asset. The response of individual trees will depend on the amount of excavation and grading, the care with which demolition is undertaken, and the construction methods. Coordinating any construction activity inside the **TREE PROTECTION ZONE** can minimize these impacts.

The following recommendations will help reduce impacts to trees from development and maintain and improve their health and vitality through the clearing, grading and construction phases.



### **Design recommendations**

1. The Consulting Arborist shall review all project plans with regard to tree impact and necessary protection measures. This includes, but is not limited to, demolition, grading, drainage, site improvement and landscape plans.
2. Have the horizontal and vertical elevations of trees identified for preservation that are located around the perimeter of the site established and included on all plans.
3. A **TREE PROTECTION ZONE** shall be established around each on-site tree to be preserved. The **TPZ** shall be established as described below. All trees not listed below shall have the **TPZ** established at the dripline in all directions. No grading, excavation, construction or storage of materials shall occur within that zone.
  - The **TPZ** for trees #26, 74-80, 473-481, 485-494, 511-522, 530, 531, 533-545, 557-574, 1009-1023, 1057, and 1066-1069 shall be established at the back of the adjacent curb in the direction of the development, and at the dripline in all other directions.
4. No underground services including utilities, sub-drains, water or sewer shall be placed in the **TREE PROTECTION ZONE**.
5. **Tree Preservation Notes**, prepared by the Consulting Arborist, should be included on all plans.
6. Any herbicides placed under paving materials must be safe for use around trees and labeled for that use.
7. Irrigation systems must be designed so that no trenching will occur within the **TREE PROTECTION ZONE**.
8. As trees withdraw water from the soil, expansive soils may shrink within the root area. Therefore, foundations, footings and pavements on expansive soils near trees should be designed to withstand differential displacement.
9. Do not apply lime within 50' of any tree to be preserved. Lime is toxic to tree roots.
10. It is critical to maintaining tree health and longevity that the existing irrigation be maintained in proper working order. This is especially true for the Southern live oaks and callery pears preserved within parking lot islands. If the existing irrigation system cannot be maintained, supplemental irrigation should be applied during the dry summer months (typically May through October).

### **Pre-construction treatments and recommendations**

1. The construction superintendent shall meet with the Consulting Arborist before beginning work to discuss work procedures and tree protection.
2. Fence all trees to be retained to completely enclose the **TREE PROTECTION ZONE** prior to demolition, grubbing or grading. Fences shall be 6 ft. chain link. Fences are to remain until all grading and construction is completed.
3. Twenty-six (26) trees have been preliminarily identified for pruning to provide construction and building clearance, including trees #475-481, 493, 494, 511, 512, 521, 522, 530, 531, 533-538, and 634-638.

4. Prune trees to be preserved to clean the crown and to provide clearance. All pruning shall be completed by a Certified Arborist or Tree Worker and adhere to the latest edition of the ANSI Z133 and A300 standards as well as the *Best Management Practices -- Tree Pruning* published by the International Society of Arboriculture. Brush can be chipped and spread beneath the trees within the **TREE PROTECTION ZONE**.
5. Trees to be removed that have canopies touching trees to remain shall be removed by a Certified Arborist in a manner to avoid damage to remaining trees. The stumps of those removed trees shall be ground out 12" below grade and not pulled out as this could injure remaining trees.

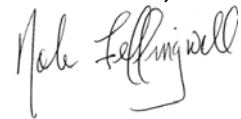
#### **Recommendations for tree protection during construction**

1. Prior to beginning work, all contractors working in the vicinity of trees to be preserved are required to meet with the Consulting Arborist at the site to review all work procedures, access routes, storage areas and tree protection measures.
2. No grading, construction, demolition or other work shall occur within the **TREE PROTECTION ZONE**. Any modifications must be approved and monitored by the Consulting Arborist.
3. If the existing irrigation system is non-operational, supplemental irrigation shall be applied to retained trees between May and October at the direction of the Consulting Arborist.
4. If injury should occur to any tree during construction, it should be evaluated as soon as possible by the Consulting Arborist so that appropriate treatments can be applied.
5. No excess soil, chemicals, debris, equipment or other materials shall be dumped or stored within the **TREE PROTECTION ZONE**.
6. Any additional tree pruning needed for clearance during construction must be performed by a Certified Arborist and not by construction personnel.

#### **Maintenance of impacted trees**

Preserved trees will experience a physical environment different from that pre-development. As a result, tree health and structural stability should be monitored. Occasional pruning, fertilization, mulch, pest management, replanting and irrigation may be required. In addition, provisions for monitoring both tree health and structural stability following construction must be made a priority. As trees age, the likelihood of failure of branches or entire trees increases. Therefore, annual inspection for hazard potential is recommended.

#### **HortScience, Inc.**



John Leffingwell  
Board Certified Master Arborist #WE-3966B  
Registered Consulting Arborist #442

**Attached:**      **Table 3: Trees Recommended for Removal**  
                         **Tables 4 and 5: Appraisal of Value**  
                         **Tree Assessment Form**  
                         **Tree Assessment Map**

**Table 3: Trees recommended for removal  
 California Center, Pleasanton**

<b>Tree #</b>	<b>Species</b>	<b>Trunk Diameter (in.)</b>	<b>Heritage?</b>	<b>Reason for removal</b>
6	Chinese tallow	11	No	Within residential develop.
7	Chinese tallow	10	No	Within residential develop.
8	Chinese tallow	10	No	Within residential develop.
9	Chinese tallow	12	No	Within residential develop.
10	Chinese tallow	10	No	Within residential develop.
11	Chinese tallow	8	No	Within residential develop.
12	Chinese tallow	11	No	Within residential develop.
13	Chinese tallow	12	No	Within residential develop.
14	Chinese tallow	10	No	Within residential develop.
15	Chinese tallow	12	No	Within residential develop.
16	Chinese tallow	13	No	Within residential develop.
17	Blackwood acacia	24	Yes	Within residential develop.
18	Blackwood acacia	23	Yes	Within residential develop.
19	Blackwood acacia	20	Yes	Within residential develop.
20	Blackwood acacia	14	Yes	Within residential develop.
21	Blackwood acacia	16	Yes	Within residential develop.
31	Callery pear	12	No	Within residential develop.
32	Callery pear	12	No	Within residential develop.
33	Callery pear	14	Yes	Within residential develop.
34	Callery pear	12	No	Within residential develop.
35	Callery pear	11	No	Within residential develop.
36	Callery pear	12	Yes	Within residential develop.
37	Callery pear	11	No	Within residential develop.
38	Callery pear	8	No	Within residential develop.
39	Callery pear	10	No	Within residential develop.
40	Callery pear	10	No	Within residential develop.
41	Southern live oak	6	No	Within residential develop.
42	Southern live oak	5	No	Within residential develop.
43	Southern live oak	5	No	Within residential develop.
44	Southern live oak	5	No	Within residential develop.
45	Southern live oak	5	No	Within residential develop.
46	Southern live oak	8	No	Within residential develop.
47	Southern live oak	6	No	Within residential develop.
48	Southern live oak	5	No	Within residential develop.
49	Southern live oak	5	No	Within residential develop.
50	Southern live oak	6	No	Within residential develop.
51	Southern live oak	7	No	Within residential develop.
52	Southern live oak	9	No	Within residential develop.
53	Southern live oak	11	No	Within residential develop.
54	Southern live oak	12	No	Within residential develop.
55	Southern live oak	11	No	Within residential develop.
56	Southern live oak	8	No	Within residential develop.
57	Southern live oak	9	No	Within residential develop.
58	Southern live oak	8	No	Within residential develop.
59	Southern live oak	8	No	Within residential develop.
60	Southern live oak	8	No	Within residential develop.
61	Southern live oak	11	No	Within residential develop.

(Continued, following page)

**Table 3: Trees recommended for removal, continued**  
**California Center, Pleasanton**

<b>Tree #</b>	<b>Species</b>	<b>Trunk Diameter (in.)</b>	<b>Heritage?</b>	<b>Reason for removal</b>
62	Southern live oak	7	No	Within residential develop.
63	Southern live oak	8	No	Within residential develop.
64	Southern live oak	6	No	Within residential develop.
65	Southern live oak	7	No	Within residential develop.
67	Southern live oak	7	No	Within new drive aisle
68	Southern live oak	10	No	Within new drive aisle
69	Southern live oak	10	No	Within new drive aisle
70	Southern live oak	9	No	Within new drive aisle
71	Southern live oak	8	No	Within new drive aisle
72	Southern live oak	14	No	Within new drive aisle
73	Southern live oak	11	No	Within new drive aisle
87	Callery pear	13	No	Impacted by parking stalls
139	White alder	14	No	Within new parking
142	White alder	18	Yes	Within new parking
495	Southern live oak	5	No	Within garage
496	Southern live oak	6	No	Within garage
497	Southern live oak	8	No	Within garage
498	Southern live oak	7	No	Within garage
499	Callery pear	15	Yes	Within garage
500	Callery pear	8	No	Within garage
501	Callery pear	13	No	Within garage
502	Callery pear	13	No	Within garage
503	Callery pear	13	No	Within garage
504	Callery pear	11	No	Within garage
505	Callery pear	11	No	Within garage
506	Callery pear	11	No	Within garage
507	Southern live oak	6	No	Within garage
508	Southern live oak	6	No	Within garage
509	Southern live oak	7	No	Within garage
510	Southern live oak	5	No	Within garage
523	Southern live oak	6	No	Within garage
524	Southern live oak	13	No	Within garage
525	Southern live oak	8	No	Within garage
526	Callery pear	11	No	Within garage
527	Callery pear	11	No	Within garage
528	Callery pear	14	No	Within garage
529	Callery pear	14	Yes	Within garage
532	Callery pear	13	Yes	Within garage
577	Canary island pine	17	Yes	Within residential develop.
578	Canary island pine	16	Yes	Within residential develop.
579	Canary island pine	19	Yes	Within residential develop.
580	Canary island pine	16	Yes	Within residential develop.
581	Canary island pine	17	Yes	Within residential develop.
582	Canary island pine	18	Yes	Within residential develop.
583	Canary island pine	14	Yes	Within residential develop.
584	Canary island pine	16	No	Within residential develop.
585	Canary island pine	15	Yes	Within residential develop.

(Continued, following page)

**Table 3: Trees recommended for removal, continued  
 California Center, Pleasanton**

<b>Tree #</b>	<b>Species</b>	<b>Trunk Diameter (in.)</b>	<b>Heritage?</b>	<b>Reason for removal</b>
586	Canary island pine	12	No	Within residential develop.
587	Canary island pine	7	No	Within residential develop.
588	Canary island pine	16	Yes	Within residential develop.
589	Canary island pine	21	Yes	Within residential develop.
590	Canary island pine	14	No	Within residential develop.
591	Crab apple	9	No	Within residential develop.
592	Crab apple	6	No	Within residential develop.
593	Crab apple	9	No	Within residential develop.
594	Crab apple	8	No	Within residential develop.
595	Crab apple	7	No	Within residential develop.
596	Crab apple	6	No	Within residential develop.
597	Callery pear	14	Yes	Within residential develop.
598	Callery pear	11	No	Within residential develop.
599	Callery pear	11	No	Within residential develop.
600	Callery pear	10	No	Within residential develop.
601	Southern live oak	14	No	Within residential develop.
602	Southern live oak	14	No	Within residential develop.
603	Southern live oak	10	No	Within residential develop.
604	Southern live oak	6	No	Within residential develop.
605	Southern live oak	9	No	Within residential develop.
606	Southern live oak	9	No	Within residential develop.
607	Southern live oak	13	No	Within residential develop.
608	Southern live oak	10	No	Within residential develop.
609	Southern live oak	12	No	Within residential develop.
610	Callery pear	13	No	Within residential develop.
611	Callery pear	14	No	Within residential develop.
612	Southern live oak	4	No	Within residential develop.
613	Southern live oak	9	No	Within residential develop.
614	Southern live oak	11	No	Within residential develop.
615	Southern live oak	10	No	Within residential develop.
616	Southern live oak	13	No	Within residential develop.
617	Southern live oak	13	No	Within residential develop.
618	Southern live oak	15	No	Within residential develop.
619	Southern live oak	13	No	Within residential develop.
620	Southern live oak	12	No	Within residential develop.
621	Southern live oak	13	No	Within residential develop.
622	Callery pear	9	No	Within residential develop.
623	Callery pear	14	Yes	Within residential develop.
624	Callery pear	13	No	Within residential develop.
625	Callery pear	15	No	Within residential develop.
626	Southern live oak	11	No	Within residential develop.
627	Southern live oak	8	No	Within residential develop.
628	Southern live oak	12	No	Within residential develop.
629	Coast live oak	6	No	Within residential develop.
630	Southern live oak	11	No	Within residential develop.
631	Southern live oak	12	No	Within residential develop.
632	Southern live oak	12	No	Within residential develop.

(Continued, following page)

**Table 3: Trees recommended for removal, continued  
 California Center, Pleasanton**

<b>Tree #</b>	<b>Species</b>	<b>Trunk Diameter (in.)</b>	<b>Heritage?</b>	<b>Reason for removal</b>
633	Southern live oak	10	No	Within residential develop.
639	Southern live oak	11	No	Within garage
640	Southern live oak	10	No	Within garage
641	Southern live oak	11	No	Within garage
642	Southern live oak	8	No	Within garage
643	Southern live oak	9	No	Within garage
644	Southern live oak	8	No	Within garage
645	Southern live oak	10	No	Within garage
646	Southern live oak	8	No	Within garage
650	Southern live oak	7	No	Within new drive aisle
651	Southern live oak	10	No	Within new drive aisle
695	Callery pear	13	Yes	Within residential develop.
696	Callery pear	12	No	Within residential develop.
699	Southern live oak	11	No	Within residential develop.
700	Southern live oak	7	No	Within residential develop.
701	Southern live oak	10	No	Within residential develop.
702	Southern live oak	12	No	Within residential develop.
703	Southern live oak	11	No	Within residential develop.
704	Southern live oak	9	No	Within new drive aisle
705	Southern live oak	9	No	Within new parking
706	Southern live oak	8	No	Within garage
707	Southern live oak	13	No	Within garage
723	Chinese tallow	13	No	Within residential develop.
724	Chinese tallow	10	No	Within residential develop.
725	Chinese tallow	8	No	Within residential develop.
726	Chinese tallow	9	No	Within residential develop.
727	Chinese tallow	11	No	Within residential develop.
728	Canary island pine	9	Yes	Within residential develop.
729	Albizia	6	No	Within residential develop.
730	Albizia	7	No	Within residential develop.
731	Albizia	7	No	Within residential develop.
732	Albizia	6	No	Within residential develop.
733	Canary island pine	14	Yes	Within residential develop.
734	Canary island pine	21	Yes	Within residential develop.
735	Canary island pine	19	Yes	Within residential develop.
736	Canary island pine	19	Yes	Within residential develop.
737	Canary island pine	18	Yes	Within residential develop.
738	Canary island pine	17	No	Within residential develop.
739	Canary island pine	19	Yes	Within residential develop.
740	Canary island pine	18	Yes	Within residential develop.
741	Canary island pine	19	Yes	Within residential develop.
742	Canary island pine	15	No	Within residential develop.
743	Canary island pine	8	No	Within residential develop.
745	Canary island pine	10	No	Within residential develop.
746	Canary island pine	16	Yes	Within residential develop.
747	Canary island pine	14	No	Within residential develop.
748	Canary island pine	18	Yes	Within residential develop.

(Continued, following page)

**Table 3: Trees recommended for removal, continued  
 California Center, Pleasanton**

<b>Tree #</b>	<b>Species</b>	<b>Trunk Diameter (in.)</b>	<b>Heritage?</b>	<b>Reason for removal</b>
749	Canary island pine	24	Yes	Within residential develop.
750	Crab apple	6	No	Within residential develop.
751	Crab apple	8	No	Within residential develop.
752	Crab apple	7	No	Within residential develop.
753	Crab apple	7	No	Within residential develop.
754	Crab apple	7	No	Within residential develop.
755	Crab apple	6	No	Within residential develop.
756	Crab apple	6	No	Within residential develop.
757	Crab apple	7	No	Within residential develop.
758	Callery pear	11	Yes	Within residential develop.
759	Callery pear	9	No	Within residential develop.
760	Callery pear	10	No	Within residential develop.
761	Callery pear	9	No	Within residential develop.
762	Southern live oak	6	No	Within residential develop.
763	Southern live oak	7	No	Within residential develop.
764	Southern live oak	6	No	Within residential develop.
765	Callery pear	9	No	Within residential develop.
766	Callery pear	10	No	Within residential develop.
767	Callery pear	11	No	Within residential develop.
768	Callery pear	12	No	Within residential develop.
769	Southern live oak	8	No	Within residential develop.
770	Southern live oak	12	No	Within residential develop.
771	Southern live oak	11	No	Within residential develop.
772	Southern live oak	9	No	Within residential develop.
773	Southern live oak	8	No	Within residential develop.
774	Callery pear	13	No	Within residential develop.
775	Callery pear	12	No	Within residential develop.
776	Callery pear	14	No	Within residential develop.
777	Callery pear	13	No	Within residential develop.
778	Southern live oak	9	No	Within residential develop.
779	Southern live oak	10	No	Within new drive aisle
780	Southern live oak	8	No	Within new drive aisle
781	Callery pear	6	No	Within new drive aisle
782	Callery pear	14	No	Within new drive aisle
783	Callery pear	13	No	Within new parking
784	Callery pear	14	No	Within new parking
1024	Callery pear	11	No	Within residential develop.
1025	Callery pear	10	No	Within residential develop.
1026	Southern live oak	11	No	Within residential develop.
1027	Southern live oak	9	No	Within residential develop.
1028	Southern live oak	14	No	Within residential develop.
1029	Southern live oak	12	No	Within residential develop.
1030	Callery pear	13	Yes	Within new parking
1031	Callery pear	12	Yes	Within new parking
1032	Callery pear	12	Yes	Within new parking
1033	Callery pear	12	Yes	Within new parking
1034	Callery pear	9	No	Within new parking

(Continued, following page)

**Table 3: Trees recommended for removal, continued  
 California Center, Pleasanton**

<b>Tree #</b>	<b>Species</b>	<b>Trunk Diameter (in.)</b>	<b>Heritage?</b>	<b>Reason for removal</b>
1035	Callery pear	13	Yes	Within new drive aisle
1036	Callery pear	14	Yes	Within new drive aisle
1037	Southern live oak	6	No	Within new drive aisle
1038	Southern live oak	8	No	Within residential develop.
1039	Southern live oak	9	No	Within residential develop.
1040	Southern live oak	8	No	Within residential develop.
1041	Southern live oak	12	No	Within residential develop.
1042	Southern live oak	12	No	Within residential develop.
1043	Southern live oak	8	No	Within residential develop.
1044	Southern live oak	6	No	Within residential develop.
1045	Southern live oak	9	No	Within residential develop.
1046	Southern live oak	9	No	Within residential develop.
1047	Southern live oak	12	No	Within residential develop.
1048	Southern live oak	7	No	Within residential develop.
1049	Southern live oak	10	No	Within residential develop.
1050	Southern live oak	11	No	Within residential develop.
1051	Southern live oak	10	No	Within residential develop.
1052	Southern live oak	7	No	Within new drive aisle
1053	Southern live oak	9	No	Within new drive aisle
1054	Southern live oak	6	No	Within new drive aisle
1055	Southern live oak	11	No	Within new drive aisle
1056	Southern live oak	7	No	Within new drive aisle
1058	Southern live oak	7	No	Within garage
1059	Southern live oak	8	No	Within garage
1060	Southern live oak	7	No	Within garage
1061	Southern live oak	8	No	Within garage
1062	Southern live oak	6	No	Within garage
1063	Southern live oak	6	No	Within garage
1064	Callery pear	14	No	Within garage
1065	Callery pear	13	No	Within garage
1070	Callery pear	13	No	Within new drive aisle
1071	Callery pear	12	No	Within new drive aisle
1072	Callery pear	14	No	Within residential develop.
1073	Callery pear	14	No	Within residential develop.
1074	Callery pear	12	No	Within residential develop.
1075	Callery pear	12	No	Within residential develop.
1076	Callery pear	11	No	Within residential develop.
1077	Callery pear	6	No	Within residential develop.
1078	Callery pear	12	No	Within residential develop.
1079	Callery pear	14	No	Within residential develop.
1080	Callery pear	15	No	Within new parking
1081	Callery pear	15	No	Within new parking
1082	Callery pear	15	No	Within new parking
1087	Callery pear	14	No	Within new parking
1088	Callery pear	11	No	Within new drive aisle
1089	Callery pear	15	No	Within residential develop.
1090	Callery pear	17	Yes	Within residential develop.

(Continued, following page)



**Table 3: Trees recommended for removal, continued**  
**California Center, Pleasanton**

<b>Tree #</b>	<b>Species</b>	<b>Trunk Diameter (in.)</b>	<b>Heritage?</b>	<b>Reason for removal</b>
1091	Callery pear	12	No	Within residential develop.
1092	Callery pear	9	No	Within residential develop.
1093	Callery pear	16	Yes	Within residential develop.
1094	Callery pear	16	Yes	Within residential develop.
1095	Callery pear	13	No	Within residential develop.
1096	Callery pear	14	No	Within new drive aisle
1097	Callery pear	17	Yes	Within new drive aisle
1103	Callery pear	15	No	Within new drive aisle
1104	Callery pear	13	No	Within new drive aisle
1105	Callery pear	5	No	Within residential develop.
1106	Callery pear	6	No	Within residential develop.
1107	Callery pear	5	No	Within residential develop.
1108	Callery pear	7	No	Within residential develop.
1109	Callery pear	5	No	Within residential develop.
1110	Callery pear	5	No	Within residential develop.
1111	Callery pear	6	No	Within residential develop.
1112	Callery pear	8	No	Within residential develop.
1113	Callery pear	8	No	Within residential develop.
1115	Evergreen ash	8	No	Within new turn lane
1116	Evergreen ash	13	No	Within new turn lane
1117	Evergreen ash	8	No	Within new turn lane
1118	Evergreen ash	7	No	Within new turn lane
1119	Evergreen ash	11	No	Within new turn lane

**Appraisal of Value**

The City of Pleasanton requires that the value of all the surveyed trees be established. To accomplish this, I used the standard methods found in *Guide for Plant Appraisal*, 9th edition (published in 2000 by the International Society of Arboriculture, Champaign IL). In addition, I referred to *Species Classification and Group Assignment* (2004), a publication of the Western Chapter of the International Society of Arboriculture. These two documents outline the methods employed in tree appraisal.

The value of landscape trees is based upon four factors: size, species, condition and location. Size is measured as trunk diameter, normally 54" above grade. The species factor considers the adaptability and appropriateness of the plant in the East Bay area. The *Species Classification and Group Assignment* lists recommended species ratings and evaluations. Condition reflects the health and structural integrity of the individual, as noted in the **Tree Survey Form**. Location considers the site, placement and contribution of the tree in its surrounding landscape.

The appraised value of the 152 trees recommended for preservation is \$299,550 (**Table 4**).

The appraised value of the 305 trees recommended for removal is \$656,450 (**Table 5**, page 5). The appraised value of the 214 trees impacted by the proposed residential portion of the development is \$480,800.

**Table 4: Appraised value of trees recommended for preservation**

Tree No.	Species	Trunk diameter (in.)	Appraised value (\$)
5	Chinese tallow	10	1,450
24	Blackwood acacia	21	2,050
25	Blackwood acacia	19	1,000
26	Blackwood acacia	19	2,350
66	Southern live oak	5	300
74	Southern live oak	11	3,950
75	Southern live oak	10	2,550
76	Southern live oak	11	3,050
77	Southern live oak	9	1,500
78	Southern live oak	10	2,550
79	Callery pear	15	3,150
80	Callery pear	6	400
85	Callery pear	16	3,550
86	Callery pear	16	3,550
473	Callery pear	10	1,450
474	Callery pear	8	650
475	Callery pear	14	2,750
476	Callery pear	8	650
477	Callery pear	13	2,350
478	Callery pear	13	2,350
479	Callery pear	12	2,000
480	Callery pear	10	1,450
481	Callery pear	12	2,000
482	Southern live oak	7	1,250
483	Southern live oak	7	1,250
484	Southern live oak	7	1,250
485	Callery pear	11	1,700
486	Callery pear	8	900

(Continued, following page)

**Table 4: Appraised value of trees recommended for preservation, continued**

<b>Tree No.</b>	<b>Species</b>	<b>Trunk diameter (in.)</b>	<b>Appraised value (\$)</b>
487	Callery pear	9	1,500
488	Callery pear	9	1,150
489	Callery pear	9	1,150
490	Callery pear	10	1,450
491	Callery pear	9	850
492	Callery pear	11	1,200
493	Callery pear	9	850
494	Callery pear	9	1,150
511	Callery pear	9	1,150
512	Callery pear	7	500
513	Callery pear	7	300
514	Callery pear	8	650
515	Southern live oak	6	700
516	Callery pear	8	650
517	Southern live oak	5	300
518	Southern live oak	5	300
519	Callery pear	8	650
520	Callery pear	8	650
521	Callery pear	8	650
522	Callery pear	8	900
530	Callery pear	12	2,000
531	Callery pear	13	2,350
533	Callery pear	13	2,350
534	Callery pear	11	1,700
535	Callery pear	10	600
536	Callery pear	10	1,450
537	Callery pear	10	1,450
538	Callery pear	10	1,450
539	Callery pear	10	1,450
540	Callery pear	10	1,450
541	Callery pear	10	1,450
542	Callery pear	12	2,000
543	Callery pear	11	1,200
544	Callery pear	10	1,450
545	Callery pear	10	1,450
546	Callery pear	7	500
547	Callery pear	16	3,550
548	Callery pear	16	3,550
551	Red river gum	15	1,850
552	Red river gum	12	850
553	Red river gum	13	1,400
554	Red river gum	18	1,900
555	Red river gum	19	2,100
556	Red river gum	27	5,950
557	Red river gum	16	1,500
558	Red river gum	13	1,000
559	Red iron bark	10	400
560	Red river gum	13	1,000

**(Continued, following page)**

**Table 4: Appraised value of trees recommended for preservation, continued**

<b>Tree No.</b>	<b>Species</b>	<b>Trunk diameter (in.)</b>	<b>Appraised value (\$)</b>
561	Red river gum	13	1,000
562	Red river gum	18	1,900
563	Red river gum	16	900
564	Red iron bark	18	1,300
565	Red river gum	9	100
566	Red river gum	17	1,000
567	Red river gum	18	1,900
568	Red river gum	34	6,550
569	Canary island pine	13	2,550
570	Canary island pine	18	4,800
571	Canary island pine	19	6,850
572	Canary island pine	19	6,850
573	Canary island pine	19	6,850
574	Canary island pine	25	11,850
575	Evergreen ash	24	4,550
576	Evergreen ash	21	3,500
634	Callery pear	12	2,050
635	Callery pear	12	1,450
636	Callery pear	12	1,450
637	Callery pear	12	2,050
638	Callery pear	15	3,200
647	Southern live oak	6	400
648	Southern live oak	9	1,500
649	Southern live oak	10	2,550
652	Chinese tallow	13	3,750
653	Chinese tallow	11	1,700
654	Chinese tallow	9	1,650
655	Chinese tallow	9	1,150
656	Chinese tallow	13	3,300
697	Southern live oak	11	3,050
713	Chinese tallow	10	1,450
714	Chinese tallow	10	2,000
715	Chinese tallow	12	2,850
716	Chinese tallow	13	3,300
717	Chinese tallow	15	4,400
718	Chinese tallow	9	1,150
719	Chinese tallow	11	2,400
720	Chinese tallow	11	1,700
721	Chinese tallow	8	900
722	Chinese tallow	11	2,400
744	Evergreen ash	14	1,600
785	Southern live oak	8	2,100
1009	Red river gum	9	300
1010	Red river gum	14	1,150
1011	Red river gum	17	1,700
1012	Red iron bark	14	800
1013	Red river gum	15	1,350
1014	Red river gum	18	1,900
1015	Red river gum	23	3,100

**(Continued, following page)**

**Table 4: Appraised value of trees recommended for preservation, continued**

<b>Tree No.</b>	<b>Species</b>	<b>Trunk diameter (in.)</b>	<b>Appraised value (\$)</b>
1016	Red river gum	9	300
1017	Red river gum	13	600
1018	Red river gum	13	1,000
1019	Red river gum	26	5,350
1020	Red river gum	16	1,500
1021	Red river gum	17	1,700
1022	Red river gum	12	150
1023	Red river gum	16	1,500
1057	Southern live oak	6	400
1066	Callery pear	13	1,700
1067	Callery pear	12	1,450
1068	Callery pear	16	3,550
1069	Callery pear	6	700
1083	Callery pear	15	3,150
1084	Callery pear	16	2,550
1085	Callery pear	16	3,550
1086	Callery pear	15	3,150
1098	Callery pear	15	3,150
1099	Callery pear	9	850
1100	Callery pear	16	3,550
1101	Callery pear	14	2,750
1102	Callery pear	16	3,550
1114	Evergreen ash	17	1,650
1120	Evergreen ash	9	300
1121	Evergreen ash	13	1,000
1122	Evergreen ash	16	2,050
1123	Evergreen ash	11	700
<b>Total</b>			<b>\$299,550</b>

**Table 5: Appraised value of trees recommended for removal**

<b>Tree No.</b>	<b>Species</b>	<b>Trunk diameter (in.)</b>	<b>Heritage?</b>	<b>Appraised value (\$)</b>
6	Chinese tallow	11	No	2,400
7	Chinese tallow	10	No	2,000
8	Chinese tallow	10	No	2,000
9	Chinese tallow	12	No	2,850
10	Chinese tallow	10	No	2,000
11	Chinese tallow	8	No	1,300
12	Chinese tallow	11	No	2,400
13	Chinese tallow	12	No	2,850
14	Chinese tallow	10	No	2,000
15	Chinese tallow	12	No	2,850
16	Chinese tallow	13	No	3,300
17	Blackwood acacia	24	Yes	2,700
18	Blackwood acacia	23	Yes	2,500
19	Blackwood acacia	20	Yes	1,900
20	Blackwood acacia	14	Yes	950
21	Blackwood acacia	16	Yes	1,700
31	Callery pear	12	No	2,000
32	Callery pear	12	No	2,000
33	Callery pear	14	Yes	2,750
34	Callery pear	12	No	2,000
35	Callery pear	11	No	1,200
36	Callery pear	12	Yes	2,000
37	Callery pear	11	No	1,700
38	Callery pear	8	No	650
39	Callery pear	10	No	1,450
40	Callery pear	10	No	1,450
41	Southern live oak	6	No	400
42	Southern live oak	5	No	100
43	Southern live oak	5	No	100
44	Southern live oak	5	No	100
45	Southern live oak	5	No	500
46	Southern live oak	8	No	1,650
47	Southern live oak	6	No	400
48	Southern live oak	5	No	100
49	Southern live oak	5	No	300
50	Southern live oak	6	No	1,250
51	Southern live oak	7	No	1,250
52	Southern live oak	9	No	2,700
53	Southern live oak	11	No	3,050
54	Southern live oak	12	No	550
55	Southern live oak	11	No	3,950
56	Southern live oak	8	No	1,650
57	Southern live oak	9	No	2,700
58	Southern live oak	8	No	1,650
59	Southern live oak	8	No	1,650

**(Continued, following page)**

**Table 5: Appraised value of trees recommended for removal, continued**

<b>Tree No.</b>	<b>Species</b>	<b>Trunk diameter (in.)</b>	<b>Heritage?</b>	<b>Appraised value (\$)</b>
60	Southern live oak	8	No	1,650
61	Southern live oak	11	No	3,050
62	Southern live oak	7	No	1,250
63	Southern live oak	8	No	2,100
64	Southern live oak	6	No	1,250
65	Southern live oak	7	No	1,250
67	Southern live oak	7	No	550
68	Southern live oak	10	No	3,300
69	Southern live oak	10	No	3,300
70	Southern live oak	9	No	1,500
71	Southern live oak	8	No	2,100
72	Southern live oak	14	No	6,350
73	Southern live oak	11	No	1,950
87	Callery pear	13	No	3,050
139	White alder	14	No	1,650
142	White alder	18	Yes	2,650
495	Southern live oak	5	No	500
496	Southern live oak	6	No	700
497	Southern live oak	8	No	1,200
498	Southern live oak	7	No	1,650
499	Callery pear	15	Yes	3,150
500	Callery pear	8	No	650
501	Callery pear	13	No	2,350
502	Callery pear	13	No	2,350
503	Callery pear	13	No	2,350
504	Callery pear	11	No	1,200
505	Callery pear	11	No	1,700
506	Callery pear	11	No	1,700
507	Southern live oak	6	No	700
508	Southern live oak	6	No	950
509	Southern live oak	7	No	900
510	Southern live oak	5	No	500
523	Southern live oak	6	No	950
524	Southern live oak	13	No	5,500
525	Southern live oak	8	No	1,650
526	Callery pear	11	No	1,700
527	Callery pear	11	No	1,700
528	Callery pear	14	No	2,750
529	Callery pear	14	Yes	2,750
532	Callery pear	13	Yes	2,350
577	Canary island pine	17	Yes	3,050
578	Canary island pine	16	Yes	2,750
579	Canary island pine	19	Yes	3,800
580	Canary island pine	16	Yes	2,750
581	Canary island pine	17	Yes	3,050

(Continued, following page)

**Table 5: Appraised value of trees recommended for removal, continued**

<b>Tree No.</b>	<b>Species</b>	<b>Trunk diameter (in.)</b>	<b>Heritage?</b>	<b>Appraised value (\$)</b>
582	Canary island pine	18	Yes	4,800
583	Canary island pine	14	Yes	1,250
584	Canary island pine	16	No	2,750
585	Canary island pine	15	Yes	2,400
586	Canary island pine	12	No	950
587	Canary island pine	7	No	100
588	Canary island pine	16	Yes	3,800
589	Canary island pine	21	Yes	8,350
590	Canary island pine	14	No	2,100
591	Crab apple	9	No	1,750
592	Crab apple	6	No	800
593	Crab apple	9	No	1,750
594	Crab apple	8	No	1,350
595	Crab apple	7	No	1,050
596	Crab apple	6	No	800
597	Callery pear	14	Yes	3,500
598	Callery pear	11	No	1,200
599	Callery pear	11	No	2,200
600	Callery pear	10	No	1,450
601	Southern live oak	14	No	4,950
602	Southern live oak	14	No	6,350
603	Southern live oak	10	No	2,550
604	Southern live oak	6	No	950
605	Southern live oak	9	No	2,700
606	Southern live oak	9	No	2,700
607	Southern live oak	13	No	5,500
608	Southern live oak	10	No	2,550
609	Southern live oak	12	No	4,650
610	Callery pear	13	No	3,050
611	Callery pear	14	No	2,750
612	Southern live oak	4	No	350
613	Southern live oak	9	No	2,100
614	Southern live oak	11	No	3,950
615	Southern live oak	10	No	2,550
616	Southern live oak	13	No	3,050
617	Southern live oak	13	No	4,250
618	Southern live oak	15	No	7,250
619	Southern live oak	13	No	5,500
620	Southern live oak	12	No	4,650
621	Southern live oak	13	No	5,500
622	Callery pear	9	No	850
623	Callery pear	14	Yes	3,500
624	Callery pear	13	No	2,350
625	Callery pear	15	No	3,150
626	Southern live oak	11	No	3,950

(Continued, following page)



**Table 5: Appraised value of trees recommended for removal, continued**

<b>Tree No.</b>	<b>Species</b>	<b>Trunk diameter (in.)</b>	<b>Heritage?</b>	<b>Appraised value (\$)</b>
627	Southern live oak	8	No	1,650
628	Southern live oak	12	No	4,650
629	Coast live oak	6	No	400
630	Southern live oak	11	No	3,050
631	Southern live oak	12	No	3,650
632	Southern live oak	12	No	3,650
633	Southern live oak	10	No	1,850
639	Southern live oak	11	No	3,050
640	Southern live oak	10	No	3,300
641	Southern live oak	11	No	3,950
642	Southern live oak	8	No	1,200
643	Southern live oak	9	No	2,100
644	Southern live oak	8	No	1,200
645	Southern live oak	10	No	1,850
646	Southern live oak	8	No	1,200
650	Southern live oak	7	No	900
651	Southern live oak	10	No	2,550
695	Callery pear	13	Yes	1,700
696	Callery pear	12	No	1,450
699	Southern live oak	11	No	3,050
700	Southern live oak	7	No	900
701	Southern live oak	10	No	3,300
702	Southern live oak	12	No	4,650
703	Southern live oak	11	No	3,050
704	Southern live oak	9	No	2,100
705	Southern live oak	9	No	2,100
706	Southern live oak	8	No	1,650
707	Southern live oak	13	No	4,250
723	Chinese tallow	13	No	3,300
724	Chinese tallow	10	No	2,000
725	Chinese tallow	8	No	900
726	Chinese tallow	9	No	1,650
727	Chinese tallow	11	No	2,400
728	Canary island pine	9	Yes	900
729	Albizia	6	No	300
730	Albizia	7	No	500
731	Albizia	7	No	500
732	Albizia	6	No	400
733	Canary island pine	14	Yes	2,950
734	Canary island pine	21	Yes	6,500
735	Canary island pine	19	Yes	5,350
736	Canary island pine	19	Yes	5,350
737	Canary island pine	18	Yes	3,450
738	Canary island pine	17	No	3,050
739	Canary island pine	19	Yes	5,350

(Continued, following page)

**Table 5: Appraised value of trees recommended for removal, continued**

<b>Tree No.</b>	<b>Species</b>	<b>Trunk diameter (in.)</b>	<b>Heritage?</b>	<b>Appraised value (\$)</b>
740	Canary island pine	18	Yes	3,450
741	Canary island pine	19	Yes	5,350
742	Canary island pine	15	No	2,400
743	Canary island pine	8	No	700
745	Canary island pine	10	No	1,100
746	Canary island pine	16	Yes	3,800
747	Canary island pine	14	No	2,950
748	Canary island pine	18	Yes	4,800
749	Canary island pine	24	Yes	8,500
750	Crab apple	6	No	550
751	Crab apple	8	No	1,350
752	Crab apple	7	No	1,050
753	Crab apple	7	No	750
754	Crab apple	7	No	1,050
755	Crab apple	6	No	800
756	Crab apple	6	No	800
757	Crab apple	7	No	1,050
758	Callery pear	11	Yes	1,700
759	Callery pear	9	No	850
760	Callery pear	10	No	1,450
761	Callery pear	9	No	1,150
762	Southern live oak	6	No	400
763	Southern live oak	7	No	900
764	Southern live oak	6	No	700
765	Callery pear	9	No	850
766	Callery pear	10	No	1,450
767	Callery pear	11	No	1,700
768	Callery pear	12	No	2,000
769	Southern live oak	8	No	2,100
770	Southern live oak	12	No	3,650
771	Southern live oak	11	No	3,950
772	Southern live oak	9	No	2,100
773	Southern live oak	8	No	1,200
774	Callery pear	13	No	2,350
775	Callery pear	12	No	2,000
776	Callery pear	14	No	1,950
777	Callery pear	13	No	1,700
778	Southern live oak	9	No	2,700
779	Southern live oak	10	No	1,850
780	Southern live oak	8	No	1,650
781	Callery pear	6	No	400
782	Callery pear	14	No	1,750
783	Callery pear	13	No	2,350
784	Callery pear	14	No	1,950
1024	Callery pear	11	No	1,700

(Continued, following page)

**Table 5: Appraised value of trees recommended for removal, continued**

<b>Tree No.</b>	<b>Species</b>	<b>Trunk diameter (in.)</b>	<b>Heritage?</b>	<b>Appraised value (\$)</b>
1025	Callery pear	10	No	1,450
1026	Southern live oak	11	No	3,050
1027	Southern live oak	9	No	1,500
1028	Southern live oak	14	No	3,500
1029	Southern live oak	12	No	3,650
1030	Callery pear	13	Yes	2,350
1031	Callery pear	12	Yes	2,000
1032	Callery pear	12	Yes	2,000
1033	Callery pear	12	Yes	2,000
1034	Callery pear	9	No	850
1035	Callery pear	13	Yes	2,350
1036	Callery pear	14	Yes	2,750
1037	Southern live oak	6	No	700
1038	Southern live oak	8	No	1,650
1039	Southern live oak	9	No	2,100
1040	Southern live oak	8	No	1,650
1041	Southern live oak	12	No	4,650
1042	Southern live oak	12	No	3,650
1043	Southern live oak	8	No	1,650
1044	Southern live oak	6	No	700
1045	Southern live oak	9	No	1,500
1046	Southern live oak	9	No	2,100
1047	Southern live oak	12	No	3,650
1048	Southern live oak	7	No	900
1049	Southern live oak	10	No	2,550
1050	Southern live oak	11	No	2,200
1051	Southern live oak	10	No	1,850
1052	Southern live oak	7	No	900
1053	Southern live oak	9	No	1,500
1054	Southern live oak	6	No	700
1055	Southern live oak	11	No	3,950
1056	Southern live oak	7	No	900
1058	Southern live oak	7	No	1,250
1059	Southern live oak	8	No	1,650
1060	Southern live oak	7	No	900
1061	Southern live oak	8	No	1,200
1062	Southern live oak	6	No	700
1063	Southern live oak	6	No	700
1064	Callery pear	14	No	2,750
1065	Callery pear	13	No	2,350
1070	Callery pear	13	No	2,350
1071	Callery pear	12	No	2,000
1072	Callery pear	14	No	2,750
1073	Callery pear	14	No	2,750
1074	Callery pear	12	No	2,000

(Continued, following page)

**Table 5: Appraised value of trees recommended for removal, continued**

<b>Tree No.</b>	<b>Species</b>	<b>Trunk diameter (in.)</b>	<b>Heritage?</b>	<b>Appraised value (\$)</b>
1075	Callery pear	12	No	2,000
1076	Callery pear	11	No	1,200
1077	Callery pear	6	No	400
1078	Callery pear	12	No	2,000
1079	Callery pear	14	No	2,750
1080	Callery pear	15	No	3,150
1081	Callery pear	15	No	3,150
1082	Callery pear	15	No	3,150
1087	Callery pear	14	No	2,750
1088	Callery pear	11	No	1,200
1089	Callery pear	15	No	3,150
1090	Callery pear	17	Yes	4,000
1091	Callery pear	12	No	2,000
1092	Callery pear	9	No	850
1093	Callery pear	16	Yes	3,550
1094	Callery pear	16	Yes	3,550
1095	Callery pear	13	No	2,350
1096	Callery pear	14	No	2,750
1097	Callery pear	17	Yes	4,000
1103	Callery pear	15	No	2,250
1104	Callery pear	13	No	1,700
1105	Callery pear	5	No	300
1106	Callery pear	6	No	400
1107	Callery pear	5	No	300
1108	Callery pear	7	No	500
1109	Callery pear	5	No	300
1110	Callery pear	5	No	300
1111	Callery pear	6	No	400
1112	Callery pear	8	No	650
1113	Callery pear	8	No	650
1115	Evergreen ash	8	No	400
1116	Evergreen ash	13	No	1,000
1117	Evergreen ash	8	No	400
1118	Evergreen ash	7	No	300
1119	Evergreen ash	11	No	1,000
<b>Total</b>				<b>656,450</b>

# Tree Assessment

California Center  
Pleasanton, California  
January, February & August 2012



TREE No.	SPECIES	SIZE DIAMETER (in inches)	HERITAGE?	CONDITION 1=POOR 5=EXCELLENT	SUITABILITY FOR PRESERVATION	COMMENTS
5	Chinese tallow	10	No	3	Moderate	One-sided; small laterals west; minor dead wood.
6	Chinese tallow	11	No	4	Good	Upright form; minor dead wood.
7	Chinese tallow	10	No	4	Moderate	Fair structure; minor dead wood.
8	Chinese tallow	10	No	4	Good	Upright form; minor dead wood.
9	Chinese tallow	12	No	4	Good	Surface roots; minor dead wood.
10	Chinese tallow	10	No	4	Moderate	Narrow crown; minor dead wood.
11	Chinese tallow	8	No	4	Moderate	Leans north; surface root; trunk wounds.
12	Chinese tallow	11	No	4	Moderate	One-sided north; branch failure.
13	Chinese tallow	12	No	4	Moderate	One-sided east; minor dead wood; codominant trunks at 6'.
14	Chinese tallow	10	No	4	Moderate	Good form and structure; minor dead wood; root damage.
15	Chinese tallow	12	No	3	Poor	One-sided west; trunk wound; dead wood from failed stem.
16	Chinese tallow	13	No	4	Good	Good form and structure; surface roots.
17	Blackwood acacia	24	Yes	3	Poor	Codominant trunks at 7'; poor branch structure.
18	Blackwood acacia	23	Yes	3	Poor	Multiple attachments at 7'; leans east; weak attachments;
19	Blackwood acacia	20	Yes	3	Poor	Codominant trunks at 7'; poor branch structure.
20	Blackwood acacia	14	Yes	3	Moderate	Multiple attachments at 10'; upright form.
21	Blackwood acacia	16	Yes	4	Moderate	Upright form.
24	Blackwood acacia	21	Yes	3	Poor	Trunk wound at 10'; history of branch failure; leans east.
25	Blackwood acacia	19	Yes	2	Poor	Codominant trunks at 7'; weak attachments; leans east.
26	Blackwood acacia	19	Yes	4	Moderate	Multiple attachments at 10'; upright form.
31	Callery pear	12	No	4	Good	Multiple attachments at 7'; small laterals; good form.
32	Callery pear	12	No	4	Good	Multiple attachments at 8'; slight lean east.
33	Callery pear	14	Yes	4	Moderate	Multiple attachments at 8'; one-sided north; small laterals.
34	Callery pear	12	No	4	Moderate	Multiple attachments at 8'; one-sided southeast.
35	Callery pear	11	No	3	Moderate	Multiple attachments at 7'; lack of basal flare.
36	Callery pear	12	Yes	4	Good	Multiple attachments at 7'; good form and structure.
37	Callery pear	11	No	4	Good	Multiple attachments at 7'; good form and structure.
38	Callery pear	8	No	3	Moderate	Multiple attachments at 8'; one-sided south.
39	Callery pear	10	No	4	Good	Multiple attachments at 7'; good form.
40	Callery pear	10	No	4	Moderate	Multiple attachments at 7'; good form; fire blight.
41	Southern live oak	6	No	2	Poor	In small island; poor color; thin crown.

# Tree Assessment

California Center  
Pleasanton, California  
January, February & August 2012



TREE No.	SPECIES	SIZE DIAMETER (in inches)	HERITAGE?	CONDITION 1=POOR 5=EXCELLENT	SUITABILITY FOR PRESERVATION	COMMENTS
42	Southern live oak	5	No	1	Poor	Thin crown; dying.
43	Southern live oak	5	No	1	Poor	Dying.
44	Southern live oak	5	No	1	Poor	Dying.
45	Southern live oak	5	No	3	Moderate	Thin crown; twig dieback.
46	Southern live oak	8	No	4	Moderate	Good form and structure; thin crown.
47	Southern live oak	6	No	2	Poor	Thin crown; poor color; twig and branch dieback.
48	Southern live oak	5	No	1	Poor	Thin crown; extensive twig dieback; poor color.
49	Southern live oak	5	No	2	Poor	Thin crown; poor color.
50	Southern live oak	6	No	5	Good	Good young tree.
51	Southern live oak	7	No	4	Good	Multiple attachments at 6'; fair structure.
52	Southern live oak	9	No	5	Good	Good form and structure.
53	Southern live oak	11	No	4	Moderate	Good form and structure; thin in upper crown.
54	Southern live oak	12	No	4	Good	Good form and structure; thin in upper crown; displacing infrastructure 3".
55	Southern live oak	11	No	5	Good	Good form and structure.
56	Southern live oak	8	No	4	Moderate	Twig dieback; planted high.
57	Southern live oak	9	No	5	Good	Good form and structure.
58	Southern live oak	8	No	4	Good	Trunk wound; slightly thin crown.
59	Southern live oak	8	No	4	Moderate	Slightly thin crown; seam in attachment.
60	Southern live oak	8	No	4	Moderate	Fair structure; thinning crown; root suckers.
61	Southern live oak	11	No	4	Moderate	Good form; fair structure.
62	Southern live oak	7	No	4	Good	Good form; fair structure.
63	Southern live oak	8	No	5	Good	Good form and structure; root suckers.
64	Southern live oak	6	No	5	Good	Good young tree; dieback in upper crown.
65	Southern live oak	7	No	4	Good	Good young tree; crook at 5'.
66	Southern live oak	5	No	2	Poor	Poor color; twig dieback; crooks.
67	Southern live oak	7	No	2	Poor	Poor color; twig dieback; thin crown.
68	Southern live oak	10	No	5	Good	Good form and structure; poor color.
69	Southern live oak	10	No	5	Good	Codominant trunks at 6'; good form.
70	Southern live oak	9	No	3	Moderate	Thinning crown; root suckers.
71	Southern live oak	8	No	5	Good	Good form and structure.

# Tree Assessment

California Center  
Pleasanton, California  
January, February & August 2012



TREE No.	SPECIES	SIZE DIAMETER (in inches)	HERITAGE?	CONDITION 1=POOR 5=EXCELLENT	SUITABILITY FOR PRESERVATION	COMMENTS
72	Southern live oak	14	No	5	Good	Good form and structure.
73	Southern live oak	11	No	5	Good	Good form and structure; minor twig dieback.
74	Southern live oak	11	No	5	Good	Good form and structure.
75	Southern live oak	10	No	4	Moderate	Good form and structure; thinning crown.
76	Southern live oak	11	No	4	Moderate	Trunk wound; embedded stake tie.
77	Southern live oak	9	No	3	Moderate	Twig dieback; pruned on west side for light.
78	Southern live oak	10	No	4	Moderate	Good form and structure; twig dieback.
79	Callery pear	15	Yes	4	Good	Codominant trunks at 8'; fair structure; displacing curb 1".
80	Callery pear	6	No	3	Moderate	Suppressed form; small crown.
85	Callery pear	16	No	4	Good	Multiple attachments at 10'; slight lean south; broken branches.
86	Callery pear	16	No	4	Good	Multiple attachments at 10'; slight lean south.
87	Callery pear	13	No	5	Good	Multiple attachments at 8'; good form and structure.
139	White alder	14	No	4	Good	Slight crook at 7'; slight lean north.; good form and structure.
142	White alder	18	Yes	4	Moderate	Corrected lean north; good form and structure; possible armillaria.
473	Callery pear	10	No	4	Moderate	Multiple attachments at 8'; fair structure.
474	Callery pear	8	No	3	Moderate	Multiple attachments at 8'; twig dieback.
475	Callery pear	14	Yes	4	Good	Multiple attachments at 9'; good form and structure.
476	Callery pear	8	No	3	Moderate	Small crown; poor color.
477	Callery pear	13	No	4	Good	Codominant trunks at 7'; wide attachment.
478	Callery pear	13	No	4	Moderate	Multiple attachments at 8'; fair structure.
479	Callery pear	12	No	4	Moderate	Multiple attachments at 8'; crossing branches; pruned on south side for light.
480	Callery pear	10	No	4	Good	Multiple attachments at 8'; minor twig dieback.
481	Callery pear	12	No	4	Good	Multiple attachments at 8'; good form and structure.
482	Southern live oak	7	No	4	Moderate	Slightly thin crown.
483	Southern live oak	7	No	4	Moderate	Trunk bowed; good young tree; slightly thin crown; leaf tips browning.
484	Southern live oak	7	No	4	Good	Small leaves; good young tree; slightly thin upper crown.
485	Callery pear	11	No	4	Good	Codominant trunks at 8'; lateral south.

# Tree Assessment

California Center  
Pleasanton, California  
January, February & August 2012



TREE No.	SPECIES	SIZE DIAMETER (in inches)	HERITAGE?	CONDITION 1=POOR 5=EXCELLENT	SUITABILITY FOR PRESERVATION	COMMENTS
486	Callery pear	8	No	4	Good	Codominant trunks at 8'; narrow crown.
487	Callery pear	9	No	5	Good	Good young tree.
488	Callery pear	9	No	4	Good	Multiple attachments at 8'; minor twig dieback.
489	Callery pear	9	No	4	Good	Codominant trunks at 8'; slight lean east.
490	Callery pear	10	No	4	Good	Multiple attachments at 8'; good form and structure.
491	Callery pear	9	No	3	Poor	Multiple attachments at 8'; thin crown.
492	Callery pear	11	No	3	Moderate	Multiple attachments at 8'; thinning crown.
493	Callery pear	9	No	3	Moderate	Multiple attachments at 8'; thinning crown.
494	Callery pear	9	No	4	Good	Multiple attachments at 8'; good form and structure.
495	Southern live oak	5	No	3	Poor	Thin crown; poor color.
496	Southern live oak	6	No	3	Moderate	Thinning crown; poor color.
497	Southern live oak	8	No	3	Moderate	Thinning crown; poor color.
498	Southern live oak	7	No	5	Good	Good young tree.
499	Callery pear	15	Yes	4	Good	Multiple attachments at 8'; mistletoe; history of branch failure.
500	Callery pear	8	No	3	Poor	Multiple attachments at 8'; dieback.
501	Callery pear	13	No	4	Moderate	Multiple attachments at 8'; fair structure.
502	Callery pear	13	No	4	Good	Multiple attachments at 8'; good form and structure.
503	Callery pear	13	No	4	Good	Multiple attachments at 7'; good form and structure.
504	Callery pear	11	No	3	Moderate	Multiple attachments at 5'; thinning crown; one-sided to north; pruned for light.
505	Callery pear	11	No	4	Moderate	Multiple attachments at 7'; fair structure.
506	Callery pear	11	No	4	Good	Multiple attachments at 7'; upright form.
507	Southern live oak	6	No	3	Moderate	Thin crown; poor color.
508	Southern live oak	6	No	4	Moderate	Thin crown.
509	Southern live oak	7	No	3	Moderate	Thin crown; poor color; epicormic shoots.
510	Southern live oak	5	No	3	Moderate	Small, thin crown; poor color.
511	Callery pear	9	No	4	Good	Multiple attachments at 7'; good young tree.
512	Callery pear	7	No	3	Moderate	Small, thin crown.
513	Callery pear	7	No	2	Poor	Small crown; poor form and structure.
514	Callery pear	8	No	3	Moderate	Codominant trunks at 6' fair structure.
515	Southern live oak	6	No	3	Moderate	Thin crown; poor color.



# Tree Assessment

California Center  
Pleasanton, California  
January, February & August 2012



TREE No.	SPECIES	SIZE DIAMETER (in inches)	HERITAGE?	CONDITION 1=POOR 5=EXCELLENT	SUITABILITY FOR PRESERVATION	COMMENTS
516	Callery pear	8	No	3	Poor	Multiple attachments at 7'; trunk wound.
517	Southern live oak	5	No	2	Poor	Twig and branch dieback; poor color.
518	Southern live oak	5	No	2	Poor	Twig and branch dieback; poor color.
519	Callery pear	8	No	4	Moderate	Multiple attachments at 7'; thinning crown .
520	Callery pear	8	No	3	Poor	Multiple attachments at 7'; dieback in upper crown.
521	Callery pear	8	No	3	Poor	Multiple attachments at 7'; dieback in upper crown.
522	Callery pear	8	No	4	Moderate	Multiple attachments at 7'; thinning crown .
523	Southern live oak	6	No	4	Moderate	Slightly thin crown.
524	Southern live oak	13	No	5	Good	Excellent form and structure.
525	Southern live oak	8	No	4	Moderate	Slightly thin crown.
526	Callery pear	11	No	4	Moderate	Multiple attachments at 8'; thin crown.
527	Callery pear	11	No	4	Moderate	Multiple attachments at 8'; poor branch structure.
528	Callery pear	14	No	4	Good	Multiple attachments at 8'; good form and structure.
529	Callery pear	14	Yes	4	Moderate	Multiple attachments at 8'; upright form; one-sided to east.
530	Callery pear	12	Yes	4	Good	Multiple attachments at 8'; upright form.
531	Callery pear	13	No	4	Moderate	Multiple attachments at 8'; fair structure.
532	Callery pear	13	Yes	4	Good	Multiple attachments at 8'; good form and structure.
533	Callery pear	13	No	4	Good	Multiple attachments at 7'; good form and structure.
534	Callery pear	11	No	4	Moderate	Multiple attachments at 7'; narrow attachments.
535	Callery pear	10	No	2	Poor	Multiple attachments at 7'; dieback.
536	Callery pear	10	No	4	Good	Multiple attachments at 7'; good form and structure.
537	Callery pear	10	No	4	Good	Multiple attachments at 8'; one-sided north.
538	Callery pear	10	No	4	Moderate	Multiple attachments at 8'; one-sided south; twig dieback.
539	Callery pear	10	No	4	Moderate	Multiple attachments at 8'; one-sided east.
540	Callery pear	10	No	4	Moderate	Multiple attachments at 8'; thinniny crown.
541	Callery pear	10	No	4	Good	Multiple attachments at 8'; good form and structure.
542	Callery pear	12	No	4	Moderate	Multiple attachments at 7'; twig dieback.
543	Callery pear	11	No	3	Moderate	Multiple attachments at 7'; dieback in upper crown.
544	Callery pear	10	No	4	Moderate	Multiple attachments at 7'; branch wound.
545	Callery pear	10	No	4	Moderate	Codominant trunks at 7'; lateral west.
546	Callery pear	7	No	3	Moderate	Leans east; codominant trunks at 8'.

# Tree Assessment

California Center  
Pleasanton, California  
January, February & August 2012



TREE No.	SPECIES	SIZE DIAMETER (in inches)	HERITAGE?	CONDITION 1=POOR 5=EXCELLENT	SUITABILITY FOR PRESERVATION	COMMENTS
547	Callery pear	16	Yes	4	Good	Multiple attachments at 8'; good form and structure.
548	Callery pear	16	Yes	4	Good	Multiple attachments at 8'.
551	Red river gum	15	Yes	4	Good	Crowded; upright form.
552	Red river gum	12	Yes	3	Moderate	Crowded; suppressed form; leans to east.
553	Red river gum	13	Yes	4	Moderate	Multiple attachments at 8'; narrow crown.
554	Red river gum	18	Yes	3	Poor	Codominant trunks at 8'; poor form and structure.
555	Red river gum	19	Yes	3	Moderate	Multiple attachments at 8'; crown bowed north
556	Red river gum	27	Yes	4	Good	Codominant trunks at 8'; included bark; dominant tree.
557	Red river gum	16	Yes	3	Moderate	Poor form and structure; girdling root; leans east
558	Red river gum	13	Yes	3	Poor	Multiple attachments at 8'.
559	Red iron bark	10	Yes	3	Poor	Trunk bowed to west.
560	Red river gum	13	Yes	3	Moderate	Multiple attachments at 8'; twig and branch dieback.
561	Red river gum	13	Yes	3	Moderate	Multiple attachments at 8'; asymmetric crown; twig and branch dieback.
562	Red river gum	18	Yes	3	Poor	Upright form; dominant tree; slightly thin crown; major trunk wound.
563	Red river gum	16	Yes	2	Poor	Extensive dieback.
564	Red iron bark	18	Yes	3	Moderate	West stem broke at codominant attachment; poor structure.
565	Red river gum	9	No	1	Poor	All but dead.
566	Red river gum	17	Yes	2	Poor	Extensive dieback; bark checking.
567	Red river gum	18	Yes	3	Poor	Codominant trunks at 7'; asymmetric crown; dieback.
568	Red river gum	34	Yes	3	Moderate	Multiple attachments at 10'; twig and branch dieback.
569	Canary island pine	13	Yes	4	Good	Upright form; basal wounds.
570	Canary island pine	18	Yes	4	Good	Good form and structure.
571	Canary island pine	19	Yes	5	Good	Good form and structure.
572	Canary island pine	19	Yes	5	Good	Good form and structure.
573	Canary island pine	19	Yes	5	Good	Good form and structure.
574	Canary island pine	25	Yes	5	Good	Good form and structure.
575	Evergreen ash	24	Yes	4	Good	Multiple attachments at 8'; included bark.
576	Evergreen ash	21	Yes	4	Good	Multiple attachments at 8'; one-sided south.
577	Canary island pine	17	Yes	3	Moderate	Dead top; thin crown.

# Tree Assessment

California Center  
Pleasanton, California  
January, February & August 2012



TREE No.	SPECIES	SIZE DIAMETER (in inches)	HERITAGE?	CONDITION 1=POOR 5=EXCELLENT	SUITABILITY FOR PRESERVATION	COMMENTS
578	Canary island pine	16	Yes	3	Moderate	Minor browning out at top.
579	Canary island pine	19	Yes	3	Moderate	Browning out at top.
580	Canary island pine	16	Yes	3	Poor	Browning out at top.
581	Canary island pine	17	Yes	3	Moderate	Slight lean east; surface roots west.
582	Canary island pine	18	Yes	4	Good	Good form and structure; slightly thin crown.
583	Canary island pine	14	Yes	2	Poor	Declining.
584	Canary island pine	16	No	3	Moderate	Multiple attachments at top; lost sentral leader; slightly light color.
585	Canary island pine	15	Yes	3	Poor	Multiple attachments at top; poor color; declining.
586	Canary island pine	12	No	2	Poor	Declining.
587	Canary island pine	7	No	1	Poor	Declining.
588	Canary island pine	16	Yes	4	Moderate	Upright form; large girdling roots; slightly poor color; thinning
589	Canary island pine	21	Yes	5	Good	Good form and structure; slightly poor color.
590	Canary island pine	14	No	3	Moderate	Multiple attachments at top; crook at 10'.
591	Crab apple	9	No	4	Good	Leans north; good young tree; multiple attachments at 5'.
592	Crab apple	6	No	4	Good	Basal wound; good young tree.
593	Crab apple	9	No	4	Good	Leans north; good young tree; lost lateral limb.
594	Crab apple	8	No	4	Moderate	Good young tree; basal wound.
595	Crab apple	7	No	4	Good	Good young tree; multiple attachments at 5'; basal wound.
596	Crab apple	6	No	4	Good	Good young tree; basal wound; lost lateral limb.
597	Callery pear	14	Yes	5	Good	Multiple attachments at 8'; spreading form; fire blight.
598	Callery pear	11	No	3	Moderate	Multiple attachments at 8'; one-sided south; fire blight.
599	Callery pear	11	No	5	Good	Multiple attachments at 8'; upright form; fire blight.
600	Callery pear	10	No	4	Moderate	Multiple attachments at 8'; one-sided east; fire blight.
601	Southern live oak	14	No	4	Good	Slightly thin crown; good form and structure; curb replaced.
602	Southern live oak	14	No	5	Good	Good form and structure.
603	Southern live oak	10	No	4	Good	Slightly thin crown; good form and structure.
604	Southern live oak	6	No	4	Good	Small crown; good form and structure; slightly thin crown.
605	Southern live oak	9	No	5	Good	Good form and structure; thin crown at top.
606	Southern live oak	9	No	5	Good	Good form and structure; slightly thin crown.

# Tree Assessment

California Center  
Pleasanton, California  
January, February & August 2012



TREE No.	SPECIES	SIZE DIAMETER (in inches)	HERITAGE?	CONDITION 1=POOR 5=EXCELLENT	SUITABILITY FOR PRESERVATION	COMMENTS
607	Southern live oak	13	No	5	Good	Codominant trunks at 6'; good form and structure; broken curb.
608	Southern live oak	10	No	4	Good	Slightly thin crown; good form and structure.
609	Southern live oak	12	No	5	Good	Good form and structure; broken curb; displacing infrastructure 2".
610	Callery pear	13	No	5	Good	Multiple attachments at 8'; good form and structure.
611	Callery pear	14	No	4	Good	Multiple attachments at 8'; narrow attachment.
612	Southern live oak	4	No	3	Poor	Small crown; poor color.
613	Southern live oak	9	No	4	Moderate	Twig dieback; slightly thin crown; leaf tips browning.
614	Southern live oak	11	No	5	Good	Good form and structure; multiple attachments at 6'.
615	Southern live oak	10	No	4	Good	Minor twig dieback; slightly thin crown.
616	Southern live oak	13	No	3	Moderate	Twig dieback; thin crown; pruned for light.
617	Southern live oak	13	No	4	Moderate	Twig dieback; thinning crown.
618	Southern live oak	15	No	5	Good	Good form and structure; slightly thin crown at top; displacing infrastructure 2".
619	Southern live oak	13	No	5	Good	Good form and structure; slightly thin crown; curb replaced.
620	Southern live oak	12	No	5	Good	Good form and structure; slightly thin crown.
621	Southern live oak	13	No	5	Good	Good form and structure; slightly thin crown; broken curb.
622	Callery pear	9	No	3	Moderate	Codominant trunks at 8'; basal wound; twig dieback; fire blight.
623	Callery pear	14	Yes	5	Good	Multiple attachments at 8'; good form and structure.
624	Callery pear	13	No	4	Good	Multiple attachments at 8'; branch wounds; history of branch failure; fire blight.
625	Callery pear	15	No	4	Good	Multiple attachments at 8'; branch wounds; history of branch failure; fire blight.
626	Southern live oak	11	No	5	Good	Good form and structure; slightly thin crown; displacing infrastructure 3".
627	Southern live oak	8	No	4	Moderate	Small crown; trunk wound; slightly thin crown.
628	Southern live oak	12	No	5	Good	Good form and structure.
629	Coast live oak	6	No	3	Moderate	Trunk wound from sun scald; small crown; multiple attachments at 6'.
630	Southern live oak	11	No	4	Moderate	Slightly thin crown; curb replaced.

# Tree Assessment

California Center  
Pleasanton, California  
January, February & August 2012



TREE No.	SPECIES	SIZE DIAMETER (in inches)	HERITAGE?	CONDITION 1=POOR 5=EXCELLENT	SUITABILITY FOR PRESERVATION	COMMENTS
631	Southern live oak	12	No	4	Moderate	Slightly thin crown; curb replaced.
632	Southern live oak	12	No	4	Good	Slightly thin crown.
633	Southern live oak	10	No	3	Moderate	Thin crown; poor color.
634	Callery pear	12	No	4	Moderate	Multiple attachments at 8'; narrow attachments.
635	Callery pear	12	No	3	Moderate	Multiple attachments at 8'; poor branch structure.
636	Callery pear	12	No	3	Moderate	Multiple attachments at 8'; poor branch structure.
637	Callery pear	12	No	4	Moderate	Multiple attachments at 8'; laterals; surface roots.
638	Callery pear	15	No	4	Good	Multiple attachments at 8'; fair structure.
639	Southern live oak	11	No	4	Moderate	Slightly thin crown; curb replaced.
640	Southern live oak	10	No	5	Good	Good form and structure.
641	Southern live oak	11	No	5	Good	Good form and structure; slightly thin crown.
642	Southern live oak	8	No	3	Moderate	Thin crown; girdling root.
643	Southern live oak	9	No	4	Good	Good young tree; one-sided east.
644	Southern live oak	8	No	3	Moderate	Poor structure; dieback.
645	Southern live oak	10	No	3	Moderate	Good form and structure; dieback; slightly thin crown.
646	Southern live oak	8	No	3	Poor	Thin crown.
647	Southern live oak	6	No	2	Poor	Very thin crown; severe twig dieback.
648	Southern live oak	9	No	3	Moderate	Thin crown; dieback.
649	Southern live oak	10	No	4	Moderate	Good form and structure; thin crown.
650	Southern live oak	7	No	3	Poor	Thin crown; poor color.
651	Southern live oak	10	No	4	Good	Good form and structure; slightly thin crown.
652	Chinese tallow	13	No	3	Moderate	Corrected lean north; asymmetric crown; dead wood to 2" diameter.
653	Chinese tallow	11	No	3	Moderate	Good form and structure; trunk wounds; dead wood.
654	Chinese tallow	9	No	4	Good	Good form and structure; basal wounds.
655	Chinese tallow	9	No	3	Moderate	Leans east; root wounds.
656	Chinese tallow	13	No	4	Good	Good form and structure; one-sided to west.
695	Callery pear	13	Yes	3	Moderate	Multiple attachments at 10'; one-sided north.
696	Callery pear	12	No	3	Poor	Multiple attachments at 10'; large trunk wound.
697	Southern live oak	11	No	4	Good	Good form and structure; new curb.
699	Southern live oak	11	No	4	Good	Good form and structure; large surface root.

# Tree Assessment

California Center  
Pleasanton, California  
January, February & August 2012



TREE No.	SPECIES	SIZE DIAMETER (in inches)	HERITAGE?	CONDITION 1=POOR 5=EXCELLENT	SUITABILITY FOR PRESERVATION	COMMENTS
700	Southern live oak	7	No	3	Poor	Leans east; large trunk wound/sun scald.
701	Southern live oak	10	No	5	Good	Good form and structure.
702	Southern live oak	12	No	5	Good	Good form and structure.
703	Southern live oak	11	No	4	Moderate	Curb replaced, root loss to be determined.
704	Southern live oak	9	No	4	Moderate	Good form and structure; curb replaced, root loss to be determined.
705	Southern live oak	9	No	4	Moderate	Multiple attachments at 6'; fair structure.
706	Southern live oak	8	No	4	Moderate	Multiple attachments at 6'; fair structure; twig dieback; thin crown.
707	Southern live oak	13	No	4	Good	Multiple attachments at 6'; good form; curb replaced.
713	Chinese tallow	10	No	3	Moderate	One sided west; moderate dead wood.
714	Chinese tallow	10	No	4	Moderate	Upright form; moderate dead wood.
715	Chinese tallow	12	No	4	Moderate	Upright form; a little one sided south; root woundsouth
716	Chinese tallow	13	No	4	Good	Upright form; one sided west; root wounds.
717	Chinese tallow	15	No	4	Good	Good form and structure; one sided west; dead wood.
718	Chinese tallow	9	No	3	Moderate	Upright form; moderate dead wood; no basal flare east
719	Chinese tallow	11	No	4	Moderate	Upright form; latetal; basal wound.
720	Chinese tallow	11	No	3	Moderate	Upright form; basal wounds west; epicotmics.
721	Chinese tallow	8	No	3	Moderate	Corrected lean; trunk wound; minor dead wood
722	Chinese tallow	11	No	4	Good	Upright form; good structure; epicormics.
723	Chinese tallow	13	No	4	Good	Slight lean east; good structure; small trunk wound east
724	Chinese tallow	10	No	4	Good	Codominant trunks at 7'; good structure.
725	Chinese tallow	8	No	3	Moderate	Slight lean east; one sided south; trunk wound east
726	Chinese tallow	9	No	4	Moderate	Laterals south; broken branchesouth
727	Chinese tallow	11	No	4	Good	Codominant trunks at 7'; good form and structure.
728	Canary island pine	9	Yes	3	Moderate	Slight sweep from base; thin crown.
729	Albizia	6	No	3	Moderate	Leans northwest; trunk wounds.
730	Albizia	7	No	4	Moderate	Upright form; trunk wounds.
731	Albizia	7	No	4	Good	Upright form.
732	Albizia	6	No	4	Good	Upright form; root wounds.
733	Canary island pine	14	Yes	4	Good	Upright form; good structure.

# Tree Assessment

California Center  
Pleasanton, California  
January, February & August 2012



TREE No.	SPECIES	SIZE DIAMETER (in inches)	HERITAGE?	CONDITION 1=POOR 5=EXCELLENT	SUITABILITY FOR PRESERVATION	COMMENTS
734	Canary island pine	21	Yes	4	Moderate	Codominant trunks at 20'; included bark.
735	Canary island pine	19	Yes	4	Good	One sided east; lateral turned up.
736	Canary island pine	19	Yes	4	Good	One sided east
737	Canary island pine	18	Yes	3	Moderate	Multiple attachments at 6'; fair structure.
738	Canary island pine	17	No	3	Moderate	Leans east; poor color.
739	Canary island pine	19	Yes	4	Good	Upright form; good structure; twig dieback
740	Canary island pine	18	Yes	3	Moderate	Twig and branch dieback; poor color.
741	Canary island pine	19	Yes	4	Moderate	Upright form; good structure; dieback in upper crown.
742	Canary island pine	15	No	3	Moderate	Thin crown; dieback.
743	Canary island pine	8	No	3	Moderate	Upright form; thin crown; dieback.
744	Evergreen ash	14	No	4	Moderate	Multiple attachments at 8'; leans north
745	Canary island pine	10	No	3	Moderate	Upright form; dead top.
746	Canary island pine	16	Yes	4	Good	Upright form; some drooping branches.
747	Canary island pine	14	No	4	Moderate	Slight lean north; poor color.
748	Canary island pine	18	Yes	4	Good	Upright; good form and structure.
749	Canary island pine	24	Yes	4	Moderate	Multiple attachments at 12'; full crown; fair structure.
750	Crab apple	6	No	3	Poor	Leans north; basal wounding.
751	Crab apple	8	No	4	Good	Good young tree; basal wounding.
752	Crab apple	7	No	4	Moderate	Asymmetric form; basal wounding.
753	Crab apple	7	No	3	Moderate	Leans north
754	Crab apple	7	No	4	Moderate	Slight lean north; trunk wound.
755	Crab apple	6	No	4	Good	Good young tree.
756	Crab apple	6	No	4	Moderate	Good young tree; basal wounds.
757	Crab apple	7	No	4	Moderate	Good young tree; basal wounds; growth cracks.
758	Callery pear	11	Yes	4	Moderate	Multiple attachments at 8'; pruned away from light south
759	Callery pear	9	No	3	Moderate	Multiple attachments at 7'; narrow attachments; topped at 15'.
760	Callery pear	10	No	4	Good	Multiple attachments at 8'; good form and structure.
761	Callery pear	9	No	4	Good	Multiple attachments at 8'; upright form.
762	Southern live oak	6	No	2	Poor	Small, thin crown.
763	Southern live oak	7	No	3	Poor	Thin crown; crook at 5'.

# Tree Assessment

California Center  
Pleasanton, California  
January, February & August 2012



TREE No.	SPECIES	SIZE DIAMETER (in inches)	HERITAGE?	CONDITION 1=POOR 5=EXCELLENT	SUITABILITY FOR PRESERVATION	COMMENTS
764	Southern live oak	6	No	3	Moderate	Thin crown; good form.
765	Callery pear	9	No	3	Moderate	Multiple attachments at 8'; narrow attachments; 3" branch to east cracked at attachment.
766	Callery pear	10	No	4	Moderate	Multiple attachments at 8'; upright form; trunk flat north
767	Callery pear	11	No	4	Good	Multiple attachments at 8'; upright form; epicormics.
768	Callery pear	12	No	4	Moderate	Multiple attachments at 8'; one sided north; pruned away from light.
769	Southern live oak	8	No	5	Good	A little thin crown; good form and structure.
770	Southern live oak	12	No	4	Good	Good form; fair structure.
771	Southern live oak	11	No	5	Good	Good form and structure.
772	Southern live oak	9	No	4	Good	Multiple attachments at 6'; good form and structure.
773	Southern live oak	8	No	3	Moderate	Thin crown.
774	Callery pear	13	No	4	Good	Multiple attachments at 7'; good form and structure.
775	Callery pear	12	No	4	Good	Multiple attachments at 7'; good form and structure.
776	Callery pear	14	No	3	Moderate	Multiple attachments at 7'; one-sided to south; pruned for light standard.
777	Callery pear	13	No	3	Moderate	Multiple attachments at 7'; one-sided to north; pruned for light standard.
778	Southern live oak	9	No	5	Good	Dense crown; excellent form and structure.
779	Southern live oak	10	No	3	Moderate	Codominant at 5' with narrow attachment; full crown.
780	Southern live oak	8	No	4	Good	Multiple attachments at 7'; good form and structure.
781	Callery pear	6	No	3	Moderate	Multiple attachments at 7'.
782	Callery pear	14	No	4	Good	Multiple attachments at 7'.
783	Callery pear	13	No	4	Moderate	Multiple attachments at 8'.
784	Callery pear	14	No	3	Moderate	Multiple attachments at 7'; narrow attachments.
785	Southern live oak	8	No	5	Good	Excellent form and structure.
1009	Red river gum	9	Yes	2	Poor	Extensive dieback; basal wounds.
1010	Red river gum	14	Yes	3	Poor	Lateral east; dieback; basal wounds.
1011	Red river gum	17	Yes	3	Poor	Multiple attachments at 10'; twig and branch dieback.
1012	Red iron bark	14	Yes	3	Moderate	Codominant trunks at 7'; one sided west.



# Tree Assessment

California Center  
Pleasanton, California  
January, February & August 2012



TREE No.	SPECIES	SIZE DIAMETER (in inches)	HERITAGE?	CONDITION 1=POOR 5=EXCELLENT	SUITABILITY FOR PRESERVATION	COMMENTS
1013	Red river gum	15	Yes	3	Moderate	Codominant trunks at 10'; narrow crown; twig and branch dieback.
1014	Red river gum	18	Yes	3	Moderate	Multiple attachments at 15'; narrow crown; twig dieback.
1015	Red river gum	23	Yes	3	Moderate	Multiple attachments at 12'; twig dieback.
1016	Red river gum	9	No	2	Poor	Trunk wound from ground to attachment; twig dieback.
1017	Red river gum	13	Yes	2	Poor	Codominant trunks at 8'; twig and branch dieback.
1018	Red river gum	13	Yes	3	Moderate	Codominant trunks at 8'; one sided east; twig dieback.
1019	Red river gum	26	Yes	4	Moderate	Codominant trunks at 15'; full crown; twig dieback.
1020	Red river gum	16	Yes	3	Poor	Codominant trunks at 8'; narrow crown; twig dieback.
1021	Red river gum	17	Yes	3	Moderate	Narrow crown; basal wound north; twig dieback.
1022	Red river gum	12	Yes	1	Poor	Extensive trunk wounds and dieback.
1023	Red river gum	16	Yes	3	Moderate	Narrow crown; slight lean east; twig dieback.
1024	Callery pear	11	No	4	Moderate	Multiple attachments at 8'; upright form; good form and structure.
1025	Callery pear	10	No	4	Moderate	Multiple attachments at 7'; upright form; narrow attachment.
1026	Southern live oak	11	No	4	Good	Multiple attachments at 8'; slightly drought stressed; good form.
1027	Southern live oak	9	No	3	Moderate	Multiple attachments at 8'; small crown; slightly drought
1028	Southern live oak	14	No	3	Moderate	Slightly thin crown; minor twig dieback; slightly drought stressed.
1029	Southern live oak	12	No	4	Moderate	Coodominant at 7'; thin crown at top; twig dieback.
1030	Callery pear	13	Yes	4	Moderate	Multiple attachments at 8'; upright form.
1031	Callery pear	12	Yes	4	Moderate	Multiple attachments at 8'; upright form.
1032	Callery pear	12	Yes	4	Moderate	Multiple attachments at 8'; upright form.
1033	Callery pear	12	Yes	4	Moderate	Multiple attachments at 8'; upright form; pruned for light.
1034	Callery pear	9	No	3	Moderate	Codominant at 8'; upright form.
1035	Callery pear	13	Yes	4	Moderate	Multiple attachments at 8'; good form and structure.
1036	Callery pear	14	Yes	4	Moderate	Multiple attachments at 8'; good form and structure.
1037	Southern live oak	6	No	3	Poor	Multiple attachments at 7'; small thin crown; poor color.

# Tree Assessment

California Center  
Pleasanton, California  
January, February & August 2012



TREE No.	SPECIES	SIZE DIAMETER (in inches)	HERITAGE?	CONDITION 1=POOR 5=EXCELLENT	SUITABILITY FOR PRESERVATION	COMMENTS
1038	Southern live oak	8	No	4	Moderate	Multiple attachments at 7'; good form; slightly thin crown.
1039	Southern live oak	9	No	4	Moderate	Multiple attachments at 7'; good form; slightly thin crown.
1040	Southern live oak	8	No	4	Moderate	Multiple attachments at 7'; good form; thinning crown.
1041	Southern live oak	12	No	5	Good	Multiple attachments at 6'; good form; slightly thin crown.
1042	Southern live oak	12	No	4	Moderate	Multiple attachments at 6'; pruned for light east; slightly thin crown.
1043	Southern live oak	8	No	4	Moderate	Multiple attachments at 7'; good form; thinning crown.
1044	Southern live oak	6	No	3	Moderate	Multiple attachments at 6'; small crown; slightly thin crown.
1045	Southern live oak	9	No	3	Moderate	Multiple attachments at 6'; small thin crown.
1046	Southern live oak	9	No	4	Moderate	Multiple attachments at 7'; good form; thinning crown; one-
1047	Southern live oak	12	No	4	Moderate	Multiple attachments at 7'; good form; thinning crown;
1048	Southern live oak	7	No	3	Poor	Multiple attachments at 6'; twig dieback; small crown.
1049	Southern live oak	10	No	4	Moderate	Multiple attachments at 7'; good form; thinning crown.
1050	Southern live oak	11	No	3	Moderate	Multiple attachments at 6'; thin crown.
1051	Southern live oak	10	No	3	Moderate	Multiple attachments at 6'; thin crown.
1052	Southern live oak	7	No	3	Moderate	Multiple attachments at 5'; compact form; thinning crown.
1053	Southern live oak	9	No	3	Moderate	Multiple attachments at 7'; slightly thin crown; pruned on east for light.
1054	Southern live oak	6	No	3	Poor	Multiple attachments at 7'; bark checking; small thin crown.
1055	Southern live oak	11	No	5	Good	Multiple attachments at 7'; good form and structure.
1056	Southern live oak	7	No	3	Moderate	Multiple attachments at 6'; twig and branch dieback.
1057	Southern live oak	6	No	2	Poor	Thin crown; branch and twig dieback.
1058	Southern live oak	7	No	4	Moderate	Codominant at 6'; slightly thin crown.
1059	Southern live oak	8	No	4	Moderate	Codominant at 7'; thinning crown.
1060	Southern live oak	7	No	3	Moderate	Multiple attachments at 7'; thinning crown.
1061	Southern live oak	8	No	3	Moderate	Multiple attachments at 7'; thinning crown.
1062	Southern live oak	6	No	3	Moderate	Multiple attachments at 7'; small thin crown.
1063	Southern live oak	6	No	3	Poor	Multiple attachments at 7'; thin crown; dieback.

# Tree Assessment

California Center  
Pleasanton, California  
January, February & August 2012



TREE No.	SPECIES	SIZE DIAMETER (in inches)	HERITAGE?	CONDITION 1=POOR 5=EXCELLENT	SUITABILITY FOR PRESERVATION	COMMENTS
1064	Callery pear	14	No	4	Good	Multiple attachments at 8'; one stem is upright lateral west.
1065	Callery pear	13	No	4	Good	Multiple attachments at 8'; slight lean east; small lateral west.
1066	Callery pear	13	No	3	Moderate	Codominant trunks at 8'; one sided north; pruned away from
1067	Callery pear	12	No	3	Moderate	Multiple attachments at 9'; one sided south; pruned away
1068	Callery pear	16	No	4	Good	Multiple attachments at 9'; full crown; end weight.
1069	Callery pear	6	No	5	Good	Good young tree; one sided south; small trunk wound.
1070	Callery pear	13	No	4	Moderate	Multiple attachments at 8'; one sided north; pruned away from light south.
1071	Callery pear	12	No	4	Moderate	Multiple attachments at 8'; one sided south; pruned away from light north.
1072	Callery pear	14	No	4	Moderate	Multiple attachments at 8'; slight lean east; in small island.
1073	Callery pear	14	No	4	Good	Multiple attachments at 8'; 4" lateral east.
1074	Callery pear	12	No	4	Moderate	Multiple attachments at 8'; one sided north; pruned away from
1075	Callery pear	12	No	4	Moderate	Multiple attachments at 8'; one sided south; pruned away from light north.
1076	Callery pear	11	No	3	Moderate	Multiple attachments at 8'; small crown; in small island.
1077	Callery pear	6	No	3	Moderate	Small crown; basal wounds; fireblight.
1078	Callery pear	12	No	4	Good	Multiple attachments at 8'; good form and structure.
1079	Callery pear	14	No	4	Good	Multiple attachments at 8'; laterals east.
1080	Callery pear	15	No	4	Good	Multiple attachments at 8'; lateral west.
1081	Callery pear	15	No	4	Good	Multiple attachments at 8'; laterals east.
1082	Callery pear	15	No	4	Good	Multiple attachments at 8'; good form and structure.
1083	Callery pear	15	No	4	Moderate	Multiple attachments at 8'; laterals; root injury; no basal flare north.
1084	Callery pear	16	Yes	3	Poor	Multiple attachments at 7'; leans east; roots exposed west; no basal flare east .
1085	Callery pear	16	Yes	4	Good	Multiple attachments at 9'; slight lean east.
1086	Callery pear	15	Yes	4	Good	Multiple attachments at 9'; slight lean east; laterals.

# Tree Assessment

California Center  
Pleasanton, California  
January, February & August 2012



TREE No.	SPECIES	SIZE DIAMETER (in inches)	HERITAGE?	CONDITION 1=POOR 5=EXCELLENT	SUITABILITY FOR PRESERVATION	COMMENTS
1087	Callery pear	14	No	4	Moderate	Multiple attachments at 8'; in small island.
1088	Callery pear	11	No	3	Moderate	Multiple attachments at 8'; poor branch structure; in small island.
1089	Callery pear	15	No	4	Good	Multiple attachments at 10'; laterals.
1090	Callery pear	17	Yes	4	Moderate	Multiple attachments at 10'; spreading form; history of branch failure.
1091	Callery pear	12	No	4	Moderate	Multiple attachments at 8'; one side north; laterals.
1092	Callery pear	9	No	3	Moderate	Multiple attachments at 8'; basal wound; fair structure.
1093	Callery pear	16	Yes	4	Moderate	Multiple attachments at 8'; spreading form; history of branch failure.
1094	Callery pear	16	Yes	4	Moderate	Multiple attachments at 8'; narrow attachment at 10'.
1095	Callery pear	13	No	4	Moderate	Multiple attachments at 8'; upright, narrow form; basal wounds.
1096	Callery pear	14	No	4	Good	Multiple attachments at 8'; upright form.
1097	Callery pear	17	Yes	4	Moderate	Multiple attachments at 8'; one sided north; lateral northwest.
1098	Callery pear	15	No	4	Moderate	Multiple attachments at 8'; narrow attachments; lateral east wounded.
1099	Callery pear	9	No	3	Moderate	Multiple attachments at 8'; upright, narrow form.
1100	Callery pear	16	No	4	Moderate	Multiple attachments at 10'; narrow attachments; history or branch failure.
1101	Callery pear	14	No	4	Moderate	Multiple attachments at 8'; narrow attachments.
1102	Callery pear	16	No	4	Good	Multiple attachments at 8'; good form and structure.
1103	Callery pear	15	No	3	Poor	Multiple attachments at 8'; history of branch failure; outgrown tiny island.
1104	Callery pear	13	No	3	Poor	Multiple attachments at 8'; outgrown tiny island.
1105	Callery pear	5	No	3	Poor	Small crown; in tiny island.
1106	Callery pear	6	No	3	Poor	Poor structure; in tiny island.
1107	Callery pear	5	No	3	Poor	Upright form; fireblight; in tiny island.
1108	Callery pear	7	No	3	Poor	Upright form, fair structure; in tiny island.
1109	Callery pear	5	No	3	Poor	Upright form; fireblight; in tiny island.

# Tree Assessment

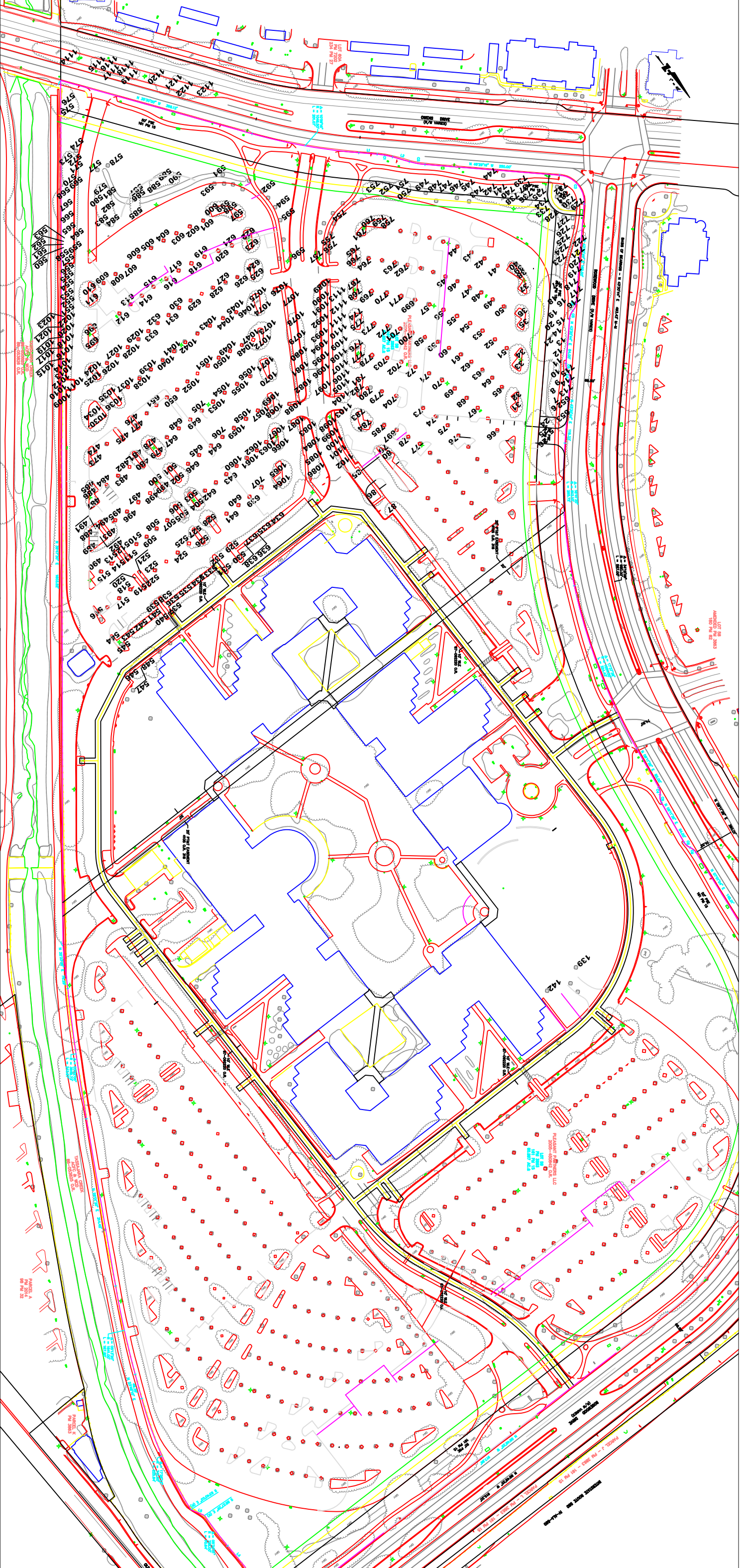
California Center  
Pleasanton, California  
January, February & August 2012



TREE No.	SPECIES	SIZE DIAMETER (in inches)	HERITAGE?	CONDITION 1=POOR 5=EXCELLENT	SUITABILITY FOR PRESERVATION	COMMENTS
1110	Callery pear	5	No	3	Poor	Crown bowed east; fireblight; in tiny island.
1111	Callery pear	6	No	3	Poor	Upright form; laterals; in tiny island.
1112	Callery pear	8	No	3	Poor	Good form and structure; in tiny island.
1113	Callery pear	8	No	3	Poor	Good form; fair structure; in tiny island.
1114	Evergreen ash	17	No	3	Moderate	Multiple attachments at 8'; twig dieback; full crown.
1115	Evergreen ash	8	No	3	Poor	Thin crown; one-sided to E.; sunburned bark.
1116	Evergreen ash	13	No	3	Poor	Sunburned trunk; corrected form to E.; full crown.
1117	Evergreen ash	8	No	3	Poor	Sunburned trunk; multiple attachments at 6'.
1118	Evergreen ash	7	No	3	Poor	Thin crown; multiple attachments at 6'; dieback in upper crown.
1119	Evergreen ash	11	No	4	Good	Good form and structure; full crown; multiple attachments at 6'
1120	Evergreen ash	9	No	2	Poor	Extensive decay in upright codominant stems; twig and branch dieback.
1121	Evergreen ash	13	No	3	Poor	Leans N.; poor form; codominant at 8' with narrow attachment.
1122	Evergreen ash	16	No	4	Moderate	Codominant at 7'; surface roots; full crown.
1123	Evergreen ash	11	No	3	Moderate	Multiple attachments at 6'; thin crown; sunburned trunk.

# Tree Assessment Map

California Center  
Pleasanton, CA



Notes:  
Base map provided by:  
Gates & Associates, San Ramon, CA  
Numbered tree locations  
are approximate.