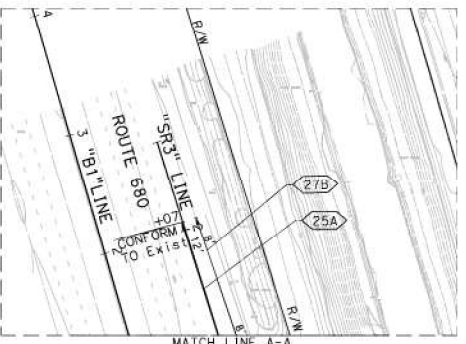


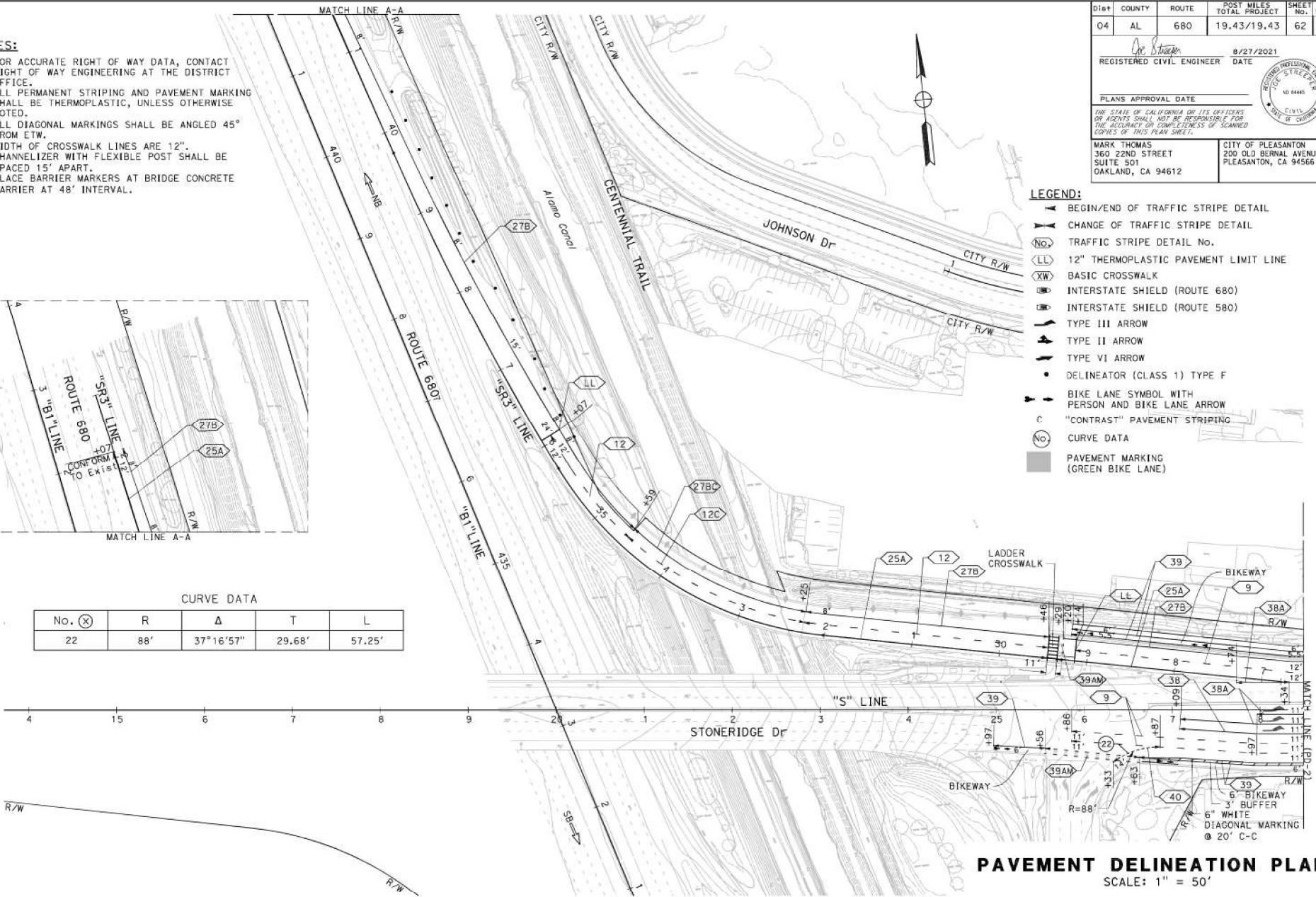
STATE OF CALIFORNIA - DEPARTMENT OF TRANSPORTATION
 CONSULTANT FUNCTIONAL SUPERVISOR
 JOE STREEPER
 CALICULATED/DESIGNED BY
 JERRY TRAN
 CHECKED BY
 SHAWN P. O'KEEFE
 REVISOR
 DATE REVISOR

- NOTES:**
1. FOR ACCURATE RIGHT OF WAY DATA, CONTACT RIGHT OF WAY ENGINEERING AT THE DISTRICT OFFICE.
 2. ALL PERMANENT STRIPING AND PAVEMENT MARKING SHALL BE THERMOPLASTIC, UNLESS OTHERWISE NOTED.
 3. ALL DIAGONAL MARKINGS SHALL BE ANGLED 45° FROM ETW.
 4. WIDTH OF CROSSWALK LINES ARE 12".
 5. CHANNELIZER WITH FLEXIBLE POST SHALL BE SPACED 15' APART.
 6. PLACE BARRIER MARKERS AT BRIDGE CONCRETE BARRIER AT 48' INTERVAL.



CURVE DATA

No. (X)	R	Δ	T	L
22	88'	37°16'57"	29.68'	57.25'



- LEGEND:**
- BEGIN/END OF TRAFFIC STRIPE DETAIL
 - CHANGE OF TRAFFIC STRIPE DETAIL
 - TRAFFIC STRIPE DETAIL No.
 - 12" THERMOPLASTIC PAVEMENT LIMIT LINE
 - BASIC CROSSWALK
 - INTERSTATE SHIELD (ROUTE 680)
 - INTERSTATE SHIELD (ROUTE 580)
 - TYPE III ARROW
 - TYPE II ARROW
 - TYPE VI ARROW
 - DELINEATOR (CLASS 1) TYPE F
 - BIKE LANE SYMBOL WITH PERSON AND BIKE LANE ARROW
 - "CONTRAST" PAVEMENT STRIPING
 - CURVE DATA
 - PAVEMENT MARKING (GREEN BIKE LANE)

Dist	COUNTY	ROUTE	POST MILES TOTAL PROJECT	SHEET TOTAL SHEETS	TOTAL SHEETS
04	AL	680	19.43/19.43	62	155

REGISTERED CIVIL ENGINEER DATE 8/27/2021

PLANS APPROVAL DATE

PROF. STATE OF CALIFORNIA OR ITS OFFICERS OR AGENTS SHALL NOT BE RESPONSIBLE FOR THE ACCURACY OR COMPLETENESS OF SCANNED COPIES OF THIS PLAN SHEET.

MARK THOMAS
360 22ND STREET
SUITE 501
OAKLAND, CA 94612

CITY OF PLEASANTON
200 OLD BERNAL AVENUE
PLEASANTON, CA 94566

PAVEMENT DELINEATION PLAN
 SCALE: 1" = 50'

PD-1

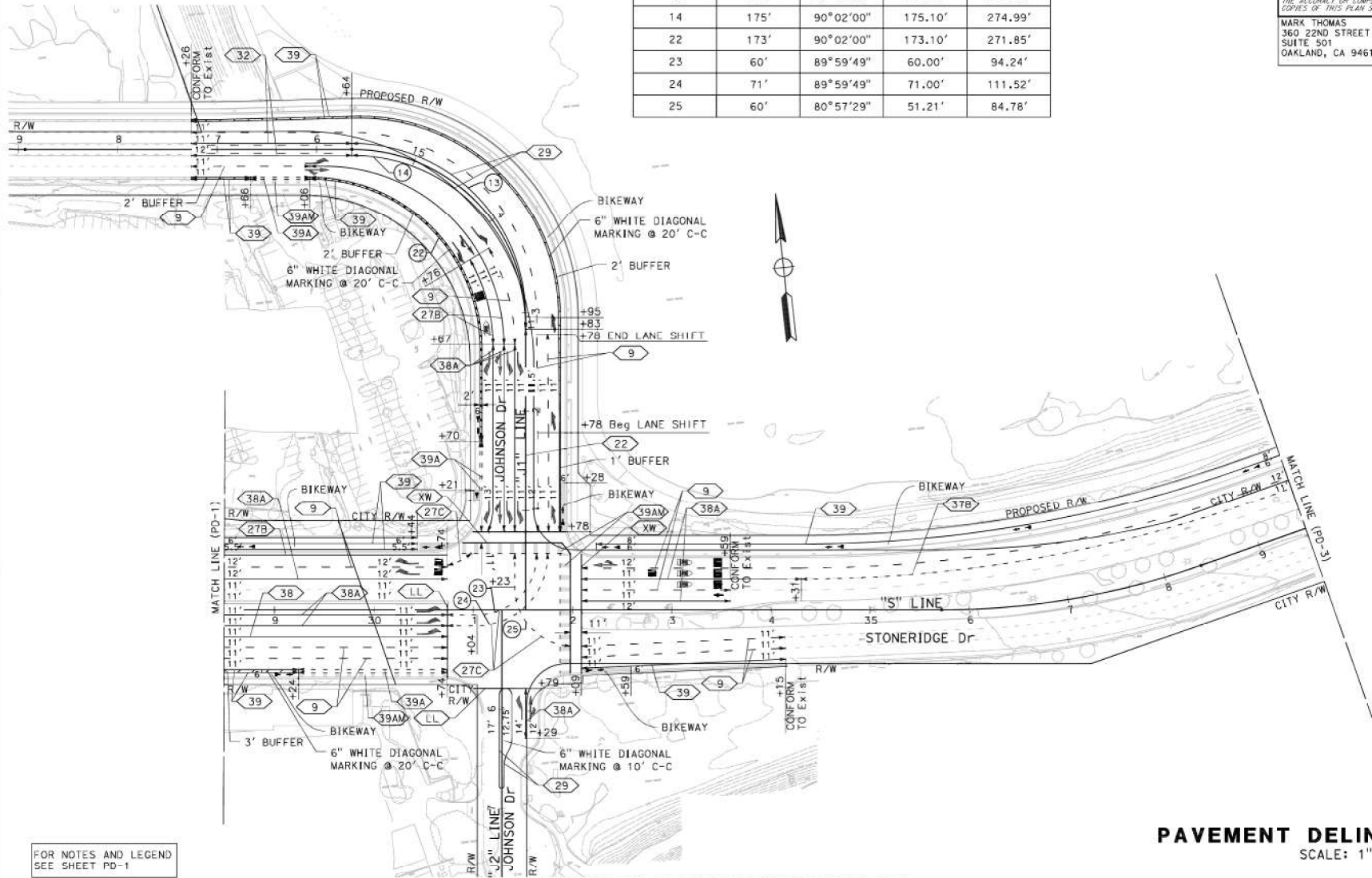
APPROVED FOR PAVEMENT DELINEATION WORK ONLY

NOTE:
FOR ACCURATE RIGHT OF WAY DATA, CONTACT RIGHT OF WAY ENGINEERING AT THE DISTRICT OFFICE.

CURVE DATA

No. (X)	R	Δ	T	L
13	175'	90°02'00"	175.10'	274.99'
14	175'	90°02'00"	175.10'	274.99'
22	173'	90°02'00"	173.10'	271.85'
23	60'	89°59'49"	60.00'	94.24'
24	71'	89°59'49"	71.00'	111.52'
25	60'	80°57'29"	51.21'	84.78'

Dist	COUNTY	ROUTE	POST MILES TOTAL PROJECT	SHEET NO.	TOTAL SHEETS
04	AL	680	19.43/19.43	63	155
REGISTERED CIVIL ENGINEER <i>Joe Streep</i> DATE 8/27/2021		PROFESSIONAL SEAL JOE STREEP CIVIL ENGINEER NO. 64445 STATE OF CALIFORNIA			
PLANS APPROVAL DATE					
THE STATE OF CALIFORNIA OR ITS OFFICERS OR AGENTS SHALL NOT BE RESPONSIBLE FOR THE ACCURACY OR COMPLETENESS OF SCANNED COPIES OF THIS PLAN SHEET.			CITY OF PLEASANTON 200 OLD BERNAL AVENUE PLEASANTON, CA 94566		
MARK THOMAS 360 22ND STREET SUITE 501 OAKLAND, CA 94612					



FOR NOTES AND LEGEND
SEE SHEET PD-1

PAVEMENT DELINEATION PLAN
SCALE: 1" = 50'

PD-2

APPROVED FOR PAVEMENT DELINEATION WORK ONLY



STATE OF CALIFORNIA - DEPARTMENT OF TRANSPORTATION
 CONSULTANT SUPERVISOR
 JOE STREEP
 CHECKED BY
 SHAWN P. O'KEEFE
 JERRY TRAN
 REVISIONS BY
 DATE REVISED