

Legend

- Callippe Trail (existing, natural, 6 ft. min.)
- - - Callippe Trail (proposed, natural, 6 ft. min.)
- Sycamore Trail (proposed, Class 1)
- - - Lund Ranch Trail (prop, paved, 10 ft. + wide)
- - - Lund Ranch Trail (prop, natural, 6 ft. wide min.)
- Foley Trail (natural, 6 ft. wide min.)
- Alisal Trail (paved, 6 ft. wide min.)
- Westbridge Connector Trail (paved, 6 ft. min.)
- Spotorno Trail (paved, 10 ft. + wide)
- Proposed bridge (6 ft. wide)
- ← Proposed trail connections to join through Spotorno property, likely on ex. ranch roads
- Additional Trails, solid = ex., dashed = proposed

Spotorno Trail Map

May 7, 2019

NTS

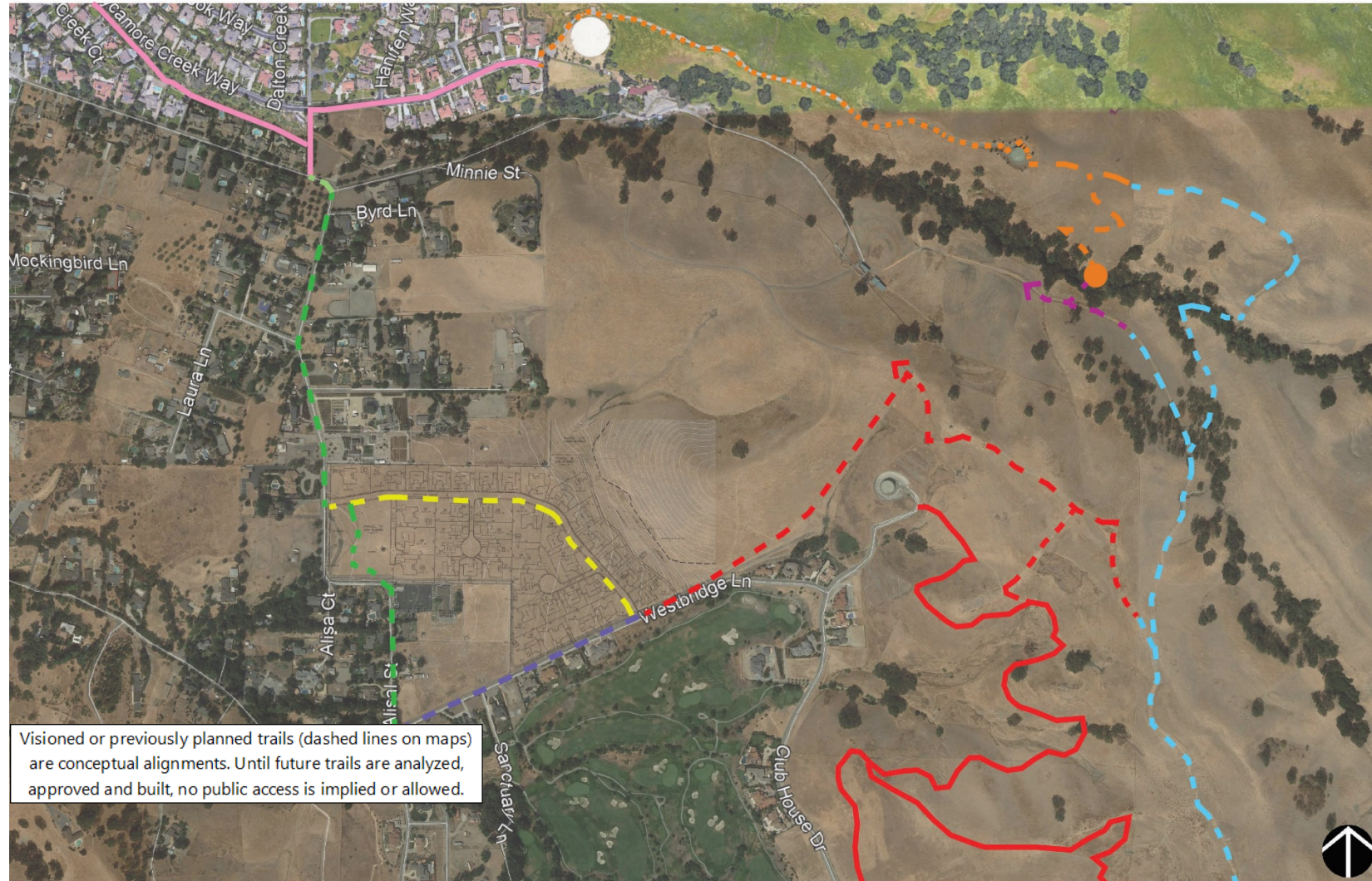


Figure A-5: Spotorno Ranch Trail Concepts