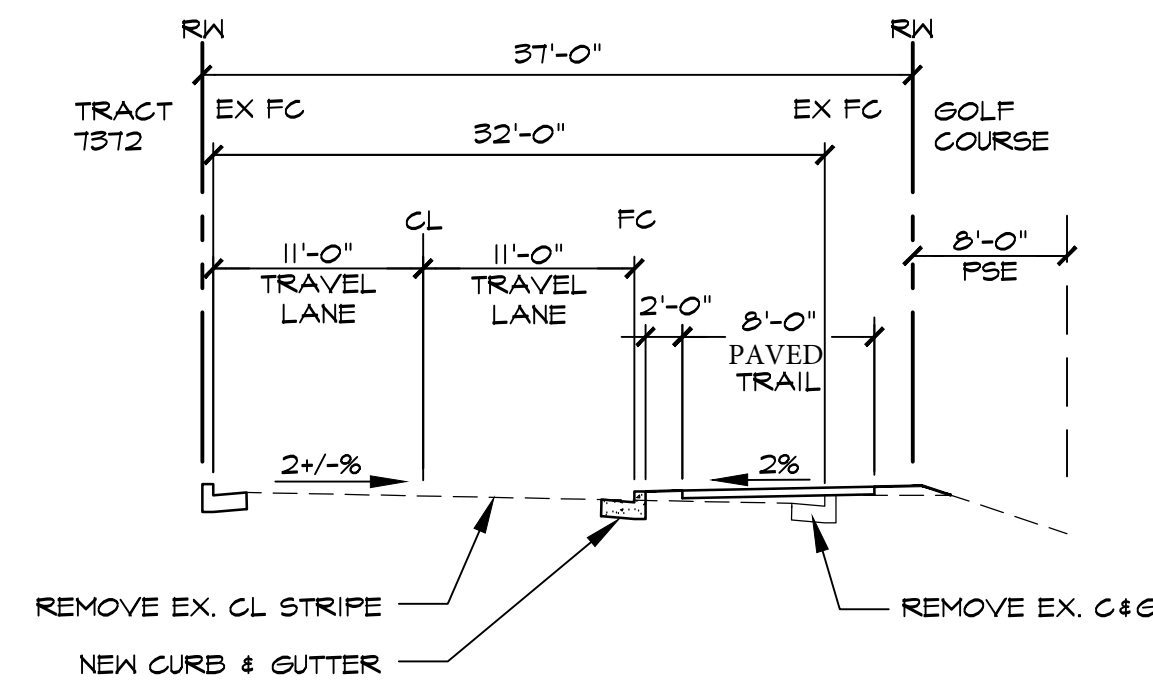
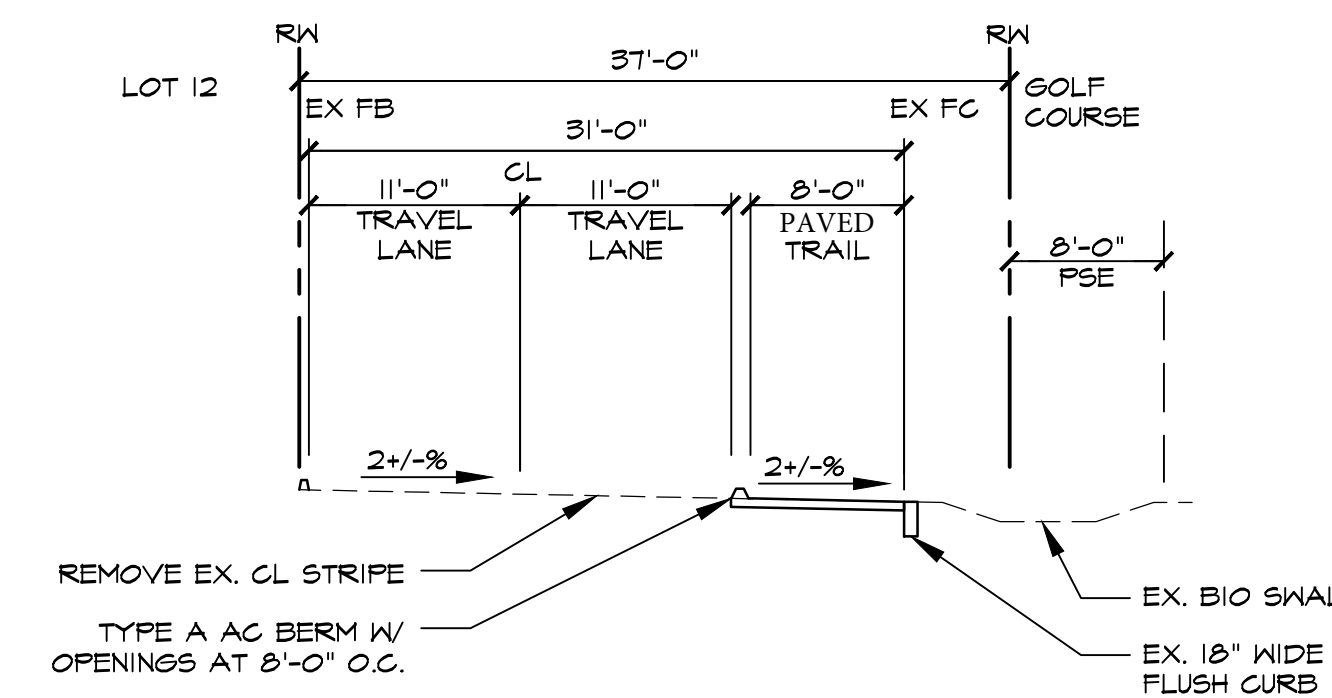


**TRAIL LEGEND**

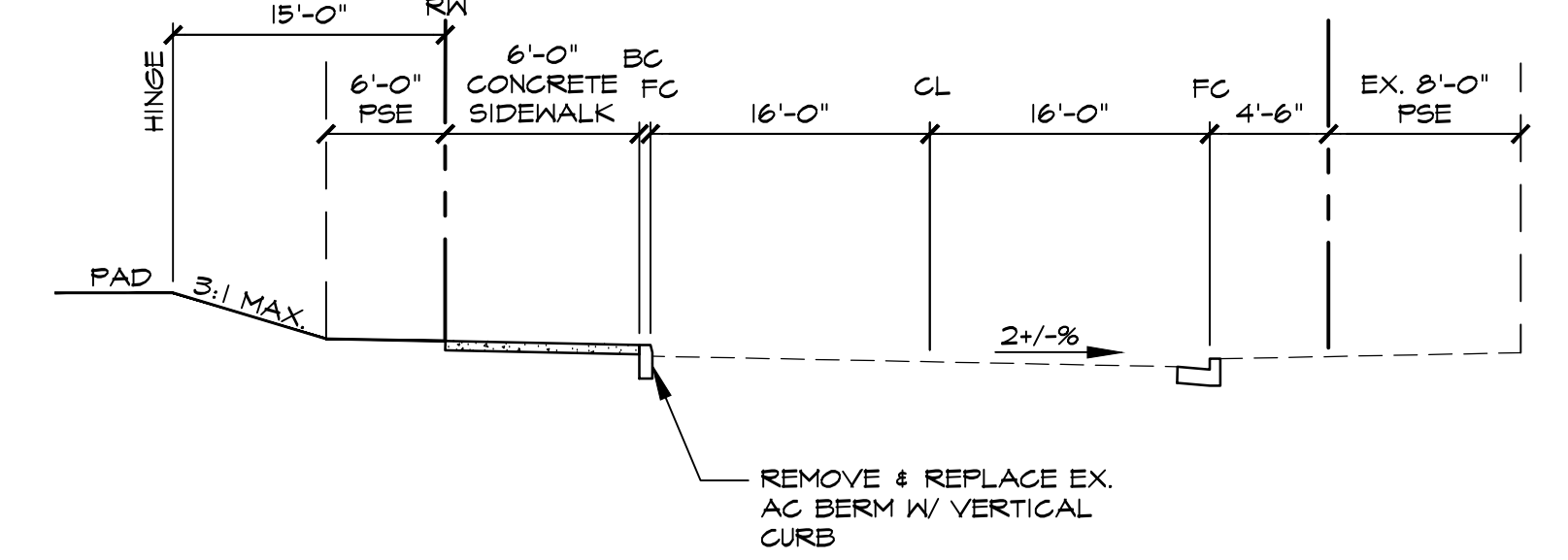
- SPOTORNO FLATS TRAIL (PAVED, 8' WIDE)
- CALLIPPE TRAIL EXTENSION (PROPOSED - 6' WIDE MIN. UNLESS OTHERWISE NOTED)
- WESTBRIDGE CONNECTOR TRAIL (PAVED, 6' WIDE MIN.)
- FOLEY TRAIL (NAT., 6' WIDE MIN.)
- CALLIPPE TRAIL EXISTING
- FOLEY TRAIL CONNECTION
- ALISAL TRAILS BY OTHERS



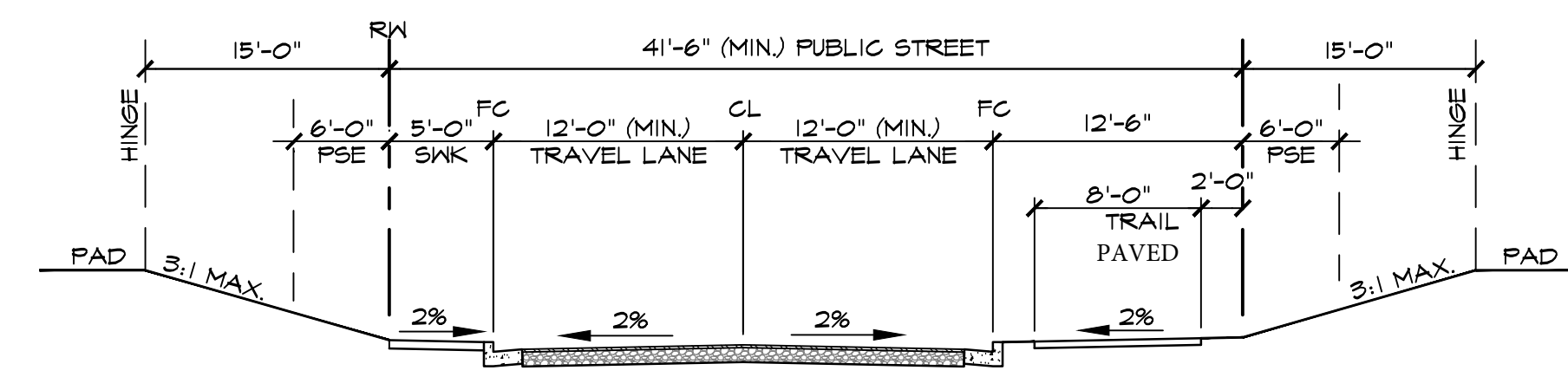
**WESTBRIDGE LANE (SPOTORNO RANCH DRIVE)** NOT TO SCALE 02



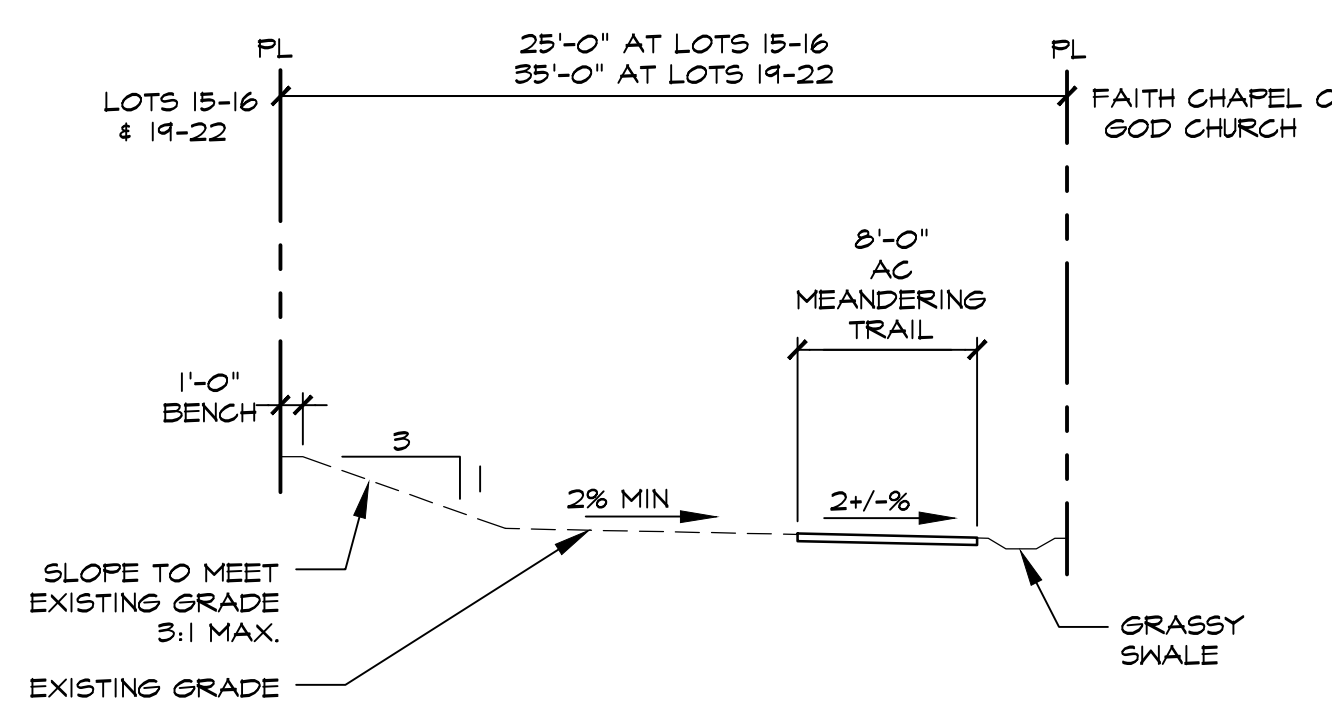
**WESTBRIDGE LANE (ALONG LOT 12)** NOT TO SCALE 02



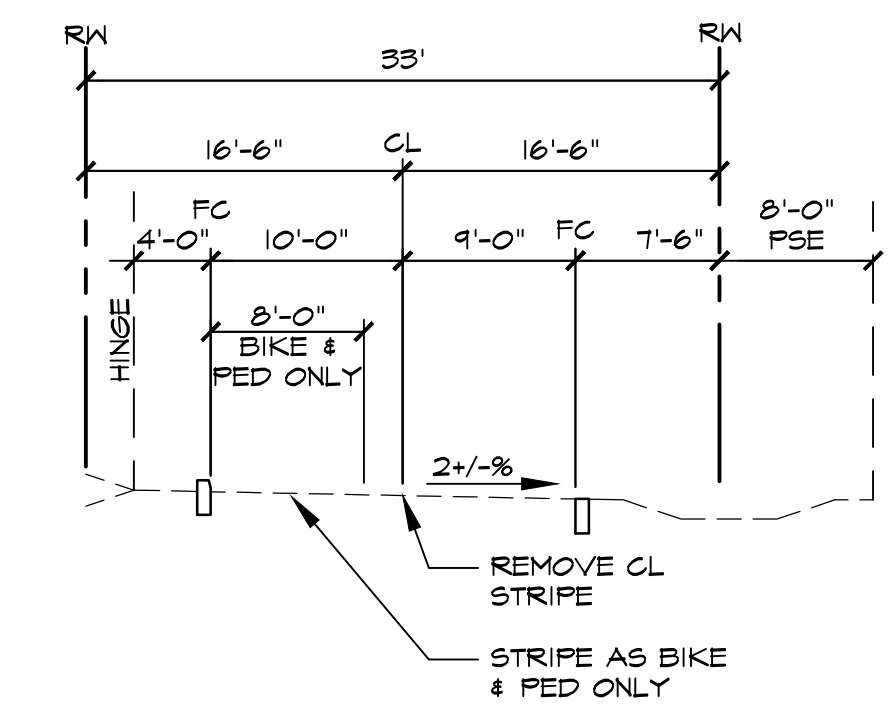
**WESTBRIDGE LANE (LOT 13-15)** NOT TO SCALE 02



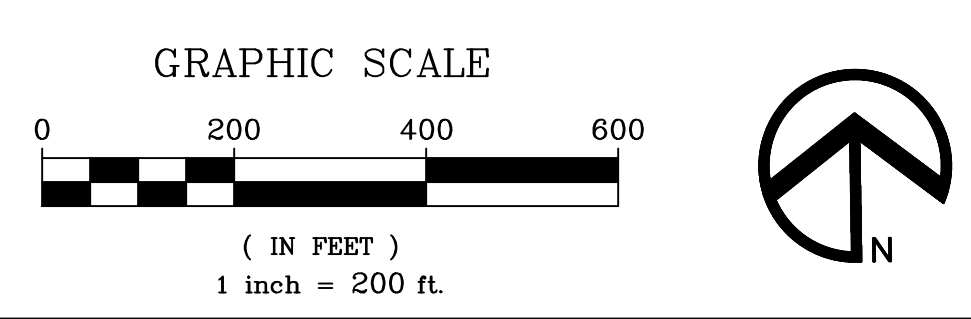
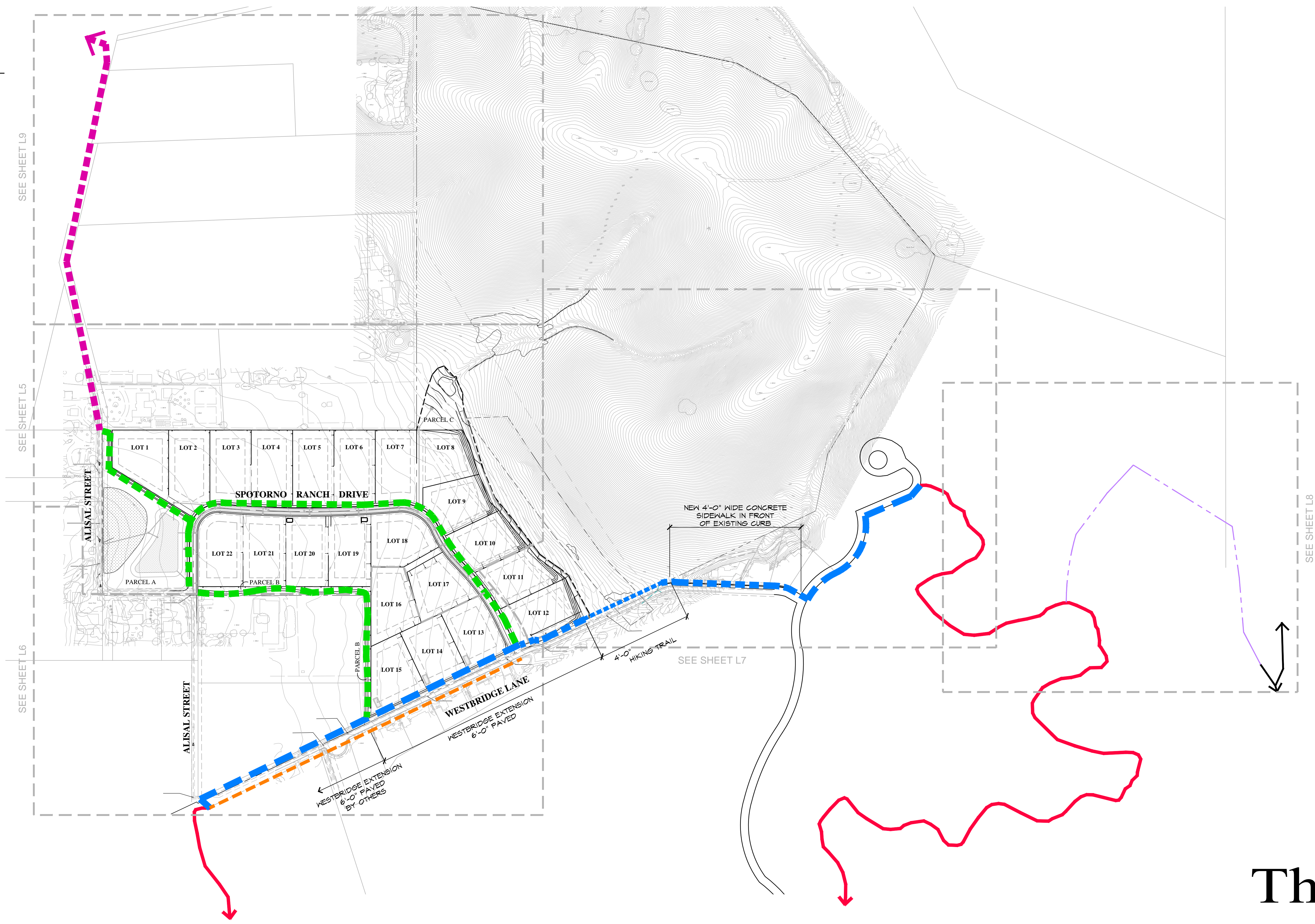
**SPOTORNO RANCH DRIVE** NOT TO SCALE 02



**PARCEL B (ALONG LOTS 15-16 & 19-22)** NOT TO SCALE 02



**WESTBRIDGE LANE (TO HAPPY VALLEY ROAD)** NOT TO SCALE 02



**RIPLEY DESIGN GROUP**

LANDSCAPE ARCHITECTURE  
LAND PLANNING  
1615 BONANZA STREET  
SUITE 314  
WALNUT CREEK, CA 94596  
TEL: 925.938.7377  
FAX: 925.9387436

AVS RANCH LLC

**Preliminary Master Trail Plan**

**The Flats at Spotorno Ranch**  
Pleasanton, California

May 20, 2021

L4