

### **Summer Time Learning Center**

**Overview**

Summer Bowers is planning to open a tutoring and enrichment business called Summer Time Learning Center. Students will be aged approximately 4 – 7 years old and enroll in Pre-K, Kindergarten or 1<sup>st</sup> Grade classes. Each session would have 15 children and be taught by a highly qualified credential teacher, with additional assistance by an on-site aide. Each session is approximately three (3) hours.

**Staff – Highly Qualified Credentialed Teachers**

Summer Time will be staffed by credentialed and highly qualified teachers. Additionally, each session will have an aide to assist the teachers and supervise children that need to use the buildings common restroom area.

Summer Bowers: Holds a Multiple Subject Clear Credential with a CLAD Emphasis. She has been in education for 12 years employed with the Oakland Diocese and Castro Valley Unified School District. She has taught second grade, mentored new teachers in the Beginning Teacher Support and Assessment program (BTSA) and Tri Valley Teacher Induction Program (TV TIP). During the 2010 - 2011 school year, Summer was an Intervention Specialist, helping to design and implement a district wide intervention program.

Kadie Jew-Fortner: Holds a Multiple Subject Clear Credential with a CLAD Emphasis and a Masters in Education. She has been teaching for 9 years working with Hayward Unified and Castro Valley Unified School District. She has taught first and sixth grade and is currently teaching kindergarten. She has been a master teacher and has also been a support provider in the BTSA program.

Tamara Reneau: Holds a Multiple Subject Clear Credential with a CLAD Emphasis and a Masters in Education. She has been teaching for 4 years with Castro Valley Unified School District. She has taught pre-kindergarten and kindergarten.

**Program / Sessions**

Summer Time will offer eight (8) total sessions:

June 20 <sup>th</sup> – July 1 <sup>st</sup> K/1 Combo 9AM – 12PM K/1 Combo 1PM – 4PM	July 11 <sup>th</sup> – July 22 <sup>nd</sup> Pre-K 9AM – 12PM K/1 Combo 1PM – 4PM
July 25 <sup>th</sup> – August 5 <sup>th</sup> Pre-K 9AM – 12PM K/1 Combo 1PM – 4PM	August 8 <sup>th</sup> – August 19 <sup>th</sup> K/1 Combo 9AM – 12PM K/1 Combo 1PM – 4PM

**Parking**

All students will be dropped off and picked up by their parent or guardian. Summer Time will have 8 unreserved parking spaces.

**RECEIVED**

APR 5 2011

CITY OF PLEASANTON  
PLANNING DIVISION

PCWP-290

**EXHIBIT B**

**Suite to be Used in Building**

Summer Time will utilize suite 109 which is 1,343sf. The space has a large open area ideal for student instruction, a small classroom in the back that can be utilized as a computer room and storage / office room. Suite 109 is located directly next to the buildings core bathrooms, so students (while always being supervised by the teacher or aide) do not have far to go if they need to use the restroom.

**Additional Tenants in Building**

There are currently five (5) tenants in the building at 1020 Serpentine Ln occupying 10,387sf:

Tenant	Suite Number	Square Footage
Diagnostic BioSystems	114	4,412sf
ExecuStay	115	1,739
Kinetix International	105	1,604
Hodnefield Properties	111	1,582
Sylvite Western Region, LLC	104	1,050

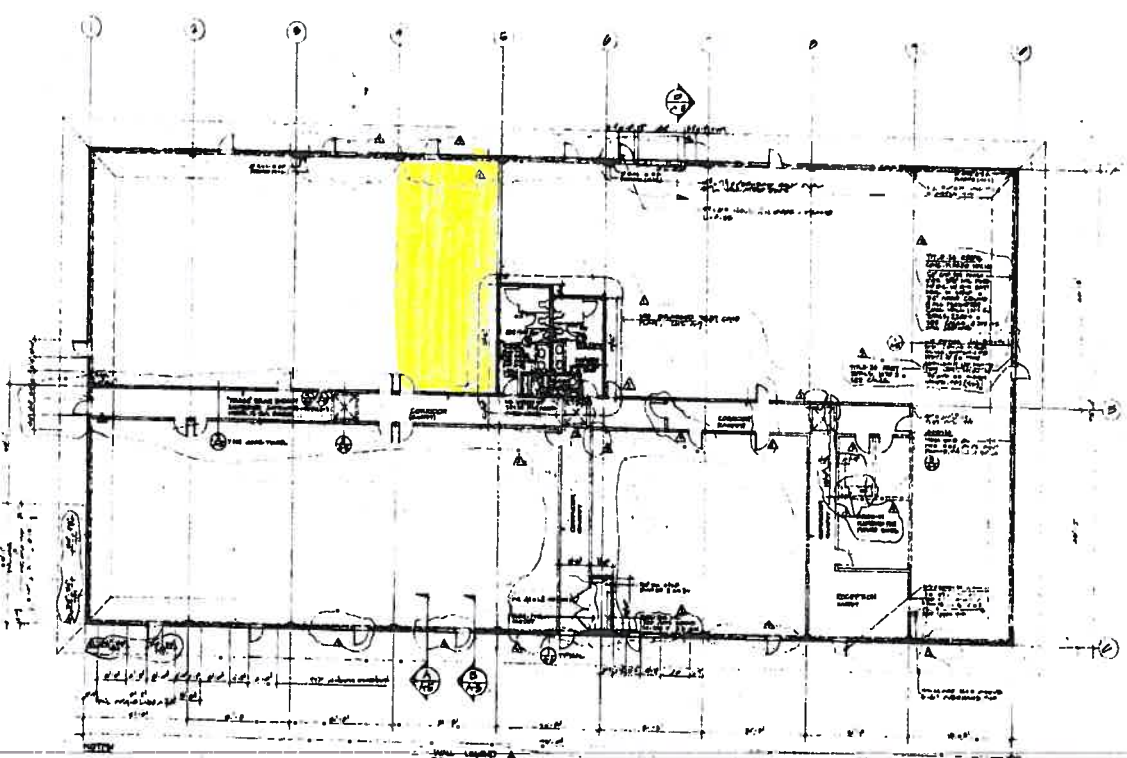
There are four (4) vacancies in the building totaling 6,253sf.

---

**Need for Pleasanton**

Because of budget cuts, Pleasanton has been forced to cut all the remedial and enrichment summer programs for K – 5. This has created a void for parents and students alike who were planning to use the summer to give their children fun and educational learning opportunities. The program will continue to support student learning by using creative themes that incorporate California grade level standards.





1. ALL WORK SHALL BE IN ACCORDANCE WITH THE S.D.C. AND THE S.D.C. CODE.  
 2. ALL WORK SHALL BE DONE IN ACCORDANCE WITH THE S.D.C. AND THE S.D.C. CODE.  
 3. ALL WORK SHALL BE DONE IN ACCORDANCE WITH THE S.D.C. AND THE S.D.C. CODE.

ALL WORK SHALL BE DONE IN ACCORDANCE WITH THE S.D.C. AND THE S.D.C. CODE.  
 ALL WORK SHALL BE DONE IN ACCORDANCE WITH THE S.D.C. AND THE S.D.C. CODE.  
 ALL WORK SHALL BE DONE IN ACCORDANCE WITH THE S.D.C. AND THE S.D.C. CODE.

FLOOR PLAN 101

FOR CONSTRUCTION

ALL WORK SHALL BE DONE IN ACCORDANCE WITH THE S.D.C. AND THE S.D.C. CODE.  
 ALL WORK SHALL BE DONE IN ACCORDANCE WITH THE S.D.C. AND THE S.D.C. CODE.  
 ALL WORK SHALL BE DONE IN ACCORDANCE WITH THE S.D.C. AND THE S.D.C. CODE.

ALL WORK SHALL BE DONE IN ACCORDANCE WITH THE S.D.C. AND THE S.D.C. CODE.  
 ALL WORK SHALL BE DONE IN ACCORDANCE WITH THE S.D.C. AND THE S.D.C. CODE.  
 ALL WORK SHALL BE DONE IN ACCORDANCE WITH THE S.D.C. AND THE S.D.C. CODE.

ALL WORK SHALL BE DONE IN ACCORDANCE WITH THE S.D.C. AND THE S.D.C. CODE.  
 ALL WORK SHALL BE DONE IN ACCORDANCE WITH THE S.D.C. AND THE S.D.C. CODE.  
 ALL WORK SHALL BE DONE IN ACCORDANCE WITH THE S.D.C. AND THE S.D.C. CODE.

24X



195'-0"

21'-8"

21'-8"

5'-6"

6'-0"

4'-2"

6'-0"

5'-6"

6'-0"

4'-2"

6'-0"

5'-6"

Open classroom  
concept

office/storage

Pre-K/computer  
room

MEN

WOMEN

JAN.

109

105

Interior Hallway