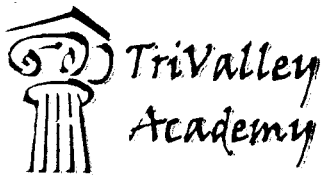


	7:00 PM - 9:00 PM	Bible Study Classes/Choir practice	
Fridays	5:30 AM - 7:00 AM	Prayer Meeting	
	9:00 AM - 10:00 AM	Administration//Office/Senior member ministry	
	12:00 PM - 6:30 PM		School-aged Chinese and Academic Programs
	7:00 PM - 9:00 PM	Youth ministry/prayer meeting	

Planned Schedule of Operations:

Proposed Daily Schedule for School-Year	
Time	Program
9:00 AM - 12:00 PM	n/a
12:00 PM - 1:00 PM	Chinese Culture Theme
1:15 PM - 2:15 PM	Chinese Language (session 1)
2:30 PM - 3:30 PM	Math/Math Reasoning
3:45 PM - 5:00 PM	Chinese Language (session 2)
5:15 PM - 6:30 PM	Reading/Writing/Language Arts

Proposed Daily Schedule for School Holidays, Winter/Spring/Summer Breaks	
Time	Program
8:30 AM - 9:30 AM	Reading
9:45 AM - 11:00 AM	Math
11:15 AM - 12:15 PM	Chinese Language
1:15 PM - 2:30 PM	Math Reasoning
2:45 PM - 3:45 PM	Writing/Language Arts
4:00 PM - 5:00 PM	Chinese Cultural Themes
5:15 PM - 6:30 PM	Advanced Math



Applicant: Amy Mi
TriValley Academy, Inc.
amy.mi79@yahoo.com; 925-989-5287

Mailing Address: 4000 Pimlico Drive, Suite 114-268, Pleasanton, CA 94588

Subject: Application for TriValley Academy Inc. –
Under Use Permit CUP-224 (re: 5925 W. Las Positas Blvd, Suite 200, Pleasanton)

Date: April 12th, 2012

General Description

TriValley Academy provides academic learning on a variety of English language arts and math subjects with a focus on promoting the Chinese cultural heritage. It offers a tutoring based curriculum with an open enrollment to all school-aged students in the tri-valley area.

TriValley Academy currently operates at 5933 Coronado Lane, Suite 101, Pleasanton. Our intention is to open a second location under Heritage School at **5925 W. Las Positas Blvd., Suite 200, in Pleasanton** with about 5,382 square feet of space. It is within a commercial condominium facility owned by the Tri-Valley Korean Presbyterian Church ("KPC"). This facility is currently approved with Conditional Use Permit No. PCUP-224 for use by its current tenant, Little Ivy League school (LIL) to operate a tutorial school. (Attachment 1: City of Pleasanton City Council Agenda Report dated February 17, 2009, along with its attachments). LIL School will end its current lease with KPC on May 31st, 2012. TriValley Academy will start its lease with KPC on June 1st, 2012.

TriValley Academy intends to conduct the exact same business in nature and schedule as LIL school at 5925 W. Las Positas Blvd., Suite 200. When LIL applied for its current use permit in 2009, the California Department of Education did not have an official category available to define the nature of the Heritage School that fit what LIL school intended to do. Since January, 2011, it became available for an applicant under such category. With all the respect, TriValley Academy will have the identical operations as LIL, Inc., but under Heritage School.

TriValley Academy was granted the Heritage School status by the California Department of Education in January 2012 under California Education Code (EC) 33195 (Attachment 2: a printout of the heritage schools in Pleasanton from the Department of Education website). A heritage school, as defined in Education Code (EC) 33195, is *exempt* from licensure by the State Department of Social Services as a child day care center.

Sincerely,

Sign: 
Amy Mi, Director

Date: 4-12-2012



Facility Operational Hours

- Monday through Friday: 9:00 AM to 6:30 PM
- Saturdays & Sunday closed
- Summer, winter and spring school breaks Academic Programs Hours: 8:30 AM to 6:30 PM daily for approximately 12 weeks
- Hours may change with circumstances, such as holidays, or special school schedules.

Program Description:

As a California heritage school, TriValley Academy promotes Chinese culture enrichment programs as well as reading, language arts and math tutoring programs to school-aged students. The School provides three core programs:

1. Chinese Language Arts and Culture

Using a combination of standard Chinese text books and innovative-patented interactive learning tools, this program offers a fun yet formal Chinese learning environment for children and stimulates their interest of learning Chinese and its cultures integrated as part of daily curriculum.

2. English (Writing, Language Arts, Critical Reading)

Writing and Language Arts program

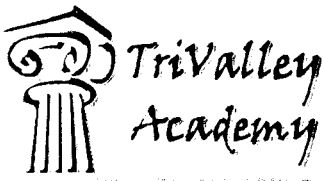
Students will learn how to write clear, coherent sentences and paragraphs that develop a central idea as well as practice on writing strategies and convention. They will learn how to engage and inspire their readers. Students will progress through the stages of the writing process including: Organization and Focus, Penmanship, Research and Technology, and Evaluation and Revision.

Critical Reading

The TriValley Academy Critical Reading program is a guided reading program that allows students to choose library books based on his/her reading level, practice on vocabularies and reading comprehension to build up a lifelong habit of reading for success. Students will be coached on how to describe and connect the essential ideas, arguments, and perspectives of the text by using their knowledge of text structure, organization, and purpose.

3. Math.

TriValley Academy's team of experienced math instructors will focus on math fundamentals and math reasoning. In addition to learning basic concepts, students will be challenged to look for creative solutions to solve complex math problems.



Students will also be trained on Math Reasoning, an activity used in a cooperative learning environment to increase an individual's ability to process mathematical concepts at a much higher level including observation, quantitative, geometry, and spatial skills.

Transportation and Parking:

Students from public and private schools are transported by car or van pools to our facility from the respective local Schools. All drivers are required to have and maintain unblemished driving records. All of TriValley Academy school vans are fully insured and covered by commercial licenses for transporting school-aged students.

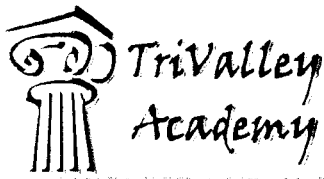
Students will be picked up from TriValley Academy between the hours of 4:00 PM and 6:30 PM by parents. LIL School has conducted an intense traffic study based on their full-capacity at 90 students. There is a letter on file with the City of Pleasanton from Mike Tassano of City Traffic Department indicating that the traffic impact fee was zero based upon the pickup schedule stated below. TriValley Academy's future operation will maintain the same pickup/exit pattern.

Pick Up/Exit Pattern		
	No. Of Students Projected at Maximum Capacity	No. Of Autos Projected at Maximum Capacity
Hours		
4:00 pm - 5:00 pm	28	19
5:00 pm - 6:00 pm	35	24
6:00 pm - 7:00 pm	27	19
Total	90	62

The proposed facility has adequate 81 parking spaces available for daily use. Since all of our attendees would be car or van pool to the facility, no additional parking spaces are required until pickup time which is between 4:00 and 6:30 pm when most tenants in the business park will be closed. TriValley Academy intends to run the same business as the LIL School in nature and schedule within the facility's use permit capacity limit. We are not anticipating any change to the schedule, traffic or any circulation impact to the site and the surrounding areas.

Security

All students are required to be signed in and signed out daily in a log book. There is a security gate at our main entrance lobby. Students can only be picked up by their parents or a designated adult on file with our organization. All designated adults are verified with their driver's licenses for identification at time of pick up.



Staff Background Check and First Aid Training

TriValley Academy requires its staff to clear a criminal background check and first aid training.

Planned Sharing of Facilities

The maximum number of total tutorial student is 90 per CUP-224 at this site. We plan to share space with KPC at 5925 W. Las Positas Blvd, Suite 200. TriValley Academy classes will meet during the days and early evenings on weekdays, whereas KPC's main use is on Saturdays and Sundays, with some activities during early morning hours and evenings after the end of TriValley Academy's operations. Therefore we do not foresee a schedule conflict.

The following table exhibits typical schedules of TriValley Academy and KPC:

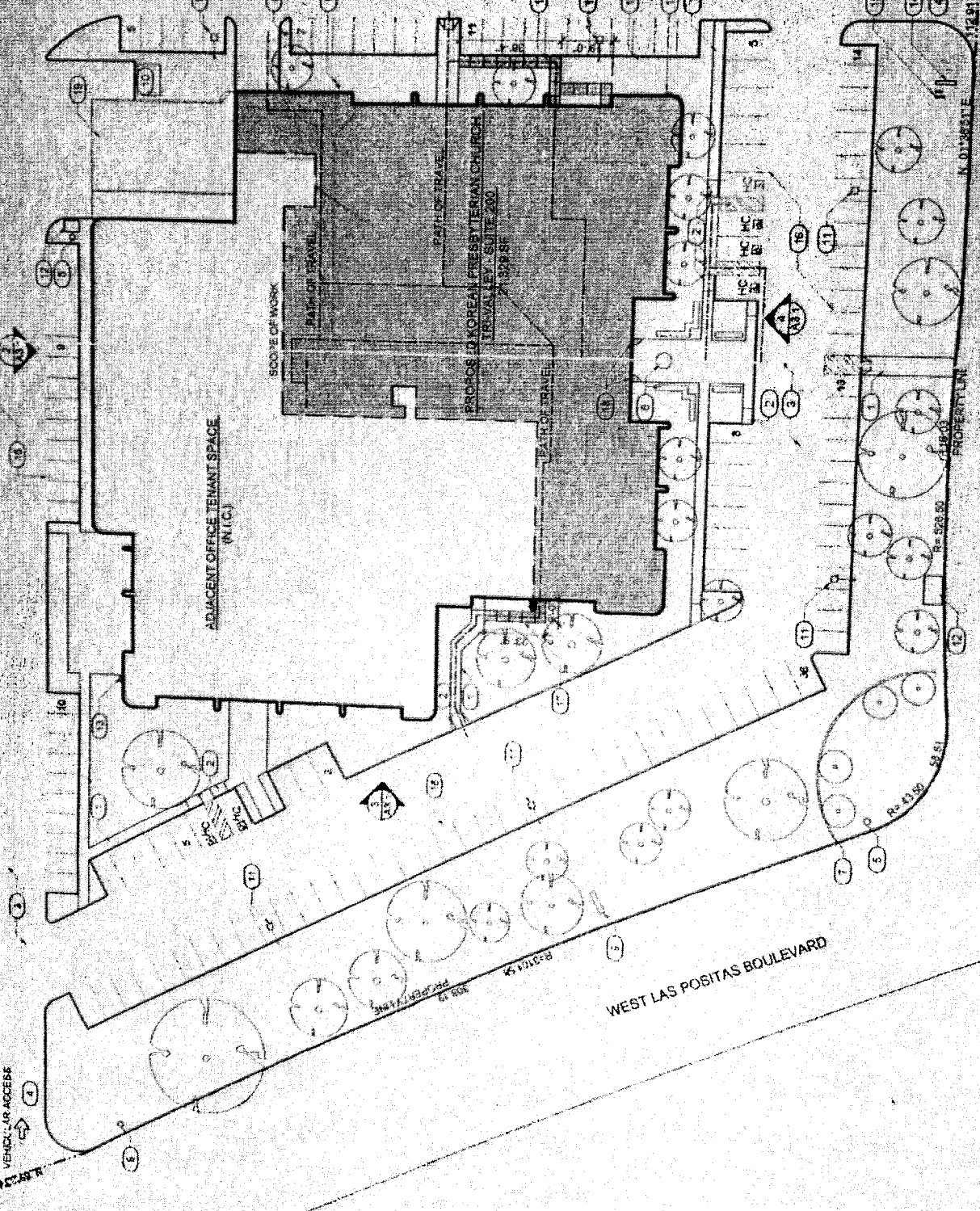
Date	Time	KPC	TriValley Academy
Mondays	5:30 AM - 7:00 AM	Prayer Meeting	
	9:00 AM - 10:00 AM	Administration//Office/Senior member ministry	
	12:00 PM - 6:30 PM		School-aged Chinese and Academic Programs
	8:00 PM - 10:00 PM	Choir Practice	
Tuesdays	5:30 AM - 7:00 AM	Prayer Meeting	
	9:00 AM - 10:00 AM	Administration//Office/Senior member ministry	
	12:00 PM - 6:30 PM		School-aged Chinese and Academic Programs
	7:00 PM - 10:00 PM	Bible Study Classes	
Wednesdays	5:30 AM - 7:00 AM	Prayer Meeting	
	9:00 AM - 10:00 AM	Administration//Office/Senior member ministry	
	12:00 PM - 6:30 PM		School-aged Chinese and Academic Programs
	7:00 PM - 9:00 PM	Church Service	
Thursdays	5:30 AM - 7:00 AM	Prayer Meeting	
	9:00 AM - 10:00 AM	Administration//Office/Senior member ministry	
	12:00 PM - 6:30 PM		School-aged Chinese and Academic Programs

ADJACENT OFFICE
PARK PARCEL



PROPERTY LINE
34.95
S. 8721.07 E.

VEHICLE ACCESS



VEHICLE ACCESS

WILLOW ROAD

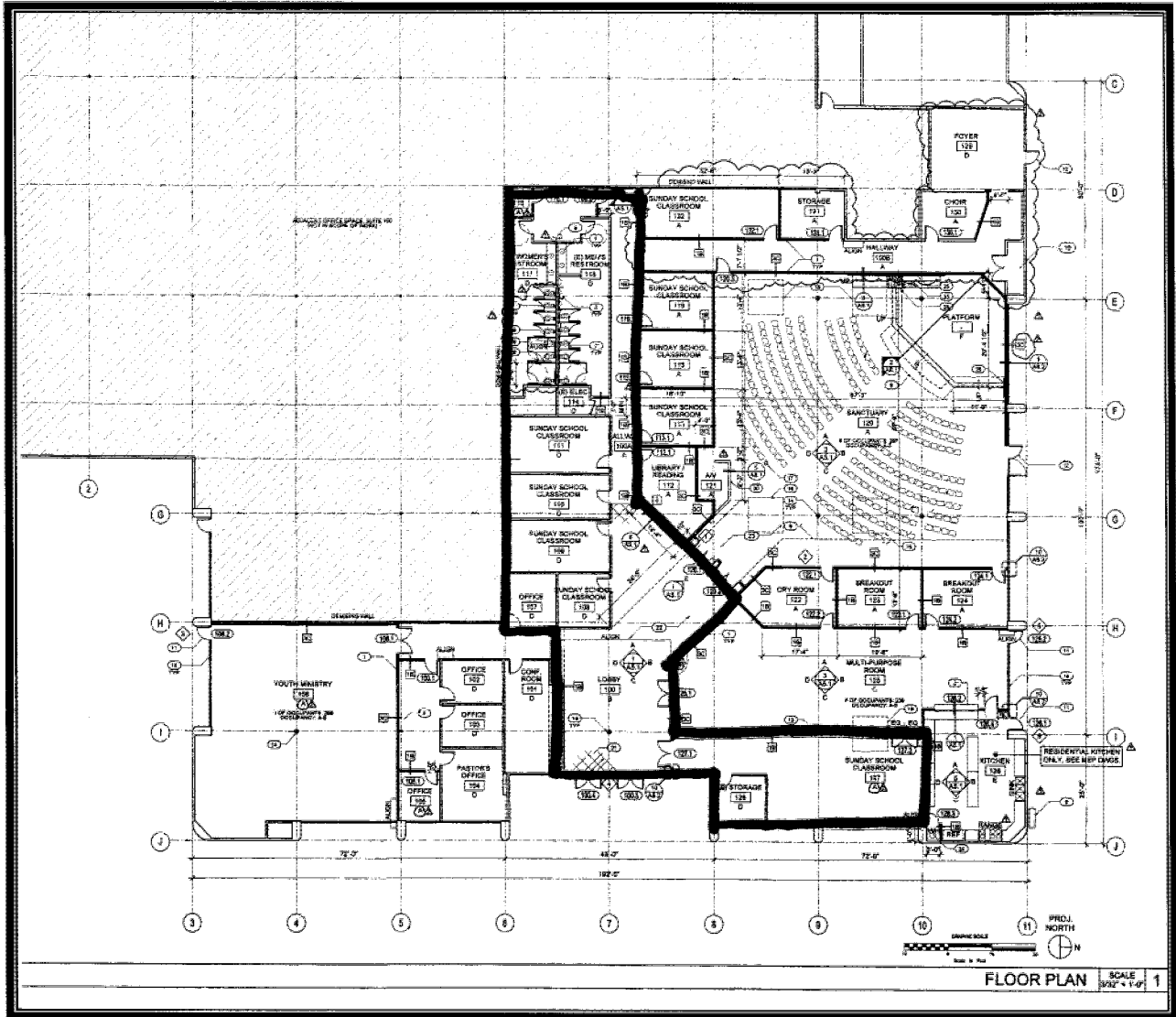
PROFESSION

K. UNIVERSITY

WEST LAS POSITAS BOULEVARD



site plan



 TVA Lease Area