



# Business Summary

Bottle & Bottega's hands-on art sessions allow anyone to un-cork their inner-artist and paint or create something of their own, inspired by original works of art with an on-site artists and a glass of wine.

**Public Events:** 50% of our business comes from our public events.

**Private Events:** The remaining 50% of our business is made up of private events. The typical private events include Adult Birthday parties, Bachelorette Parties, Bridal and Baby Showers and Corporate Team Building Programs.

**Registrations:** All of our registrations are conducted on line and in advance of our events taking place.

**Business Hours:** 1:00 PM – 10 PM

**Event Duration:** 1.5 - 2.5 Hours

**Guests:** Average 20 Maximum: 40

**Alcohol Sales:** Beer and wine sales are restricted to paying guests who are attending a public or a private event.

**Food:** Food will not be sold but free snacks (Bread and Olive Oil) will be provided.

**Total Parking in Area/Lot:** 170

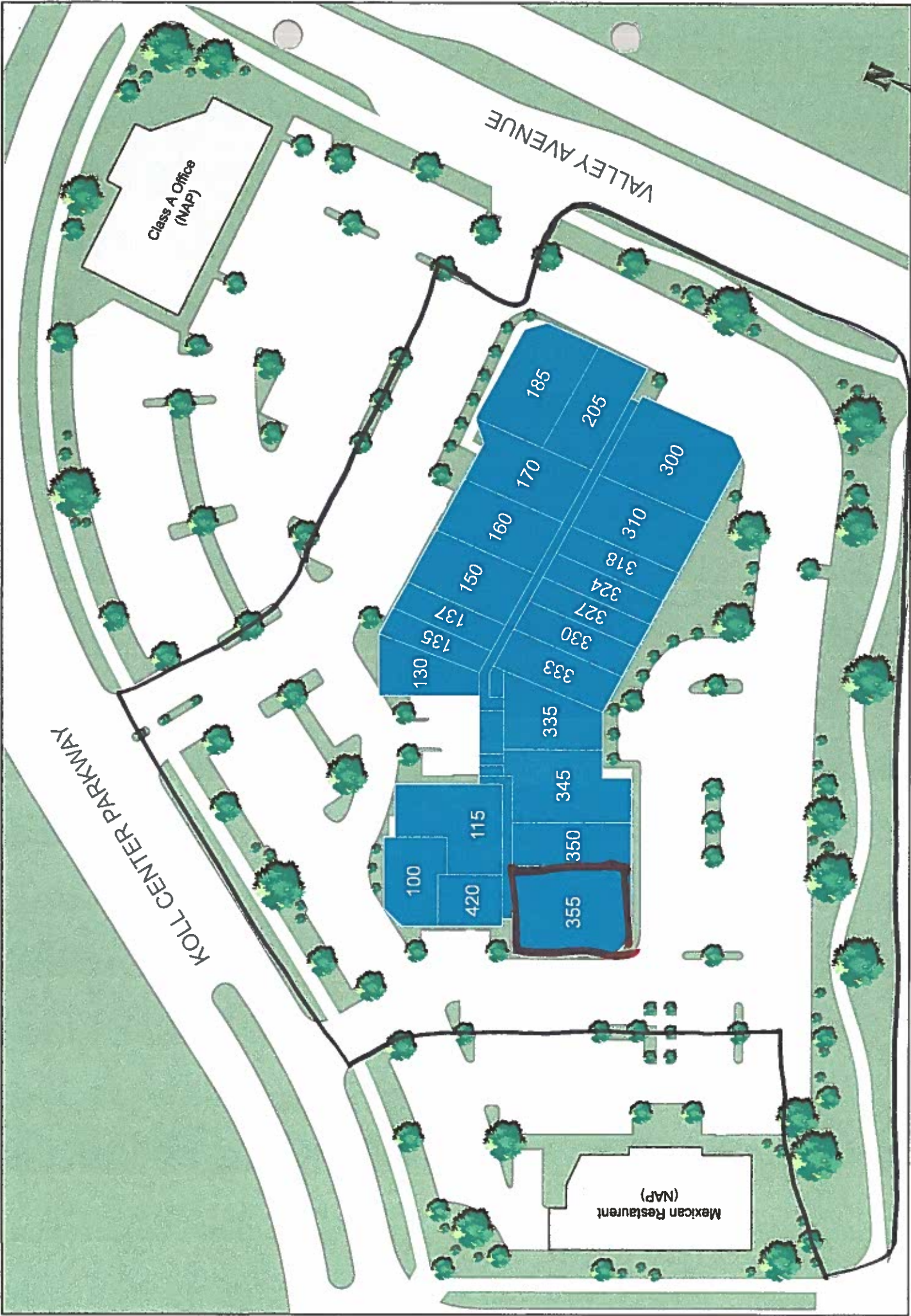
PIS-0204 (CUP)

RECEIVED

OCT 13 2015

EXHIBIT B

CITY OF PLEASANTON  
PLANNING DIVISION

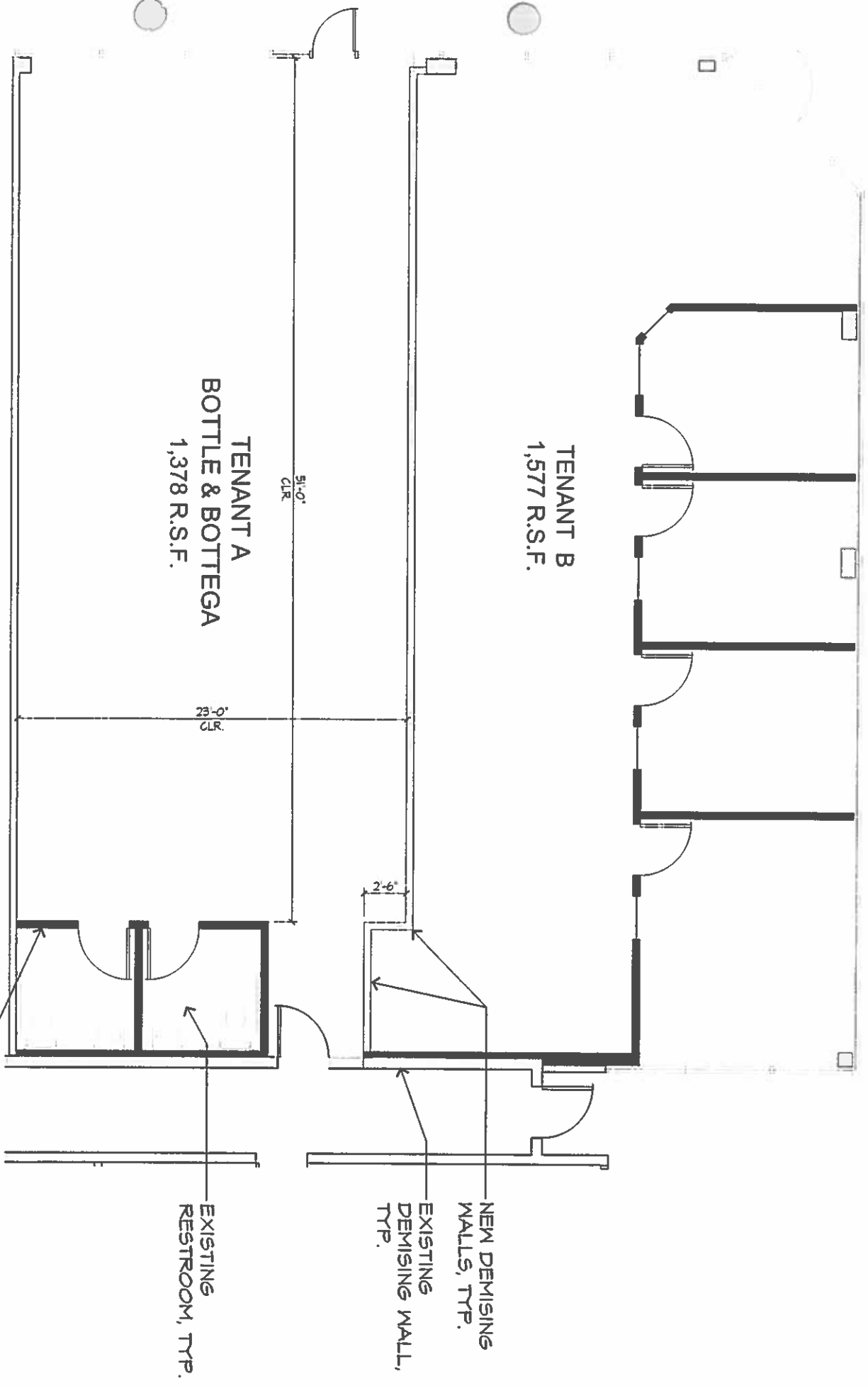


Class A Office  
(MAP)

VALLEY AVENUE

KOLL CENTER PARKWAY

Mexican Restaurant  
(MAP)



TENANT B  
1,577 R.S.F.

TENANT A  
BOTTLE & BOTTEGA  
1,378 R.S.F.

51'-0"  
CLR

23'-0"

2'-6"

Space Plan

Suite 335  
Plan Option F



IDARCHITECTURE

6700 Koll Center Parkway, Suite 110  
Pleasanton, CA 94566  
Tel: 925.484.5245 / Fax: 925.484.5206  
www.idarchitecture.com

Bernal Plaza

6654 Koll Center Parkway  
Pleasanton, CA

2015-09-17

EXISTING WALLS,  
TYP.

EXISTING  
RESTROOM, TYP.

NEW DEMISING  
WALLS, TYP.  
EXISTING  
DEMISING WALL,  
TYP.