

30 WEST ANGELA STREET REMODEL DESIGN REVIEW APPLICATION



EXHIBIT B

P16-1771

RECEIVED

JAN 13 2017

CITY OF PLEASANTON
PLANNING DIVISION

16-26

REVISIONS

SHEET TITLE

COVER
PAGE

PROJECT/OWNER

30 WEST ANGELA ST.
REMODEL
30 WEST ANGELA ST.
PLEASANTON CA
MCCOLLUM COMMERCIAL REAL ESTATE

ARCHITECT

NICHOLS • NAYLOR
ARCHITECTS
10459 SOUTH 1300 WEST SUITE 201
SOUTH JORDAN, UTAH 84085 (801) 487-3330



DATE

1 DECEMBER 2016

SHEET NUMBER

COV

REVISIONS

SHEET TITLE
EXISTING SITE PLAN

PROJECT/OWNER
**30 WEST ANGELA ST.
 REMODEL**
 30 WEST ANGELA ST.
 PLEASANTON, CA
 MICCOLI COMMERCIAL REAL ESTATE

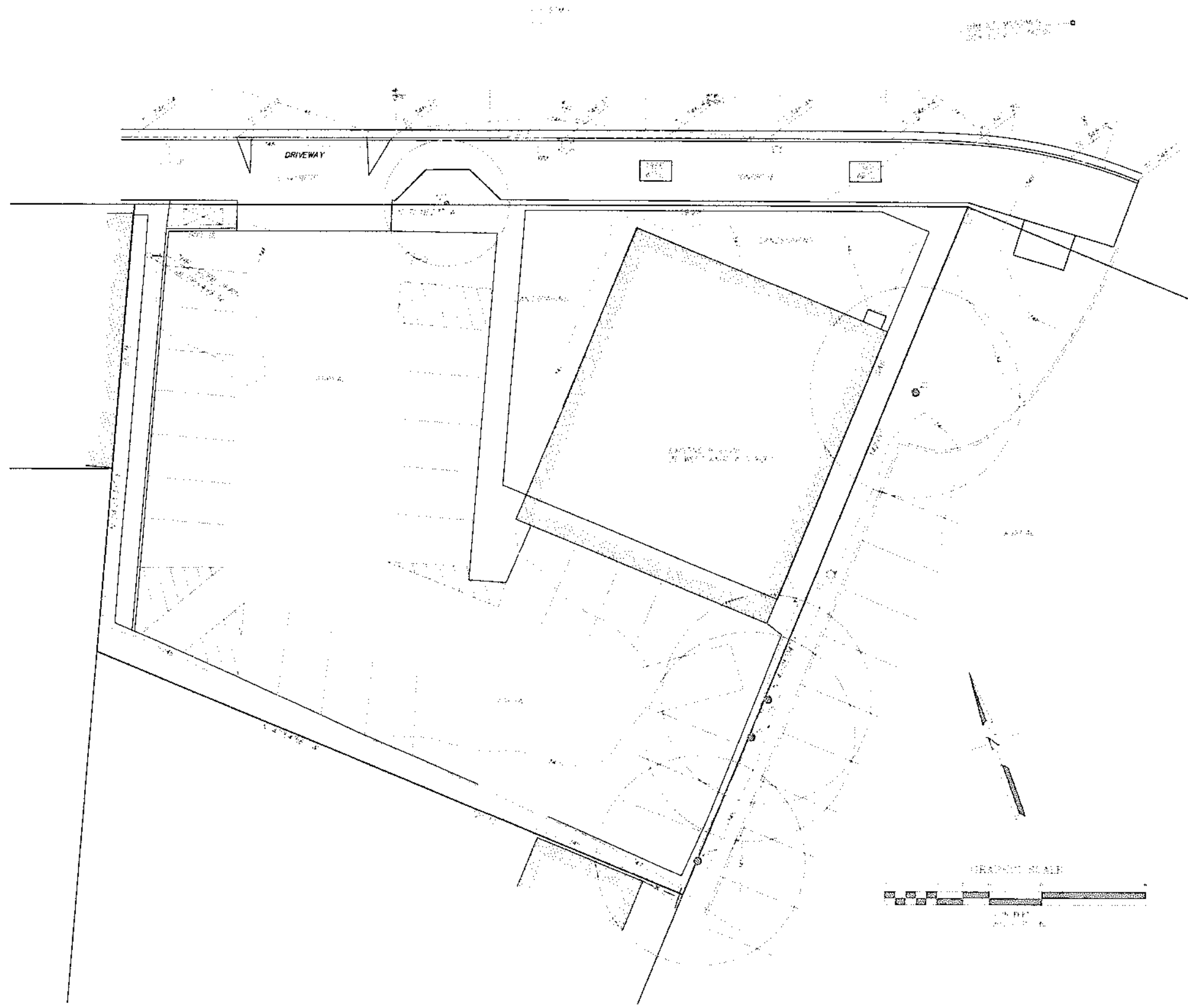
ARCHITECT

NICHOLS • NAYLOR
 ARCHITECTS
 10459 SOUTH 1300 WEST SUITE 201
 SOUTH JORDAN, UTAH 84095 (801) 487-3330



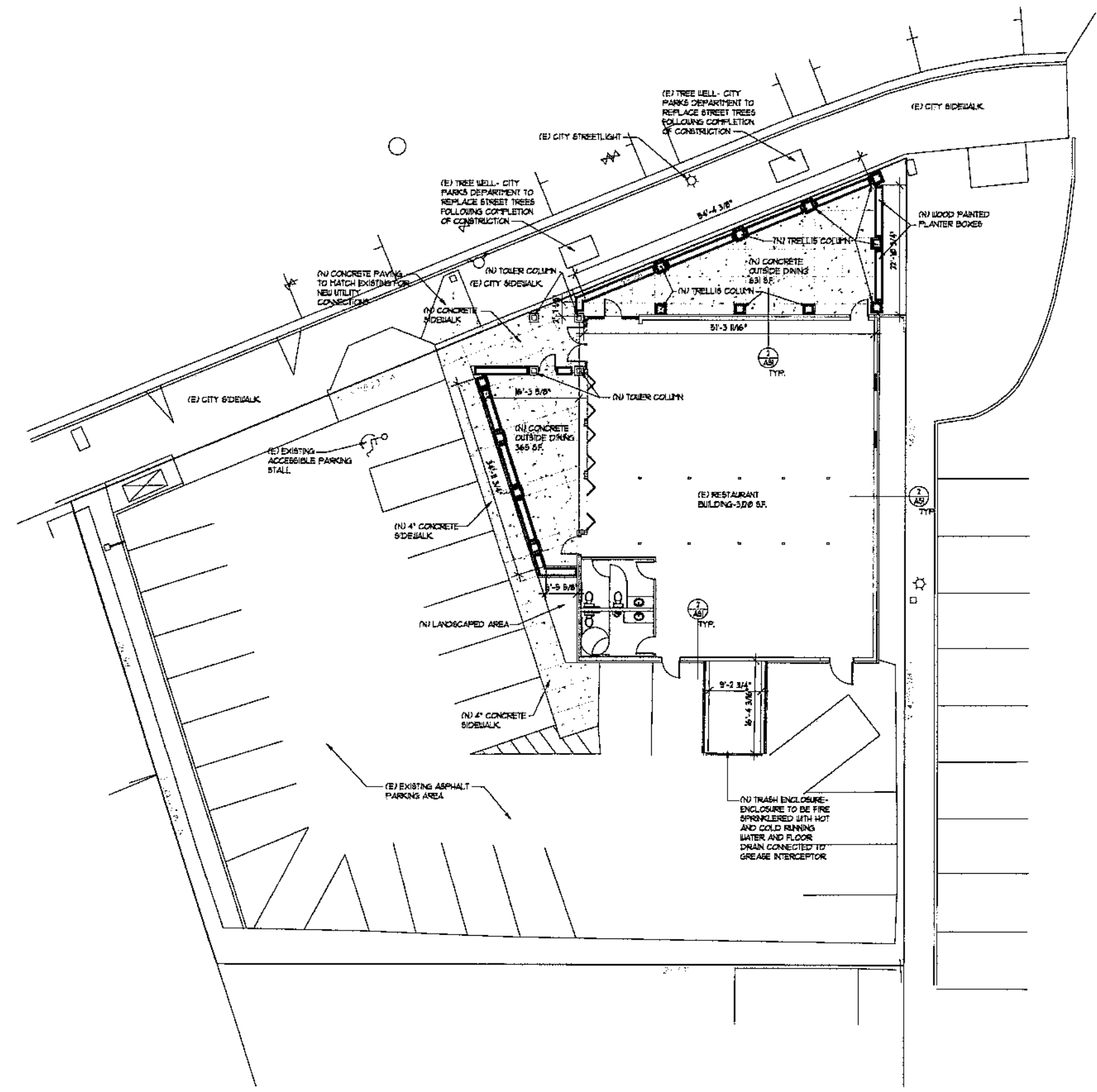
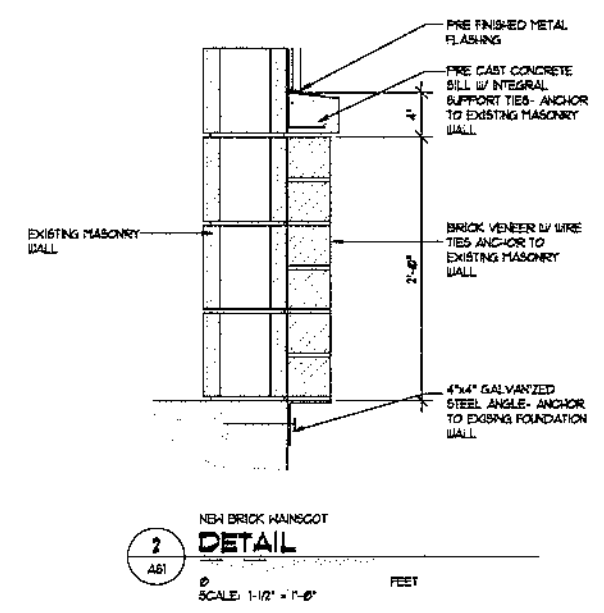
DATE
 1 DECEMBER 2016

SHEET NUMBER
AS0.1



EXISTING
SITE PLAN
 AS0.1
 SCALE: 1" = 10'-0" FEET

PROJECT TABULATION		
ITEM	EXISTING AREA	PROPOSED AREA
UNCOVERED PARKING	4,343 SF.	4,710 SF.
SIDEWALKS PATIOS DRIVEWAYS	5,103 SF.	6,298 SF.
LANDSCAPING	7,023 SF.	1,807 SF.
BUILDING	3,220 SF.	3,220 SF.
TRASH ENCLOSURE	0 SF.	173 SF.
TOTAL LOT AREA	19,389 SF.	19,389 SF.



1
 AS1
 SITE PLAN
 SCALE: 1" = 10'-0"
 FEET



REVISIONS

SHEET TITLE
 SITE PLAN

PROJECT/OWNER
 30 WEST ANGELA ST.
 REMODEL
 30 WEST ANGELA ST.
 PLEASANTON CA
 MCCOLM COMMERCIAL REAL ESTATE

ARCHITECT

NICHOLS • NAYLOR
 ARCHITECTS
 10459 SOUTH 1300 WEST SUITE 201
 SOUTH JORDAN, UTAH 84095 (801) 487-3330



DATE
 1 DECEMBER 2016

SHEET NUMBER
 AS1

REVISIONS

SHEET TITLE

UTILITY PLAN

PROJECT/OWNER

30 WEST ANGELA ST.
REMODEL
30 WEST ANGELA ST.
PLEASANTON, CA
MCCOLM COMMERCIAL REAL ESTATE

ARCHITECT

NICHOLS • NAYLOR
ARCHITECTS
10459 SOUTH 1300 WEST SUITE 201
SOUTH JORDAN, UTAH 84095 (801) 487-3330

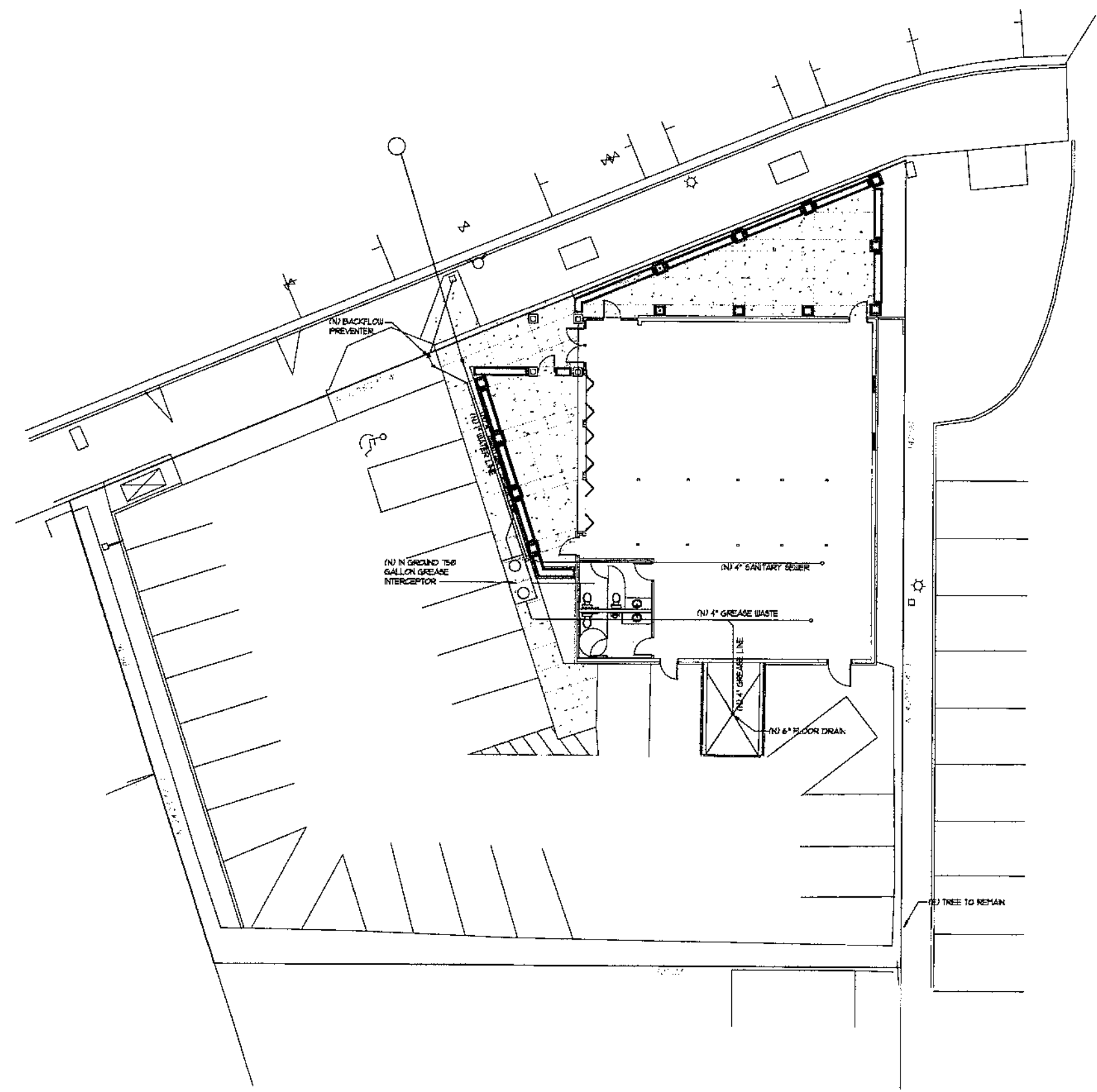


DATE

1 DECEMBER 2016

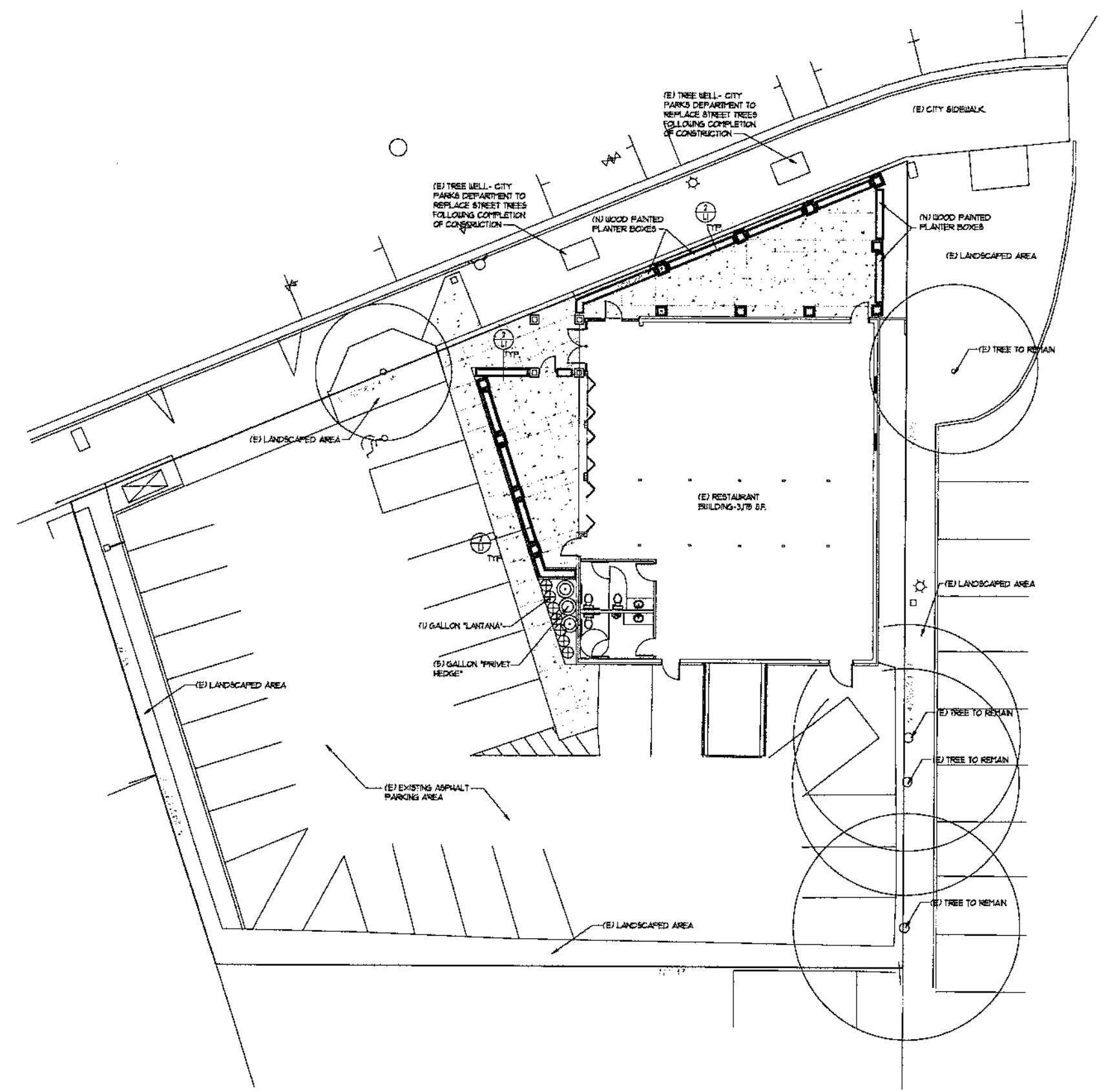
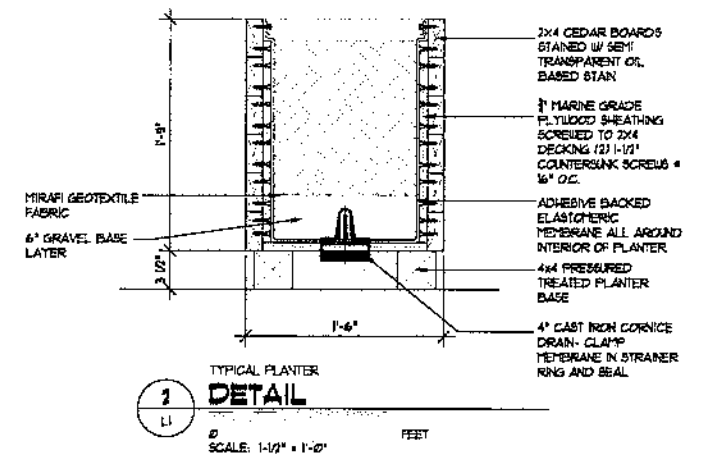
SHEET NUMBER

UP-1



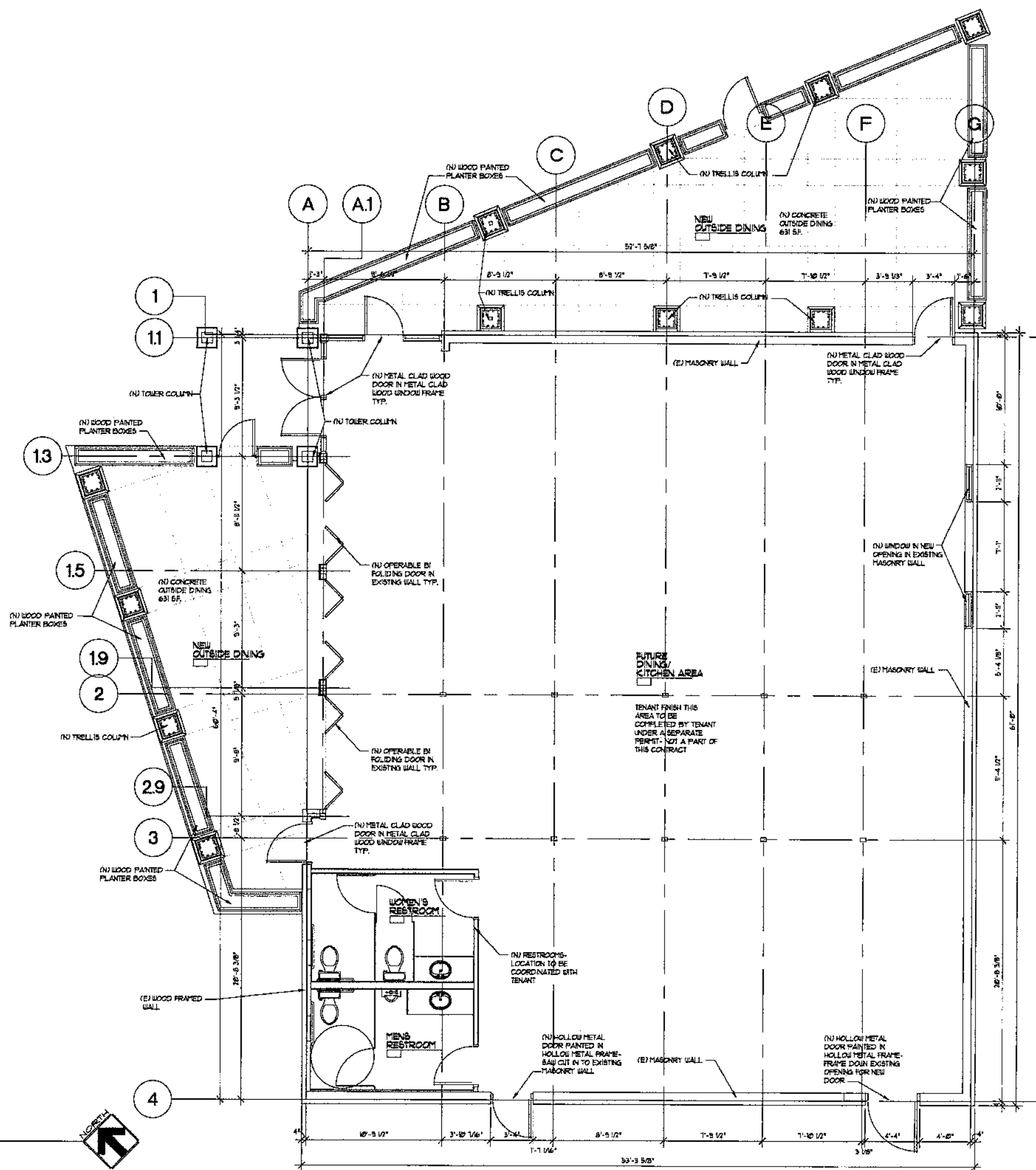
UTILITY PLAN
UP-1
SCALE: 1" = 10'-0"
FEET





LANDSCAPE PLAN
SCALE: 1" = 10'-0" FEET





1 FLOOR PLAN
SCALE: 1/4" = 1'-0"
8 FEET



REVISIONS

SHEET TITLE

EXTERIOR ELEVATIONS

PROJECT/OWNER

30 WEST ANGELA ST.
REMODEL
30 WEST ANGELA ST.
PLEASANTON CA,
MCCOLM COMMERCIAL REAL ESTATE

ARCHITECT

NICHOLS • NAYLOR
ARCHITECTS
10459 SOUTH 1300 WEST SUITE 201
SOUTH JORDAN, UTAH 84095 (801) 487-3330

DATE

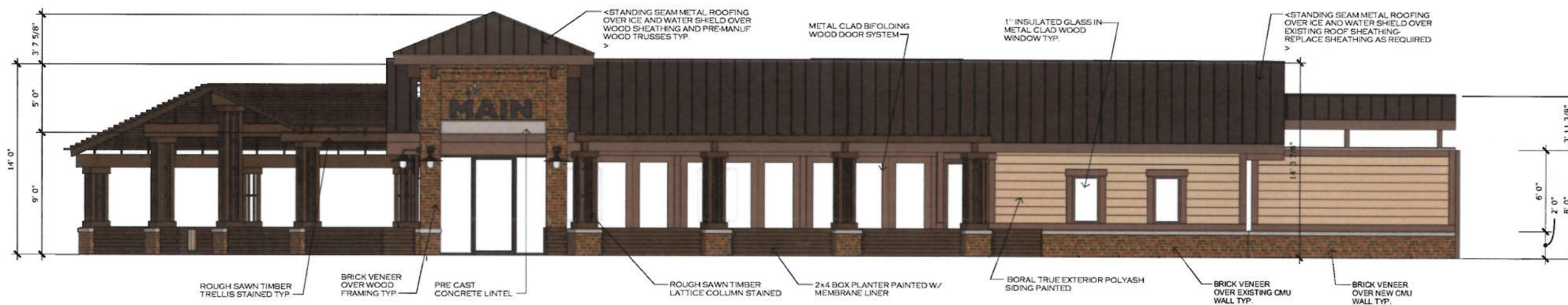
4 JANUARY 2017

SHEET NUMBER

A2



1 East Elevation
A2 1/4" = 1'-0"



2 West Elevation
A2 1/4" = 1'-0"



3 Building Section
A2 1/4" = 1'-0"

REVISIONS

SHEET TITLE

EXTERIOR ELEVATIONS

PROJECT/OWNER

30 WEST ANGELA ST.
REMODEL

30 WEST ANGELA ST.
PLEASANTON CA.
MCCOLM COMMERCIAL REAL ESTATE

ARCHITECT

NICHOLS • NAYLOR
ARCHITECTS

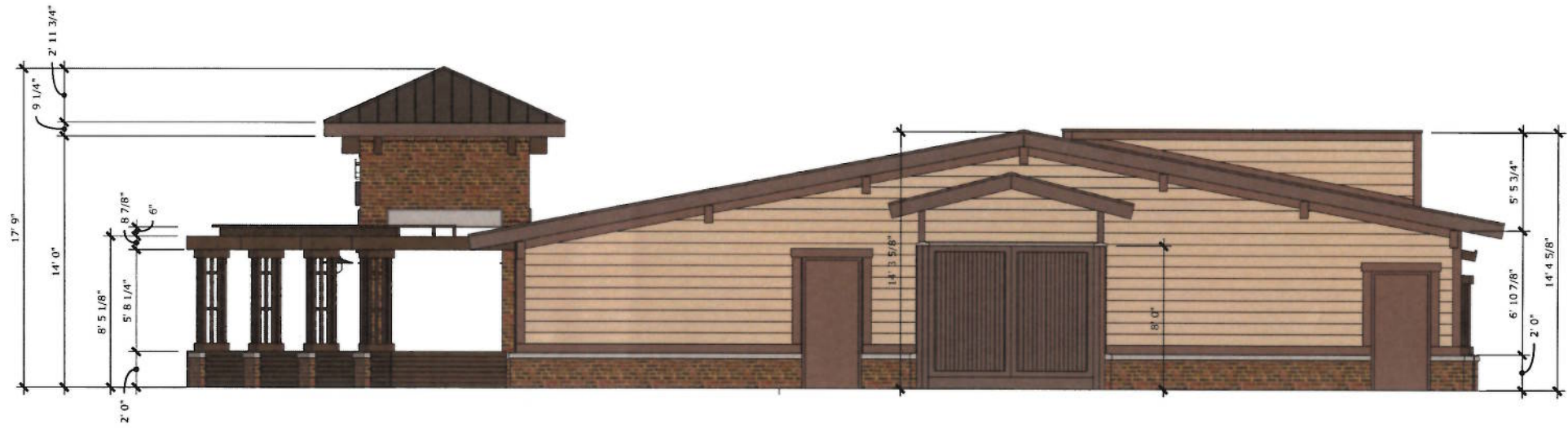
10459 SOUTH 1300 WEST
SOUTH JORDAN, UT 84095 (801) 487-3330
SUITE 201 (801) 487-3330

DATE

4 JANUARY 2017

SHEET NUMBER

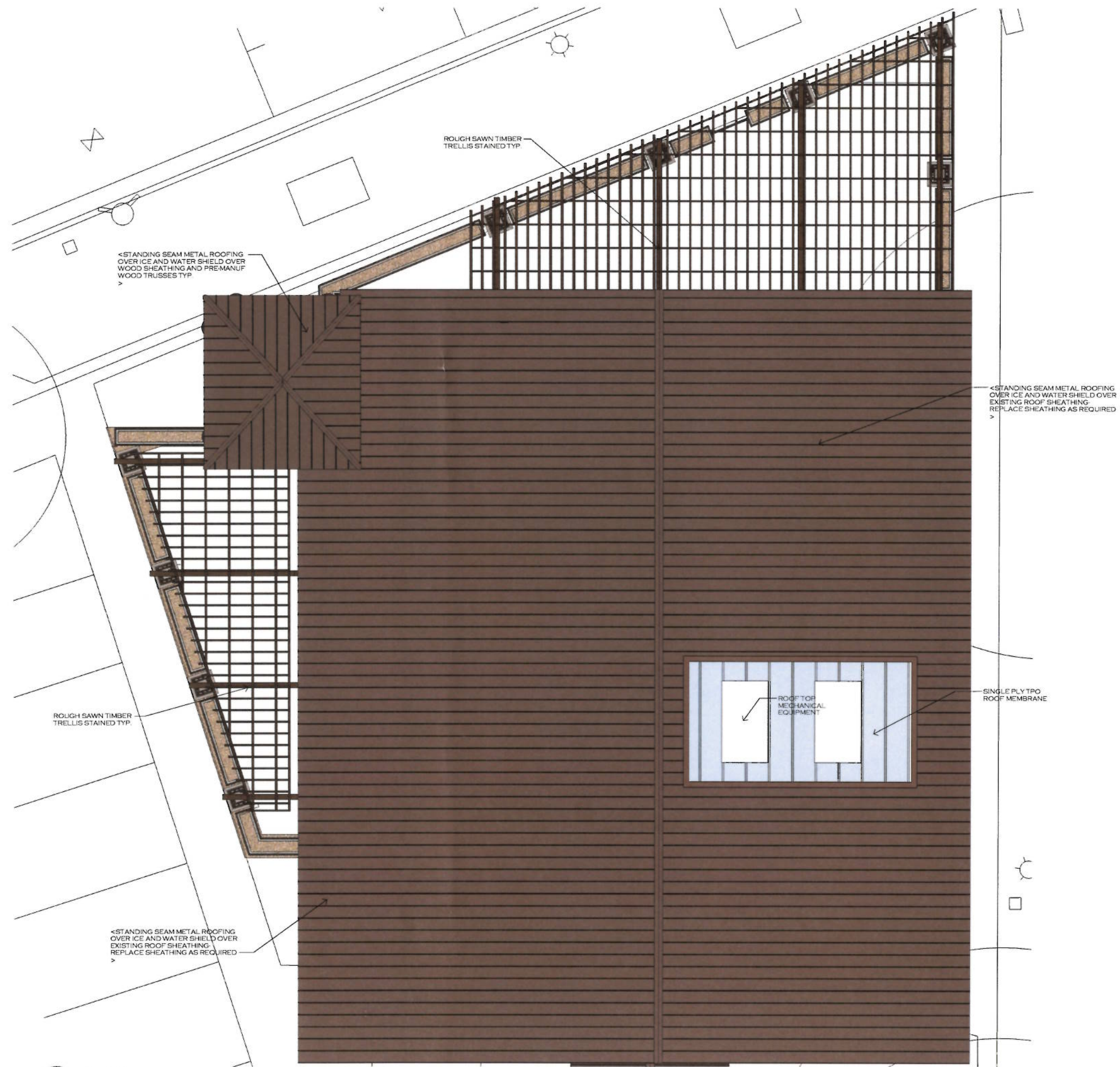
A3



1 South Elevation
A3 1/4" = 1'-0"



2 North Elevation
A3 1/4" = 1'-0"



1 Roof Plan
A4 1/4" = 1'-0"

30 WEST ANGELA ST.
REMODEL
30 WEST ANGELA ST.
PLEASANTON, CA
MICCOLM COMMERCIAL REAL ESTATE

NICHOLS • NAYLOR
ARCHITECTS
10459 SOUTH 1300 WEST SUITE 201
SOUTH JORDAN, UTAH 84095 (801) 487-3330



4 JANUARY 2017

A4