

Sun Flower Academy CUP Request

Sun Flower Academy was founded by Yvonne Yaheng Zhao in 2008. Sun Flower Academy currently occupies 8,599 sf at 6693 Owens Dr. in Pleasanton, CA. Sun Flower Academy offers Chinese cultural programs open to all, but aimed primarily at 2nd generation Chinese -Americans whose parents want their children to enjoy and retain the rich Chinese culture not readily available in local schools.

Students come primarily from Tri-Valley area, but also some from as far as Fremont in the south to Concord in the north. Students are dropped off and picked up by their parents. Students are between 5-10 years old.

Programs include Chinese Language I, II, III, IV, V, Chinese Conversation, Chinese History, Chinese Culture, Abacus, Math Olympiads, Chinese Chess, Drawing Class, Beginning Kungfu and Introduction to Chinese Dance. Classes would be taught seven (7) days a week and start at 11:30AM and go until 7:00PM.

Beginning Kungfu and Introduction to Chinese Dance are both meant for students to gain awareness of the deep cultural significance each art has played in the long history of China and are not competition based. The Beginning Kungfu and Introduction to Chinese Dance classes are part of a complete program that gives students a comprehensive education in Chinese culture, academics and arts. *No amplified music.*

Sun Flower Academy applied with the California Department of Education to be designated as a Heritage School and was approved. Sun Flower Academy is now applying for a Conditional Use Permit to operate as a Heritage School in Pleasanton.

Back-to-back Sessions. Students can attend back-to-back sessions. Each time slot in the schedule shows which classes are offered at that time. They are separate classes, not combined.

Floor plan. See attached *NO T.I.'S proposed.*

Verification for State License. A Heritage School, as defined by California's Education Code (EC) Section 33195.4, is exempt from licensure by the State Department of Social Services as a child day care center.

Parking Requirements. All students will be below Grade 6 since all students will be between the ages of 5-10 years old. Sun Flower Academy has 32 unreserved parking spots as part of their lease at 6693 Owens Dr. The adjacent tenant is Protection One Security Services and their business hours are from 8:00AM-5:00PM. Depending on the time and class schedule, there will be a minimum of four (4) teachers and a maximum of ten (10) teachers on-site at one time.

64 total spaces on-site

RECEIVED

FEB 28 2017

CITY OF PLEASANTON
PLANNING DIVISION

P/6-1845

EXHIBIT B

Sun Flower Weekday Schedule (Proposed)

Time/Date	Monday	Tuesday	Wednesday	Thursday	Friday
11:30 - 2:00	K: Math Abacus	K: Math Abacus	K: Math Abacus	K: Math Abacus	K: Math Abacus
2:00 - 2:30	Break	Break	Break	Break	Break
2:30 - 3:15	K:Chinese Early Bird : Homework	K:Chinese Early Bird : Homework	K:Chinese Early Bird : Homework	K:Chinese Early Bird : Homework	K:Chinese Early Bird : Homework
3:15 - 3:30	Snack	Snack	Snack	Snack	Snack
3:30 - 4:30	Chinese 1,2,3,4,5 Homework K: Phonics Chinese Dance	Chinese 1,2,3,4,5 Homework K: Phonics Chinese Kungfu	Chinese 1,2,3,4,5 Homework K: Phonics Chinese Dance	Chinese 1,2,3,4,5 Homework K: Phonics Chinese Kungfu	Chinese 1,2,3,4,5 Homework K: Phonics Chinese Kungfu
4:30 - 5:00	Homework Abacus Math Chinese Dance Chinese Chess	Homework Abacus Math Math Olympiads Chinese Kungfu	Homework Abacus Math Drawing Chinese Dance	Homework Abacus Math Writing Chinese Kungfu	Abacus Math English Chinese Kungfu
5:00 --- 5:30	Abacus Math English Chinese Chess Chinese Dance	Abacus Math English Math Olympiads Chinese Kungfu	Abacus Math English Drawing Chinese Kungfu	Abacus Math English Writing Chinese Kungfu	Chinese Craft/ Science
5:30 --- 6:00	Reading Nursery rhyme Chinese Dance Goodbye	Reading Chinese Song Chinese Kungfu Goodbye	Reading Nursery rhyme Chinese Kungfu Goodbye	Reading Chinese Song Chinese Kungfu Goodbye	Summarize Goodbye
6:00 --- 7:00	Free Play Goodbye	Free Play Goodbye	Free Play Goodbye	Free Play Goodbye	Free Play Goodbye

Chinese Class(1&2&3&4&5): 5-10 students

Abacus: 5-10 students

Math: 5-10 Students

English: 10-15 students

Math Olympiads: 10-15 students

Chinese Chess: 10-15 students

Chinese Dance: 5-10 students

Chinese Kungfu: 5-10 students

K Phonics: 10-15 students

Early Birds: 10 students

K = Kinders (arrive between 11:30 a.m. & 1:00 p.m.)

Early Birds (arrive between 2:00 p.m. & 2:30 p.m.)

Regulars (arrive between 2:50 p.m. & 3:30 p.m.)

Weekend Schedule

(Proposed)

Time/Date	Saturday		Sunday
9:00 - 9:50	Chinese/Chinese Dance		
9:50 - 10:00	Break		
10:00 - 10:50	Chinese/Chinese Dance		
10:50 - 11:00	Break		
11:00 - 11:50	Chinese/Chinese Dance		
11:50 - 12:00	Clean up		
13:00 - 13:50	Abacus/Kungfu	13:00 - 13:50	Kungfu
13:50 - 14:00	Break	13:50 - 14:00	Break
14:00 - 14:50	Abacus/Kungfu	14:00 - 14:50	Dance
14:50 - 15:00	Break	14:50 - 15:00	Break
15:00 - 15:50	Math Olympiads/ Kungfu	15:00 - 15:50	Dance
15:50 - 16:00	Break	15:50 - 16:00	Clean up
16:00 - 16:50	Speech / Kungfu		
16:50 - 17:00	Clean up		

Chinese: 5-10 students

Math Olympiads: 10-15 Students

Chines Dance: 5-10 Students

Abacus: 5-10 students

Speech: 10-15 students

Chinese Kungfu: 5-10 students

Sun Flower Summer Camp Schedule (Proposed)

	Monday	Tuesday	Wednesday	Thursday	Friday
9:00 -- 9:30	Welcome				
9:30 -- 10:00	Reading & Journal	Origami Craft-Arts	Movie	Reading & Journal	Field Trip
10:00--10:30	Recess Snack	Recess Snack		Recess Snack	
10:30--11:30	Weekly Themed Swimming	Weekly Themed Swimming		Weekly Themed Swimming	
11:30--12:00	Rest	Rest		Rest	
12:00--13:00	Lunch & Rest	Lunch & Rest	Lunch & Rest	Lunch & Rest	
13:00--14:00	Chess Specialty Camp Chinese Dance	Clay Art Specialty Camp Chinese Kungfu	Math Olympiads Specialty Camp Chinese Kungfu	English Writing Specialty Camp Chinese Kungfu	Rest
14:00--16:00	Chinese Abacus Math English Specialty Camp	Chinese Abacus Math English Specialty Camp	Chinese Abacus Math English Specialty Camp	Chinese Abacus Math English Specialty Camp	Specialty Camp
16:00--16:30	Recess Snack	Recess Snack	Recess Snack	Recess Snack	Recess Snack
16:30--17:00	Nursery rhyme Sing	Group Game Time	Nursery rhyme Sing	Group Game Time	Review Summarize
17:00--19:00	Free Play Goodbye				

Reading & Journal, Origami Craft-Arts, Nursery rhyme Sing, Weekly Themed: by Grades or Groups
 Chinese Chess: 10-15 Students
 Chinese: 5-10 students
 Specialty Camp: 10-15 students

Math Olympiads: 10-15 Students
 Abacus: 5-10 students
 Chinese Dance: 5-10 Students

Swimming: Drop off at swimming school
 English Writing: 10-15 Students
 English: 5-10 students

Chinese Kungfu: 5-10 students

Weekday List drop-off/pick-up

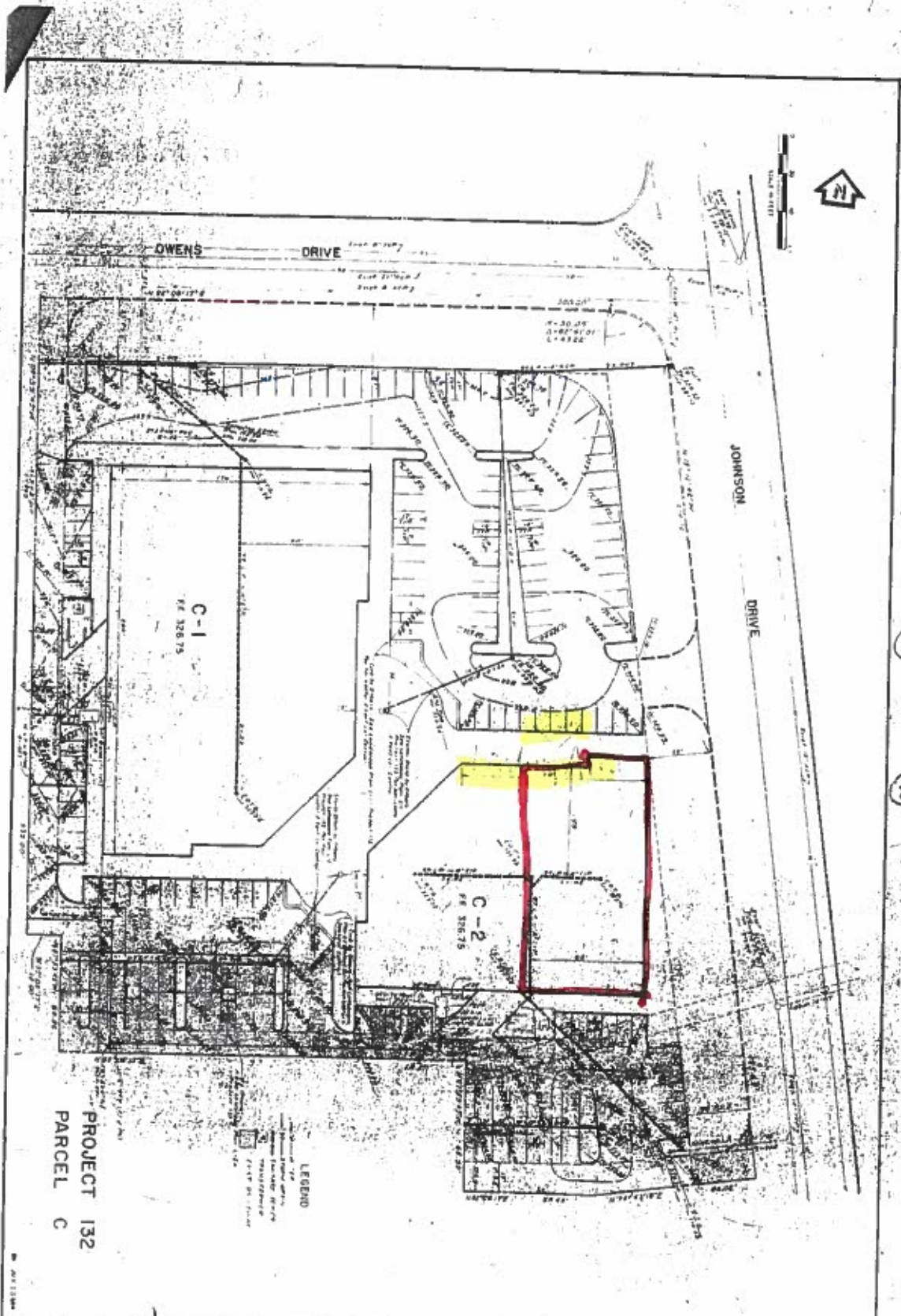
	Drop-off		Existing	Proposed
	Parents	Van Pick-up		
Kinder: 11:30-13:00	2 Parents (< 5 Kids)	8 Vans (20 Kids)	Max Staffs: 1-2 Max Kids: 5	Max Staffs: 3 Max Kids: 20
Early Bird: 14:00-14:30	1 Parents (< 5 Kids)	4 Vans (10 Kids)	Max Staffs: 2-3 Max Kids: 10	Max Staffs: 4-5 Max Kids: 30
Regular: 14:50-15:30	2 Parents (< 5 Kids)	10 Vans (50 Kids)	Max Staffs: 4-5 Max Kids: 30	Max Staffs: 10-12 Max Kids: 80-100
17:00-19:00			<p>Pick up Evenly spread out between 5pm-7pm</p> <p>5:00pm-5:30pm: 5</p> <p>5:30pm-6:00pm: 5</p> <p>6:00pm-6:30pm: 10</p> <p>6:30pm-7:00pm: 10</p>	<p>Pick up Evenly spread out between 5pm-7pm</p> <p>5:00pm-5:30pm: 10 (10 students need drop off back home by 2 school vehicles)</p> <p>5:30pm-6:00pm: 10 (10 students need drop off back home by 2 school vehicles)</p> <p>6:00pm-6:30pm: 15-20 (15-20 students need drop off back home by 3 school vehicles)</p> <p>6:30pm-7:00pm: 15-20 (15 students need drop off back home by 2 school vehicles)</p> <p>7:00pm-7:30pm: 15-20 (10 students need drop off back home by 2 school vehicles)</p>

Summer List *drop-off/pick-up*

	Existing	Proposed
09:00-10:00	<p>Drop off Evenly spread out between 9am-10am</p> <p style="text-align: center;">9:00am-9:30am: 10</p> <p style="text-align: center;">9:30am-10:00am: 10-20</p>	<p>Drop off Evenly spread out between 9am-10am</p> <p style="text-align: center;">9:00am-9:30am: 15</p> <p style="text-align: center;">9:30am-10:00am: 20-25</p>
08:00-19:00	<p>Max Staffs: 3-4</p> <p>Max Kids: 20-30</p>	<p>Max Staffs: 6-7</p> <p>Max Kids: 50</p>
16:00-19:00	<p>Pick up or Drop off Evenly spread out between 5pm-7pm</p> <p style="text-align: center;">4:00pm-5:00pm: 5</p> <p>(5 students need drop off back home by 1 school vehicle)</p> <p style="text-align: center;">5:00pm-5:30pm: 5</p> <p>(5 students need drop off back home by 1 school vehicles)</p> <p style="text-align: center;">5:30pm-6:00pm: 5</p> <p>(5 students need drop off back home by 1 school vehicles)</p> <p style="text-align: center;">6:00pm-6:30pm: 10</p> <p style="text-align: center;">6:30pm-7:00pm: 5</p>	<p>Pick up or Drop off Evenly spread out between 5pm-7pm</p> <p style="text-align: center;">4:00pm-5:00pm: 10</p> <p>(10 students need drop off back home by 2 school vehicles)</p> <p style="text-align: center;">5:00pm-5:30pm: 10</p> <p>(10 students need drop off back home by 2 school vehicles)</p> <p style="text-align: center;">5:30pm-6:00pm: 10</p> <p>(10 students need drop off back home by 2 school vehicles)</p> <p style="text-align: center;">6:00pm-6:30pm: 10</p> <p>(10 students need drop off back home by 2 school vehicles)</p> <p style="text-align: center;">6:30pm-7:00pm: 10</p> <p>(5 students need drop off back home by 1 school vehicles)</p>

Vehicles List:

- | | |
|-------------------------|-----------------|
| 1. Ford Econo (Gold) | over the night |
| 2. Ford Econo (Gray) | over the night |
| 3. GMC Savana | over the night |
| 4. Toyota Sienna (Gold) | over the night |
| 5. Toyota Sienna (Gray) | operating hours |
| 6. Honda Odyssey | over the night |
| 7. Mazda Mpv | over the night |
| 8. Nissan Quest | operating hours |
| 9. Honda Accord | over the night |
| 10. Lexcus Rx350 | operating hours |



- ① students escorted by staff in/out
- ② signal in/out

PROJECT 132
PARCEL C

SITE DEVELOPMENT PLAN

PLEASANTON PARK
PARCEL C, PARCEL MAP No. 4787
PLEASANTON, CALIFORNIA



BISSELL & KARN, INC.
CIVIL ENGINEERS
3321 WILSON ST., SAN LEANDRO, CALIF. 94577
415/488-2255

Kungfu & Dance

Leased

Gray area is the adjacent tenant

