

**DUSTY CARS LLC  
3724 STANLEY BLVD B  
PLEASANTON, CA 94566  
TEL: 925-417-0118**

Hello:

I own the building at 3440 Stanley Blvd. I am a licensed California car dealer, Dusty Cars LLC, and I am currently located at a leased space at 3724 Stanley Blvd Suite B, a few doors away. We are simply moving our existing dealership from 3724 Stanley Blvd Suite B to 3440 Stanley Blvd Suites J and K. We plan to stock about the same number of cars (10) in the showroom. We are not hiring anyone new, just myself and my office manager. We will be open Monday through Friday 9 to 5. We have ample parking in front of the building for our purposes, as our business is mainly overseas and out of state. Very few customers actually ever visit our premises. We deal in classic European sports cars and we do a low volume of business, usually less than 10 cars a month.

Best Regards

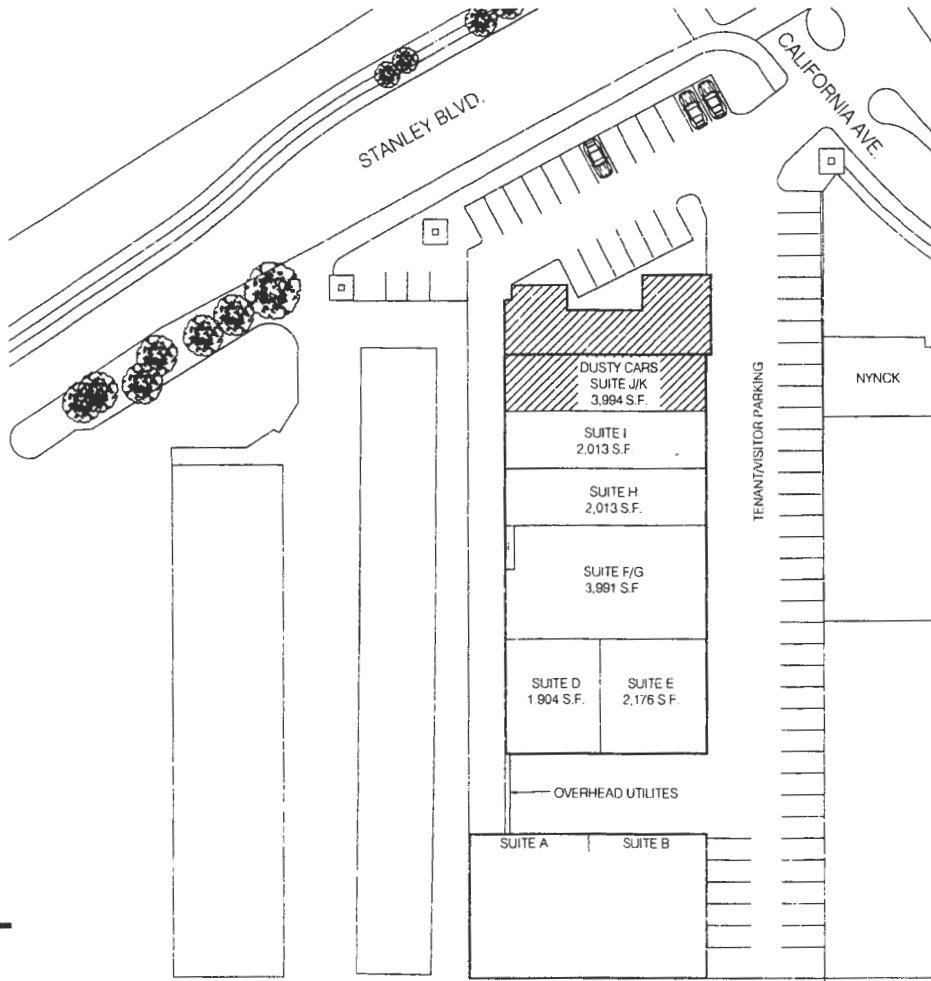
Douglas Berry  
Dusty Cars LLC

PI7-0154

**RECEIVED**

MAR 06 2017

CITY OF PLEASANTON BLDG  
**EXHIBIT B**

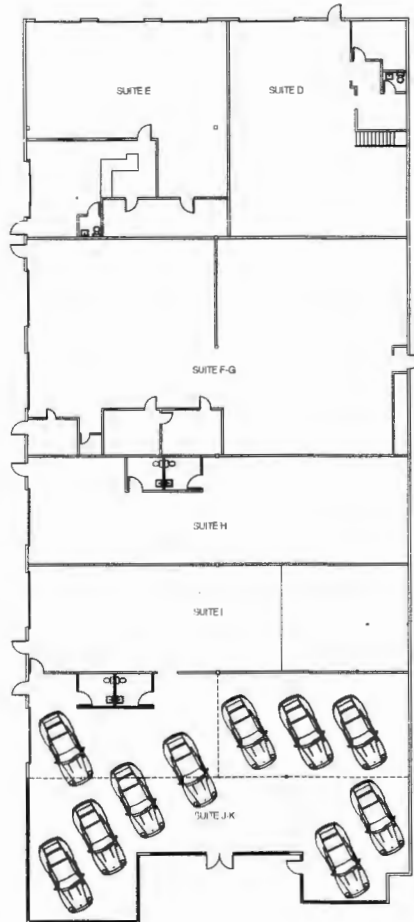


PARKING ALLOCATION	
BUILDING AREA - 22,158 S.F.	
SUITE A	2,997 S.F.   3,007 RSF
SUITE B	2,997 S.F.   3,007 RSF
SUITE D	1,904 S.F.   1,910 RSF
SUITE E	2,176 S.F.   2,183 RSF
SUITE FG	3,991 S.F.   4,004 RSF
SUITE H	2,013 S.F.   2,020 RSF
SUITE I	2,013 S.F.   2,020 RSF
SUITE JK	3,994 S.F.   4,007 RSF
PROJECT DATA	
BUILDING TYPE	#-B
ZONING	C-S
APN	946-1680-14-2

**DUSTY CARS  
SITE PLAN**  
3440 STANLEY BLVD  
PLEASANTON, CA 94566  
Job No. 16-008  
DATE 09/26/16

**Hopkins & Wall**  
ARCHITECTURE • INTERIOR DESIGN  
7901 STONERIDGE DRIVE STE 350  
PLEASANTON, CA 94588  
925.225.0445  
FAX 925.225.0492

P17-0154



SUITE A	2,007 S.F.	1	3,007 RSP
SUITE B	2,907 S.F.	1	3,007 RSP
SUITE D	1,904 S.F.	1	1,010 RSP
SUITE E	2,178 S.F.	2	2,183 RSP
SUITE FG	3,391 S.F.	4	4,054 RSP
SUITE H	2,013 S.F.	2	2,020 RSP
SUITE I	2,013 S.F.	2	2,020 RSP
SUITE JK	3,994 S.F.	1	4,007 RSP
<b>TOTAL S.F.</b>	<b>22,156 S.F.</b>		

SCALE  
 0 10 20  
**FIRST FLOOR PLAN**

**DUSTY CARS  
 FLOOR PLANS**

3440 STANLEY BLVD  
 PLEASANTON, CA 94566  
 Job No: 16-006  
 DATE: 09.25.16

**Hopkins & Wall**

ARCHITECTURE | INTERIOR DESIGN  
 7001 STONERIDGE DRIVE, STE 550  
 PLEASANTON, CA 94588  
 925-225-0445  
 FAX 925-225-0482