

Narrative for auto repair shop

Tri Valley Auto Service is a small auto repair shop. That will be mainly do check and smog fail repair. Secondary works will be tune-up. Brakes and maintenance. Used oil and used coolant container will be inside the upper left corner of the repair shop. Anti-spillage containment will be underneath the containers.

There are maximum 2 employees on duty and hours of operation are from 9am-5pm.

All repair works will be done inside the shop. No repair work will be done outside the shop

Site uses: Auto repair shop, convenience store , and self- service gas- station

There are maximum 21 parking spots in the site.


Parking uses:

Repair shop maximum use 10 parking spots

Convenience store use 3 parking spots

Self- service gas station use the spot on the fuel dispensers

There will be no future plan

APPROVED
PLEASANTON PLANNING COMMISSION
BY 
DATE 10/24/18

RECEIVED
SEP 04 2018
CITY OF PLEASANTON
COMMUNITY DEVELOPMENT

Description of all existing operation

On the site, there is auto smog check station , convenience store and self service shell gas station.

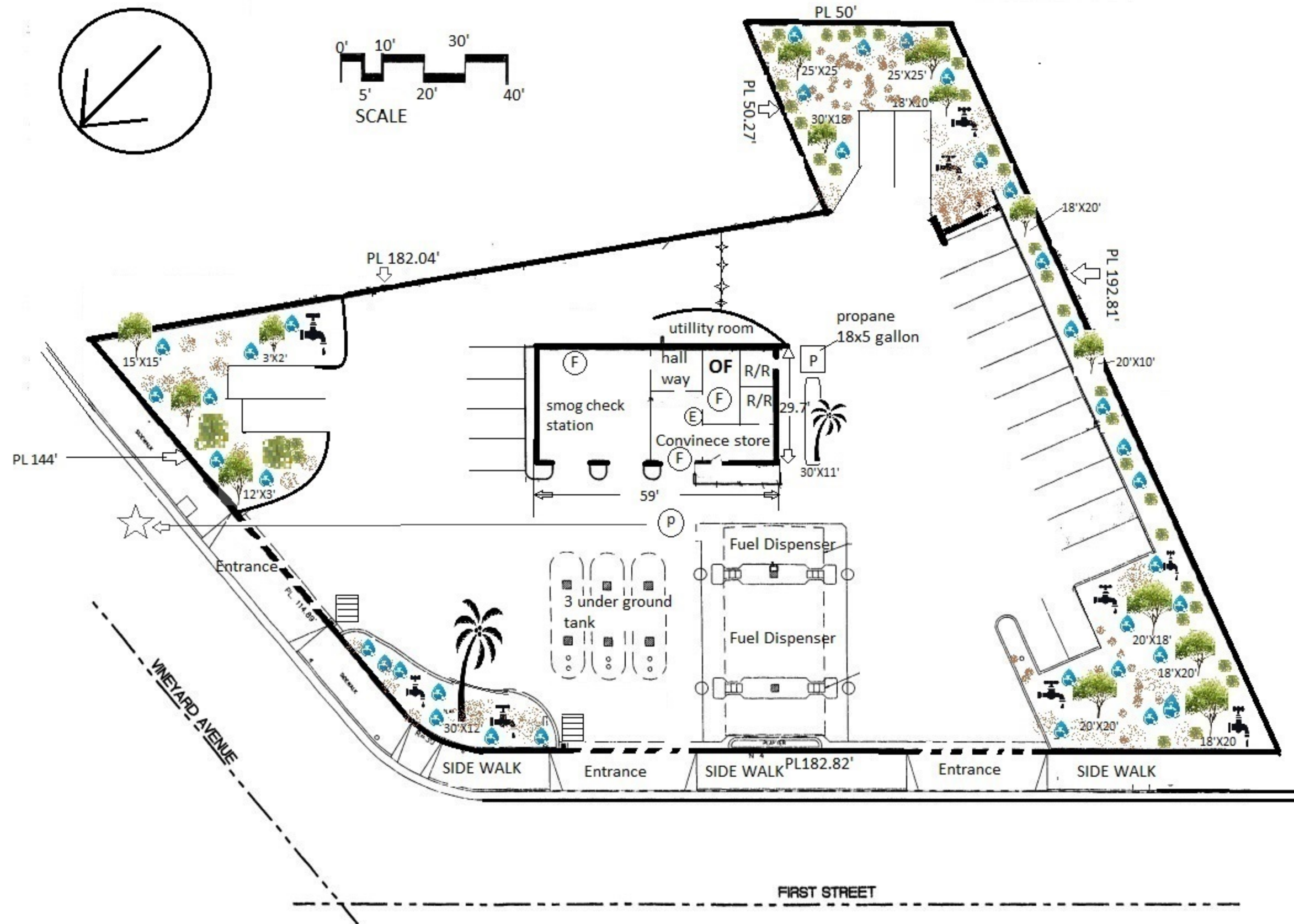
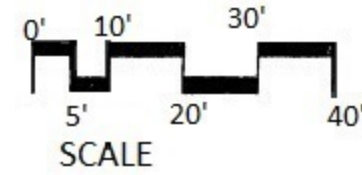
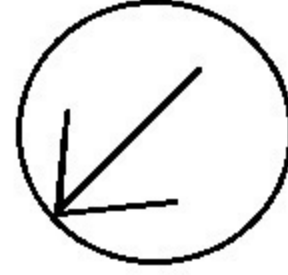
Smog check station , about 5-8 cars come for smog check per day, the site currently have 21 parking spot for costumers.

Convenience store. Small mini mart store sells snack, beverage, cigarette and pay for gas for self service gas station.


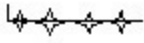











BUSINESS NAME: TRI VALLEY AUTO SERVICE

BUSINESS ADDRESS: 4212 FIRST STREET

North




MAP SYMBOLS

-  STORM DRAIN
-  FENCE
- PL** PROBERTY LINE DIMENSION
-  FIRE EXTINGUISHER
-  ELECTRICAL PANEL
-  EMERGENCY PUMP SHUT OFF
-  STAGING AREA EVACUATION
-  PROBERTY LINE
-  PALM TREE
-  SPRINKER VALVE
-  OAK TREE
-  BUSH TREE
-  SPRINKER
-  GRASS

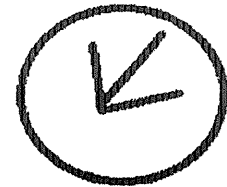
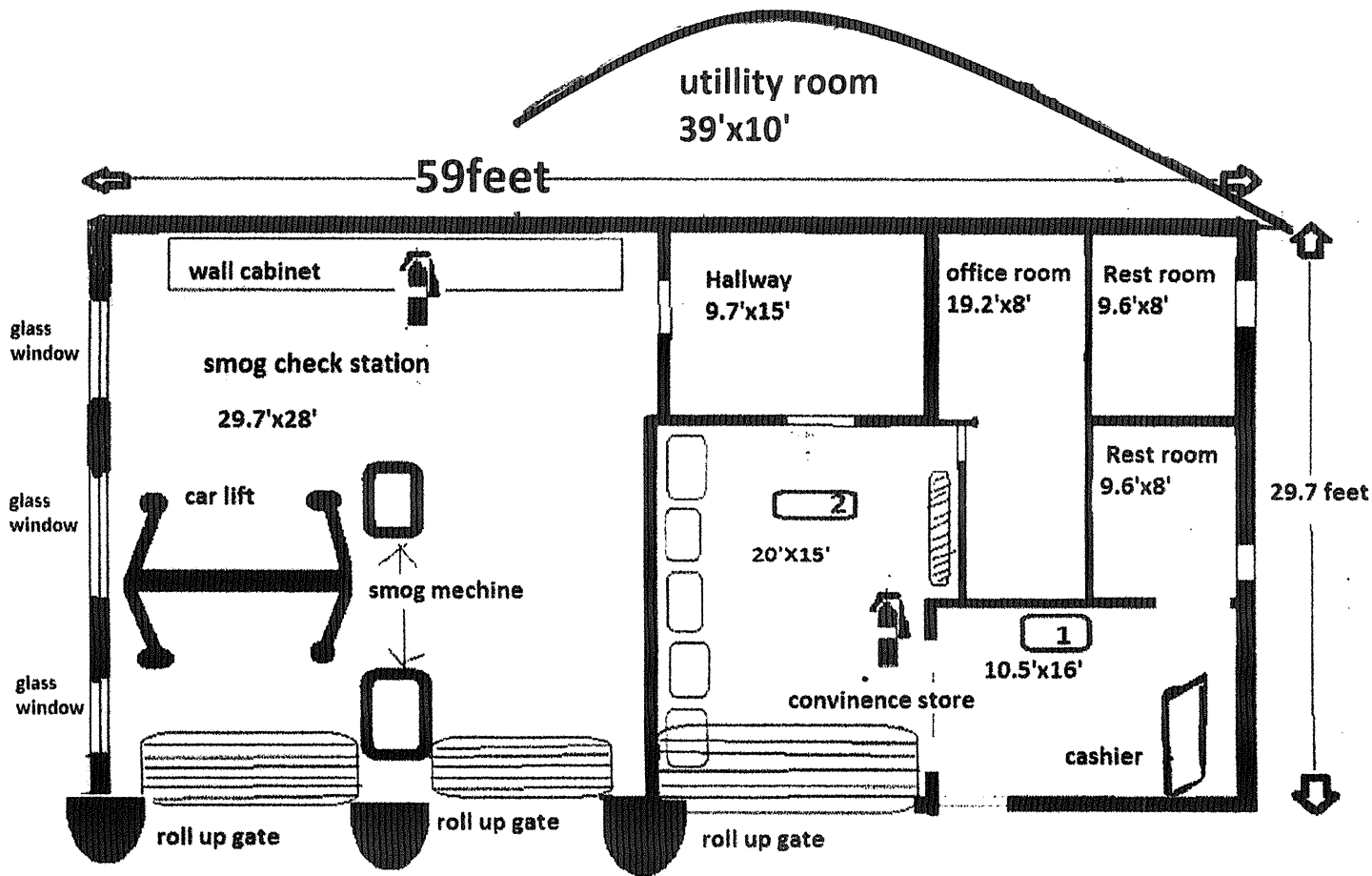
Data table

the building total	1752.3 sqft
smog check station	831.6sqft
convenience store	468 sqft
Rest Room 1	76.8 sqft
Rest Room 2	76.8 sqft
office	153.6 sqft
Hall way	145.5 sqft

 There are totally 21 parking in the site

Land Scape Data Table

- 2 Palm Trees**
- 14 Oak Trees**
- 53 Bush Trees (size 4'x2.5')**
- 34 water sprinklers**
- 9 water valves**



North

