



SAFARI KIDSM PLEASANTON
5627, Gibraltar Drive, Suite 200
E-Mail: safarikidpleasanton@gmail.com
Phone: (925) 264 9679
www.safariKidUSA.com

P18-0240 (CUP) & P18-0241 (DR)
RECEIVED November 8, 2018
EXHIBIT B

200 Old Bernal Ave
Pleasanton, CA 94566

**RE: Narrative for Safari Kid – Application for a Conditional Use Permit
After School Program and Preschool Programs.
4464 Willow Road, Pleasanton**

INTRODUCTION

The purpose of this document is to give the Pleasanton City Planning Department a view into the proposed Preschool / Heritage After School Facility at 4464 Willow Road.

Safari Kid is an existing Heritage School that provides an after-school program. It is currently located at 5627 Gibraltar Dr. The existing programs will move to the new building and a new Preschool program will be added. This will allow us to grow the program to 325 students.

A “Heritage” school is defined by the state of California as an educational school that provides cultural educational opportunities to children between 4.5 years and 18 years of age to supplement their regular education at other licensed/accredited schools. Safari Kid provides language classes, as well as dance, art and other culturally significant classes for their students. Heritage schools are not required to be licensed by the State.

NEW PRESCHOOL / AFTER SCHOOL FACILITY

The current business is an After School / Heritage Program, established July 2013, at 5627 Gibraltar Drive. We are at capacity at this location. Safari Kid will cease operation at 5627 Gibraltar Drive following the move.

Proposed Project

- Our projected plan is to move over to the new building in late 2018
- The proposed space is approximately ~27,900 square feet in size and is approximately half of the whole building.
- The build-out phase would allow a capacity of 100 preschool students and 225 Heritage/after school students.

OPERATIONS

Chida and Company LLC, DBA Safari Kid Pleasanton, will operate as a franchise of Safari Kid Inc. This is an on-going relationship that was described as part of the 2013 CUP application.

Safari Kid Pleasanton will offer three programs:

1. Preschool Program for students of ages 2 to 5 years old (Year-Round)
2. Heritage School-based After School Program for students in Grades TK - 8 (during Public School Year) (TK = transitional kindergarten).
3. Heritage School-based Summer Program for students in Grades TK - 8 in the upcoming school year (during Public School Summer Break)

As an entire business, our operating hours are 7:30AM to 9:00PM, Monday through Sunday year-round.

Preschool Program

At the new Preschool, we understand that every child has different strengths and levels of learning and believe that while structure is important, it should not hinder growth.



All our programs are Accelerated and Emergent Learning programs. The definition of Accelerated and Emergent Learning goes hand in hand with our mission. Accelerated and emergent learning is the most advanced teaching and learning method in use today. It's a total system for speeding and enhancing both the design process and the learning processes. Based on the latest brain research, it has proven again and again to increase learning effectiveness. Keeping the program emergent is just as key to keep the program current and aligned to children's interests.

Our Pre-school program is for children of ages 2.5 to 5. After 5, the children tend to be in Kindergarten or Transitional Kindergarten and attend Public School.

Our Pre-school Accelerated Learning Programs are designed to provide:

- A positive learning environment
- Collaboration among children
- Contextual learning

The New Preschool offers the following programs:

Accelerated Learning 1 Preschool Program

For children 2.5 years and older. We stimulate their minds with interactive learning, songs, poems, creative play and circle time. Children are introduced to the basic concepts of phonics, numbers, shapes, colors, beginning sounds, reading, logical thinking, tracing, public speaking, math and much more. This program is specifically designed to build a strong foundation for the child.

Accelerated Learning 2 Preschool/Pre-K Program

Children are introduced to Reading, Math, and Science, Social Studies along with Arts & Crafts, Music & Movement and Public Speaking. As they progress through these levels, they are taught advanced concepts of reading, writing, math, critical/logical thinking and much more. Students graduating from this program are fluent readers and have the capacity to do first and/or second grade math and comprehensions depending on their learning abilities.

Operations

Our preschool programs start at 7:30AM and continue until 7:00PM. We have different preschool programs to cater to Parent's needs, which are staggered throughout the day. We have 4 sessions:

- Morning: 7:30AM - 11:30AM
- Afternoon: 12:30PM - 3:30PM
- Evening: 3:45PM - 7:00PM
- Full Day: 8:30AM - 7:00PM

We are planning for a capacity of 100 students. We expect 3 groups of students:

- 50 Full Day students
- 30 students will take 2 sessions
- 20 students will take 1 session only

At full capacity, we expect to have a full-time staff of 13:

- 1 Director
- 1 Office Assistant
- 5 Teachers
- 5 Aides
- 1 Operational Manager

After School Program

This program is expected to have a full capacity of 225 TK-8th Grade school children. This is for the Public-School Year, usually from mid-Aug to end-May.



We offer the following sessions:

1. To accommodate Pleasanton Unified School District's AM and PM Kindergarten ("K") and Transitional Kindergarten ("TK") sessions 2 separate sessions are offered from 12:00pm-3:00pm, 3:30pm-7:30pm
2. For 1-8th Grade children: To accommodate Pleasanton Unified School District's various Bell Schedules a continuous session of After School and Heritage School is offered from 2:00PM to 7:30PM

Safari Kid will offer special programs for their students (dance, robotics, sports, etc.). These programs are only available to Safari Kid Pleasanton students and are not available to the general public. Each of these programs tend to be for 15 students at a time and last 1 hour. These are offered:

- Weekdays: 4:00PM - 9:00PM; w/ one class per hour (so there will be some students who stay beyond the 7:30PM After School Program end)
- Weekends: 9:00AM - 6:00PM, w/ at most 3 classes per hour

The breakdown of student flows is in the Student and Staff Flows Chart.

At full capacity, we expect to have a full-time staff of 25:

- 18 Teachers
- 7 Teachers Aides

Operations

Our After-School Program will run from 12:00PM through 9:00PM, five days per week.

Staff typically arrives before students, and custodial operations continue after students have left.

Safari Kid will offer special evening programs for smaller groups of students. Programs such as dance team, drama, choir, robotics teams, and other programs that may need additional practice, coaching or group activity time.

Weekend Hours: As with evening hours, Safari Kid will have weekend hours for special programs – dance team, robotics team, choir, etc. These sessions are for small groups of students. Please refer to the attached weekend flow charts for typical loading.

Occasional Programs: Safari Kid will offer occasional evening and weekend programs, such as "back-to-school night", open house, and parent-teacher meetings. These meetings and programs will take place within the standard hours listed.

Summer Program

This program is expected to have a full capacity of 225 TK-8th Grade school children. This is for the Public-School Summer Break, usually from end-May to mid-Aug. Although the number of students arriving may vary from month to month, we generally expect the bulk of our summer session students to arrive for the morning session; We expect approximately 200 of our summer session students to arrive for the morning session and approximately 25 of our students will arrive after lunch for the afternoon session. Our maximum capacity of summer program students will remain at 225.

Morning arrival: During the summer session, Safari Kid will begin each day at a public park in the Pleasanton area. The Park is rented from the City of Pleasanton Sports Park Department. For the past 6 summers, we approached the Recreation Supervisor, at the City Sports Park Department, in the Spring and discuss Park availability for Summer weekday morning use only. He makes a recommendation of Park and we pay the rent. From 2013 – 2017, we used the Hart Middle School field and this summer, we used Creekside Park. We expect that we will continue to do this for all future summers as well.



The official start time is 830am at the Park (not at Safari Kid Pleasanton). However, the child drop-off is based on when parents leave for work. During the past summers, this has resulted in most of the drop-offs being after 9am.

The day begins with sports, games and other outdoor activities. Students will be transported back to the Willow Road facility beginning at 10:00 am via Van Pool shuttles where they will remain for the rest of the day.

We offer the following sessions:

1. Morning session: 8:30AM - 2:00PM
2. Afternoon session: 1:30PM - 7:00PM
3. Full Day session: 8:30AM - 7:30PM

At full capacity, we expect to have a full-time staff of 25:

- 18 Teachers
- 7 Teachers Aides

Operations

Our After School Summer Program will run from 8:30 AM through 7:30PM, five days per week. Note, year-round Preschool continues during the Summer also, starting at 7:30 AM.

Staff typically arrives before students, and custodial operations continue after students have left

OUTDOOR PLAYGROUND

As we have a structured program, the Preschool children will be allowed to go to the on-site outdoor playground at specific scheduled times to ensure that we use playground per the capacity needs. The play area schedule will vary depending on the size of the class, the specific needs of the class and the session.

The play area will be in continuous use throughout the day; scheduling is done to insure appropriate access without overloading the play area. The Heritage After-School Program students will not use the outdoor playground. Our preliminary scheduling shows that we may be using the playground during the following times (subject to change):

- Morning Session: 9:30 AM – 10:30 AM (we will be rotating children through 20min play sessions)
- Afternoon Session: 1:30 PM – 2:30 PM (we will be rotating children through 20min play sessions)
- Late Afternoon Session: 4:30 PM – 5:30 PM (we will be rotating children through 20min play sessions)

The proposed playground will be built on the south side of the building, currently an open courtyard.

- The existing courtyard will be re-purposed as is. The existing masonry wall will be used as is. We will do some landscape cleanup to make the area child-friendly.
- Where there are gaps in the masonry wall, a six-foot-tall wrought iron fence will be installed to enclose the play area.
- An emergency push gate will be installed to allow for emergency access to the play.

TRANSPORTATION

After School Program students (K-8th Grade) are transported from their Public Schools after school by Van Pools. We manage the Van Pools to minimize number of cars on the road from Public School to the facility. We expect a total of 15 Van Pools, each able to take 6 students. The Van Pool vehicles do not remain on-site.



PARKING, LOADING AREAS AND PICK-UP AND DROP-OFF

- This project proposes to designate eight parking spaces along the perimeter of the building (spaces that are connected to the building with a walkway) as “five-minute” parking spaces. These spaces are intended for drop-off and pick-up of the preschool children. These parking spaces will minimize the number of young children that need to cross traffic aisles.
- The pick-up and drop off of students is staggered throughout the day to minimize the flow of parents at any given moment, and to minimize the overall traffic impact on the site. Please reference the tables below to understand the daily flow of children through the site.
- All pick-up and drop-off of students will be handled through the front lobby or the lobby of the preschool on the side of the building.
- The make-up of the student body includes many siblings. Many of our parents have also made carpool arrangements with other parents (Safari Kid manages this as a service to its customers) The net result is approximately a 25% reduction in the number of vehicles required to pick up the students.

Sign In / Sign Out / Parent / Volunteer Policies

- All entry doors will only be opened from the inside or with a key
- All students will be signed in and signed out by parent / guardian at the entry door
- Parents wanting to meet staff must make an appointment and will only be allowed to enter by a teacher or administrator
- Teachers and volunteers will need to sign in and sign out at the entry door

Student and Staff Flows

Safari Kid Pleasanton has projected student and staff flows for weekdays and weekends. All our weekday class sessions are set up to ensure minimal traffic during peak hours

See Attached spread sheets for Student and Staff Flows

Student Breakdown by Grade

Preschool (Full time)	50
Preschool (Part time)	50
Kindergartners	40
First Grade	40
Second Grade	40
Third Grade	35
Fourth Grade	30
Fifth Grade	20
Sixth Grade	10
Seventh & Eight Grade	10

Parking Demand:

This project will use the parking on the East and South side of the building closest to the space. Based on the original construction and use the building should have 1 parking space for each 250 square feet of gross area. This would provide an allowance of ~27,900 sf/250 sf/space or 112 spaces.

Parking demand for a nursery school based on the City of Pleasanton Zoning Code is 1 space for each faculty member. This would yield the following parking demand:

Safari Kid Staffing (38)	38 spaces
Surplus parking	74 spaces.

Hazardous Materials:

This project does not propose the use or storage of hazardous materials.



SAFARI KIDSM PLEASANTON
5627, Gibraltar Drive, Suite 200
E-Mail: safarikidpleasanton@gmail.com
Phone: (925) 264 9679
www.safariKidUSA.com

Accessibility:

Improvements to the building will bring the facility into full compliance with the 2016 standards of accessibility as defined by the California Building Code and the Americans with Disabilities Act.

Building Codes:

This project is subject to the requirements of the 2016 family of the California Building Codes.



EXTRACURRICULAR ACTIVITIES

Safari Kid Pleasanton will offer a set of Extracurricular Activities. This is driven by the families we support who want their children to have a well-rounded growth and be kept in a safe environment. Within Safari Kid Pleasanton, we can offer these activities without the children having to leave the site.

These activities will take place on site, within the Art or Dance Rooms or in the open area. Most of these are 1-hour activities, usually during the weekdays between 4:00PM - 9:00PM.

Exploratory Art Class

This is an excellent way to build Fine (small) and Gross (large) motor skills. Children are introduced to basic and advanced concepts of drawing, coloring, modeling and painting.

One Stroke Painting

Enjoy creating many shades of colors as you paint your masterpiece on a canvas. How exciting it would be to display your hard work! Learn the different forms of painting from One Stroke Painting to Madhubani and Warli Art (famous forms of Indian art).

Dance Class

We offer Bollywood dancing for children. We have 2 different levels for children based on age group. Our dance students participate in various dance competitions across the bay area. We are proud to report that Safari Kid dance students have won numerous group and solo trophies in dance competitions.

Lego Robotics

Safari Kids has adopted Lego Robotics as it is very exciting for children and easy to implement for teachers, Robotics is a premier vehicle for hands-on delivery of science, technology, engineering, and math concepts to students. Also, through Robotics students build important 21st- Century skills- problem solving, critical thinking and teamwork. Lego Robotics delivers the latest in curriculum at all age levels.

Karate

Karate is a very exciting Martial Art form that focuses on character development, physical fitness and practical self-defense. Students learn self-discipline, improved concentration, focus, physical fitness and improved stamina. It builds self-confidence and ability to focus under pressure. With a structured syllabus and the progressive belt system lets students grow at a rate that suits their learning and physical ability.

Dramatics and Public Speaking

Public speaking skills provide life-long benefits. By studying drama children use communication skills to present their own opinion, learn how to speak to other people and address a crowd. Children learn to do an informative and interesting presentation. Drama and communicative skills help students in university, future employment and life.

Kathak

Classical Indian dance Kathak, certainly elevates the learner's cognitive reflexes and hence could benefit him or her tremendously in other activities. Kathak helps fight stage fright, boosts self-esteem and team skills and offers unique opportunities to those individuals who wish to maintain an active lifestyle.



BUILDING CODE SUMMARY

• BUILDING DATA

- ASSESSOR'S PARCEL NUMBER 941-2760-15
- GROSS BUILDING AREA 63,011 SF
- PROPOSED SAFARI KID TOTAL AREA 27,900 SF
- PRESCHOOL AREA 5,705 SF
- AFTER SCHOOL AREA 22,200
- OUTDOOR AREA (AT EXISTING PATIO) 3,168 SF +/-
- TYPE OF CONSTRUCTION III-B
- BUILDING IS FULLY SPRINKLED
- BUILDING HAS A COMPLETE FIRE ALARM SYSTEM
- BUILDING HEIGHT 1 STORY
- SAFARI KID OCCUPANCY E
- ADJACENT TENANT OCCUPANCIES MIX-USE (A/B/F/S)
- REQUIRED OCCUPANCY SEPARATION 1 HOUR
- BUILDING CODE: THIS PROJECT IS SUBJECT TO THE REQUIREMENTS OF THE 2016 FAMILY OF THE CALIFORNIA BUILDING CODES.
- **ALLOWABLE AREA:** TYPE III-B SINGLE STORY/SPRINKLER BLDG PER TABLE 506.2
 - A3 (MARTIAL ARTS) OCCUPANCY ALLOWABLE AREA: 38,000 SF
 - B/S1 (OFFICE EQUIPMENT) OCCUPANCY ALLOWABLE AREA: 70,000 SF (**WILL USE S1 FOR CALCULATIONS – MORE RESTRICTIVE**)
 - E (SAFARI KID) OCCUPANCY ALLOWABLE AREA: 58,000 SF
- **ALLOWABLE AREA FACTOR INCREASE BASED ON FRONTAGE:** (If = [F/P-0.25]W/30
 - If = [1,080/1,080-0.25]W/30 = **0.75 FACTOR INCREASE**
- **ALLOWABLE AREA INCREASE SINGLE OCCUPANCY / ONE STORY:** (Aa = At + (NS x If))
 - A3 (OCCUPANCY) 38,000 SF + (9,500 SF x 0.75) = 45, 125SF AREA INCREASE
 - S1 (OCCUPANCY) 70,000 SF + (17,500 SF x 0.75) = 83,125 SF AREA INCREASE
 - E (OCCUPANCY) 58,000 SF + (14,500 SF x 0.75) = 68,875 SF AREA INCREASE
- **ALLOWABLE BUILDING AREA WITH MIX OCCUPANCIES:** (THE BUILDING AREA SHALL BE SUCH THAT THE SUM OF THE RATIOS OF THE ACTUAL BUILDING AREA OF EACH SEPARATED OCCUPANCY DIVIDED BY THE ALLOWABLE BUILDING AREA OF EACH SEPARATED OCCUPANCY SHALL NOT EXCEED 1)
 - A3 OCCUPANCY: 10, 054 SF / 45,125 SF = .222 FACTOR
 - S1 OCCUPANCY: 25,057 SF / 83,125 SF = .301 FACTOR
 - E OCCUPANCY: 27,900 SF / 68,875 SF = .405 FACTOR
 - **TOTAL SUM OF RATIOS= .928 FACTOR (DOES NOT EXCEED 1)**
- **OCCUPANT LOADS:** (NOTE: A DETAILED EXITING ANALYSIS WILL BE PROVIDED AT THE BUILDING PERMIT PHASE OF THE PROJECT. THE DETAILED ANALYSIS WILL SHOW OCCUPANT LOADS ON A ROOM-BY-ROOM BASIS, INCLUDING TRIBUTARY LOADS, EXIT WIDTHS, COMMON PATH OF TRAVEL, AND EXIT ACCESS DISTANCES. THIS PRELIMINARY ANALYSIS IS BASED ON GROSS AREAS AND WILL SHOW MORE STUDENTS THAN ARE PROPOSED OR WILL BE ALLOWED BY THE CONDITIONAL USE PERMIT.
- **PRESCHOOL AREAS:** 1 PERSON PER 20 SF
 - 5,705/20 = 285 OCCUPANTS
 - TWO EXITS ARE REQUIRED, TWO EXITS ARE PROVIDED.



- **AFTER SCHOOL AREAS:** 1 PERSON PER 20 SF
 - $22,200/20 = 1,110$ OCCUPANTS
 - THREE EXITS ARE REQUIRED, THREE EXITS ARE PROVIDED
- **PLUMBING FIXTURES REQUIRED IN "E" OCCUPANCIES:**
 - FOR MALE OCCUPANTS, 1 TOILET IS REQUIRED FOR EVERY 50 BOYS/MEN AND 1 URINAL FOR EVERY 100
 - FOR FEMALE OCCUPANTS, 1 TOILET IS REQUIRED FOR EVERY 30 GIRLS/WOMEN
 - LAVATORIES: 1 LAVATORY IS REQUIRED FOR EVERY 40 BOYS/GIRLS
 - DRINKING FOUNTAINS: PROVIDE 1 FOR EVERY 150 OCCUPANTS
 - SERVICE SINK = 1 SERVICE SINK REQUIRED
 - FOR CPC DEFINES 1 PERSON FOR EVERY 50 SQUARE FEET
 - **IN PRESCHOOL:**
 - $5,705\text{ SF}/50=114$ PEOPLE = 57 BOYS + 57 GIRLS
 - $57/50 = 1$ TOILET + 1 URINAL FOR BOYS
 - $57/30 = 2$ TOILETS FOR GIRLS
 - $114/40 = 3$ LAVATORIES ARE REQUIRED TOTAL
 - $114/150 = .76 = 1$ DRINKING FOUNTAIN REQUIRED
 - THE PRESCHOOL TOILET ROOM IS NOT DIVIDED BY SEX, AND IS DESIGNED FOR SUPERVISION OF PRESCHOOL AGE STUDENTS 4. FIXTURES MINIMUM IN THIS ROOM ARE REQUIRED.
 - **IN AFTER SCHOOL AREA:**
 - $22,200\text{ SF}/50=444$ PEOPLE = 222 BOYS + 222 GIRLS
 - $222/50 = 5$ TOILET + 2 (1 PER 100) URINAL FOR BOYS
 - $222/30 = 7$ TOILETS FOR GIRLS
 - $222/40 = 6$ LAVATORIES FOR BOYS
 - $222/40 = 6$ LAVATORIES FOR GIRLS
 - $444/150 = 3$ DRINKING FOUNTAINS REQUIRED
- **HAZARDOUS MATERIALS:**
 - THIS PROJECT DOES NOT PROPOSE THE USE OR STORAGE OF HAZARDOUS MATERIALS.
- **ACCESSIBILITY:**
 - IMPROVEMENTS TO THE BUILDING WILL BRING THE FACILITY INTO FULL COMPLIANCE WITH THE 2016 STANDARDS OF ACCESSIBILITY AS DEFINED BY THE CALIFORNIA BUILDING CODE AND THE AMERICAN WITH DISABILITIES ACT.

STAFF AND STUDENT FLOW - SCHOOL YEAR SCHEDULE

STUDENT FLOW BY HOUR.

HOUR OF DAY	PRESCHOOL STUDENTS ARRIVING	PRESCHOOL STUDENTS DEPARTING	TOTAL PRESCHOOL STUDENTS AT FACILITY	AFTER SCHOOL STUDENTS ARRIVING	AFTER SCHOOL STUDENTS DEPARTING	TOTAL AFTER SCHOOL STUDENTS AT FACILITY	TOTAL STUDENTS AT FACILITY	CARS / VANPOOLS FOR DROP OFF	CARS / VANPOOLS FOR PICK UP
7:30am - 8:00am	20	0	20	0	0	0	20	20	0
8:00am - 8:30am	50	0	70	0	0	0	70	50	0
8:30am - 9:00am	30	0	100	0	0	0	100	30	0
9:00am - 9:30am	0	0	100	0	0	0	100	0	0
9:30am - 10:00am	0	0	100	0	0	0	100	0	0
10:00am - 10:30am	0	0	100	0	0	0	100	0	0
10:30am - 11:00am	0	0	100	0	0	0	100	0	0
11:00am - 11:30am	0	20	80	0	0	0	80	0	20
11:30am - 12:00pm	20	10	90	0	0	0	90	20	10
12:00pm - 12:30pm	10	0	100	0	0	0	100	10	0
12:30pm - 1:00pm	0	0	100	40	0	40	140	7	0
1:00pm - 1:30pm	0	0	100	0	0	40	140	0	0
1:30pm - 2:00pm	0	0	100	0	0	40	140	0	0
2:00pm - 2:30pm	0	0	100	60	0	100	200	10	0
2:30pm - 3:00pm	0	0	100	65	0	165	265	11	0
3:00pm - 3:30pm	0	0	100	60	0	225	325	10	0
3:30pm - 4:00pm	0	50	50	0	10	215	265	0	50
4:00pm - 4:30pm	0	15	35	0	0	215	250	0	15
4:30pm - 5:00pm	0	15	20	0	0	215	235	0	15
5:00pm - 5:30pm	0	0	20	0	15	200	220	0	15
5:30pm - 6:00pm	0	0	20	0	15	185	205	0	15
6:00pm - 6:30pm	0	10	10	0	45	140	150	0	35
6:30pm - 7:00pm	0	10	0	0	60	80	80	0	35
7:00pm - 7:30pm	0	0	0	0	50	30	30	0	35
7:30pm - 8:00pm	0	0	0	0	15	15	15	0	0
8:00pm - 8:30pm	0	0	0	0	0	15	15	0	0
8:30pm - 9:00pm	0	0	0	0	15	0	0	0	0

Vanpool from Public School Kinders(*)

Vanpool from Public School 1-5th(*)

Vanpool from Public School 1-5th(*)

Vanpool from Public School 1-5th(*)

Carpool for Siblings and Friends

Carpool for Siblings and Friends

Carpool for Siblings and Friends

Carpool for Siblings and Friends

Carpool for Siblings and Friends

Carpool for Siblings and Friends

Carpool for Siblings and Friends

End of 1st Evening Extra-curricular

End of 2nd Evening Extra-curricular

STAFF FLOW BY HOUR.

STAFF ARRIVING	STAFF DEPARTING	TOTAL STAFF AT FACILITY
7	0	7
8	0	15
0	0	15
0	0	15
0	0	15
0	0	15
0	0	15
0	0	15
0	0	15
0	0	15
8	0	23
0	0	23
15	0	38
0	0	38
0	0	38
0	0	38
0	8	30
0	2	28
0	2	26
0	0	26
0	0	26
0	15	11
0	9	2
0	1	1
0	0	1
0	1	0

(*): We have about 15 voluntary vanpool drivers who can shuttle 6 kids each in their Van

STAFF AND STUDENT FLOW - SUMMER SCHEDULE

STUDENT FLOW BY HOUR.

HOUR OF DAY	PRESCHOOL STUDENTS ARRIVING	PRESCHOOL STUDENTS DEPARTING	TOTAL PRESCHOOL STUDENTS AT FACILITY	AFTER SCHOOL STUDENTS ARRIVING	AFTER SCHOOL STUDENTS DEPARTING	TOTAL AFTER SCHOOL STUDENTS AT FACILITY	TOTAL STUDENTS AT FACILITY	CARS / VANPOOLS FOR DROP OFF	CARS / VANPOOLS FOR PICK UP
7:30am - 8:00am	20	0	20	0	0	0	20	20	0
8:00am - 8:30am	50	0	70	0	0	0	70	50	0
8:30am - 9:00am	30	0	100	0	0	0	100	30	0
9:00am - 9:30am	0	0	100	0	0	0	100	0	0
9:30am - 10:00am	0	0	100	0	0	0	100	0	0
10:00am - 10:30am	0	0	100	100	0	100	200	15	0
10:30am - 11:00am	0	0	100	100	0	200	300	15	0
11:00am - 11:30am	0	20	80	0	0	200	280	0	20
11:30am - 12:00pm	20	10	90	0	0	200	290	20	10
12:00pm - 12:30pm	10	0	100	0	0	200	300	10	0
12:30pm - 1:00pm	0	0	100	0	0	200	300	0	0
1:00pm - 1:30pm	0	0	100	0	0	200	300	0	0
1:30pm - 2:00pm	0	0	100	25	0	225	325	0	0
2:00pm - 2:30pm	0	0	100	0	0	225	325	0	0
2:30pm - 3:00pm	0	0	100	0	0	225	325	0	0
3:00pm - 3:30pm	0	0	100	0	0	225	325	0	0
3:30pm - 4:00pm	0	50	50	0	10	215	265	0	50
4:00pm - 4:30pm	0	15	35	0	0	215	250	0	15
4:30pm - 5:00pm	0	15	20	0	0	215	235	0	15
5:00pm - 5:30pm	0	0	20	0	15	200	220	0	15
5:30pm - 6:00pm	0	0	20	0	15	185	205	0	15
6:00pm - 6:30pm	0	10	10	0	45	140	150	0	35
6:30pm - 7:00pm	0	10	0	0	60	80	80	0	35
7:00pm - 7:30pm	0	0	0	0	50	30	30	0	35
7:30pm - 8:00pm	0	0	0	0	15	15	15	0	0
8:00pm - 8:30pm	0	0	0	0	0	15	15	0	0
8:30pm - 9:00pm	0	0	0	0	15	0	0	0	0

Vanpool from Pleasaton Park (*)
Vanpool from Pleasaton Park (*)

Carpool for Siblings and Friends
Carpool for Siblings and Friends
Carpool for Siblings and Friends
Carpool for Siblings and Friends
Carpool for Siblings and Friends
Carpool for Siblings and Friends
Carpool for Siblings and Friends
Carpool for Siblings and Friends
Carpool for Siblings and Friends
End of 1st Evening Extra-curricular
End of 2nd Evening Extra-curricular

STAFF FLOW BY HOUR.

STAFF ARRIVING	STAFF DEPARTING	TOTAL STAFF AT FACILITY
7	0	7
8	0	15
0	0	15
0	0	15
0	0	15
0	0	15
0	0	15
0	0	15
0	0	15
0	0	15
0	0	15
8	0	23
0	0	23
15	0	38
0	0	38
0	0	38
0	0	38
0	8	30
0	2	28
0	2	26
0	0	26
0	0	26
0	0	26
0	15	11
0	9	2
0	1	1
0	0	1
0	1	0

WEEKEND FLOW

HOUR OF DAY	STUDENTS ARRIVING	STUDENTS DEPARTING	TOTAL STUDENTS AT FACILITY	STAFF ARRIVING	STAFF DEPARTING	TOTAL STAFF AT FACILITY
8:00am – 8:30am	0	0	0	0	0	0
8:30am – 9:00am	0	0	0	0	0	0
9:00am – 9:30am	15	0	15	1	0	1
9:30am – 10:00am	0	0	15	0	0	1
10:00am – 10:30am	45	15	45	2	0	3
10:30am – 11:00am	0	0	45	0	0	3
11:00am – 11:30am	45	45	45	0	0	3
11:30am – 12:00pm	0	0	45	0	0	3
12:00pm – 12:30pm	45	45	45	0	0	3
12:30pm – 1:00pm	0	0	45	0	0	3
1:00pm – 1:30pm	30	45	30	0	1	2
1:30pm – 2:00pm	0	0	30	0	0	2
2:00pm – 2:30pm	30	30	30	0	0	2
2:30pm – 3:00pm	0	0	30	0	0	2
3:00pm – 3:30pm	30	30	30	0	0	2
3:30pm – 4:00pm	0	0	30	0	0	2
4:00pm – 4:30pm	15	30	15	0	1	1
4:30pm – 5:00pm	0	0	15	0	0	1
5:00pm – 5:30pm	15	15	15	0	0	1
5:30pm – 6:00pm	0	0	15	0	0	1
6:00pm - 6:30pm	0	15	0	0	1	0
6:30pm - 7:00pm	0	0	0	0	0	0
7:00pm - 7:30pm	0	0	0	0	0	0

INTRODUCTION

The purpose of this document is to give the Pleasanton City Planning Department a view into the proposed Preschool / Heritage dt et c After School Facility at 4464 Willow Road.

Safari Kid is an existing Heritage School that provides an after-school program. It is currently located at 5627 Gibraltar Dr. The existing programs will move to the new building and a new Preschool program will be added. This will allow us to grow the program to 325 students.

A "Heritage" school is defined by the state of California as a educational school that provides cultural educational opportunities to children between 4.5 years and 18 years of age to supplement their regular education at other licensed/ accredited schools. Safari Kid provides language classes, as well as dance, art and other culturally significant classes for their students. Heritage schools are not required to be licensed by the State.

NEW PRESCHOOL / AFTER SCHOOL FACILITY

The current business is an After School / Heritage Program, established July 2013, at 5627 Gibraltar Drive. We are at capacity at this location. Safari Kid will cease operation at 5627 Gibraltar Drive following the move.

Proposed Project

- Our projected plan is to move over to the new building in late 2018
- The proposed space is approximately -27,900 square feet in size and is approximately half of the whole building.
- The build-out phase would allow a capacity of 100 preschool students and 225 Heritage/after school students.

OPERATIONS

Childs and Company LLC, DBA Safari Kid Pleasanton, will operate as a franchise of Safari Kid Inc. This is an on-going relationship that was described as part of the 2013 CUP application.

Safari Kid Pleasanton will offer three programs:

- Preschool Program for students of ages 2 to 5 years old (Year-Round)
- Heritage School-based After School Program for students in Grades TK - 8 (during Public School Year) (TK = transitional kindergarten).
- Heritage School-based Summer Program for students in Grades TK - 8 in the upcoming school year (during Public School Summer Break)

As an entire business, our operating hours are 7:30AM to 9:00PM, Monday through Sunday year-round.

Preschool Program

At the new Preschool, we understand that every child has different strengths and levels of learning and believe that while structure is important, it should not hinder growth.

All our programs are Accelerated and Emergent Learning programs. The definition of Accelerated and Emergent Learning goes hand in hand with our mission. Accelerated and emergent learning is the most advanced teaching and learning method in use today. It's a total system for speeding and enhancing both the design process and the learning processes. Based on the latest brain research, it has proven again and again to increase learning effectiveness. Keeping the program emergent is just as key to keep the program current and aligned to children's interests.

Our Pre-school program is for children of ages 2 to 5. After 5, the children tend to be in Kindergarten or Transitional Kindergarten and attend Public School.

Our Pre-school Accelerated Learning Programs are designed to provide:

- A joyful learning environment
- Collaboration among children
- Contextual learning

The New Preschool offers the following programs:

Accelerated Learning / Preschool Program

For children 2.5 years and older. We stimulate their minds with interactive learning, songs, poems, creative play and circle time. Children are introduced to the basic concepts of phonics, numbers, shapes, colors, beginning sounds, reading, logical thinking, tracing, public speaking, math and much more. This program is specifically designed to build a strong foundation for the child.

Accelerated Learning / 2 Preschool/PreK Program

Children are introduced to Reading, Math, and Science. Social Studies along with Arts & Crafts, Music & Movement and Public Speaking. As they progress through these levels, they are taught advanced concepts of reading, writing, math, critical/ logical thinking and much more. Students graduating from this program are fluent readers and have the capacity to do first and/or second grade math and comprehensions depending on their learning abilities.

Operations

Our preschool programs start at 7:30AM and continue until 7:00PM. We have different preschool programs to cater to Parent's needs, which are staggered throughout the day. We have 4 weekdays:

- Morning: 7:30AM - 11:30AM
- Afternoon: 12:30PM - 3:30PM
- Evening: 3:45PM - 7:00PM
- Full Day: 8:30AM - 7:00PM

We are planning for a capacity of 100 students. We expect 3 groups of students:

- 30 Full Day students
- 30 students will take 2 sessions
- 20 students will take 1 session only

At full capacity, we expect to have a full-time staff of 13:

- 1 Director
- 1 Office Assistant
- 5 Teachers
- 5 Aides
- 1 Operational Manager

After School Program

This program is expected to have a full capacity of 225 TK-8th Grade school children. This is for the Public-School Year, usually from mid-Aug to end-May.

We offer the following sessions:

- To accommodate Pleasanton Unified School District's AM and PM Kindergarten ("K") and Transitional Kindergarten ("TK") sessions 2 separate sessions are offered from 12:00pm-3:00pm, 3:30pm-7:30pm
- For 1-8th Grade children: To accommodate Pleasanton Unified School District's various Bell Schedules a continuous session of After School and Heritage School is offered from 2:00PM to 7:30PM

Safari Kid will offer special programs for their students (dance, robotics, sports, etc). These programs are only available to Safari Kid Pleasanton students and are not available to the general public. Each of these programs tend to be for 15 students at a time and last 1 year. These are offered:

- Weekdays: 4:00PM - 9:00PM w/ one class per hour (so there will be some students who stay beyond the 7:30PM After School Program end)
- Weekends: 9:00AM - 6:00PM, w/ at most 3 classes per hour

The breakdown of student flows is in the Student and Staff Flow Chart.

At full capacity, we expect to have a full-time staff of 25:

- 18 Teachers
- 7 Teachers Aides

Operations

Our After-School Program will run from 12:00PM through 9:00PM, five days per week.

Staff typically arrives before students, and custodial operations continue after students have left.

Safari Kid will offer special evening programs for smaller groups of students. Programs such as dance team, drama, choir, robotics teams, and other programs that may need additional practice, coaching or group activity time.

Weekend Hours: As with evening hours, Safari Kid will have weekend hours for special programs - dance team, robotics team, choir, etc. These sessions are for small groups of students. Please refer to the attached weekend flow charts for typical loading.

Occasional Programs: Safari Kid will offer occasional evening and weekend programs, such as "back-to-school night", open house, and parent-teacher meetings. These meetings and programs will take place within the standard hours listed.

Summer Program

This program is expected to have a full capacity of 225 TK-8th Grade school children. This is for the Public-School Summer Break, usually from end-May to mid-Aug. Although the number of students arriving may vary from month to month, we generally expect the bulk of our summer session students to arrive for the morning session. We expect approximately 200 of our summer session students to arrive for the morning session and approximately 25 of our students will arrive after lunch for the afternoon session. Our maximum capacity of summer program students will remain at 225.

Morning arrival: During the summer session, Safari Kid will begin each day at a public park in the Pleasanton area. The Park is rented from the City of Pleasanton Sports Park Department. For the past 6 summers, we approached the Recreation Supervisor at the City Sports Park Department, in the Spring and discuss Park availability for Summer weekday morning use only. He makes a recommendation of Park and we pay the rent. From 2013 - 2017, we used the Hart Middle School field and this summer, we used Crestside Park. We expect that we will continue to do this for all future summers as well.

The official start time is 8:00am at the Park (not at Safari Kid Pleasanton). However, the child drop-off is based on when parents leave for work. During the past summers, this has resulted in most of the drop-offs being after 8am.

The day begins with sports, games and other outdoor activities. Students will be transported back to the Willow Road facility beginning at 10:00 am via Van Pool shuttles where they will remain for the rest of the day.

We offer the following sessions:

- Morning session: 8:30AM - 2:00PM
- Afternoon session: 1:30PM - 7:00PM
- Full Day session: 8:30AM - 7:30PM

At full capacity, we expect to have a full-time staff of 25:

- 18 Teachers
- 7 Teachers Aides

Operations

Our After School Summer Program will run from 8:30 AM through 7:30PM, five days per week. Note, year round Preschool continues during the Summer also, starting at 7:30 AM.

Staff typically arrives before students, and custodial operations continue after students have left

OUTDOOR PLAYGROUND

The play area will be in continuous use throughout the day, scheduling is done to insure appropriate access without overloading the play area. The Heritage After-School Program students will not use the outdoor playground. Our preliminary scheduling shows that we may be using the playground during the following times (subject to change):

- Morning Session: 9:30 AM - 10:30 AM (we will be rotating children through 20min play sessions)
- Afternoon Session: 1:30 PM - 2:30 PM (we will be rotating children through 20min play sessions)
- Late Afternoon Session: 4:30 PM - 5:30 PM (we will be rotating children through 20min play sessions)

The proposed playground will be built on the south side of the building, currently an open courtyard.

- The existing courtyard will be re-purposed as is. The existing masonry wall will be used as is. We will do some landscape cleanup to make the area child-friendly.
- Where there are gaps in the masonry wall, a six-foot-tall wrought iron fence will be installed to enclose the play area.
- An emergency push gate will be installed to allow for emergency access to the play.

TRANSPORTATION

After School Program students (K-8th Grade) are transported from their Public Schools after school by Van Pools. We manage the Van Pools to minimize number of cars on the road from Public School to the facility. We expect a total of 15 Van Pools, each able to take 6 students. The Van Pool vehicles do not remain on-site.

PARKING, LOADING AREAS AND PICK-UP AND DROP-OFF

- This project proposes to designate eight parking spaces along the perimeter of the building (spaces that are connected to the building with a walkway) as "five-minute" parking spaces. These spaces are intended for drop-off and pick-up of the preschool children. These parking spaces will minimize the number of young children that need to cross traffic aisles.

- The pick-up and drop-off of students is staggered throughout the day to minimize the flow of parents at any given moment, and to minimize the overall traffic impact on the site. Please reference the tables below to understand the daily flow of children through the site.
- All pickup and drop-off of students will be handled through the front lobby or the lobby of the preschool on the side of the building.
- The make-up of the student body includes many shillings. Many of our parents have also made carpool arrangements with other parents (Safari Kid manages this as a service to its customers) The net result is approximately a 25% reduction in the number of vehicles required to pick up the students.

Sign In / Sign Out / Parent / Volunteer Policies

- All entry doors will only be opened from the inside or with a key
- All students will be signed in and signed out by parent / guardian at the entry door
- Parents wanting to meet staff must make an appointment and will only be allowed to enter by a teacher or administrator
- Teachers and volunteers will need to sign in and sign out at the entry door

Student and Staff Flows

Safari Kid Pleasanton has projected student and staff flows for weekdays and weekends. All our weekday class sessions are set up to ensure minimal traffic during peak hours. See Attached spread sheets for Student and Staff Flows

Student Breakdown by Grade

Preschool (Full time)	50
Preschool (Part time)	50
Kindergartners	40
First Grade	40
Second Grade	40
Third Grade	35
Fourth Grade	30
Fifth Grade	20
Sixth Grade	10
Seventh & Eight Grade	10

Parking Demand:

This project will use the parking on the East and South side of the building closest to the space. Based on the original construction and use the building should have 1 parking space for each 250 square feet of gross area. This would provide an allowance of -27,900 sf/250 sf/space or 112 spaces.

Parking demand for a nursery school based on the City of Pleasanton Zoning Code is 1 space for each faculty member. This would yield the following parking demand:

Safari Kid Staffing (38)	38 spaces
Surplus parking	74 spaces.

Hazardous Materials:

This project does not propose the use or storage of hazardous materials.

Accessibility:

Improvements to the building will bring the facility into full compliance with the 2016 standards of accessibility as defined by the California Building Code and the Americans with Disabilities Act.

Building Codes:

This project is subject to the requirements of the 2016 family of the California Building Codes.

EXTRACURRICULAR ACTIVITIES

Safari Kid Pleasanton will offer a set of Extracurricular Activities. This is driven by the families we support who want their children to have a well rounded growth and be kept in a safe environment. Within Safari Kid Pleasanton, we can offer these activities without the children having to leave the site.

These activities will take place on site, within the Art or Dance Rooms or in the open area. Most of these are 1-hour activities, usually during the weekdays between 4:00PM - 9:00PM.

Exploratory Art Class

This is an excellent way to build Fine (small) and Gross (large) motor skills. Children are introduced to basic and advanced concepts of drawing, coloring, modeling and painting.

One Stroke Painting

Enjoy creating many shades of colors as you paint your masterpiece on a canvas. How exciting it would be to display your hand work! Learn the different forms of painting from One Stroke Painting to Madhubani and Warli Art (ancient forms of Indian art).

Dance Class

We offer Bollywood dancing for children. We have 2 different levels for children based on age group. Our dance students participate in various dance competitions all across the bay area. We are proud to report that Safari Kid dance students have won numerous group and solo trophies in dance competitions.

Lego Robotics

Safari Kids has adopted Lego Robotics as it is very exciting for children and easy to implement for teachers. Robotics is a premier vehicle for hands-on delivery of science, technology, engineering, and math concepts to students. Also, through Robotics students build important 21st Century skills- problem solving, critical thinking and teamwork. Lego Robotics delivers the latest in curriculum at all age levels.

Karate

Karate is a very exciting Martial Art form that focuses on character development, physical fitness and practical self-defense. Students learn self-discipline, improved concentration, focus, physical fitness and improved stamina. It builds self-confidence and ability to focus under pressure. With a structured syllabus and the progressive belt system lets students grow at a rate that suits their learning and physical ability.

Dramatics and Public Speaking

Public speaking skills provide life-long benefits. By studying drama children use communication skills to present their own opinion, learn how to speak to other people and address a crowd. Children learn to do an informative and interesting presentation. Drama and communicative skills help students in university, future employment and life.

Katkah

Classical Indian dance Katkah, certainly elevates the learner's cognitive reflexes and hence could benefit him or her tremendously in other activities. Katkah helps fight stage fright, boosts self-esteem and team skills and offers unique opportunities to those individuals who wish to maintain an active lifestyle.

BUILDING CODE SUMMARY

BUILDING DATA

- ASSESSOR'S PARCEL NUMBER: 941-2790-15
- GROSS BUILDING AREA: 63,011 SF
- PROPOSED SAFARI KID TOTAL AREA: 27,900 SF
- PRESCHOOL AREA: 5,705 SF
- AFTER SCHOOL AREA: 22,200
- OUTDOOR AREA (A) (EXISTING PATIO): 3,168 SF +/-
- TYPE OF CONSTRUCTION: II-B
- BUILDING IS FULLY SPRINKLED
- BUILDING HAS A COMPLETE FIRE ALARM SYSTEM
- BUILDING HEIGHT: 1 STORY
- SAFARI KID OCCUPANCY: E
- ADJACENT TENANT OCCUPANCIES: MIX USE (A/B/S)
- REQUIRED OCCUPANCY SEPARATION: 1 HOUR
- BUILDING CODE: THIS PROJECT IS SUBJECT TO THE REQUIREMENTS OF THE 2016 FAMILY OF THE CALIFORNIA BUILDING CODES.

ALLOWABLE AREA: TYPE II-B SINGLE STORY SPRINKLER BLDG PER TABLE 506.2

- A3 (MARTIAL ARTS) OCCUPANCY ALLOWABLE AREA: 38,000 SF
- B/S1 (OFFICE EQUIPMENT) OCCUPANCY ALLOWABLE AREA: 70,000 SF (W/ALL USE S1 FOR CALCULATIONS - MORE RESTRICTIVE")
- E (SAFARI KID) OCCUPANCY ALLOWABLE AREA: 58,000 SF

ALLOWABLE AREA FACTOR INCREASE BASED ON FRONTAGE: (F = F/P-0.25)/W/30

- I = [(1.0801,086-0.25)/W/30 + 0.75 FACTOR INCREASE

ALLOWABLE AREA INCREASE SINGLE OCCUPANCY / ONE STORY: (Aa + A) + (Ns + I)

- A3 (OCCUPANCY) 38,000 SF + (9,500 SF x 0.75) = 45,125 SF AREA INCREASE
- S1 (OCCUPANCY) 70,000 SF + (17,500 SF x 0.75) = 83,125 SF AREA INCREASE
- E (OCCUPANCY) 58,000 SF + (14,500 SF x 0.75) = 68,875 SF AREA INCREASE

ALLOWABLE BUILDING AREA WITH MIX OCCUPANCIES: (THE BUILDING AREA SHALL BE SUCH THAT THE SUM OF THE RATIOS OF THE ACTUAL BUILDING AREA OF EACH SEPARATED OCCUPANCY DIVIDED BY THE ALLOWABLE BUILDING AREA OF EACH SEPARATED OCCUPANCY SHALL NOT EXCEED 1)

- A3 OCCUPANCY: 10, 054 SF / 45,125 SF = .222 FACTOR
- S1 OCCUPANCY: 25,057 SF / 83,125 SF = .301 FACTOR
- E OCCUPANCY: 27,900 SF / 68,875 SF = .405 FACTOR

TOTAL SUM OF RATIOS= .328 FACTOR (DOES NOT EXCEED 1)

- OCCUPANT LOADS: (NOTE: A DETAILED EXITING ANALYSIS WILL BE PROVIDED AT THE BUILDING PERMIT PHASE OF THE PROJECT. THE DETAILED ANALYSIS WILL SHOW OCCUPANT LOADS ON A ROOM-BY-ROOM BASIS, INCLUDING TRIBUTARY LOADS, EXIT WIDTHS, COMMON PATH OF TRAVEL, AND EXIT ACCESS DISTANCES. THIS PRELIMINARY ANALYSIS IS BASED ON GROSS AREAS AND WILL SHOW MORE STUDENTS THAN ARE PROPOSED OR WILL BE ALLOWED BY THE CONDITIONAL USE PERMIT.

- PRESCHOOL AREAS: 1 PERSON PER 20 SF
- 5,705/20 = 285 OCCUPANTS
- TWO EXITS ARE REQUIRED, TWO EXITS ARE PROVIDED.
- AFTER SCHOOL AREAS: 1 PERSON PER 20 SF
- 22,200/20 = 1,110 OCCUPANTS
- THREE EXITS ARE REQUIRED, THREE EXITS ARE PROVIDED

PLUMBING FIXTURES REQUIRED IN "E" OCCUPANCIES:

- FOR MALE OCCUPANTS, 1 TOILET IS REQUIRED FOR EVERY 50 BOYS/MEN AND 1 URINAL FOR EVERY 100
- FOR FEMALE OCCUPANTS, 1 TOILET IS REQUIRED FOR EVERY 30 GIRLS/WOMEN
- LAVATORIES: 1 LAVATORY IS REQUIRED FOR EVERY 40 BOYS/GIRLS
- DRINKING FOUNTAINS, PROVIDE 1 FOR EVERY 150 OCCUPANTS
- SERVICE SINK = 1 SERVICE SINK REQUIRED
- FOR CPC, DEFINE 1 PERSON FOR EVERY 50 SQUARE FEET

IN PRESCHOOL:

- 5,705 SF/50=114 PEOPLE = 57 BOYS + 57 GIRLS
- 57/50 = 1 TOILET + 1 URINAL FOR BOYS
- 57/30 = 2 TOILETS FOR GIRLS
- 114/40 = 3 LAVATORIES ARE REQUIRED TOTAL
- 114/150 = .76 = 1 DRINKING FOUNTAIN REQUIRED
- THE PRESCHOOL TOILET ROOM IS NOT DIVIDED BY SEX, AND IS DESIGNED FOR SUPERVISION OF PRESCHOOL AGE STUDENTS + 4 FIXTURES MINIMUM IN THIS ROOM ARE REQUIRED.

IN AFTER SCHOOL AREA:

- 22,200 SF/50=444 PEOPLE = 222 BOYS + 222 GIRLS
- 222/50 = 5 TOILET + 2 (1 PER 100) URINAL FOR BOYS
- 222/30 = 7 TOILETS FOR GIRLS
- 222/40 = 6 LAVATORIES FOR BOYS
- 222/40 = 6 LAVATORIES FOR GIRLS
- 444/150 = 3 DRINKING FOUNTAINS REQUIRED

HAZARDOUS MATERIALS:

- THIS PROJECT DOES NOT PROPOSE THE USE OR STORAGE OF HAZARDOUS MATERIALS.

ACCESSIBILITY:

- IMPROVEMENTS TO THE BUILDING WILL BRING THE FACILITY INTO FULL COMPLIANCE WITH THE 2016 STANDARDS OF ACCESSIBILITY AS DEFINED BY THE CALIFORNIA BUILDING CODE AND THE AMERICAN WITH DISABILITIES ACT.

STUDENT FLOW BY HOUR.

HOUR OF DAY	PRESCHOOL STUDENTS ARRIVING	PRESCHOOL STUDENTS DEPARTING	TOTAL PRESCHOOL STUDENTS AT FACILITY	AFTER SCHOOL STUDENTS ARRIVING	AFTER SCHOOL STUDENTS DEPARTING	TOTAL AFTER SCHOOL STUDENTS AT FACILITY	TOTAL STUDENTS AT FACILITY	CARS / VANPOOLS FOR DROP OFF	CARS / VANPOOLS FOR PICK UP
7:30am - 8:00am	20	0	20	0	0	0	20	20	0
8:00am - 8:30am	50	0	70	0	0	0	70	50	0
8:30am - 9:00am	30	0	100	0	0	0	100	30	0
9:00am - 9:30am	0	0	100	0	0	0	100	0	0
9:30am - 10:00am	0	0	100	0	0	0	100	0	0
10:00am - 10:30am	0	0	100	0	0	0	100	0	0
10:30am - 11:00am	0	0	100	0	0	0	100	0	0
11:00am - 11:30am	0	20	80	0	0	0	80	0	20
11:30am - 12:00pm	20	10	90	0	0	0	90	20	10
12:00pm - 12:30pm	10	0	100	0	0	0	100	10	0
12:30pm - 1:00pm	0	0	100	40	0	40	140	7	0
1:00pm - 1:30pm	0	0	100	0	0	40	140	0	0
1:30pm - 2:00pm	0	0	100	0	0	40	140	0	0
2:00pm - 2:30pm	0	0	100	60	0	100	200	10	0
2:30pm - 3:00pm	0	0	100	65	0	165	265	11	0
3:00pm - 3:30pm	0	0	100	60	0	225	325	10	0
3:30pm - 4:00pm	0	50	50	0	10	215	265	0	50
4:00pm - 4:30pm	0	15	35	0	0	215	250	0	15
4:30pm - 5:00pm	0	15	20	0	0	215	235	0	15
5:00pm - 5:30pm	0	0	20	0	15	200	220	0	15
5:30pm - 6:00pm	0	0	20	0	15	185	205	0	15
6:00pm - 6:30pm	0	10	10	0	45	140	150	0	35
6:30pm - 7:00pm	0	10	0	0	60	80	80	0	35
7:00pm - 7:30pm	0	0	0	0	50	30	30	0	35
7:30pm - 8:00pm	0	0	0	0	15	15	15	0	0
8:00pm - 8:30pm	0	0	0	0	0	15	15	0	0
8:30pm - 9:00pm	0	0	0	0	15	0	0	0	0

(*): We have about 15 voluntary vanpool drivers who can shuttle 6 kids each in their Van

student and staff flow - weekday schedule - school year.

STUDENT FLOW BY HOUR.

HOUR OF DAY	PRESCHOOL STUDENTS ARRIVING	PRESCHOOL STUDENTS DEPARTING	TOTAL PRESCHOOL STUDENTS AT FACILITY	AFTER SCHOOL STUDENTS ARRIVING	AFTER SCHOOL STUDENTS DEPARTING	TOTAL AFTER SCHOOL STUDENTS AT FACILITY	TOTAL STUDENTS AT FACILITY	CARS / VANPOOLS FOR DROP OFF	CARS / VANPOOLS FOR PICK UP
7:30am - 8:									

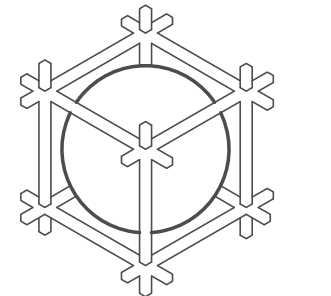
floor plan sheet notes

- 1. ---
- 2. - - -



floor plan legend

GRAPHIC	DESCRIPTION
	EXISTING WALL, TO REMAIN.
	EXISTING WALL, TO BE REMOVED
	NEW INTERIOR NON BEARING WALL



wayne rensaw
architect

111 W Saint John St. #950
San Jose, CA 95113
(408) 288 8033

consultant

consultant

- general notes**
- This sheet is part of a set and is not to be used alone.
 - This sheet is not to be used for construction unless the architect's stamp and signature appear on drawings and status box indicates drawings have been released for construction.
 - These plans and prints thereof, as instruments of service, are owned by the architect and are for use on this project only. Reproduction and/or distribution without the prior written consent of the architect is forbidden.
 - Copyright Wayne Renshaw, Architect 2018

Safari Kid
Preschool

Conditional Use
Permit Application

4464 Willow Road
Pleasanton, CA

#	description	date
1	PLANNING REVISIONS	10/10/18

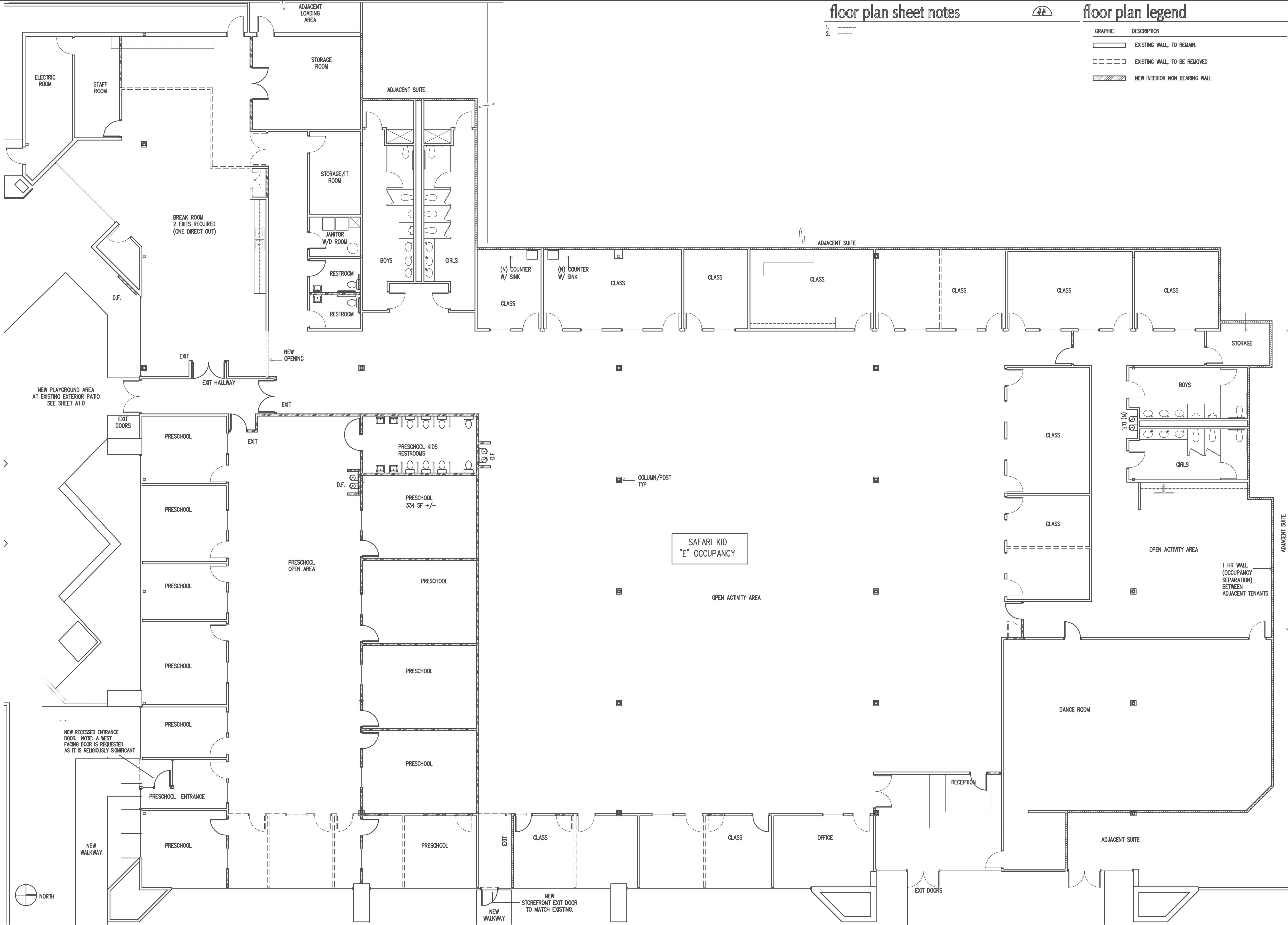
revision	status	date
<input type="radio"/>	client review	
<input type="radio"/>	plan check	
<input type="radio"/>	bidding	
<input type="radio"/>	construction	

date	8/10/18
proj num	1705
proj mgr	WR
proj arch	WR

scale

floor
plan

sheet number
A2.1



floor plan

1/8"=1'-0" 0 5 10 4



wayne renschow
architect

111 W Saint John St. #95
San Jose, CA 95113
(408) 288 8033

consultant

consultant



EXISTING TREES, TO REMAIN.
SEE LANDSCAPE PLAN

NEW IRON FENCE (WITH GATE)
BETWEEN (E) CONCRETE WALLS. TYP.
(SEE PLAYGROUND PLAN)

EXISTING 6FT HIGH
CONCRETE WALL,
TO REMAIN.
(SEE PLAYGROUND PLAN)

EXISTING LIGHTING
TO REMAIN. TYP

EXISTING CONCRETE BENCH
TO REMAIN

EXISTING BUILDING

SEE PLAYGROUND & LANDSCAPE PLANS
FOR PROPOSED IMPROVEMENTS AT
EXISTING LANDSCAPE AREAS.

EXISTING BUILDING ENTRANCE

EXISTING PLANTERS
TO REMAIN.

EXISTING PAVED PATIO AREAS
TO REMAIN.



EXISTING TREES, TO REMAIN.
SEE LANDSCAPE PLAN

SEE PLAYGROUND & LANDSCAPE PLANS
FOR PROPOSED IMPROVEMENTS AT
EXISTING LANDSCAPE AREAS.

EXISTING 6FT HIGH
CONCRETE WALL,
TO REMAIN.
(SEE PLAYGROUND PLAN)

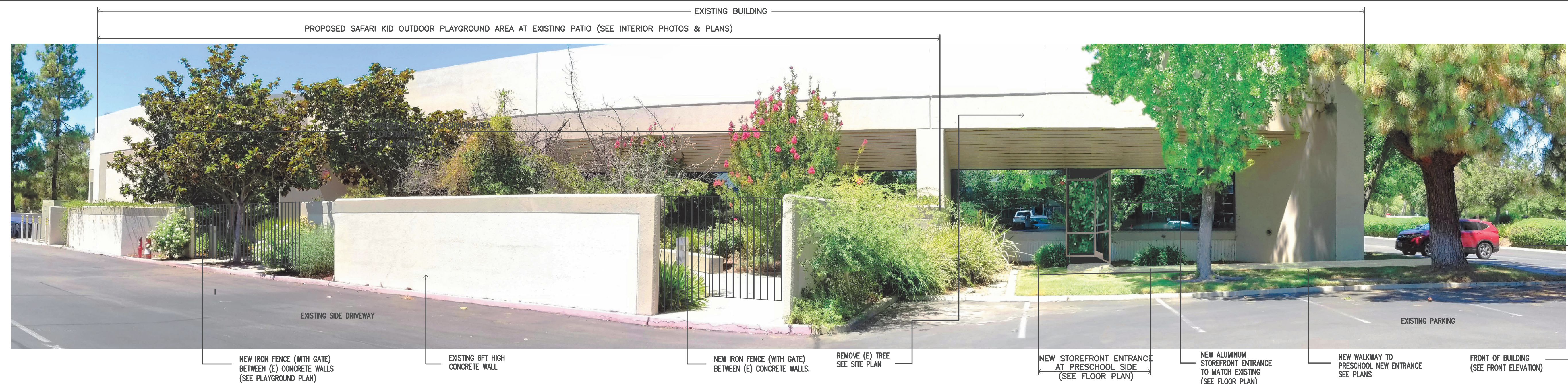
EXISTING CONCRETE BENCH
TO REMAIN

PROPOSED SAFARI KID OUTDOOR PLAYGROUND AREA AT EXISTING PATIO (SEE OUTDOOR PLAYGROUND PLAN)

PROPOSED SAFARI KID OUTDOOR PLAYGROUND AREA AT EXISTING PATIO (SEE OUTDOOR PLAYGROUND PLAN)

outdoor playground at existing patio

2



side elevations (exterior playground)

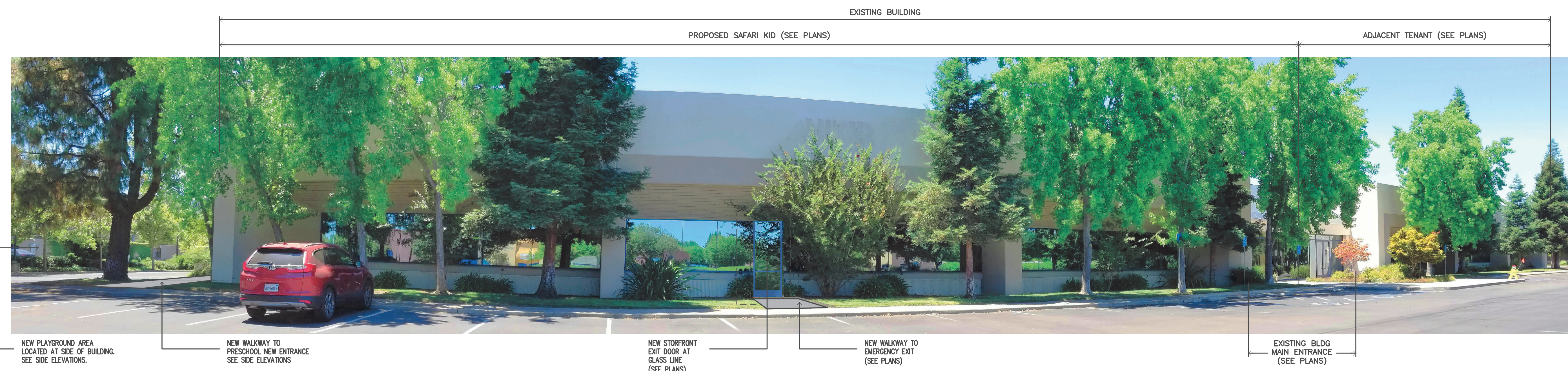
3

- general notes**
1. This sheet is part of a set and is not to be used alone.
 2. This sheet is not to be used for construction unless the architect's stamp and signature appear on drawings and status box indicates drawings have been released for construction.
 3. These plans and prints thereof, as instruments of service, are owned by the architect and are for use on this project only. Reproduction and/or distribution without the prior written consent of the architect is forbidden.
 4. Copyright Wayne Renschow, Architect 2018

Safari Kid
Preschool

Conditional Use
Permit Application

4464 Willow Road
Pleasanton, CA



front building elevation - facing Willow Road

4

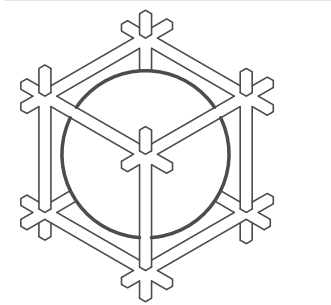
#	description	date
1	PLANNING REVISIONS	10/10/18

status	date
<input type="radio"/> client review	
<input type="radio"/> plan check	
<input type="radio"/> bidding	
<input type="radio"/> construction	

date	7/18/18
proj num	1705
proj mgr	WR
proj arch	WR
scale	

photos

sheet number
A2.2



wayne rensshaw
architect

111 W Saint John St. #950
San Jose, CA 95113
(408) 288 8033

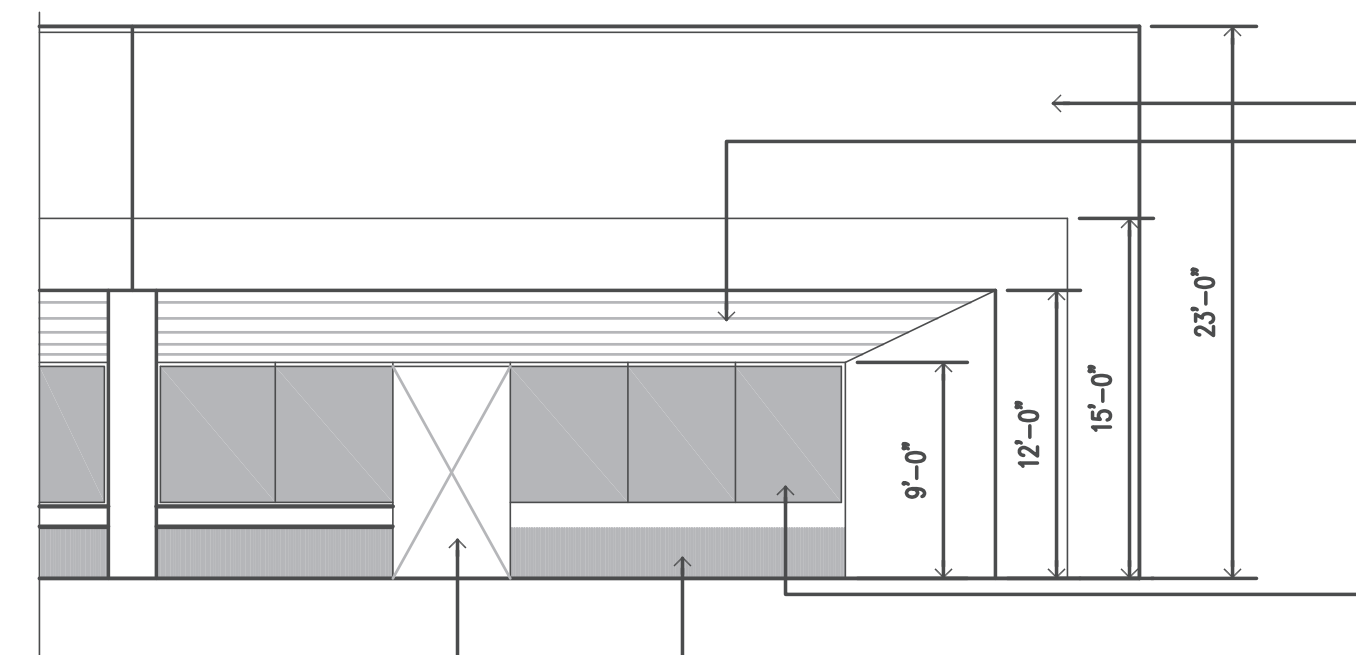
consultant

consultant



- EXISTING LIQUID AMBER TREE(S) TO BE REMOVED (SEE ARBORIST REPORT)
- LOCATION OF PROPOSED PRESCHOOL ENTRANCE
- EXISTING CONCRETE TILT-UP WALL
- EXISTING SOFFIT WITH STEEL PANELS, TO REMAIN
- EXISTING PINE TREE, TO REMAIN
- EXISTING RECESSED STOREFRONT WINDOW (RECESSED 6'-0" FROM FACE OF CONCRETE WALLS)
- EXISTING CONCRETE WINDOW SILL. SAW-CUT AND REMOVE SECTION AS NEEDED FOR NEW OPENING.
- LOCATION OF PROPOSED PRESCHOOL ENTRANCE

photo elevation at preschool entrance



- EXISTING CONCRETE TILT-UP WALL
- EXISTING SOFFIT WITH STEEL PANELS, TO REMAIN SLOPES INWARD FROM PANEL OPENING TO TOP OF WINDOWS, TYPICAL
- EXISTING RECESSED STOREFRONT WINDOW (RECESSED 6'-0" FROM FACE OF CONCRETE WALLS)
- EXISTING CONCRETE WINDOW SILL. SAW-CUT AND REMOVE SECTION AS NEEDED FOR NEW OPENING.
- LOCATION OF PROPOSED PRESCHOOL ENTRANCE OPENS INTO A SMALL RECESSED VESTIBULE WITH A WEST FACING ENTRANCE DOOR INTO PRESCHOOL LOBBY (SEE FLOOR PLAN) A WEST FACING DOOR IS PROPOSED FOR RELIGIOUS SIGNIFICANCE.

elevation at preschool entrance

- general notes**
1. This sheet is part of a set and is not to be used alone.
 2. This sheet is not to be used for construction unless the architect's stamp and signature appear on drawings and status box indicates drawings have been released for construction.
 3. These plans and prints thereof, as instruments of service, are owned by the architect and are for use on this project only. Reproduction and/or distribution without the prior written consent of the architect is forbidden.
 4. Copyright Wayne Renshaw, Architect 2018

Safari Kid Preschool

Conditional Use Permit Application

4464 Willow Road
Pleasanton, CA

#	description	date

release status	client review	date

date	--
proj num	1705
proj mgr	WR
proj arch	WR

scale

building elevation

sheet number
A3.1