

PROJECT SUMMARY

ASSESSOR'S PARCEL NUMBER:	949-2-1-2
ZONING:	FUD-MDR
EXISTING LOT SIZE:	47,485 SQ. FT. (1.09± AC.)
(E) DWELLING SQ. FT.:	2,865 SQ. FT.
NUMBER OF STORY:	1
(E) GARAGE SQ. FT.:	611 SQ. FT.
(E) LIVING SPACE SQ. FT.:	2,865 SQ. FT.
(E) F.A.R.	6.0%
(N) ADDITION SQ. FT.:	100 SQ. FT.
(N) TOTAL LIVING SPACE SQ. FT.:	3,565 SQ. FT.
(N) F.A.R.	1.5%

PROJECT STATEMENT:
PROPOSE TO CONSTRUCT 100 SQ. FT. NEW ADDITION ADJACENT (BEHIND) TO (E) GARAGE FOR STORAGE USE.

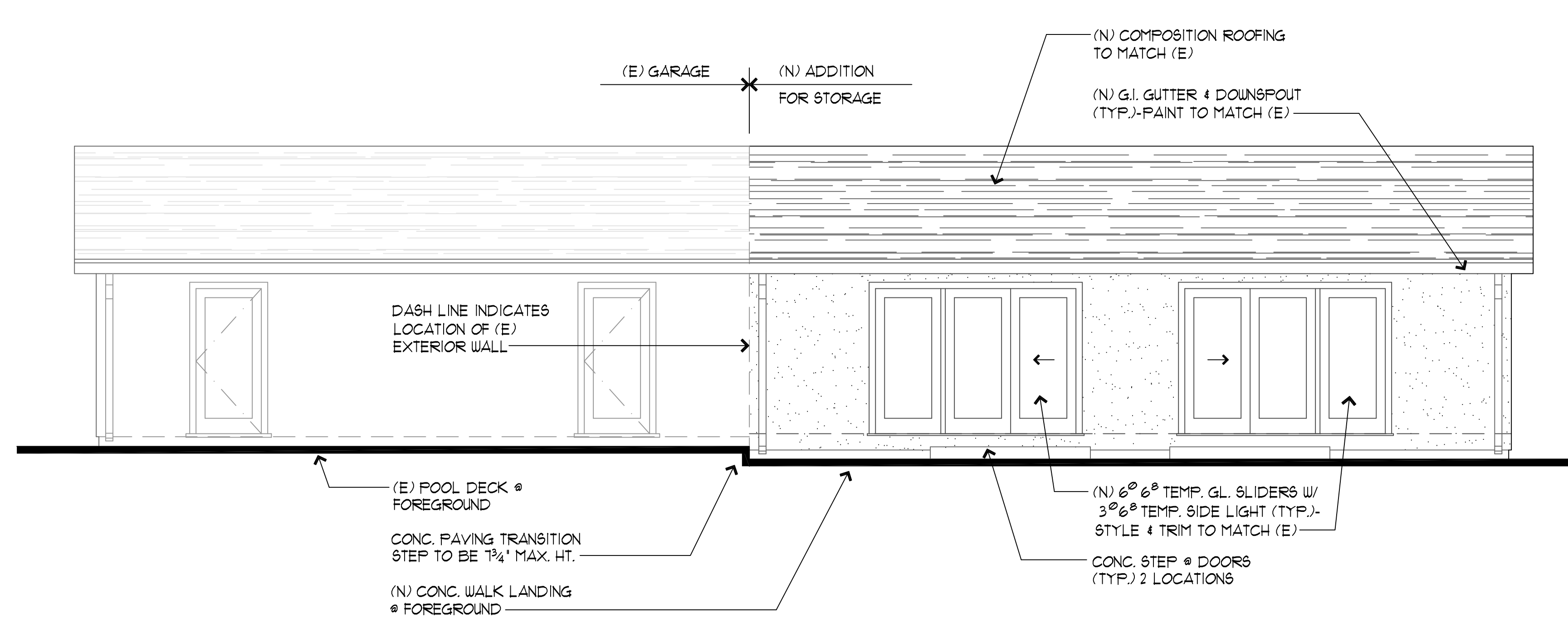
NOTE:
(E) SITE INFORMATION SHOWN IS SCHEMATIC, MEASUREMENTS PER FIELD VERIFICATION, NOT BY TOPOGRAPHIC SURVEY.
WATER OF THE (E) RESIDENCE IS CONNECTED TO THE CITY. SEWER IS CONNECTED TO THE COUNTY.

P19-0112 (CUP) / P19-0113 (ADR)

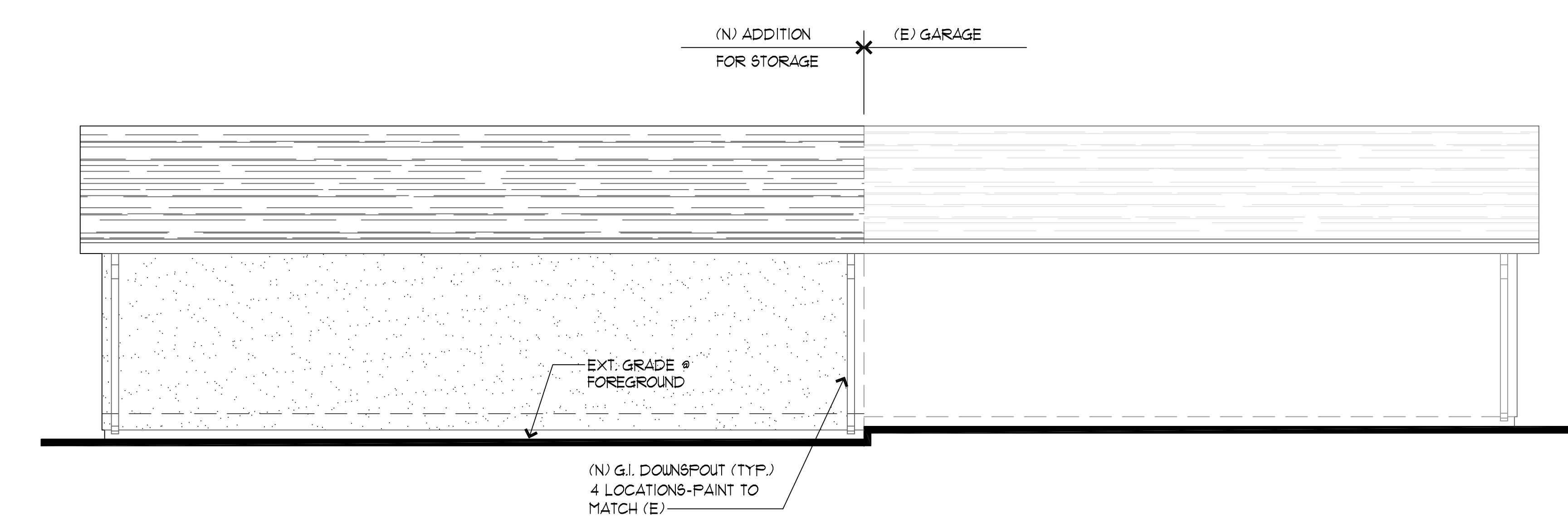
RECEIVED
April 26, 2019
CITY OF PLEASANTON
PLANNING DIVISION
EXHIBIT B

INFORMATION SITE PLAN

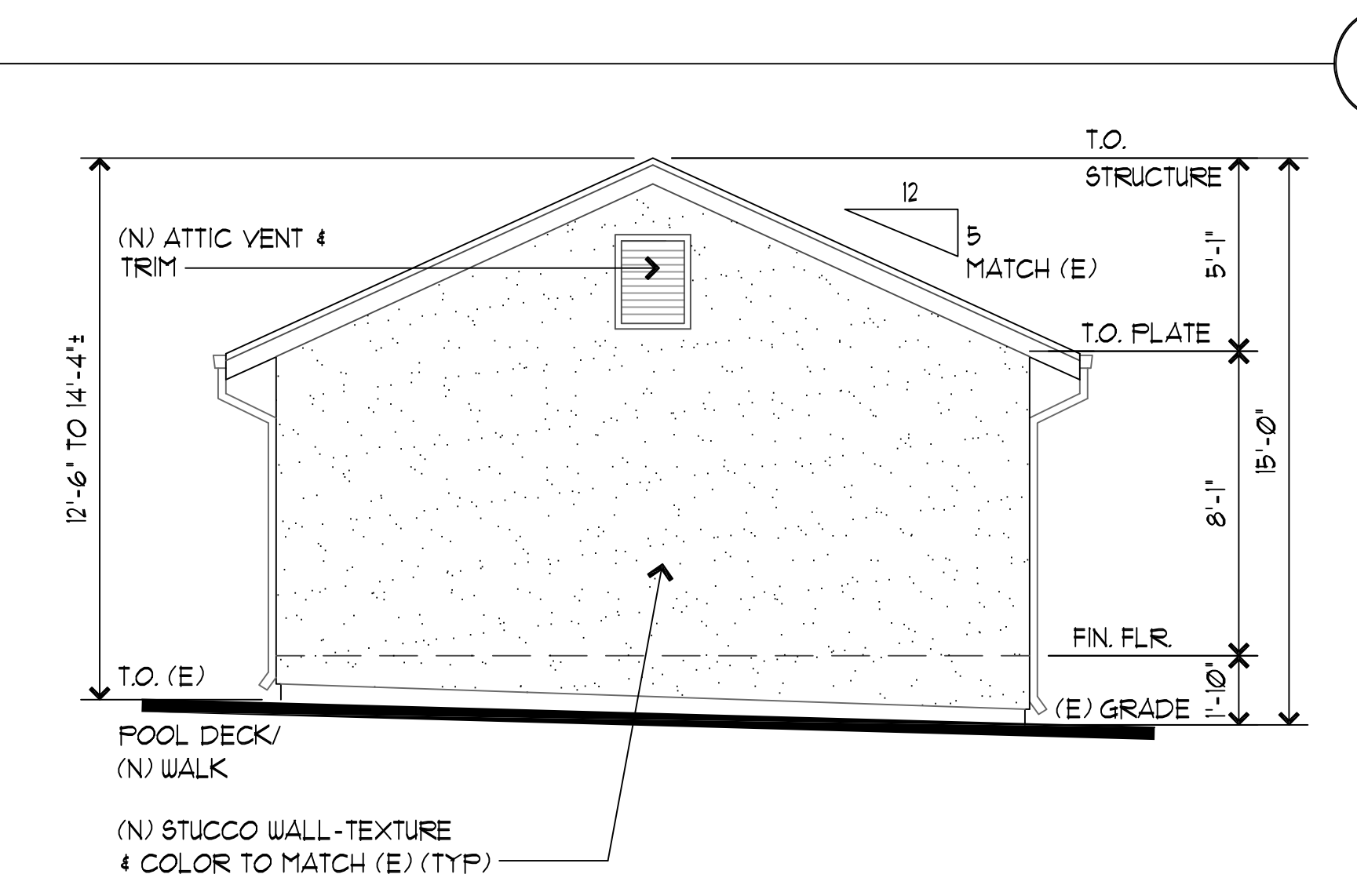
1/16" = 1'-0"



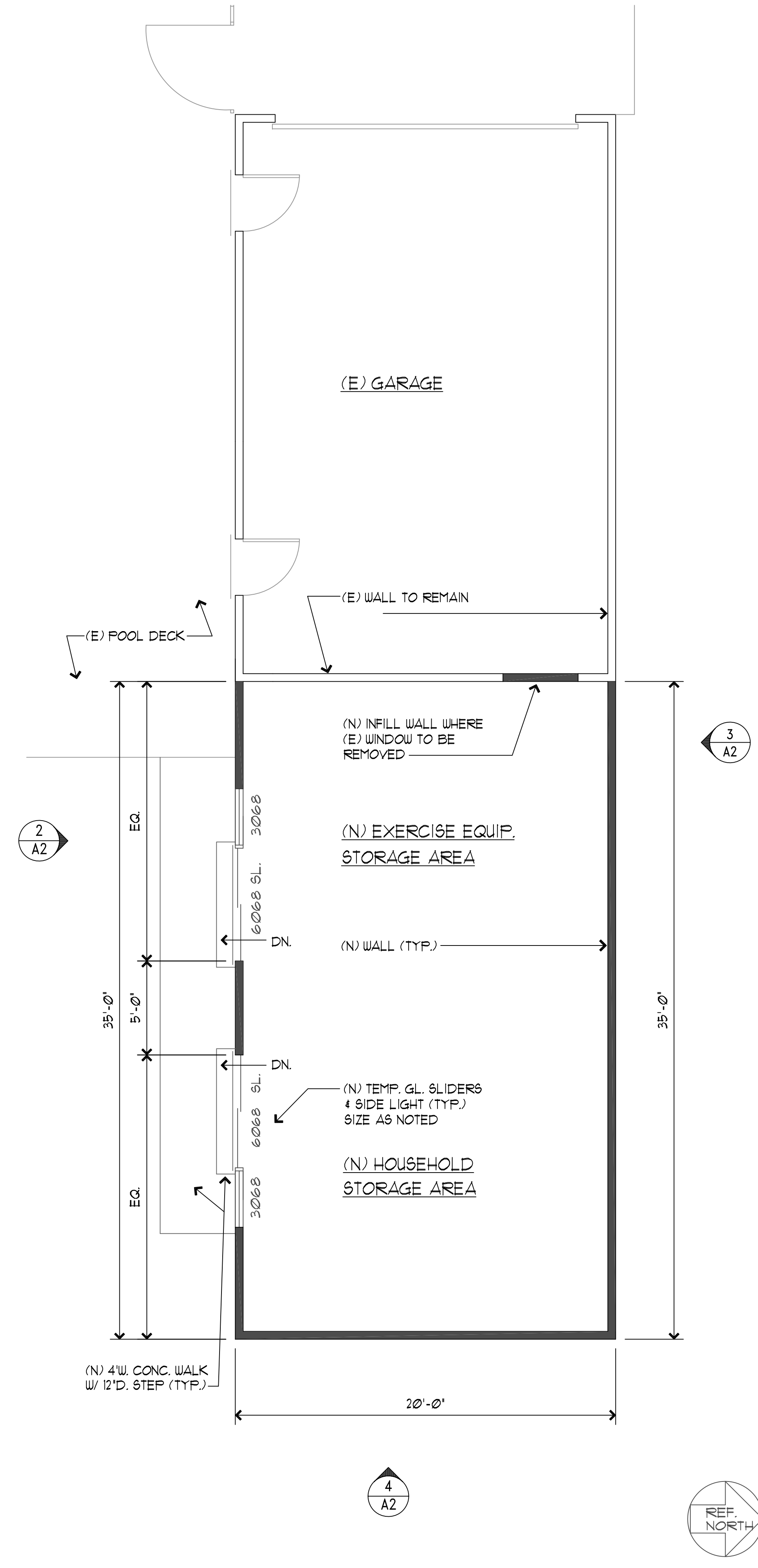
FRONT (SOUTH) ELEVATION



REAR (NORTH) ELEVATION



SIDE (EAST) ELEVATION



FLOOR PLAN AT ADDITION

2

3

4

1

