

# GreenPoint Rated Planning Scoresheet: Multifamily



**GreenPoint RATE**  
A PROGRAM OF BUILD IT GREEN

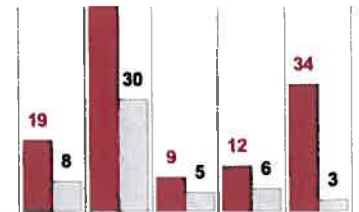
The GreenPoint Rated checklist tracks green features incorporated into the home. GreenPoint Rated is provided as a public service by Build It Green, a professional non-profit whose mission is to promote healthy, energy and resource efficient buildings in California.

The minimum requirements for a GreenPoint Rated home are: Earn a total of 50 points or more; obtain the following minimum points per category: Community (6), Energy (30), Indoor Air Quality/Health (5), Resources (6), and Water (3); and meet the prerequisites A2a, E2a, H4a. (for 2008 permitted projects), J1a, N1. and Q0.

Total Points Targeted: **136**

This checklist accommodates the verification of mandatory CALGreen measures but does not signify compliance unless accepted by jurisdictional authority. All CALGreen measures within the checklist must be selected as "Yes" or "n/a" for compliance with GreenPoint Rated. Build It Green is not a code enforcement agency.

The green building practices listed below are described in the GreenPoint Rated Multifamily Rating Manual. For more information please visit [www.builditgreen.org/greenpointrated](http://www.builditgreen.org/greenpointrated).



A home is only GreenPoint Rated if all features are verified by a Certified GreenPoint Rater through Build It Green.

Multifamily New Home 2.2 / 2008 Title 24

## Pleasanton Gateway - Apartments Pete Kennedy 3685 Planning Scoresheet

### AA. COMMUNITY DESIGN AND PLANNING

		Points Targeted	Community	Energy	IAQ/Health	Resources	Water
			Points Available per Measure				
<b>1. Develop Infill Sites</b>							
No	a. Project is an Urban Infill Development		1				
30	b. Conserve Resources by Increasing Density -15 Units Per Acre or Greater (1 Point for every additional 5 dwelling units/acre) Enter Project Density Number (In du/acre)	4	10				
No	c. Project Includes the Redevelopment of At Least One Existing Building				1		
No	d. Build on Designated Brownfield Site or City-Designated Redevelopment Area		1				
<b>2. Design for Walking &amp; Bicycling</b>							
Yes	a. Sidewalks Are Buffered from Roadways & Are 5 Feet Wide (8 Feet in Retail Areas)	1	1				
Yes	b. Install Traffic Calming Strategies	1	1				
Yes	c. Provide Dedicated, Covered & Secure Bicycle Storage for 15% of Residents	1	1				
No	d. Provide Secure Bicycle Storage for 5% of Non-Residential Tenant Employees & Visitors		1				
<b>3. Alternative Transportation</b>							
a. Site Has Pedestrian Access Within 1/2 Mile of Community Services:							
TIER 1: Enter number of services within 1/2 Mile:							
1) Day Care 2) Community Center 3) Public Park							
4) Drug Store 5) Restaurant 6) School							
7) Library 8) Farmer's Market 9) After School Programs							
10) Convenience Store Where Meat & Produce are Sold							
TIER 2: Enter number of services within 1/2 Mile:							
1) Bank 2) Place of Worship 3) Laundry/Cleaners							
4) Hardware 5) Theater/Entertainment 6) Fitness/Gym							
7) Post Office 8) Senior Care Facility 9) Medical/Dental							
10) Hair Care 11) Commercial Office or Major Employer							
12) Full Scale Supermarket							
i. 5 Services Listed Above (Tier 2 Services Count as 1/2 Service Value)		1	1				
ii. 10 Services Listed Above (Tier 2 Services Count as 1/2 Service Value)			1				
b. Proximity to Public Transit: Development Is Located Within							
i. 1/4 Mile of One Planned or Current Bus Line Stop		1	1				
ii. 1/2 Mile of a Major Transit Stop (Commuter Train/Light Rail Transit System OR Two or More Planned/Current Bus Line Stops)		1	1				
c. Reduced Parking Capacity							
i. Less than 1.5 Parking Spaces Per Unit			1				
ii. Less than 1.0 Parking Spaces Per Unit			1				
<b>4. Mixed-Use Developments</b>							
No	a. At least 2% of Development Floor Space Supports Mixed-Use (Non-Residential Tenants)		1				
No	b. Half of the Non-Residential Floor Space Is Dedicated to Community Services (See AA3a)		1				

# Pleasanton Gateway - Apartments

Pete Kennedy  
3685  
Planning Scoresheet

		Points Targeted	Community	Energy	IAQ/Health	Resources	Water
<b>5. Outdoor Gathering Places</b>							
Yes	a. Private or Semi-Public Outdoor Gathering Places for Residents (Minimum of 50 sf Per Unit) (mutually exclusive with AA5b)	1	1				
No	b. Outdoor Gathering Place of Compact Site Provides Natural Elements (mutually exclusive with AA5a) (Projects Must Be a Minimum of 50 du/acre)		1				
No	c. Public Outdoor Gathering Places have Direct Access to At Least Two Tier 1 Community Services (See AA3a)		1				
<b>6. Design for Safety and Vandalism Deterrence</b>							
Yes	a. Residence Entries Have Views to Callers (Windows or Double Peep Holes) & Can Be Seen By Neighbors	1	1				
Yes	b. All Main Entrances to the Building and Site are Prominent and Visible from the Street	1	1				
<b>7. Passive Solar Design</b>							
No	a. Provide Appropriate Orientation for Maximum Energy Efficiency			2			
No	b. Provide Appropriate Shading On All South-Facing Windows for Effective Passive Solar Control			1			
No	c. Provide Thermal Mass			2			
<b>8. Adaptable Buildings</b>							
a. include Universal Design Principles in Units							
TBD	i. 50% of Units		1				
TBD	ii. 80% of Units		1				
No	b. Live/Work Units Include A Dedicated Commercial Entrance		1				
<b>9. Affordability</b>							
a. Units are Dedicated to Households Making 80% or Less of AMI							
Yes	i. 10% of All Units	1	1				
No	ii. 25%		1				
No	iii. 50% or More		1				
No	b. Development Includes Multiple Bedroom Units (Minimum of 2 3-Bdrm Units At or Less Than 80% AMI)		1				
No	c. At least 20% of Units at 120% or Less of AMI are For-Sale		1				
<b>Total Available Points in Community Design and Planning: 42</b>		<b>14</b>					
<b>A. SITE</b>			Points Available per Measure				
<b>1. Protect Topsoil and Minimize Disruption of Existing Plants &amp; Trees</b>							
TBD	a. Protect Topsoil and Reuse After Construction		1			1	
TBD	b. Limit and Delineate Construction Footprint for Maximum Protection					1	
<b>2. Divert/Recycle Job Site Construction Waste (Including Green Waste and Existing Structures)</b>							
Yes	a. Required: Divert 50% (by weight) of All Construction & Demolition Waste (Recycling or Reuse) (CALGreen code)	Y					R
Yes	b. Divert 100% of Asphalt and Concrete and 65% (by weight) of Remaining Materials	2				2	
TBD	c. Divert 100% of Asphalt and Concrete and 80% (by weight) of Remaining Materials					2	
<b>3. Construction Environmental Quality Management Plan, Duct Sealing, and Pre-Occupancy Flush-Out</b> [*This credit is a requirement associated with PJ1: EPA IAP]							
Yes	a. Duct openings and other related air distribution component openings shall be covered during construction. (CALGreen code if applicable)	1			1		
TBD	b. Full environmental quality management plan and pre-occupancy flush out is conducted (Prerequisite is A5a)				1		
Yes	<b>4. Use Recycled Content Aggregate (Minimum 25%)</b>	1				1	
Yes	<b>5. Cool Site: Reduce Heat Island Effect on Site</b>	1	1				
<b>Total Available Points in Site: 11</b>		<b>5</b>					
<b>B. LANDSCAPE</b>			Points Available per Measure				
<b>1. Landscaping</b>							
45.9%	<i>Is the landscape ≥ 10% of the site area? Sites with less than 10% of the total site area dedicated to landscaping can only earn up to 4 points for measures B1a through B1g. Calculate the landscape area percentage by dividing the landscape area by the total site area. Include the building footprint(s) and all other developed portions of the site up to the site boundary.</i>						
Yes	a. Group Plants by Water Needs (Hydrozoning)	2					2
Yes	b. Mulch All Planting Beds to the Greater of 3 Inches or Local Water Ordinance Requirement	2					2
c. Construct Resource-Efficient Landscapes							

# Pleasanton Gateway - Apartments

## Pete Kennedy

### 3685

## Planning Scoresheet

		Points Targeted	Community	Energy	IAQ/Health	Resources	Water
Yes	i. No Invasive Species Listed by Cal-IPC Are Planted	1				1	
Yes	ii. No Plant Species will Require Shearing	1				1	
Yes	iii. 75% of Plants are Drought-tolerant, California Natives, Mediterranean or Other Appropriate Species	3					3
	d. Minimize Turf in Landscape Installed by Builder						
Yes	i. Turf Shall Not Be Installed on Slopes Exceeding 10% and No Overhead Sprinklers Installed in Areas Less than 8 Feet Wide	2					2
Yes	ii. Turf Is ≤ 33% of Landscaped Area	2					2
	e. Install High-Efficiency Irrigation Systems						
Yes	i. System Uses Only Low-Flow Drip, Bubblers or Sprinklers	2					2
Yes	ii. System Has Smart (Weather-based) Controller (CALGreen code if applicable)	3					3
Yes	f. Incorporate Two Inches of Compost in the Top 6 to 12 Inches of Soil	3					3
	g. Design Landscape to Meet Water Budget						
TBD	i. Install Irrigation System That Will Be Operated at <70% Reference ET (B1a. and B1b. are Prerequisites for Credit)						1
TBD	ii. Install Irrigation System That Will Be Operated at <50% Reference ET (B1a., B1b. and B1ei. are Prerequisites for Credit)						1
TBD	h. Incorporate Community Garden		1				
<b>2. Source Water Efficiency</b>							
Yes	a. Use Recycled Water for Indoor and/or Outdoor Water Use	2					2
No	b. Use Rainwater for Indoor and/or Outdoor Water Use						4
<b>3. Outdoor Play Structures and Outdoor Furniture</b>							
Yes	a. Play Structures & Surfaces Have an Average Recycled Content ≥20%	1				1	
Yes	b. Environmentally Preferable Exterior Site Furnishings	1				1	
Yes	<b>4. Reduce Light Pollution by Shielding Fixtures and Directing Light Downward</b>	1	1				
Total Available Points in Landscape: 33		<b>26</b>					

### C. DESIGN CONSIDERATIONS

			Points Available per Measure				
<b>1. Acoustics: Noise and Vibration Control</b>							
(minimum 2 points for credit, including 1 Tier 1 measure, maximum of 4 points)							
TBD	TIER 1: 1) Exterior Noise Reduction		1				
TBD	2) Loud Single-Event Noise Reduction in Noise-Sensitive Spaces		1				
TBD	3) Airborne and Structure-borne Noise Reduction (e.g., walls, floor-ceilings)		1				
TBD	4) Mechanical Ventilation Noise and Vibration Control		1				
TBD	5) Plumbing Noise and Vibration Reduction		1				
TBD	TIER 2: 1) Minimize Stair Impact Noise		0.5				
TBD	2) Minimize Floor Squeaks		0.5				
TBD	3) Minimize Trash Chute Noise		0.5				
TBD	4) Mixed-Use Noise and Vibration Reduction		0.5				
<b>2. Mixed-Use Design Strategies</b>							
No	a. Develop Green Tenant Improvement Requirements for Build Outs		2				
No	b. Commercial Loading Area Separated from Residential area				1		
No	c. Separate Mechanical and Plumbing Systems				1		
<b>3. Commissioning</b>							
TBD	a. Design Phase (Define Owner's Project Requirements, Basis of Design, and Develop Plan)			1	1		
TBD	b. Construction Phase (Perform Functional Testing)			2			
TBD	c. Post-Construction Phase (Verify Compliance, Commissioning Report, Training and Warranty Review)		1	1			
Total Available Points in Design Considerations: 14							

### D. FOUNDATION, STRUCTURAL FRAME & BUILDING ENVELOPE

			Points Available per Measure				
≥20%	<b>1. Replace Portland Cement in Concrete with Recycled Fly Ash and/or Slag (Minimum 20%)</b>	2				3	
TBD	<b>2. Design, Build and Maintain Structural Pest and Rot Controls (for low-rise projects)</b>				1	1	
<b>3. Construction Material Efficiencies</b>							
No	a. Wall and Floor Assemblies (excluding solid wall assemblies) are Delivered Panelized from Supplier (Minimum of 80% square feet)					1	
No	b. Modular Components are Delivered Assembled to the Project (Minimum 25%)						

# Pleasanton Gateway - Apartments

Pete Kennedy  
3685  
Planning Scoresheet

		Points Targeted	Community	Energy	IAQ/Health	Resources	Water
c. Optimal Value Engineering							
No	i. Studs at 24 Inch on Center at Interior Non-Bearing Walls and Top Floor					1	
Yes	ii. Door & Window Headers Sized for Load	1				1	
TBD	iii. Use Only Cripple Studs Required for Load					1	
<b>4. Use Engineered Lumber</b>							
TBD	a. Engineered Beams and Headers					1	
TBD	b. Wood I-Joists or Web Trusses for Floors					1	
TBD	c. Engineered Lumber for Roof Rafters					1	
TBD	d. Engineered or Finger-Jointed Studs for Vertical Applications					1	
TBD	e. Oriented Strand Board for Subfloor					1	
TBD	f. Oriented Strand Board for Wall and Roof Sheathing					1	
No	<b>5. Insulated Headers</b>			1			
<b>6. Use FSC-Certified Wood</b>							
TBD	a. Dimensional Lumber, Studs and Timber (Minimum 40%)					4	
TBD	b. Panel Products (Minimum 40%)					2	
TBD	<b>7. Energy Heels on Roof Trusses for Low-Rise Projects</b>			1			
<b>8. Use Solid Wall Systems (Includes SIPS, ICFs, &amp; Any Non-Stick Frame Assembly)</b>							
TBD	a. Floors					2	
TBD	b. Walls					2	
TBD	c. Roofs					1	
Total Available Points in Foundation, Structural Frame & Building Envelope: 34		3					
<b>E. EXTERIOR</b>			Points Available per Measure				
<b>1. Drainage Planes and Durable Siding</b>							
No	a. Install a Rain Screen Wall System					2	
Yes	b. Use Durable and Non-Combustible Siding Materials	1				1	
<b>2. Durable Roofing Options</b>							
Yes	a. <b>Required:</b> All Roofing Has 3-Year Subcontractor Warranty and a 20-Year Manufacturer Warranty	Y					R
Yes	b. Use Durable and Fire Resistant Roofing Materials or Assembly	1				1	
No	<b>3. Vegetated Roof (2 points for 25%, 4 points for 50%)</b>				4		
Total Available Points in Exterior: 8		2					
<b>F. INSULATION</b>			Points Available per Measure				
<b>1. Install Insulation with 75% Recycled Content</b>							
TBD	a. Walls					1	
TBD	b. Ceilings					1	
TBD	c. Floors					1	
Total Available Points in Insulation: 3							
<b>G. PLUMBING</b>			Points Available per Measure				
<b>1. Water Efficient Fixtures</b>							
a. Install High Efficiency Toilets (Dual Flush or ≤ 1.28 Gallons Per Flush (gpf)) (CALGreen code if applicable)							
Yes	i. In All Residences	1.5				1.496	
TBD	ii. In All Non-Residential Areas					0.504	
b. High Efficiency Urinals or No-Water Urinals Are Specified:							
TBD	i. Average Flush Rate is ≤0.5 gpf (CALGreen code if applicable)					1	
TBD	ii. Average Flush Rate is ≤0.1 gpf					1	
Yes	c. High Efficiency Showerheads Use ≤ 2.0 Gallons Per Minute (gpm) at 80 psi (CALGreen code if applicable)	3				3	
d. Flow Limiters Or Flow Control Valves Are Installed on All Faucets							
Yes	i. Residences: Kitchen - ≤ 1.8 gpm (CALGreen code if applicable)	0.75				0.748	
N/A	ii. Non-Residential Areas: Kitchen - ≤ 1.8 gpm (CALGreen code if applicable)					0.252	
Yes	iii. Residences: Bathroom Faucets- ≤ 1.5 gpm at 60psi	1				1	
TBD	iv. Non-Residential Areas: Bath Faucets - ≤ .5 gpm or .25 gal for meter faucets (CALGreen code if applicable)	N				0	
<b>2. Distribute Domestic Hot Water Efficiently (G2a is a Prerequisite for credit for G2 b-e. Maximum 5 Points)</b>							
TBD	a. Insulate All Hot Water Pipes [*This credit is a requirement associated with PJ1: EPA IAP]			1		1	
TBD	b. Use Engineered Parallel Plumbing					1	
TBD	Use Engineered Parallel Plumbing with Demand Controlled Circulation Loop(s)					1	

# Pleasanton Gateway - Apartments

## Pete Kennedy

### 3685

# Planning Scoresheet

		Points Targeted	Community	Energy	IAQ/Health	Resources	Water
TBD	d. Use Traditional Trunk, Branch and Twig Plumbing with Demand Controlled Circulation Loop(s)			1			2
TBD	e. Use Central Core Plumbing			1		1	1
Yes	<b>3. Water Submetering: Bill Tenants for Actual Usage</b>	4					4
Total Available Points in Plumbing: 18		10					

### H. Heating Ventilation and Air Conditioning

			Points Available per Measure				
No	<b>1. Install High Performing Zoned Radiant Hydronic Heating</b>				2		
TBD	<b>2. Install High Efficiency Air Conditioning with Environmentally Preferable Refrigerants</b>		1				
<b>3. Advanced Ventilation Practices for Cooling</b>							
No	a. Operable Windows or Skylights Are Placed To Induce Cross Ventilation In At Least One Room In 80% of Units			1	1		
b. Mechanical Ventilation System for Cooling:							
TBD	i. ENERGY STAR Ceiling Fans and Light Kits in Living Areas & All Bedrooms			1			
N/A	ii. Whole House Fan (CALGreen code if applicable)			1			
<b>4. Advanced Mechanical Ventilation for IAQ</b>							
Yes	a. <b>Required:</b> Compliance with ASHRAE 62.2 Mechanical Ventilation Standard (As Adopted in Title 24 Part 6) <i>N/A for projects permitted under 2005 Title 24.</i>	Y			R		
Yes	b. Advanced Ventilation Practices (Continuous Operation, Sone Limit, Minimum Efficiency, Minimum Ventilation Rate, Homeowner Instructions)	1			1		
TBD	c. Outdoor Air Ducted to Bedroom and Living Areas of Home				2		
Yes	d. ENERGY STAR Bathroom Fans on Timer or Humidistat (CALGreen code if applicable)	1			1		
TBD	<b>5. Garage Ventilation Fans Are Controlled by Carbon Monoxide Sensors</b> (Passive Ventilation Not Eligible) [*This credit is a requirement associated with PJ1: EPA IAP]				1		
Yes	<b>6. Install Carbon Monoxide Alarms</b> (or No Combustion Appliances in Living Space and No Attached Garage) [*This credit is a requirement associated with PJ1: EPA IAP]	1			1		
Total Available Points in Heating Ventilation and Air Conditioning: 13		3					

### I. RENEWABLE ENERGY

			Points Available per Measure				
No	<b>1. Solar Hot Water System Preheats Domestic Hot Water</b>				4		
<b>2. Offset a Percentage of the Project's Estimated Electricity Demand with Onsite Renewable Generation</b>							
No	a. 60% of Common Area Load		2	2			
No	b. 90% of Common Area Load		2	2			
No	c. 10% or More of Residential Units Load		2	2			
Total Available Points in Renewable Energy: 16							

### J. BUILDING PERFORMANCE

			Points Available per Measure				
<b>1. Building Performance Exceeds Title 24</b>							
<i>Enter the Percent Better Than Title 24 for Residential and Non-Residential Portions of the Project.</i>							
25.0%	a. <b>Required:</b> Residences: Minimum 15% Better Than Title 24. 2 Points for Every 1% Better Than Title 24	50		30+			
	b. Non-Residential Spaces: 1 Point for Every 1% Better Than Title 24, adjusted for square footage			1+			
<b>2. Building Envelope Diagnostic Evaluations</b>							
No	a. Duct Testing Results in Leakage < 6% [*This credit is a requirement associated with PJ1: EPA IAP]			1			
No	b. Blower Door Testing Results for Air Change per Hour is < 3.5 ACH <sub>50</sub> [*This credit is a requirement associated with PJ1: EPA IAP]			2			
No	c. Verify Quality of Insulation Installation & Thermal Bypass Checklist before Drywall [*This credit is a requirement associated with PJ1: EPA IAP]			1			
No	<b>3. Design and Build Near Zero Energy Homes</b> (Enter number of points, minimum of 2 and maximum of 6 points)			6			
Yes	<b>4. Title 24 Prepared and Signed by a CABEC Certified Energy Plans Examiner (CEPE)</b>	1		1			
<b>5. Participation in Utility Program with Third Party Plan Review</b>							
Yes	a. Energy Efficiency Program [*This credit is a requirement associated with PJ1: EPA IAP]	1		1			
TBD	b. Renewable Energy Program with Min. 30% Better Than Title 24 (High Performing Home)			1			

# Pleasanton Gateway - Apartments

Pete Kennedy  
3685  
Planning Scoresheet

		Points Targeted	Community	Energy	IAQ/Health	Resources	Water
Total Available Points in Building Performance: 43+		52					
<b>K. FINISHES</b>			Points Available per Measure				
<b>1. Entryways</b>							
TBD	a. Design Entryways to Reduce Tracked-In Contaminants for All Home Entrances				1		
TBD	b. Permanent Walk-Off Systems Are Provided at All Main Building Entrances & In Common Areas				1		
TBD	<b>2. Use Recycled Content Paint</b>					1	
<b>3. Low/No-VOC Paints &amp; Coatings</b> [*This credit is a requirement associated with PJ1: EPA IAP]							
a. Low-VOC Interior Wall/Ceiling Paints (<50 grams per liter (gpl) VOCs Regardless of Sheen) (CALGreen code if applicable)							
Yes	i. In All Residences	0.75			0.748		
N/A	ii. In All Non-Residential Areas				0.252		
b. Zero-VOC: Interior Wall/Ceiling Paints (<5 gpl Regardless of Sheen)							
TBD	i. In All Residences				0.748		
TBD	ii. In All Non-Residential Areas				0.252		
c. Use Low-VOC Coatings That Meet SCAQMD Rule 1113 (CALGreen code if applicable)							
Yes	i. In All Residences	1.5			1.496		
N/A	ii. In All Non-Residential Areas				0.504		
Yes	<b>4. Use Low VOC Caulks, Construction Adhesives and Sealants that Meet SCAQMD Rule 1168 (CALGreen code if applicable)</b>	1			1		
<b>5. Environmentally Preferable Materials for Interior Finish:</b> A) FSC-Certified Wood, B) Reclaimed Lumber, C) Rapidly Renewable, D) Recycled-Content, E) Finger-Jointed, or F) Local							
a. Residences: At Least 50% of Each Material:							
TBD	i. Cabinets				2.992		
TBD	ii. Interior Trim				1.496		
TBD	iii. Shelving				1.496		
TBD	iv. Doors				1.496		
TBD	v. Countertops				1.496		
b. Non-Residential Areas: At Least 50% of Each Material:							
TBD	i. Cabinets				1.008		
TBD	ii. Interior Trim				0.504		
TBD	iii. Shelving				0.504		
TBD	iv. Doors				0.504		
TBD	v. Countertops				0.504		
Yes	<b>6. Reduce Formaldehyde in Interior Finish – Meet Current CARB Airborne Toxic Control Measure (ATCM) for Composite Wood Formaldehyde Limits by Mandatory Compliance Dates (CALGreen code if applicable)</b> [*This credit is a requirement associated with PJ1: EPA IAP]	Y				0	
<b>7. Reduce Formaldehyde in Interior Finish - Exceed Current CARB ATCM for Composite Wood Formaldehyde Limits Prior to Mandatory Compliance Dates</b>							
a. Residences: At Least 90% of Each Material:							
TBD	i. Doors				0.748		
TBD	ii. Cabinets and Countertops				1.496		
TBD	iii. Interior Trim and Shelving				0.748		
b. Non-Residential Areas: At Least 90% of Each Material							
TBD	i. Doors				0.252		
TBD	ii. Cabinets and Countertops				0.504		
TBD	iii. Interior Trim and Shelving				0.252		
<b>8. Durable Cabinets</b>							
TBD	a. Residences				0.748		
TBD	b. Non-Residential Areas				0.252		
TBD	<b>9. At Least 25% of All Newly Supplied Interior Furniture has Environmentally Preferable Attributes</b>					1	
Total Available Points in Finishes: 26		3					
<b>L. FLOORING</b>			Points Available per Measure				

# Pleasanton Gateway - Apartments

Pete Kennedy  
3685  
Planning Scoresheet

	Points Targeted	Community	Energy	IAQ/Health	Resources	Water
<b>1. Use Environmentally Preferable Flooring (Minimum 15% of Floor Area)</b> A) FSC-Certified Wood, B) Reclaimed or Refinished, C) Rapidly Renewable, D) Recycled-Content, E) Exposed Concrete, or F) Local. <i>Flooring Adhesives Must Meet SCAQMD Rule 1168 for VOCs</i>						
TBD a. Residences					2.992	
TBD b. Non-Residential Areas					1.008	
<b>2. Low-Emitting Flooring</b> [*This credit is a requirement associated with PJ1: EPA IAP]						
Yes a. Residences: Low Emitting Flooring (50% Minimum) (Section 01350, CRI Green Label Plus, Floorscore)	1.5			1.496		
TBD b. Non-Residential Areas: Low-Emitting Flooring (50% Minimum) (Section 01350, CRI Green Label Plus, Floorscore)				0.504		
Yes <b>3. All carpet and 50% of Resilient Flooring is low emitting. (CALGreen code if applicable)</b>	Y			0		
<b>Total Available Points in Flooring: 6</b>		<b>2</b>				

<b>M. APPLIANCES &amp; LIGHTING</b>		Points Available per Measure				
<b>1. ENERGY STAR Appliances</b>						
Yes a. Install ENERGY STAR Dishwasher (Must Meet Current Specifications)		2		1		1
	b. install ENERGY STAR Clothes Washer					
Yes i. Meets ENERGY STAR and CEE Tier 2 Requirements (Modified Energy Factor ≥2.0; Water Factor ≤6.0) (Total 3 Points)		3		1		2
TBD ii Meets ENERGY STAR and CEE Tier 3 Requirements (Modified Energy Factor ≥2.2; Water Factor ≤4.5) (Total 5 Points)						2
	c. Install ENERGY STAR Refrigerators in All Locations					
Yes i. ENERGY STAR-Qualified & < 25 Cubic Feet Capacity		1		1		
TBD ii. ENERGY STAR-Qualified & < 20 Cubic Feet Capacity				1		
No <b>2. Common Laundry Facilities Are Provided for All Occupants</b>						1
TBD <b>3. Provide Built-In Recycling Center in Each Residential Unit</b>						1
	<b>4. Low-Mercury Lamps</b>					
TBD a. Low-Mercury Products Are Installed Wherever Linear Fluorescent Lamps Are Used or Replaced						1
TBD b. Low-Mercury Products Are Installed Wherever Compact Fluorescent Lamps Are Used or Replaced						1
	<b>5. Install High-Efficacy Lighting and Design Lighting System</b>					
Yes a. Install High-Efficacy Lighting		1		1		
TBD b. Install a Lighting System to IESNA Footcandle Standards or Hire Lighting Consultant				1		
No <b>6. Gearless Elevators Are Installed</b>					1	
<b>Total Available Points in Appliances &amp; Lighting: 16</b>		<b>7</b>				

<b>N. OTHER</b>		Points Available per Measure				
Yes <b>1. Required: Incorporate GreenPoint Rated Checklist in Blueprints</b> [*This credit is a requirement associated with PJ1: EPA IAP]		Y	R			
Yes <b>2. Pre-Construction Kick-Off Meeting with Rater and Subs</b>		1	1			
	<b>3. Operations &amp; Maintenance Manuals and Training</b> [*This credit is a requirement associated with PJ1: EPA IAP]					
Yes a. Provide O&M Manual to Building Maintenance Staff (CALGreen code if applicable)		1		1		
TBD b. Provide O&M Manual to Occupants and Orientation				1		1
TBD <b>4. Residents Are Offered Free or Discounted Transit Passes</b>			2			
TBD <b>5. Educational Signage of Project's Green Features</b>			1			
TBD <b>6. Install Home/Building System Monitor(s)</b>				1		
TBD <b>7. Use Vandalism Deterrence Practices and Develop Vandalism Management Plan</b>			1			
<b>Total Available Points in Other: 9</b>		<b>2</b>				

**O. (Not Used)**

<b>P. INNOVATIONS</b>		Points Available per Measure				
<b>A. Site</b>						
	<b>1. Stormwater Control: Prescriptive Path (Maximum of 3 Points, Mutually Exclusive With PA2)</b>					
TBD a. Use Permeable Paving for 25% of Driveways, Patios and Walkways			1			
Yes b. Install Bio-Retention and Filtration Features		2	2			

# Pleasanton Gateway - Apartments

Pete Kennedy  
3685  
Planning Scoresheet

		Points Targeted	Community	Energy	IAQ/Health	Resources	Water
TBD	c. Route Downspout Through Permeable Landscape		1				
TBD	d. Use Non-Leaching Roofing Materials		1				
TBD	e. Include Smart Street/Driveway Design		1				
2. Stormwater Control: Performance Path (Mutually Exclusive With PA1):							
TBD	Perform a Soil Percolation Test and Capture and Treat 85% of Total Annual Runoff		3				
<b>D. Foundation, Structural Frame and Building Envelope</b>							
TBD	1. Use Radon Resistant Construction [*This credit is a requirement associated with PJ1: EPA IAP]				2		
TBD	2. Install a Foundation Drainage System [*This credit is a requirement associated with PJ1: EPA IAP]					2	
TBD	3. Moisture Controlled Crawlspace [*For projects with crawlspace, this credit is a requirement associated with PJ1: EPA IAP]				2		
<b>E. Exterior</b>							
TBD	1. Flashing Installation Techniques Specified and Third-Party Verified [*This credit is a requirement associated with PJ1: EPA IAP]					1	
<b>H. Heating Ventilation and Air Conditioning</b>							
Yes	1. Design and Install HVAC System to ACCA Manual J, D, and S Recommendations (CALGreen code if applicable) [*This credit is a requirement associated with PJ1: EPA IAP]	4		4			
TBD	2. Pressure Relieve the Ductwork System (Mutually exclusive with H1) [*For projects with ducted systems, this credit is a requirement associated with PJ1: EPA IAP]			1			
Yes	3. Install High Efficiency HVAC Filter (MERV 6+, Mutually exclusive with H1.) [*This credit is a requirement associated with PJ1: EPA IAP]	1		1			
<b>J. Building Performance</b>							
TBD	1. Obtain EPA Indoor airPlus Certification (Total 39 possible points, not including Title 24 performance; read comment)			2			
TBD	2. Third-Party Testing of Mechanical Ventilation Rates for IAQ (Meet ASHRAE 62.2) [*This credit is a requirement associated with PJ1: EPA IAP]				2		
TBD	3. ENERGY STAR New Homes: High-Rise Pilot Program			1			
<b>K. Finishes</b>							
TBD	1. Use Moisture Resistant Material in Wet Areas: Kitchens, Bathrooms, Utility Rooms and Basements [*This credit is a requirement associated with PJ1: EPA IAP]				1	1	
TBD	2. Materials Meet SMaRT Criteria (Select number of points, up to 5 points)					5	
<b>N. Other</b>							
1. Innovation: List innovative measures that meet green building objectives. Enter in the number of points in each category in the blue cells for a maximum of 4 points for the measure. The "points achieved" column will be automatically fill in based on the sum of the points in each category. Points and measures will be evaluated by Build It Green.							
TBD	Innovation: Enter up to 4 Points in blue cells at right. Enter description here		0	0	0	0	0
TBD	Innovation: Enter up to 4 Points in blue cells at right. Enter description here		0	0	0	0	0
TBD	Innovation: Enter up to 4 Points in blue cells at right. Enter description here		0	0	0	0	0
TBD	Innovation: Enter up to 4 Points in blue cells at right. Enter description here		0	0	0	0	0
TBD	Innovation: Enter up to 4 Points in blue cells at right. Enter description here		0	0	0	0	0
Total Available Points in Other: 43+		7					
<b>Q. California CALGreen CODE</b>			Points Available per Measure				
No	0. Home meets all applicable CALGreen measures listed in above Sections A - P of the GreenPoint Rated checklist.	N	R				
The following measures are mandatory in the CALGreen code and do not earn points in the GreenPoint Rated Checklist but have been included in the Checklist for the convenience of jurisdictions.							
The GreenPoint Rater is not a code enforcement official. The measures in this section may be verified by the GreenPoint Rater at their own discretion and/or discretion of the building official.							
TBD	1. CALGreen 4.106.2 Storm water management during construction.	N					
TBD	2. CALGreen 4.106.3 Design for surface water drainage away from buildings.	N					



# Pleasanton Gateway - Apartments

## Pete Kennedy

### 3685

## Planning Scoresheet

		Points Targeted	Community	Energy	IAQ/Health	Resources	Water
TBD	3. CALGreen 4.303.1 As an alternative to prescriptive compliance, a 20% reduction in baseline water use shall be demonstrated through calculation	N					
TBD	4. CALGreen 4.406.1 Joints and openings. Annular spaces around pipes, electric cables, conduits, or other openings in plates at exterior walls shall be protected	N					
TBD	5. CALGreen 4.503.1 Gas fireplace shall be a direct-vent sealed-combustion type. Woodstove or pellet stove shall comply with US EPA Phase II emission limits	N					
TBD	6. CALGreen 4.505.2 Vapor retarder and capillary break is installed at slab on grade foundations.	N					
TBD	7. CALGreen 4.505.3 19% moisture content of building framing materials	N					
TBD	8. CALGreen 702.1 HVAC system installers are trained and certified in the proper installation of HVAC systems.	N					
Total Available Points in California CALGreen CODE: 0							

## Summary

Total Available Points	275+	76	88+	35	83	52
Minimum Points Required	50	6	30	5	6	3
<b>Total Points Targeted</b>	<b>136</b>	<b>19</b>	<b>62</b>	<b>9</b>	<b>12</b>	<b>34</b>

### Project Has Met All Minimum Requirements

- Total Project Score of 412 out of 50 Points
- Required measures:
  - A2a Site waste diversion by weight
  - A2a All Shingle Roofing Has 3-Yr. Subcontractor Warranty & 20 Yr. Manufacturer Warranty
  - A4a Compliance with ASHRAE 90.2 Mechanical Ventilation Standards
  - J1a 15% above Title 24
  - #11, incorporate GreenPoint Rated Checklist in Blueprints
- Minimum points in specific categories:
  - Community (0 points)
  - Energy (30 points)
  - IAQ/Health (5 points)
  - Resources (6 points)
  - Water (3 points)



# GreenPoint Rated Checklist: Single Family



**GreenPointRATED**  
A PROGRAM OF BUILD IT GREEN

Total Points Targeted: **126**

The GreenPoint Rated checklist tracks green features incorporated into the home. GreenPoint Rated is provided as a public service by Build It Green, a professional non-profit whose mission is to promote healthy, energy and resource efficient buildings in California.

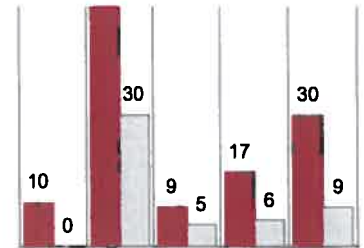
The minimum requirements of GreenPoint Rated are: verification of 50 or more points; Earn the following minimum points per category: Energy (30), Indoor Air Quality/Health (5), Resources (6), and Water (9); and meet the prerequisites A.2.a, H10a., J.2., N.1, and Q0.

This checklist accommodates the verification of mandatory CALGreen measures but does not signify compliance unless accepted by jurisdictional authority. All CALGreen measures within the checklist must be selected as "Yes" or "n/a" for compliance with GreenPoint Rated. Build It Green is not a code enforcement agency.

The criteria for the green building practices listed below are described in the GreenPoint Rated Single Family Rating Manual. For more information please visit [www.bullditgreen.org/greenpointrated](http://www.bullditgreen.org/greenpointrated)

A home is only GreenPoint Rated if all features are verified by a Certified GreenPoint Rater through Build It Green.

Single Family New Home 4.2 / 2008 Title 24



## Pleasanton Gateway - Row House

Pete Kennedy

3685

## Planning Scoresheet

		Points Targeted	Community	Energy	IAQ/Health	Resources	Water
<b>A. SITE</b>			Possible Points				
<b>1. Protect Topsoil and Minimize Disruption of Existing Plants &amp; Trees</b>							
TBD	a. Protect Topsoil and Reuse after Construction	0	1				1
TBD	b. Limit and Delineate Construction Footprint for Maximum Protection	0					1
<b>2. Divert/Recycle Job Site Construction Waste (Including Green Waste and Existing Structures)</b>							
Yes	a. Required: Divert 50% (by weight) of All Construction and Demolition Waste (Recycling or Reuse) (CALGreen code)	Y				R	
Yes	b. Divert 100% of Asphalt and Concrete and 65% (by weight) of Remaining Materials	2				2	
TBD	c. Divert 100% of Asphalt and Concrete and 80% (by weight) of Remaining Materials	0				2	
<b>3. Use Recycled Content Aggregate (Minimum 25%)</b>							
Yes	a. Walkway and Driveway Base	1				1	
Yes	b. Roadway Base	1				1	
No	<b>4. Cool Site: Reduce Heat Island Effect On Site</b>	0	1				
<b>5. Construction Environmental Quality Management Plan, Duct Sealing, and Pre-Occupancy Flush-Out [*This credit is a requirement associated with J4: EPA IAP]</b>							
Yes	a. Duct openings and other related air distribution component openings shall be covered during construction (CALGreen code if applicable)	1			1		
TBD	b. Full environmental quality management plan and pre-occupancy flush out is conducted (Prerequisite is A5a)	0			1		
Total Points Available in Site = 12		<b>5</b>					
<b>B. FOUNDATION</b>			Points Available Per Measure				
≥20%	<b>1. Replace Portland Cement in Concrete with Recycled Fly Ash and/or Slag (Minimum 20%)</b>	1				2	
No	<b>2. Use Frost-Protected Shallow Foundation in Cold Areas (CEC Climate Zone 16)</b>	0				2	
TBD	<b>3. Use Radon Resistant Construction</b> [*This credit is a requirement associated with J4: EPA IAP]	0			2		
TBD	<b>4. Install a Foundation Drainage System</b> [*This credit is a requirement associated with J4: EPA IAP]	0				2	

# Pleasanton Gateway - Row House

## Pete Kennedy

### 3685

# Planning Scoresheet

		Points Targeted	Community	Energy	IAQ/Health	Resources	Water
TBD	<b>5. Moisture Controlled Crawlspace</b> [*This credit is a requirement associated with J4: EPA IAP]	0			2		
	<b>6. Design and Build Structural Pest Controls</b>						
TBD	a. Install Termite Shields & Separate All Exterior Wood-to-Concrete Connections	0				1	
TBD	b. All Plants Have Trunk, Base, or Stem Located At Least 36 Inches from Foundation	0				1	
Total Points Available in Foundation = 12		1					

### C. LANDSCAPE

			Points Available Per Measure				
49.1%	Percentage of landscape area. (Projects with less than 15% of the total site area (i.e. total lot size) as landscape area are capped at 6 points for the following measures: C1 through C7 and C9 through C11.						
Yes	<b>1. Group Plants by Water Needs (Hydrozoning)</b>	2					2
Yes	<b>2. Mulch All Planting Beds to the Greater of 3 Inches or Local Water Ordinance Requirement</b>	2					2
	<b>3. Construct Resource-Efficient Landscapes</b>						
Yes	a. No Invasive Species Listed by Cal-IPC Are Planted	1					1
Yes	b. No Plant Species Will Require Shearing	1			1		
Yes	c. 75% of Plants Are Drought Tolerant, California Natives or Mediterranean Species or Other Appropriate Species	3					3
	<b>4. Minimize Turf In Landscape Installed by Bullder</b>						
Yes	a. Turf Shall Not Be Installed on Slopes Exceeding 10% and No Overhead Sprinklers Installed in Areas Less than 8 Feet Wide	2					2
TBD	b. Turf is Small Percentage of Landscaped Area (2 Points for ≤25%, 4 Points for ≤10%)	0					4
TBD	<b>5. Plant Shade Trees</b>	0	1	1			1
	<b>6. Install High-Efficiency Irrigation Systems</b>						
Yes	a. System Uses Only Low-Flow Drip, Bubblers, or Sprinklers	2					2
Yes	b. System Has Smart (Weather-Based) Controller (CALGreen code if applicable)	3					3
Yes	<b>7. Incorporate Two Inches of Compost in the Top 6 to 12 Inches of Soil</b>	3					3
	<b>8. Rain Water Harvesting System</b>						
No	a. Cistern(s) is Less Than 750 Gallons	0					1
No	b. Cistern(s) is 750 to 2,500 Gallons	0					1
No	c. Cistern(s) is Greater Than 2,500 Gallons	0					1
Yes	<b>9. Irrigation System Uses Rocyced Wastewater</b>	1					1
No	<b>10. Submetering for Landscape Irrigation</b>	0					1
	<b>11. Design Landscape to Meet Water Budget</b>						
TBD	a. Install Irrigation System That Will Be Operated at ≤70% Reference ET (Prerequisites for Credit are C1. and C2.)	0					1
TBD	b. Install Irrigation System That Will Be Operated at ≤50% Reference ET (Prerequisites for Credit are C1, C2, and C6a or C6b.)	0					1
Yes	<b>12. Use Environmentally Preferable Materials for 70% of Non-Plant Landscape Elements and Fencing</b> A) FSC-Certified Wood, B) Reclaimed, C) Rapidly Renewable, D) Recycled-Content E) Finger-Jointed or F) Local	1				1	
Yes	<b>13. Reduce Light Pollution by Shielding Fixtures and Directing Light Downward</b>	1	1				
Total Points Available in Landscape = 35		22					

### D. STRUCTURAL FRAME & BUILDING ENVELOPE

			Points Available Per Measure				
	<b>1. Apply Optimal Value Engineering</b>						
TBD	a. Place Joists, Rafters and Studs at 24-Inch On Center	0				3	
TBD	b. Door and Window Headers are Sized for Load	0				1	
TBD	c. Use Only Cripple Studs Required for Load	0				1	
	<b>2. Construction Material Efficiencies</b>						

# Pleasanton Gateway - Row House

Pete Kennedy

3685

## Planning Scoresheet

		Points Targeted	Community	Energy	IAQ/Health	Resources	Water
TBD	a. Wall and Floor Assemblies (Excluding Solid Wall Assemblies) are Delivered Panelized from Supplier (Minimum of 80% Square Feet)	0				2	
TBD	b. Modular Components Are Delivered Assembled to the Project (Minimum 25%)	0				6	
<b>3. Use Engineered Lumber</b>							
TBD	a. Engineered Beams and Headers	0				1	
Yes	b. Wood I-Joists or Web Trusses for Floors	1				1	
TBD	c. Engineered Lumber for Roof Rafters	0				1	
TBD	d. Engineered or Finger-Jointed Studs for Vertical Applications	0				1	
Yes	e. Oriented Strand Board for Subfloor	1				1	
Yes	f. Oriented Strand Board for Wall and Roof Sheathing	1				1	
TBD	<b>4. Insulated Headers</b>	0		1			
<b>5. Use FSC-Certified Wood</b>							
TBD	a. Dimensional Lumber, Studs and Timber (Minimum 40%)	0				6	
TBD	b. Panel Products (Minimum 40%)	0				3	
<b>6. Use Solid Wall Systems (Includes SIPS, ICFs, &amp; Any Non-Stick Frame Assembly)</b>							
TBD	a. Floors	0				2	
TBD	b. Walls	0				2	
TBD	c. Roofs	0				1	
TBD	<b>7. Energy Heels on Roof Trusses (75% of Attic Insulation Height at Outside Edge of Exterior Wall)</b>	0		1			
<b>8. Install Overhangs and Gutters</b>							
TBD	a. Minimum 16-Inch Overhangs and Gutters	0				1	
TBD	b. Minimum 24-Inch Overhangs and Gutters	0		1			
<b>9. Reduce Pollution Entering the Home from the Garage</b> [*This credit is a requirement associated with J4: EPA IAP]							
TBD	a. Install Garage Exhaust Fan OR Build a Detached Garage	0			1		
TBD	b. Tightly Seal the Air Barrier between Garage and Living Area (Performance Test Required)	0			1		
Total Points Available in Structural Frame and Building Envelope = 39		3					
<b>E. EXTERIOR</b>			Points Available Per Measure				
Yes	<b>1. Use Environmentally Preferable Decking</b>	2				2	
TBD	<b>2. Flashing Installation Techniques Specified and Third-Party Verified</b> [*This credit is a requirement associated with J4: EPA IAP]	0				1	
TBD	<b>3. Install a Rain Screen Wall System</b>	0				2	
Yes	<b>4. Use Durable and Non-Combustible Siding Materials</b>	1				1	
Yes	<b>5. Use Durable and Fire Resistant Roofing Materials or Assembly</b>	2				2	
Total Points Available in Exterior = 8		5					
<b>F. INSULATION</b>			Points Available Per Measure				
<b>1. Install Insulation with 75% Recycled Content</b>							
TBD	a. Walls	0				1	
TBD	b. Ceilings	0				1	
TBD	c. Floors	0				1	
Total Points Available in Insulation = 3		0					
<b>G. PLUMBING</b>			Points Available Per Measure				
<b>1. Distribute Domestic Hot Water Efficiently (Max. 5 points, G1a. Is a Prerequisite for G1b-e)</b>							
TBD	a. Insulate All Hot Water Pipes [*This credit is a requirement associated with J4: EPA IAP]	0		1			1
TBD	b. Use Engineered Parallel Plumbing	0					1
TBD	c. Use Engineered Parallel Plumbing with Demand Controlled Circulation Loop(s)	0					1
TBD	d. Use Traditional Trunk, Branch and Twig Plumbing with Demand Controlled Circulation Loop(s)	0		1			2

# Pleasanton Gateway - Row House

Pete Kennedy

3685

## Planning Scoresheet

Pleasanton Gateway - Row House		Points Targeted	Community	Energy	IAQ/Health	Resources	Water
Pete Kennedy							
3685							
Planning Scoresheet							
TBD	e. Use Central Core Plumbing	0		1		1	1
<b>2. Water Efficient Fixtures</b>							
Yes	a. High Efficiency Showerheads ≤2.0 Gallons Per Minute (gpm) at 80 psi. (Multiple showerheads shall not exceed maximum flow rates) (CALGreen code if applicable)	3					3
Yes	b. High Efficiency Bathroom Faucets ≤ 1.5 gpm at 60psi (CALGreen code)	1					1
Yes	c. High Efficiency Kitchen and Utility Faucets ≤1.8 gpm (CALGreen code if applicable)	1					1
Yes	<b>3. Install Only High Efficiency Toilets (Dual-Flush or ≤1.28 Gallons Per Flush (gpf)) (CALGreen code if applicable)</b>	2					2
Total Points Available in Plumbing = 12		7					
<b>H. HEATING, VENTILATION &amp; AIR CONDITIONING</b>			Points Available Per Measure				
<b>1. Properly Design HVAC System and Perform Diagnostic Testing</b>							
Yes	a. Design and Install HVAC System to ACCA Manual J, D, and S Recommendations (CALGreen code if applicable) [*This credit is a requirement associated with J4: EPA IAP]	4		4			
TBD	b. Test Total Supply Air Flow Rates [*This credit is a requirement associated with J4: EPA IAP]	0		1			
TBD	c. Third Party Testing of Mechanical Ventilation Rates for IAQ (meet ASHRAE 62.2)	0		1			
<b>2. Install Sealed Combustion Units</b> [*This credit is a requirement associated with J4: EPA IAP]							
TBD	a. Furnaces	0			2		
TBD	b. Water Heaters	0			2		
TBD	<b>3. Install High Performing Zoned Hydronic Radiant Heating</b>	0		1	1		
TBD	<b>4. Install High Efficiency Air Conditioning with Environmentally Preferable Refrigerants</b>	0	1				
<b>5. Design and Install Effective Ductwork</b>							
TBD	a. Install HVAC Unit and Ductwork within Conditioned Space	0		1			
TBD	b. Use Duct Mastic on All Duct Joints and Seams [*This credit is a requirement associated with J4: EPA IAP]	0		1			
TBD	c. Pressure Relieve the Ductwork System [*This credit is a requirement associated with J4: EPA IAP]	0		1			
Yes	<b>6. Install High Efficiency HVAC Filter (MERV 6+)</b> [*This credit is a requirement associated with J4: EPA IAP]	1			1		
TBD	<b>7. No Fireplace OR Install Sealed Gas Fireplace(s) with Efficiency Rating &gt;60% using CSA Standards</b> [*This credit is a requirement associated with J4: EPA IAP]	0			1		
Yes	<b>8. Install ENERGY STAR Bathroom Fans on Timer or Humidistat (CALGreen code if applicable)</b>	1			1		
<b>9. Install Mechanical Ventilation System for Cooling (Max. 4 Points)</b>							
TBD	a. Install ENERGY STAR Ceiling Fans & Light Kits in Living Areas & All Bedrooms	0		1			
N/A	b. Install Whole House Fan (Credit Not Available if H9c Chosen) (CALGreen code if applicable)	0		1			
TBD	c. Automatically Controlled Integrated System with Variable Speed Control	0		3			
<b>10. Advanced Mechanical Ventilation for IAQ</b>							
Yes	a. <b>Required:</b> Compliance with ASHRAE 62.2 Mechanical Ventilation Standards (as adopted in Title 24 Part 6) [*This credit is a requirement associated with J4: EPA IAP]	Y			R		
TBD	b. Advanced Ventilation Practices (Continuous Operation, Sone Limit, Minimum Efficiency, Minimum Ventilation Rate, Homeowner Instructions)	0			1		
TBD	c. Outdoor Air Ducted to Bedroom and Living Areas of Home	0			2		
Yes	<b>11. Install Carbon Monoxide Alarm(s) (or No Combustion Appliances in Living Space and No Attached Garage)</b> [*This credit is a requirement associated with J4: EPA IAP]	1			1		
Total Points Available in Heating, Ventilation and Air Conditioning = 27		7					
<b>I. RENEWABLE ENERGY</b>			Points Available Per Measure				

# Pleasanton Gateway - Row House

Pete Kennedy

3685

## Planning Scoresheet

		Points Targeted	Community	Energy	IAQ/Health	Resources	Water
Yes	1. Pre-Plumb for Solar Water Heating	1				1	
Yes	2. Install Wiring Conduit for Future Photovoltaic Installation & Provide 200 ft <sup>2</sup> of South-Facing Roof	1				1	
	3. Offset Energy Consumption with Onsite Renewable Generation (Solar PV, Solar Thermal, Wind) <i>Enter % total energy consumption offset, 1 point per 4% offset</i>	0		25			
Total Available Points in Renewable Energy = 27		2					
J. BUILDING PERFORMANCE		Points Available Per Measure					
1. Building Envelope Diagnostic Evaluations							
TBD	a. Verify Quality of Insulation Installation & Thermal Bypass Checklist before Drywall [*This credit is a requirement associated with J4: EPA IAP]	0		1			
TBD	b. House Passes Blower Door Test [*This credit is a requirement associated with J4: EPA IAP]	0		1			
TBD	c. Blower Door Results are Max 2.5 ACH <sub>50</sub> for Unbalanced Systems (Supply or Exhaust) or Max 1.0 ACH <sub>50</sub> for Balanced Systems (2 Total Points for J1b. and J1c.)	0		1			
TBD	d. House Passes Combustion Safety Backdraft Test	0			1		
25%	2. <b>Required: Building Performance Exceeds Title 24 (Minimum 15%)</b> <i>(Enter the Percent Better Than Title 24, Points for Every 1% Better Than Title 24)</i>	50		≥30			
TBD	3. Design and Build Near Zero Energy Homes <i>(Enter number of points, minimum of 2 and maximum of 6 points)</i>	0		6			
TBD	4. Obtain EPA Indoor airPlus Certification <i>(Total 42 points, not including Title 24 performance; read comment)</i>	0			2		
Yes	5. Title 24 Prepared and Signed by a CABEC Certified Energy Plans Examiner (CEPE)	1		1			
6. Participation in Utility Program with Third Party Plan Review							
Yes	a. Energy Efficiency Program [*This credit is a requirement associated with J4: EPA IAP]	1		1			
TBD	b. Renewable Energy Program with Min. 30% Better Than Title 24 (High Performing Home)	0		1			
Total Available Points in Building Performance = 45+		52					
K. FINISHES		Points Available Per Measure					
TBD	1. Design Entryways to Reduce Tracked-In Contaminants	0			1		
2. Use Low-VOC or Zero-VOC Paint (Maximum 3 Points)							
Yes	a. Low-VOC Interior Wall/Ceiling Paints (CALGreen code if applicable) (<50 Grams Per Liter (gpl) VOCs Regardless of Sheen) [*This credit is a requirement associated with J4: EPA IAP]	1			1		
TBD	b. Zero-VOC: Interior Wall/Ceiling Paints (<5 gpl VOCs Regardless of Sheen)	0			2		
Yes	3. Use Low-VOC Coatings that Meet SCAQMD Rule 1113 (CALGreen code if applicable) [*This credit is a requirement associated with J4: EPA IAP]	2			2		
Yes	4. Use Low-VOC Caulks, Construction Adhesives and Sealants that Meet SCAQMD Rule 1168 (CALGreen code if applicable)	2			2		
TBD	5. Use Recycled-Content Paint	0				1	
6. Use Environmentally Preferable Materials for Interior Finish A) FSC-Certified Wood, B) Reclaimed, C) Rapidly Renewable, D) Recycled-Content or E) Finger-Jointed F) Local							
TBD	a. Cabinets (50% Minimum)	0				3	
TBD	b. Interior Trim (50% Minimum)	0				2	
TBD	c. Shelving (50% Minimum)	0				2	
TBD	d. Doors (50% Minimum)	0				2	
TBD	e. Countertops (50% Minimum)	0				2	

# Pleasanton Gateway - Row House

Pete Kennedy  
3685

## Planning Scoresheet

		Points Targeted	Community	Energy	IAQ/Health	Resources	Water
Yes	<b>7. Reduce Formaldehyde in Interior Finish – Meet Current CARB Airborne Toxic Control Measure (ATCM) for Composite Wood Formaldehyde Limits by Mandatory Compliance Dates (CALGreen code if applicable) [*This credit is a requirement associated with J4: EPA IAP]</b>	Y			0		
	<b>8. Reduce Formaldehyde In Interior Finish - Exceed Current CARB ATCM for Composite Wood Formaldehyde Limits Prior to Mandatory Compliance Dates</b>						
TBD	a. Doors (90% Minimum)	0			1		
TBD	b. Cabinets & Countertops (90% Minimum)	0			2		
TBD	c. Interior Trim and Shelving (90% Minimum)	0			1		
TBD	<b>9. After Installation of Finishes, Test of Indoor Air Shows Formaldehyde Level &lt;27ppb</b>	0			3		
Total Available Points in Finishes = 27		5					

L. FLOORING			Points Available Per Measure				
TBD	<b>1. Use Environmentally Preferable Flooring ( Minimum 15% Floor Area)</b> A) FSC-Certified Wood, B) Reclaimed or Refinished, C) Rapidly Renewable, D) Recycled-Content, E) Exposed Concrete, F) Local. <i>Flooring Adhesives Must Meet SCAQMD Rule 1168 for VOCs.</i>	0				4	
No	<b>2. Thermal Mass Floors (Minimum 50%)</b>	0		1			
TBD	<b>3. Low Emitting Flooring (Section 01350, CRI Green Label Plus, Floorscore [*This credit is a requirement associated with J4: EPA IAP])</b>	0			3		
Yes	<b>4. All carpet and 50% of Resilient Flooring is low emitting. (CALGreen code if applicable)</b>	Y					
Total Available Points in Flooring = 8		0					

M. APPLIANCES AND LIGHTING			Points Available Per Measure				
Yes	<b>1. Install ENERGY STAR Dishwasher (Must Meet Current Specifications)</b>	2		1			1
	<b>2. Install ENERGY STAR Clothes Washer</b>						
Yes	a. Meets ENERGY STAR and CEE Tier 2 Requirements (Modified Energy Factor 2.0, Water Factor 6.0 or less)	3		1			2
TBD	b. Meets ENERGY STAR and CEE Tier 3 Requirements (Modified Energy Factor 2.2, Water Factor 4.5 or less)	0					2
	<b>3. Install ENERGY STAR Refrigerator</b>						
Yes	a. ENERGY STAR Qualified & < 25 Cubic Feet Capacity	1		1			
TBD	b. ENERGY STAR Qualified & < 20 Cubic Feet Capacity	0		1			
	<b>4. Install Built-In Recycling Center or Composting Center</b>						
TBD	a. Built-In Recycling Center	0				1	
TBD	b. Built-In Composting Center	0				1	
	<b>5. Install High-Efficacy Lighting and Design Lighting System</b>						
TBD	a. Install High-Efficacy Lighting	0		1			
TBD	b. Install a Lighting System to IESNA Footcandle Standards or Hire Lighting Consultant	0		1			
Total Available Points in Appliances and Lighting = 13		6					

N. OTHER			Points Available Per Measure				
Yes	<b>1. Required: Incorporate GreenPoint Rated Checklist in Blueprints</b> [*This credit is a requirement associated with J4: EPA IAP]	Y					R
Yes	<b>2. Pre-Construction Kick-Off Meeting with Rater and Subs</b>	1	1				
TBD	<b>3. Homebuilder's Management Staff are Certified Green Building Professionals</b>	0	1				
	<b>4. Develop Homeowner Education</b>						
Yes	a. Develop Homeowner Manual of Green Features/Benefits (CALGreen code if applicable) [*This credit is a requirement associated with J4: EPA IAP]	2		1			1



# Pleasanton Gateway - Row House

Pete Kennedy

3685

## Planning Scoresheet

		Points Targeted	Community	Energy	IAQ/Health	Resources	Water
TBD	b. Conduct Educational Walkthroughs (Prerequisite is N4a) [*This credit is a requirement associated with J4: EPA IAP]	0			1		
TBD	5. Install a Home System Monitor OR Participate in a Time-of-Use Pricing Program	0		1			
Total Available Points in Other = 6		3					

### O. COMMUNITY DESIGN & PLANNING

<b>1. Develop Infill Sites</b>							
TBD	a. Project is an Urban Infill Development	0	1			1	
No	b. Home(s)/Development is Located within 1/2 Mile of a Major Transit Stop	0	2				
No	<b>2. Build on Designated Brownfield Site</b>	0	3				
<b>3. Cluster Homes &amp; Keep Size In Check</b>							
TBD	a. Cluster Homes for Land Preservation	0	1			1	
No	b. Conserve Resources by Increasing Density (10 Units per Acre or Greater)	0	2			2	
0	c. Home Size Efficiency	0				9	
<b>4. Design for Walking &amp; Bicycling</b>							
5	a. Site Has Pedestrian Access Within 1/2 Mile of Community Services: TIER 1: Enter Number of Services Within 1/2 Mile 1) Day Care 2) Community Center 3) Public Park 4) Drug Store 5) Restaurant 6) School 7) Library 8) Farmer's Market 9) After School Programs 10) Convenience Store Where Meat & Produce are Sold						
7	TIER 2: Enter Number of Services Within 1/2 Mile 1) Bank 2) Place of Worship 3) Laundry/Cleaners 4) Hardware 5) Theater/Entertainment 6) Fitness/Gym 7) Post Office 8) Senior Care Facility 9) Medical/Dental 10) Hair Care 11) Commercial Office or Major Employer 12) Full Scale Supermarket						
	i. 5 Services Listed Above (Tier 2 Services Count as 1/2 Service Value)	1	1				
	ii. 10 Services Listed Above (Tier 2 Services Count as 1/2 Service Value)	0	1				
No	b. Development is Connected with A Dedicated Pedestrian Pathway to Places of Recreational Interest Within 1/4 mile	0	1				
Yes	c. Install Traffic Calming Strategies (Minimum of Two): - Designated Bicycle Lanes are Present on Roadways; - Ten-Foot Vehicle Travel Lanes; - Street Crossings Closest to Site are Located Less Than 300 Feet Apart; - Streets Have Rumble Strips, Bulbouts, Raised Crosswalks or Refuge Islands	2	2				
<b>5. Design for Safety &amp; Social Gathering</b>							
Yes	a. All Home Front Entrances Have Views from the Inside to Outside Callers	1	1				
Yes	b. All Home Front Entrances Can be Seen from the Street and/or from Other Front Doors	1	1				
No	c. Orient Porches (min. 100sf) to Streets and Public Spaces	0	1				
Yes	d. Development Includes a Social Gathering Space	1	1				
<b>6. Design for Diverse Households (6a. Is a Prerequisite for 6b. and 6c.)</b>							
TBD	a. All Homes Have At Least One Zero-Step Entrance	0	1				
TBD	b. All Main Floor Interior Doors & Passageways Have a Minimum 32-Inch Clear Passage Space	0	1				
TBD	c. Locate Half-Bath on the Ground Floor	0	1				
No	d. Provide Full-Function Independent Rental Unit	0	1				
Total Achievable Points in Community Design & Planning = 35		6					

### P. INNOVATION

		Possible Points					
<b>A. Site</b>							
<b>1. Stormwater Control: Prescriptive Path (Maximum of 3 Points, Mutually Exclusive with PA2.)</b>							
TBD	a. Use Permeable Paving for 25% of Driveways, Patios and Walkways	0	1				
Yes	b. Install Bio-Retention and Filtration Features	2	2				

# Pleasanton Gateway - Row House

Pete Kennedy

3685

## Planning Scoresheet

		Points Targeted	Community	Energy	IAQ/Health	Resources	Water
TBD	c. Route Downspout Through Permeable Landscape	0	1				
TBD	d. Use Non-Leaching Roofing Materials	0	1				
TBD	e. Include Smart Street/Driveway Design	0	1				
TBD	2. Stormwater Control: Performance Path (Mutually Exclusive with PA1): Perform Soil Percolation Test and Capture and Treat 85% of Total Annual Runoff	0	3				
<b>C. Landscape</b>							
TBD	1. Meet Local Landscape Program Requirement	0					2
<b>D. Structural Frame &amp; Building Envelope</b>							
1. Design, Build and Maintain Structural Pest and Rot Controls							
TBD	a. Locate All Wood (Siding, Trim, Structure) At Least 12" Above Soil	0				1	
TBD	b. All Wood Framing 3 Feet from the Foundation is Treated with Borates (or Use Factory-Impregnated Materials) OR Walls are Not Made of Wood	0				1	
TBD	2. Use Moisture Resistant Materials in Wet Areas: Kitchen, Bathrooms, Utility Rooms, and Basements [*This credit is a requirement associated with J4: EPA IAP]	0			1	1	
<b>E. Exterior</b>							
TBD	1. Vegetated Roof (Minimum 25%)	0	2	2			
<b>G. Plumbing</b>							
TBD	1. Greywater Pre-Plumbing (Includes Washing Machine at Minimum)	0					1
TBD	2. Greywater System Operational (Includes Washing Machine at Minimum)	0					2
TBD	3. Innovative Wastewater Technology (Constructed Wetland, Sand Filter, Aerobic System)	0					1
TBD	4. Composting or Waterless Toilet	0					2
TBD	5. Install Drain Water Heat-Recovery System	0		1			
TBD	6. Install a Hot Water Desuperheater	0		2			
<b>H. Heating, Ventilation, and Air Conditioning</b>							
TBD	1. Humidity Control Systems (Only in California Humid/Marine Climate Zones 1,3,5,6,7) [*This credit is a requirement associated with J4: EPA IAP]	0			1		
TBD	2. Design HVAC System to Manual T for Register Design	0		1			
<b>K. Finishes</b>							
TBD	1. Materials Meet SMaRT Criteria (Select the number of points, up to 5 points)	0				5	
<b>N. Other</b>							
TBD	1. Detailed Durability Plan and Third-Party Verification of Plan Implementation	0				2	
2. Educational Signage of Project's Green Features							
TBD	a. Promotion of Green Building Practices	0	1				
TBD	b. Installed Green Building Educational Signage	0	1				
3. Innovation: List innovative measures that meet green building objectives. Enter in the number of points in each category for a maximum of 4 points for the measure in the blue cells. Points achieved column will be automatically fill in based on the sum of the points in each category. Points and measures will be evaluated by Build It Green.							
TBD	Innovation: Enter up to 4 Points at right. Enter description here	0	0	0	0	0	0
TBD	Innovation: Enter up to 4 Points at right. Enter description here	0	0	0	0	0	0
TBD	Innovation: Enter up to 4 Points at right. Enter description here	0	0	0	0	0	0
TBD	Innovation: Enter up to 4 Points at right. Enter description here	0	0	0	0	0	0
TBD	Innovation: Enter up to 4 Points at right. Enter description here	0	0	0	0	0	0
Total Achievable Points in Innovation = 33+		2					
<b>Q. CALIFORNIA CALGreen CODE</b>			Possible Points				
Yes	0. Home meets all applicable CALGreen measures listed in above Sections A - P of the GreenPoint Rated checklist.	Y	R				

Pleasanton Gateway - Row House		Points Targeted	Community	Energy	IAQ/Health	Resources	Water
Pete Kennedy 3685							
Planning Scoresheet							
<p>The following measures are mandatory in the CALGreen code and do not earn points in the GreenPoint Rated Checklist, but have been included in the Checklist for the convenience of jurisdictions.</p> <p>The GreenPoint Rater is not a code enforcement official. The measures in this section may be verified by the GreenPoint Rater at their own discretion and/or discretion of the building official.</p>							
TBD	1. CALGreen 4.106.2 Storm water management during construction.	N					
TBD	2. CALGreen 4.106.3 Design for surface water drainage away from buildings.	N					
TBD	3. CALGreen 4.303.1 As an alternative to prescriptive compliance, a 20% reduction in baseline water use shall be demonstrated through calculation	N					
TBD	4. CALGreen 4.406.1 Joints and openings. Annular spaces around pipes, electric cables, conduits, or other openings in plates at exterior walls shall be protected	N					
TBD	5. CALGreen 4.503.1 Gas fireplace shall be a direct-vent sealed-combustion type. Woodstove or pellet stove shall comply with US EPA Phase II emission limits	N					
TBD	6. CALGreen 4.505.2 Vapor retarder and capillary break is installed at slab on grade foundations.	N					
TBD	7. CALGreen 4.505.3 19% moisture content of building framing materials	N					
TBD	8. CALGreen 702.1 HVAC system installers are trained and certified in the proper installation of HVAC systems.	N					
Total Achievable Points in California Green Code = 0		0					
Summary							
Total Available Points			44	96+	44	109	59
Minimum Points Required			0	30	5	6	9
Total Points Targeted		126	10	60	9	17	30

**Project has met all minimum requirements**

- Total Project Score of At Least 80 Points
- Required measures:
  - A3a: 50% waste diversion by weight
  - E10a: Compliance with ASHRAE 62.2 Mechanical Ventilation Standards
  - J2: 15% above Title 24
  - N1: Incorporate GreenPoint Rated Checklist into blueprints
- Minimum points in specific categories:
  - Energy (30 points)
  - IAQ/Health (5 points)
  - Resources (6 points)
  - Water (5 points)
- All Applicable CALGreen measures in Sections A-P



# GreenPoint Rated Checklist: Single Family



**GreenPointRATED**  
A PROGRAM OF BUILD IT GREEN

The GreenPoint Rated checklist tracks green features incorporated into the home. GreenPoint Rated is provided as a public service by Build It Green, a professional non-profit whose mission is to promote healthy, energy and resource efficient buildings in California.

The minimum requirements of GreenPoint Rated are: verification of 50 or more points; Earn the following minimum points per category: Energy (30), Indoor Air Quality/Health (5), Resources (6), and Water (9); and meet the prerequisites A.2.a, H10a., J.2., N.1, and Q0.

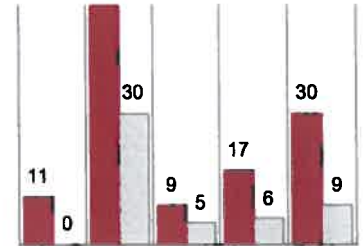
Total Points Targeted: **127**

This checklist accommodates the verification of mandatory CALGreen measures but does not signify compliance unless accepted by jurisdictional authority. All CALGreen measures within the checklist must be selected as "Yes" or "n/a" for compliance with GreenPoint Rated. Build It Green is not a code enforcement agency.

The criteria for the green building practices listed below are described in the GreenPoint Rated Single Family Rating Manual. For more information please visit [www.builditgreen.org/greenpointrated](http://www.builditgreen.org/greenpointrated)

A home is only GreenPoint Rated if all features are verified by a Certified GreenPoint Rater through Build It Green.

Single Family New Home 4.2 / 2008 Title 24



Pleasanton Gateway - Single Family		Points Targeted	Community	Energy	IAQ/Health	Resources	Water
Pete Kennedy 3685							
Planning Scoresheet							
<b>A. SITE</b>			Possible Points				
<b>1. Protect Topsoil and Minimize Disruption of Existing Plants &amp; Trees</b>							
TBD	a. Protect Topsoil and Reuse after Construction	0	1				1
TBD	b. Limit and Delineate Construction Footprint for Maximum Protection	0					1
<b>2. Divert/Recycle Job Site Construction Waste (Including Green Waste and Existing Structures)</b>							
Yes	a. Required: Divert 50% (by weight) of All Construction and Demolition Waste (Recycling or Reuse) (CALGreen code)	Y				R	
Yes	b. Divert 100% of Asphalt and Concrete and 65% (by weight) of Remaining Materials	2				2	
TBD	c. Divert 100% of Asphalt and Concrete and 80% (by weight) of Remaining Materials	0				2	
<b>3. Use Recycled Content Aggregate (Minimum 25%)</b>							
Yes	a. Walkway and Driveway Base	1				1	
Yes	b. Roadway Base	1				1	
No	<b>4. Cool Site: Reduce Heat Island Effect On Site</b>	0	1				
<b>5. Construction Environmental Quality Management Plan, Duct Sealing, and Pre-Occupancy Flush-Out [*This credit is a requirement associated with J4: EPA IAP]</b>							
Yes	a. Duct openings and other related air distribution component openings shall be covered during construction (CALGreen code if applicable)	1			1		
TBD	b. Full environmental quality management plan and pre-occupancy flush out is conducted (Prerequisite is A5a)	0			1		
Total Points Available in Site = 12		<b>5</b>					
<b>B. FOUNDATION</b>			Points Available Per Measure				
≥20%	<b>1. Replace Portland Cement In Concrete with Recycled Fly Ash and/or Slag (Minimum 20%)</b>	1				2	
No	<b>2. Use Frost-Protected Shallow Foundation in Cold Areas (CEC Climate Zone 16)</b>	0				2	
TBD	<b>3. Use Radon Resistant Construction</b> [*This credit is a requirement associated with J4: EPA IAP]	0			2		
TBD	<b>4. Install a Foundation Drainage System</b> [*This credit is a requirement associated with J4: EPA IAP]	0				2	

# Pleasanton Gateway - Single Family

Pete Kennedy

3685

## Planning Scoresheet

		Points Targeted	Community	Energy	IAQ/Health	Resources	Water
TBD	<b>5. Moisture Controlled Crawlspace</b> [*This credit is a requirement associated with J4: EPA IAP]	0			2		
TBD	<b>6. Design and Build Structural Pest Controls</b>	0				1	
TBD	a. Install Termite Shields & Separate All Exterior Wood-to-Concrete Connections	0				1	
TBD	b. All Plants Have Trunk, Base, or Stem Located At Least 36 Inches from Foundation	0				1	
Total Points Available in Foundation = 12		1					
<b>C. LANDSCAPE</b>			Points Available Per Measure				
40.6%	Percentage of landscape area. (Projects with less than 15% of the total site area (i.e. total lot size) as landscape area are capped at 6 points for the following measures: C1 through C7 and C9 through C11.						
Yes	<b>1. Group Plants by Water Needs (Hydrozoning)</b>	2					2
Yes	<b>2. Mulch All Planting Beds to the Greater of 3 Inches or Local Water Ordinance Requirement</b>	2					2
Yes	<b>3. Construct Resource-Efficient Landscapes</b>						
Yes	a. No Invasive Species Listed by Cal-IPC Are Planted	1					1
Yes	b. No Plant Species Will Require Shearing	1			1		
Yes	c. 75% of Plants Are Drought Tolerant, California Natives or Mediterranean Species or Other Appropriate Species	3					3
Yes	<b>4. Minimize Turf In Landscape Installed by Builder</b>						
Yes	a. Turf Shall Not Be Installed on Slopes Exceeding 10% and No Overhead Sprinklers Installed in Areas Less than 8 Feet Wide	2					2
TBD	b. Turf is Small Percentage of Landscaped Area (2 Points for ≤25%, 4 Points for ≤10%)	0					4
TBD	<b>5. Plant Shade Trees</b>	0	1	1			1
Yes	<b>6. Install High-Efficiency Irrigation Systems</b>						
Yes	a. System Uses Only Low-Flow Drip, Bubblers, or Sprinklers	2					2
Yes	b. System Has Smart (Weather-Based) Controller (CALGreen code if applicable)	3					3
Yes	<b>7. Incorporate Two Inches of Compost in the Top 6 to 12 Inches of Soil</b>	3					3
No	<b>8. Rain Water Harvesting System</b>						
No	a. Cistern(s) is Less Than 750 Gallons	0					1
No	b. Cistern(s) is 750 to 2,500 Gallons	0					1
No	c. Cistern(s) is Greater Than 2,500 Gallons	0					1
Yes	<b>9. Irrigation System Uses Recycled Wastewater</b>	1					1
No	<b>10. Submetering for Landscape Irrigation</b>	0					1
TBD	<b>11. Design Landscape to Meet Water Budget</b>						
TBD	a. Install Irrigation System That Will Be Operated at ≤70% Reference ET (Prerequisites for Credit are C1. and C2.)	0					1
TBD	b. Install Irrigation System That Will Be Operated at ≤50% Reference ET (Prerequisites for Credit are C1, C2, and C6a or C6b.)	0					1
Yes	<b>12. Use Environmentally Preferable Materials for 70% of Non-Plant Landscape Elements and Fencing</b> A) FSC-Certified Wood, B) Reclaimed, C) Rapidly Renewable, D) Recycled-Content E) Finger-Jointed or F) Local	1				1	
Yes	<b>13. Reduce Light Pollution by Shielding Fixtures and Directing Light Downward</b>	1	1				
Total Points Available in Landscape = 35		22					
<b>D. STRUCTURAL FRAME &amp; BUILDING ENVELOPE</b>			Points Available Per Measure				
TBD	<b>1. Apply Optimal Value Engineering</b>						
TBD	a. Place Joists, Rafters and Studs at 24-Inch On Center	0				3	
TBD	b. Door and Window Headers are Sized for Load	0				1	
TBD	c. Use Only Cripple Studs Required for Load	0				1	

# Pleasanton Gateway - Single Family

Pete Kennedy

3685

## Planning Scoresheet

		Points Targeted	Community	Energy	IAQ/Health	Resources	Water
<b>2. Construction Material Efficiencies</b>							
TBD	a. Wall and Floor Assemblies (Excluding Solid Wall Assemblies) are Delivered Panelized from Supplier (Minimum of 80% Square Feet)	0				2	
TBD	b. Modular Components Are Delivered Assembled to the Project (Minimum 25%)	0				6	
<b>3. Use Engineered Lumber</b>							
TBD	a. Engineered Beams and Headers	0				1	
Yes	b. Wood I-Joists or Web Trusses for Floors	1				1	
TBD	c. Engineered Lumber for Roof Rafters	0				1	
TBD	d. Engineered or Finger-Jointed Studs for Vertical Applications	0				1	
Yes	e. Oriented Strand Board for Subfloor	1				1	
Yes	f. Oriented Strand Board for Wall and Roof Sheathing	1				1	
TBD	<b>4. Insulated Headers</b>	0		1			
<b>5. Use FSC-Certified Wood</b>							
TBD	a. Dimensional Lumber, Studs and Timber (Minimum 40%)	0				6	
TBD	b. Panel Products (Minimum 40%)	0				3	
<b>6. Use Solid Wall Systems (Includes SIPS, ICFs, &amp; Any Non-Stick Frame Assembly)</b>							
TBD	a. Floors	0				2	
TBD	b. Walls	0				2	
TBD	c. Roofs	0				1	
TBD	<b>7. Energy Heels on Roof Trusses (75% of Attic Insulation Height at Outside Edge of Exterior Wall)</b>	0		1			
<b>8. Install Overhangs and Gutters</b>							
TBD	a. Minimum 16-Inch Overhangs and Gutters	0				1	
TBD	b. Minimum 24-Inch Overhangs and Gutters	0		1			
<b>9. Reduce Pollution Entering the Home from the Garage</b> [*This credit is a requirement associated with J4: EPA IAP]							
TBD	a. Install Garage Exhaust Fan OR Build a Detached Garage	0			1		
TBD	b. Tightly Seal the Air Barrier between Garage and Living Area (Performance Test Required)	0			1		
<b>Total Points Available in Structural Frame and Building Envelope = 39</b>		<b>3</b>					
<b>E. EXTERIOR</b>			<b>Points Available Per Measure</b>				
Yes	<b>1. Use Environmentally Preferable Decking</b>	2				2	
TBD	<b>2. Flashing Installation Techniques Specified and Third-Party Verified</b> [*This credit is a requirement associated with J4: EPA IAP]	0				1	
TBD	<b>3. Install a Rain Screen Wall System</b>	0				2	
Yes	<b>4. Use Durable and Non-Combustible Siding Materials</b>	1				1	
Yes	<b>5. Use Durable and Fire Resistant Roofing Materials or Assembly</b>	2				2	
<b>Total Points Available in Exterior = 8</b>		<b>5</b>					
<b>F. INSULATION</b>			<b>Points Available Per Measure</b>				
<b>1. Install Insulation with 75% Recycled Content</b>							
TBD	a. Walls	0				1	
TBD	b. Ceilings	0				1	
TBD	c. Floors	0				1	
<b>Total Points Available in Insulation = 3</b>		<b>0</b>					
<b>G. PLUMBING</b>			<b>Points Available Per Measure</b>				
<b>1. Distribute Domestic Hot Water Efficiently (Max. 5 points, G1a. Is a Prerequisite for G1b-e)</b>							
TBD	a. Insulate All Hot Water Pipes [*This credit is a requirement associated with J4: EPA IAP]	0		1			1
TBD	b. Use Engineered Parallel Plumbing	0					1
TBD	c. Use Engineered Parallel Plumbing with Demand Controlled Circulation Loop(s)	0					1

# Pleasanton Gateway - Single Family

Pete Kennedy

3685

## Planning Scoresheet

		Points Targeted	Community	Energy	IAQ/Health	Resources	Water
TBD	d. Use Traditional Trunk, Branch and Twig Plumbing with Demand Controlled Circulation Loop(s)	0		1			2
TBD	e. Use Central Core Plumbing	0		1		1	1
<b>2. Water Efficient Fixtures</b>							
Yes	a. High Efficiency Showerheads ≤2.0 Gallons Per Minute (gpm) at 80 psi. (Multiple showerheads shall not exceed maximum flow rates) (CALGreen code if applicable)	3					3
Yes	b. High Efficiency Bathroom Faucets ≤ 1.5 gpm at 60psi (CALGreen code)	1					1
Yes	c. High Efficiency Kitchen and Utility Faucets ≤1.8 gpm (CALGreen code if applicable)	1					1
Yes	3. Install Only High Efficiency Toilets (Dual-Flush or ≤1.28 Gallons Per Flush (gpf)) (CALGreen code if applicable)	2					2
Total Points Available in Plumbing = 12		7					
<b>H. HEATING, VENTILATION &amp; AIR CONDITIONING</b>			Points Available Per Measure				
<b>1. Properly Design HVAC System and Perform Diagnostic Testing</b>							
Yes	a. Design and Install HVAC System to ACCA Manual J, D, and S Recommendations (CALGreen code if applicable) [*This credit is a requirement associated with J4: EPA IAP]	4		4			
TBD	b. Test Total Supply Air Flow Rates [*This credit is a requirement associated with J4: EPA IAP]	0		1			
TBD	c. Third Party Testing of Mechanical Ventilation Rates for IAQ (meet ASHRAE 62.2)	0		1			
<b>2. Install Sealed Combustion Units</b> [*This credit is a requirement associated with J4: EPA IAP]							
TBD	a. Furnaces	0			2		
TBD	b. Water Heaters	0			2		
TBD	3. Install High Performing Zoned Hydronic Radiant Heating	0		1	1		
TBD	4. Install High Efficiency Air Conditioning with Environmentally Preferable Refrigerants	0	1				
<b>5. Design and Install Effective Ductwork</b>							
TBD	a. Install HVAC Unit and Ductwork within Conditioned Space	0		1			
TBD	b. Use Duct Mastic on All Duct Joints and Seams [*This credit is a requirement associated with J4: EPA IAP]	0		1			
TBD	c. Pressure Relieve the Ductwork System [*This credit is a requirement associated with J4: EPA IAP]	0		1			
Yes	6. Install High Efficiency HVAC Filter (MERV 6+) [*This credit is a requirement associated with J4: EPA IAP]	1			1		
TBD	7. No Fireplace OR Install Sealed Gas Fireplace(s) with Efficiency Rating >60% using CSA Standards [*This credit is a requirement associated with J4: EPA IAP]	0			1		
Yes	8. Install ENERGY STAR Bathroom Fans on Timer or Humidistat (CALGreen code if applicable)	1			1		
<b>9. Install Mechanical Ventilation System for Cooling (Max. 4 Points)</b>							
TBD	a. Install ENERGY STAR Ceiling Fans & Light Kits in Living Areas & All Bedrooms	0		1			
N/A	b. Install Whole House Fan (Credit Not Available if H9c Chosen) (CALGreen code if applicable)	0		1			
TBD	c. Automatically Controlled Integrated System with Variable Speed Control	0		3			
<b>10. Advanced Mechanical Ventilation for IAQ</b>							
Yes	a. <b>Required:</b> Compliance with ASHRAE 62.2 Mechanical Ventilation Standards (as adopted in Title 24 Part 6) [*This credit is a requirement associated with J4: EPA IAP]	Y			R		
TBD	b. Advanced Ventilation Practices (Continuous Operation, Sone Limit, Minimum Efficiency, Minimum Ventilation Rate, Homeowner Instructions)	0			1		
TBD	c. Outdoor Air Ducted to Bedroom and Living Areas of Home	0			2		
Yes	11. Install Carbon Monoxide Alarm(s) (or No Combustion Appliances in Living Space and No Attached Garage) [*This credit is a requirement associated with J4: EPA IAP]	1			1		



# Pleasanton Gateway - Single Family

Pete Kennedy

3685

## Planning Scoresheet

		Points Targeted	Community	Energy	IAQ/Health	Resources	Water
Total Points Available in Heating, Ventilation and Air Conditioning = 27		7					
<b>I. RENEWABLE ENERGY</b>			Points Available Per Measure				
Yes	1. Pre-Plumb for Solar Water Heating	1				1	
Yes	2. Install Wiring Conduit for Future Photovoltaic Installation & Provide 200 ft <sup>2</sup> of South-Facing Roof	1				1	
	3. Offset Energy Consumption with Onsite Renewable Generation (Solar PV, Solar Thermal, Wind) <i>Enter % total energy consumption offset, 1 point per 4% offset</i>	0		25			
Total Available Points in Renewable Energy = 27		2					
<b>J. BUILDING PERFORMANCE</b>			Points Available Per Measure				
TBD	1. Building Envelope Diagnostic Evaluations						
	a. Verify Quality of Insulation Installation & Thermal Bypass Checklist before Drywall [*This credit is a requirement associated with J4: EPA IAP]	0		1			
TBD	b. House Passes Blower Door Test [*This credit is a requirement associated with J4: EPA IAP]	0		1			
TBD	c. Blower Door Results are Max 2.5 ACH <sub>50</sub> for Unbalanced Systems (Supply or Exhaust) or Max 1.0 ACH <sub>50</sub> for Balanced Systems (2 Total Points for J1b. and J1c.)	0		1			
TBD	d. House Passes Combustion Safety Backdraft Test	0			1		
25%	2. <b>Required: Building Performance Exceeds Title 24 (Minimum 15%)</b> <i>(Enter the Percent Better Than Title 24, Points for Every 1% Better Than Title 24)</i>	50		≥30			
TBD	3. Design and Build Near Zero Energy Homes <i>(Enter number of points, minimum of 2 and maximum of 6 points)</i>	0		6			
TBD	4. Obtain EPA Indoor airPlus Certification <i>(Total 42 points, not including Title 24 performance; read comment)</i>	0			2		
Yes	5. Title 24 Prepared and Signed by a CABEC Certified Energy Plans Examiner (CEPE)	1		1			
	6. Participation in Utility Program with Third Party Plan Review						
Yes	a. Energy Efficiency Program [*This credit is a requirement associated with J4: EPA IAP]	1		1			
TBD	b. Renewable Energy Program with Min. 30% Better Than Title 24 (High Performing Home)	0		1			
Total Available Points in Building Performance = 45+		52					
<b>K. FINISHES</b>			Points Available Per Measure				
TBD	1. Design Entryways to Reduce Tracked-In Contaminants	0			1		
	2. Use Low-VOC or Zero-VOC Paint (Maximum 3 Points)						
Yes	a. Low-VOC Interior Wall/Ceiling Paints (CALGreen code if applicable) (<50 Grams Per Liter (gpl) VOCs Regardless of Sheen) [*This credit is a requirement associated with J4: EPA IAP]	1			1		
TBD	b. Zero-VOC: Interior Wall/Ceiling Paints (<5 gpl VOCs Regardless of Sheen)	0			2		
Yes	3. Use Low-VOC Coatings that Meet SCAQMD Rule 1113 (CALGreen code if applicable) [*This credit is a requirement associated with J4: EPA IAP]	2			2		
Yes	4. Use Low-VOC Caulks, Construction Adhesives and Sealants that Meet SCAQMD Rule 1168 (CALGreen code if applicable)	2			2		
TBD	5. Use Recycled-Content Paint	0				1	
	6. Use Environmentally Preferable Materials for Interior Finish A) FSC-Certified Wood, B) Reclaimed, C) Rapidly Renewable, D) Recycled-Content or E) Finger-Jointed F) Local						
TBD	a. Cabinets (50% Minimum)	0				3	
TBD	b. Interior Trim (50% Minimum)	0				2	
TBD	c. Shelving (50% Minimum)	0				2	

# Pleasanton Gateway - Single Family

Pete Kennedy

3685

## Planning Scoresheet

		Points Targeted	Community	Energy	IAC/Health	Resources	Water
TBD	d. Doors (50% Minimum)	0				2	
TBD	e. Countertops (50% Minimum)	0				2	
Yes	<b>7. Reduce Formaldehyde in Interior Finish – Meet Current CARB Airborne Toxic Control Measure (ATCM) for Composite Wood Formaldehyde Limits by Mandatory Compliance Dates (CALGreen code if applicable) [*This credit is a requirement associated with J4: EPA IAP]</b>	Y			0		
	<b>8. Reduce Formaldehyde in Interior Finish - Exceed Current CARB ATCM for Composite Wood Formaldehyde Limits Prior to Mandatory Compliance Dates</b>						
TBD	a. Doors (90% Minimum)	0			1		
TBD	b. Cabinets & Countertops (90% Minimum)	0			2		
TBD	c. Interior Trim and Shelving (90% Minimum)	0			1		
TBD	<b>9. After Installation of Finishes, Test of Indoor Air Shows Formaldehyde Level &lt;27ppb</b>	0			3		
Total Available Points in Finishes = 27		5					
<b>L. FLOORING</b>			Points Available Per Measure				
TBD	<b>1. Use Environmentally Preferable Flooring ( Minimum 15% Floor Area)</b> A) FSC-Certified Wood, B) Reclaimed or Refinished, C) Rapidly Renewable, D) Recycled-Content, E) Exposed Concrete, F) Local. <i>Flooring Adhesives Must Meet SCAQMD Rule 1168 for VOCs.</i>	0				4	
No	<b>2. Thermal Mass Floors (Minimum 50%)</b>	0	1				
TBD	<b>3. Low Emitting Flooring (Section 01350, CRI Green Label Plus, Floorscore [*This credit is a requirement associated with J4: EPA IAP])</b>	0			3		
Yes	<b>4. All carpet and 50% of Resilient Flooring is low emitting. (CALGreen code if applicable)</b>	Y					
Total Available Points in Flooring = 8		0					
<b>M. APPLIANCES AND LIGHTING</b>			Points Available Per Measure				
Yes	<b>1. Install ENERGY STAR Dishwasher (Must Meet Current Specifications)</b>	2		1			1
	<b>2. Install ENERGY STAR Clothes Washer</b>						
Yes	a. Meets ENERGY STAR and CEE Tier 2 Requirements (Modified Energy Factor 2.0, Water Factor 6.0 or less)	3		1			2
TBD	b. Meets ENERGY STAR and CEE Tier 3 Requirements (Modified Energy Factor 2.2, Water Factor 4.5 or less)	0					2
	<b>3. Install ENERGY STAR Refrigerator</b>						
Yes	a. ENERGY STAR Qualified & < 25 Cubic Feet Capacity	1		1			
TBD	b. ENERGY STAR Qualified & < 20 Cubic Feet Capacity	0		1			
	<b>4. Install Built-In Recycling Center or Composting Center</b>						
TBD	a. Built-In Recycling Center	0				1	
TBD	b. Built-In Composting Center	0				1	
	<b>5. Install High-Efficacy Lighting and Design Lighting System</b>						
TBD	a. Install High-Efficacy Lighting	0		1			
TBD	b. Install a Lighting System to IESNA Footcandle Standards or Hire Lighting Consultant	0		1			
Total Available Points in Appliances and Lighting = 13		6					
<b>N. OTHER</b>			Points Available Per Measure				
Yes	<b>1. Required: Incorporate GreenPoint Rated Checklist in Blueprints</b> [*This credit is a requirement associated with J4: EPA IAP]	Y				R	
Yes	<b>2. Pre-Construction Kick-Off Meeting with Rater and Subs</b>	1	1				
TBD	<b>3. Homebuilder's Management Staff are Certified Green Building Professionals</b>	0	1				
	<b>4. Develop Homeowner Education</b>						

# Pleasanton Gateway - Single Family

Pete Kennedy

3685

## Planning Scoresheet

		Points Targeted	Community	Energy	IAQ/Health	Resources	Water
Yes	a. Develop Homeowner Manual of Green Features/Benefits (CALGreen code if applicable) [*This credit is a requirement associated with J4: EPA IAP]	2		1			1
TBD	b. Conduct Educational Walkthroughs (Prerequisite is N4a) [*This credit is a requirement associated with J4: EPA IAP]	0			1		
TBD	5. Install a Home System Monitor OR Participate in a Time-of-Use Pricing Program	0		1			
Total Available Points in Other = 6		3					

### O. COMMUNITY DESIGN & PLANNING

<b>1. Develop Infill Sites</b>							
TBD	a. Project is an Urban Infill Development	0	1			1	
No	b. Home(s)/Development is Located within 1/2 Mile of a Major Transit Stop	0	2				
No	<b>2. Build on Designated Brownfield Site</b>	0	3				
<b>3. Cluster Homes &amp; Keep Size In Check</b>							
TBD	a. Cluster Homes for Land Preservation	0	1			1	
No	b. Conserve Resources by Increasing Density (10 Units per Acre or Greater)	0	2			2	
0	c. Home Size Efficiency	0				9	
<b>4. Design for Walking &amp; Bicycling</b>							
5	a. Site Has Pedestrian Access Within 1/2 Mile of Community Services: TIER 1: Enter Number of Services Within 1/2 Mile 1) Day Care 2) Community Center 3) Public Park 4) Drug Store 5) Restaurant 6) School 7) Library 8) Farmer's Market 9) After School Programs 10) Convenience Store Where Meat & Produce are Sold						
7	TIER 2: Enter Number of Services Within 1/2 Mile 1) Bank 2) Place of Worship 3) Laundry/Cleaners 4) Hardware 5) Theater/Entertainment 6) Fitness/Gym 7) Post Office 8) Senior Care Facility 9) Medical/Dental 10) Hair Care 11) Commercial Office or Major Employer 12) Full Scale Supermarket						
	i. 5 Services Listed Above (Tier 2 Services Count as 1/2 Service Value)	1	1				
	ii. 10 Services Listed Above (Tier 2 Services Count as 1/2 Service Value)	0	1				
No	b. Development is Connected with A Dedicated Pedestrian Pathway to Places of Recreational Interest Within 1/4 mile	0	1				
Yes	c. Install Traffic Calming Strategies (Minimum of Two): - Designated Bicycle Lanes are Present on Roadways; - Ten-Foot Vehicle Travel Lanes; - Street Crossings Closest to Site are Located Less Than 300 Feet Apart; - Streets Have Rumble Strips, Bulbouts, Raised Crosswalks or Refuge Islands	2	2				
<b>5. Design for Safety &amp; Social Gathering</b>							
Yes	a. All Home Front Entrances Have Views from the Inside to Outside Callers	1	1				
Yes	b. All Home Front Entrances Can be Seen from the Street and/or from Other Front Doors	1	1				
Yes	c. Orient Porches (min. 100sf) to Streets and Public Spaces	1	1				
Yes	d. Development Includes a Social Gathering Space	1	1				
<b>6. Design for Diverse Households (6a. Is a Prerequisite for 6b. and 6c.)</b>							
TBD	a. All Homes Have At Least One Zero-Step Entrance	0	1				
TBD	b. All Main Floor Interior Doors & Passageways Have a Minimum 32-Inch Clear Passage Space	0	1				
Yes	c. Locate Half-Bath on the Ground Floor	0	1				
No	d. Provide Full-Function Independent Rental Unit	0	1				
Total Achievable Points in Community Design & Planning = 35		7					

### P. INNOVATION

#### A. Site

1. Stormwater Control: Prescriptive Path (Maximum of 3 Points, Mutually Exclusive with PA2.)

Possible Points

# Pleasanton Gateway - Single Family

Pete Kennedy

3685

## Planning Scoresheet

		Points Targeted	Community	Energy	IAQ/Health	Resources	Water
TBD	a. Use Permeable Paving for 25% of Driveways, Patios and Walkways	0	1				
Yes	b. Install Bio-Retention and Filtration Features	2	2				
TBD	c. Route Downspout Through Permeable Landscape	0	1				
TBD	d. Use Non-Leaching Roofing Materials	0	1				
TBD	e. Include Smart Street/Driveway Design	0	1				
TBD	2. Stormwater Control: Performance Path (Mutually Exclusive with PA1): Perform Soil Percolation Test and Capture and Treat 85% of Total Annual Runoff	0	3				
<b>C. Landscape</b>							
TBD	1. Meet Local Landscape Program Requirement	0					2
<b>D. Structural Frame &amp; Building Envelope</b>							
1. Design, Build and Maintain Structural Pest and Rot Controls							
TBD	a. Locate All Wood (Siding, Trim, Structure) At Least 12" Above Soil	0				1	
TBD	b. All Wood Framing 3 Feet from the Foundation is Treated with Borates (or Use Factory-Impregnated Materials) OR Walls are Not Made of Wood	0				1	
TBD	2. Use Moisture Resistant Materials in Wet Areas: Kitchen, Bathrooms, Utility Rooms, and Basements [*This credit is a requirement associated with J4: EPA IAP]	0			1	1	
<b>E. Exterior</b>							
TBD	1. Vegetated Roof (Minimum 25%)	0	2	2			
<b>G. Plumbing</b>							
TBD	1. Greywater Pre-Plumbing (Includes Washing Machine at Minimum)	0					1
TBD	2. Greywater System Operational (Includes Washing Machine at Minimum)	0					2
TBD	3. Innovative Wastewater Technology (Constructed Wetland, Sand Filter, Aerobic System)	0					1
TBD	4. Composting or Waterless Toilet	0					2
TBD	5. Install Drain Water Heat-Recovery System	0		1			
TBD	6. Install a Hot Water Desuperheater	0		2			
<b>H. Heating, Ventilation, and Air Conditioning</b>							
TBD	1. Humidity Control Systems (Only in California Humid/Marine Climate Zones 1,3,5,6,7) [*This credit is a requirement associated with J4: EPA IAP]	0			1		
TBD	2. Design HVAC System to Manual T for Register Design	0		1			
<b>K. Finishes</b>							
TBD	1. Materials Meet SMARt Criteria (Select the number of points, up to 5 points)	0				5	
<b>N. Other</b>							
TBD	1. Detailed Durability Plan and Third-Party Verification of Plan Implementation	0				2	
2. Educational Signage of Project's Green Features							
TBD	a. Promotion of Green Building Practices	0	1				
TBD	b. Installed Green Building Educational Signage	0	1				
3. Innovation: List innovative measures that meet green building objectives. Enter in the number of points in each category for a maximum of 4 points for the measure in the blue cells. Points achieved column will be automatically fill in based on the sum of the points in each category. Points and measures will be evaluated by Build It Green.							
TBD	Innovation: Enter up to 4 Points at right. Enter description here	0	0	0	0	0	0
TBD	Innovation: Enter up to 4 Points at right. Enter description here	0	0	0	0	0	0
TBD	Innovation: Enter up to 4 Points at right. Enter description here	0	0	0	0	0	0
TBD	Innovation: Enter up to 4 Points at right. Enter description here	0	0	0	0	0	0
TBD	Innovation: Enter up to 4 Points at right. Enter description here	0	0	0	0	0	0
Total Achievable Points in Innovation = 33+		2					
<b>Q. CALIFORNIA CALGreen CODE</b>			Possible Points				
Yes	0. Home meets all applicable CALGreen measures listed in above Sections A - P of the GreenPoint Rated checklist.	Y	R				

# Pleasanton Gateway - Single Family

Pete Kennedy

3685

## Planning Scoresheet

		Points Targeted	Community	Energy	IAQ/Health	Resources	Water
<p><i>The following measures are mandatory in the CALGreen code and do not earn points in the GreenPoint Rated Checklist, but have been included in the Checklist for the convenience of jurisdictions.</i></p> <p><i>The GreenPoint Rater is not a code enforcement official. The measures in this section may be verified by the GreenPoint Rater at their own discretion and/or discretion of the building official.</i></p>							
TBD	1. CALGreen 4.106.2 Storm water management during construction.	N					
TBD	2. CALGreen 4.106.3 Design for surface water drainage away from buildings.	N					
TBD	3. CALGreen 4.303.1 As an alternative to prescriptive compliance, a 20% reduction in baseline water use shall be demonstrated through calculation	N					
TBD	4. CALGreen 4.406.1 Joints and openings. Annular spaces around pipes, electric cables, conduits, or other openings in plates at exterior walls shall be protected	N					
TBD	5. CALGreen 4.503.1 Gas fireplace shall be a direct-vent sealed-combustion type. Woodstove or pellet stove shall comply with US EPA Phase II emission limits	N					
TBD	6. CALGreen 4.505.2 Vapor retarder and capillary break is installed at slab on grade foundations.	N					
TBD	7. CALGreen 4.505.3 19% moisture content of building framing materials	N					
TBD	8. CALGreen 702.1 HVAC system installers are trained and certified in the proper installation of HVAC systems.	N					
<b>Total Achievable Points in California Green Code = 0</b>		<b>0</b>					
Summary							
Total Available Points			44	96+	44	109	59
Minimum Points Required			0	30	5	6	9
<b>Total Points Targeted</b>		<b>127</b>	<b>11</b>	<b>60</b>	<b>9</b>	<b>17</b>	<b>30</b>

### Project has met all minimum requirements

- Total Project Score of At Least 30 Points
- Required Measures:
  - A1a, 50% waste diversion by weight
  - H10a, Compliance with ASHRAE 62.2 Mechanical Ventilation Standards
  - J2, 15% above Title 24
  - N1, Incorporate GreenPoint Rated Checklist into blueprints
- Minimum points in specific categories:
  - Energy (30 points)
  - IAQ/Health (5 points)
  - Resources (5 points)
  - Water (9 points)
- All Applicable CALGreen measures in Sections A-F

