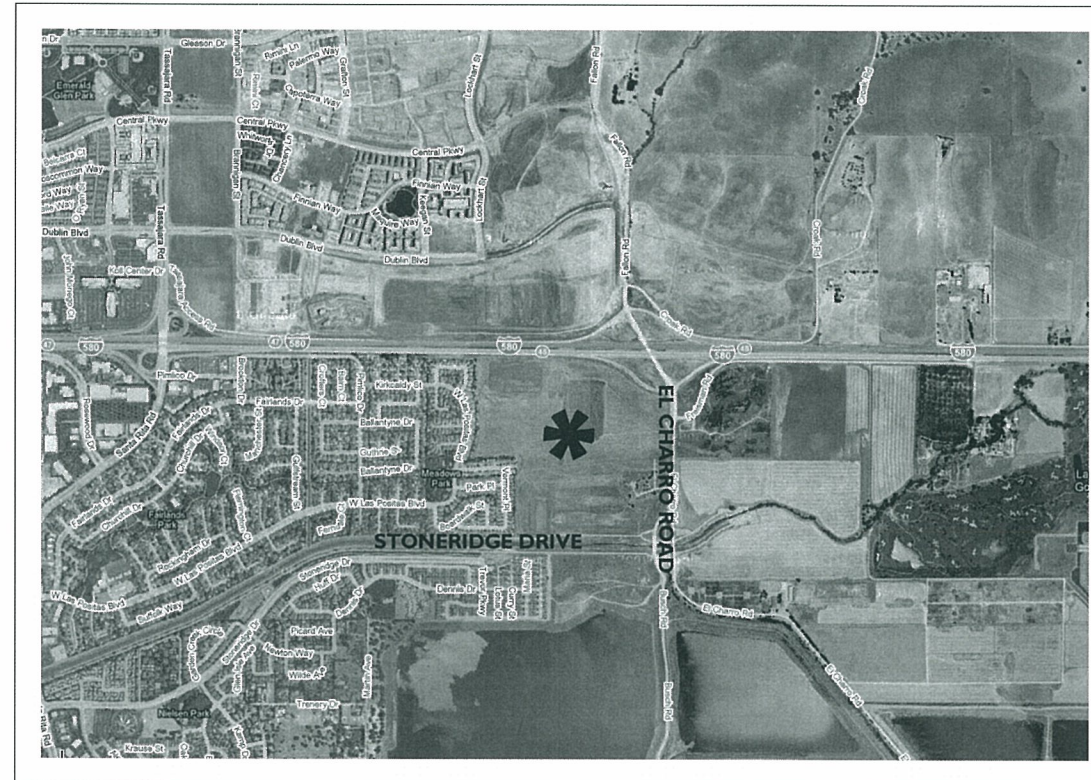


STAPLES RANCH NEIGHBORHOOD PARK PLEASANTON, CALIFORNIA

PUD SUBMITTAL 10/05/09

SHEET INDEX

- L-1 ILLUSTRATIVE SITE PLAN
- L-2 SITE SECTIONS
- L-3 PRELIMINARY TREE LAYOUT
- L-4 PLANT PALETTE
- L-5 MATERIALS PALETTE
- L-6 TENNIS COURT PHOTOMETRICS
- C-1 PRELIMINARY GRADING AND UTILITY PLAN
- C-2 PRELIMINARY GRADING SECTIONS



PROJECT DIRECTORY

APPLICANT
Continuing Life Communities Pleasanton L.L.C.
1940 Levante Street
Carlsbad, CA

LANDSCAPE ARCHITECT
Gates + Associates
2671 Crow Canyon Road
San Ramon, CA

CIVIL ENGINEER
Ruggeri Jensen-Azar & Associates
4690 Chabot Drive, Suite 200
Pleasanton, CA

PUD - 80
RECEIVED
OCT 6 2009
CITY OF PLEASANTON
PLANNING DIVISION

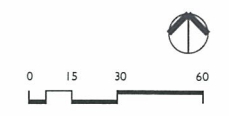
EXHIBIT B

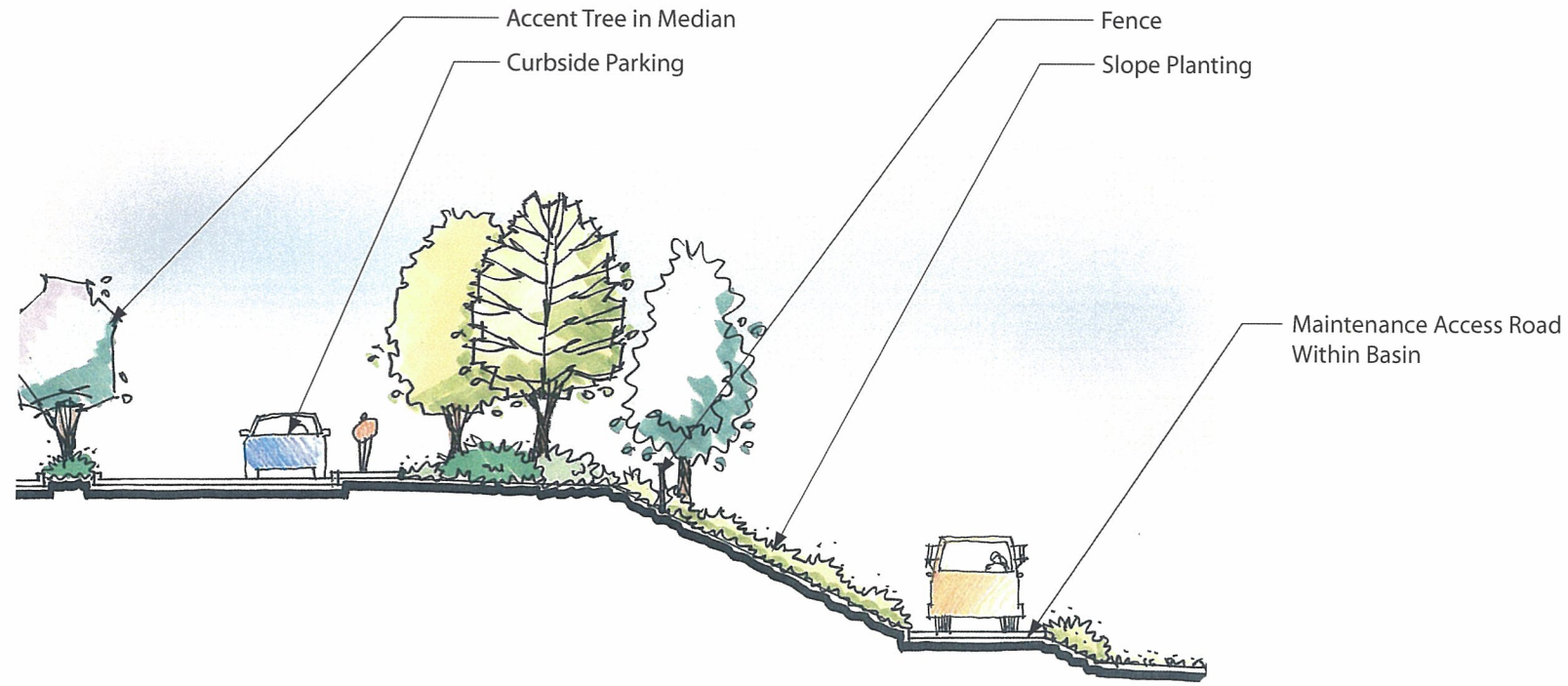


- Lighted Tennis Courts
- Shade Structure with Picnic Table
- Seasonal Pedestrian Access to Basin
- Bike Rack
- Inlet
- Lawn
- Low Stone Walls
- Restroom
- City of Pleasanton Park Sign
- Maintenance Access
- Curbside Parking
- Outflow Pipe
- 8' Decomposed Granite Trail
- Low Stone Walls
- Accent Planting at Entry

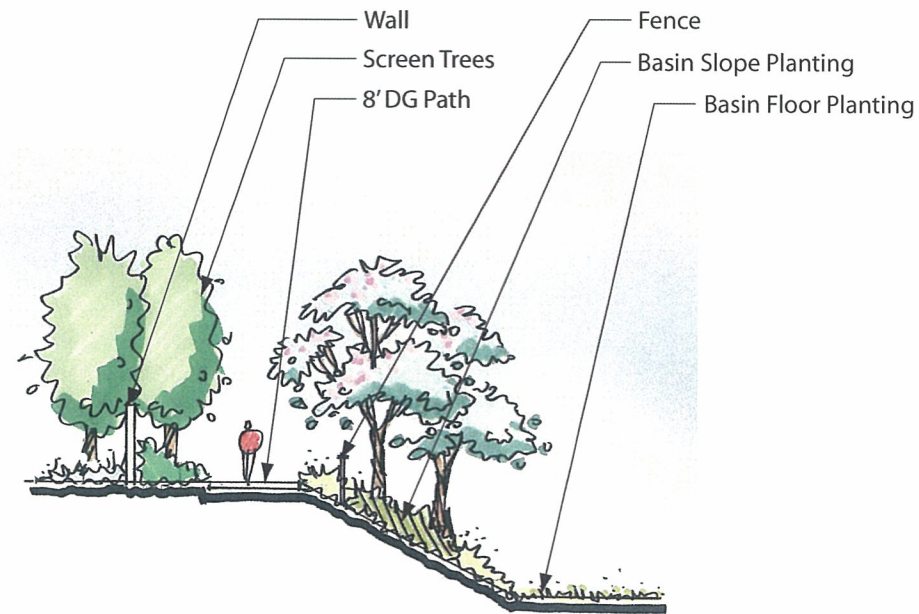
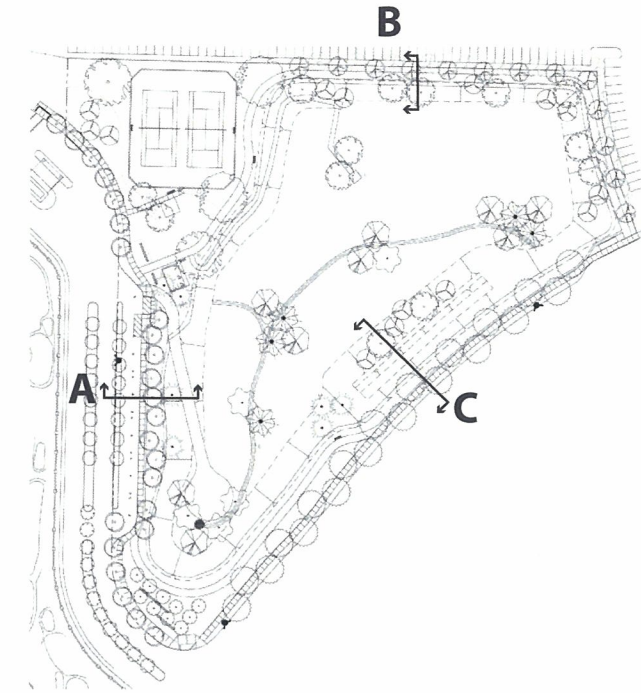
Hydroseeded Basin

- Screen Trees
- Future Boardwalk and Deck (Not included in Phase 1)
- Proposed Bus Stop
- 4' Basin Fence
- Inlet
- Swales
- Weir
- 6' City Sidewalk w/ 2' DG Band
- Observation Bench (typ.)

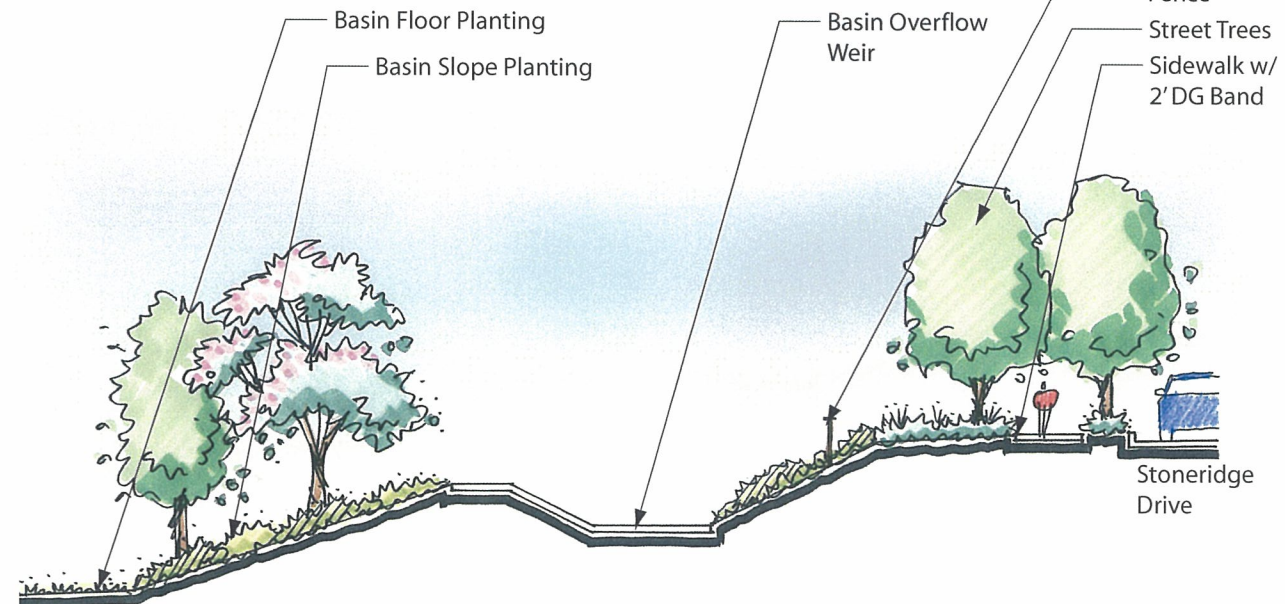




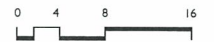
SECTION A

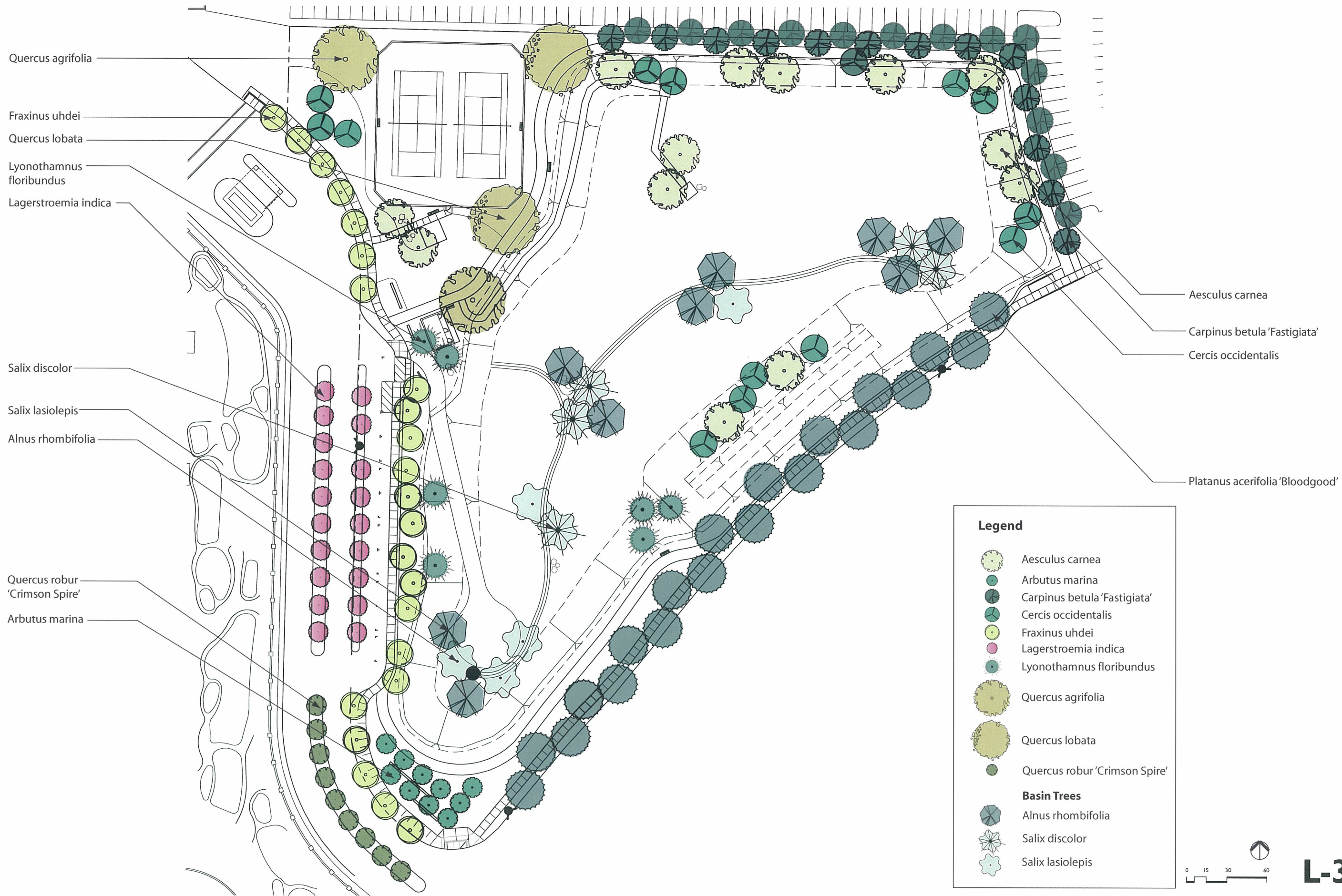


SECTION B



SECTION C





Quercus agrifolia
 Fraxinus uhdei
 Quercus lobata
 Lyonothamnus floribundus
 Lagerstroemia indica

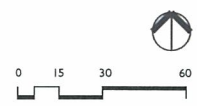
Salix discolor
 Salix lasiolepis
 Alnus rhombifolia

Quercus robur 'Crimson Spire'
 Arbutus marina

Aesculus carnea
 Carpinus betula 'Fastigiata'
 Cercis occidentalis
 Platanus acerifolia 'Bloodgood'

Legend

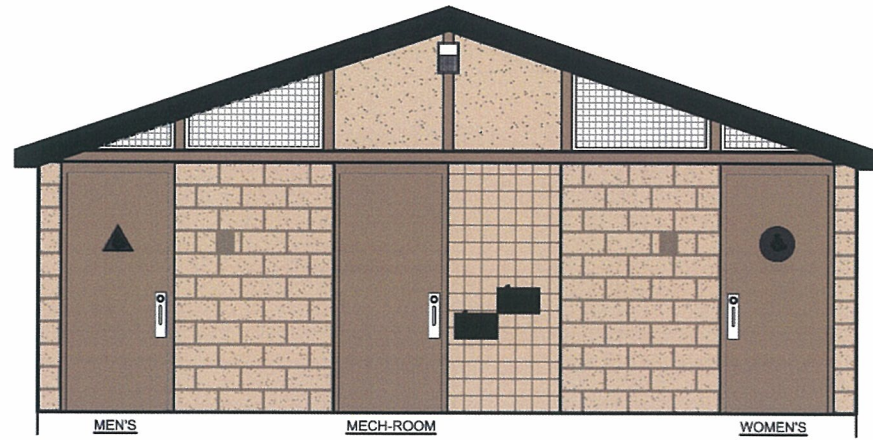
- Aesculus carnea
- Arbutus marina
- Carpinus betula 'Fastigiata'
- Cercis occidentalis
- Fraxinus uhdei
- Lagerstroemia indica
- Lyonothamnus floribundus
- Quercus agrifolia
- Quercus lobata
- Quercus robur 'Crimson Spire'
- Basin Trees**
- Alnus rhombifolia
- Salix discolor
- Salix lasiolepis



L-3

PLANT LIST

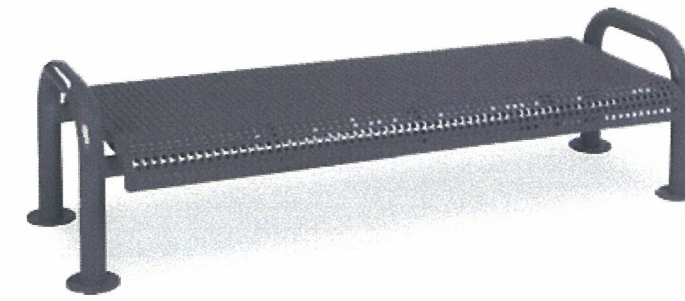
	BOTANICAL NAME	COMMON NAME	SIZE	WATER USAGE		BOTANICAL NAME	COMMON NAME	SIZE	WATER USAGE
TREES					BASIN PLANTING				
D	<i>Aesculus carnea</i>	Red Horse-Chestnut	24" BOX	MOD		<i>Heleocharis acicularis</i>	Needle Spike Rush	1 GAL	HIGH
E	<i>Arbutus 'Marina'</i>	Strawberry Tree	24" BOX	MOD		<i>Juncus patens</i>	Wire Grass	1 GAL	HIGH
D	<i>Carpinus betula 'Fastigiata'</i>	Hornbeam	24" BOX	MOD		<i>Mimulus cardinalis</i>	Scarlet Monkey Flower	1 GAL	MOD-REG
D	<i>Cercis occidentalis</i>	Western Redbud	24" BOX	LOW		<i>Polygonum punctatum</i>	Water Smartweed	1 GAL	HIGH
E	<i>Fraxinus uhdei</i>	Evergreen Ash	24" BOX	LOW		<i>Scirpus californicus</i>	California Bulrush	1 GAL	HIGH
D	<i>Lagerstroemia indica</i>	Crape Myrtle	24" BOX	LOW		<i>Spartina pectinata</i>	Prairie Cord Grass	1 GAL	HIGH
E	<i>Lyonothamnus floribundus</i>	Catalina Ironwood	24" BOX	LOW	BASIN HYDROSEED MIX				
E	<i>Quercus agrifolia</i>	Coast Live Oak	24" BOX	LOW		<i>Agrostis pallens</i>	Thingrass		
D	<i>Quercus lobata</i>	Valley Oak	24" BOX	LOW		<i>Festuca rubra</i>	Molate Fescue		
D	<i>Quercus robur 'Crimson Spire'</i>	English Oak	24" BOX	MOD		<i>Deschampsia cespitosa</i>	Tufted Hairgrass		
BASIN TREES						<i>Juncus effusus</i>	Pacific Rush		
D	<i>Alnus rhombifolia</i>	White Alder	15 GAL	HIGH		<i>Juncus bufonius</i>	Water Rush		
D	<i>Salix discolor</i>	Fussy Willow	15 GAL	HIGH		<i>Carex divulca</i>	Berkley Sedge		
D	<i>Salix lasiolepis</i>	Arroyo Willow	15 GAL	HIGH		<i>Carex praegracilis</i>	Deer Bed Sedge		
						CA Wildflower Mix	Varies		
SHRUBS AND PERENNIALS					STREET TREE				
	<i>Abelia x grandiflora 'Edward Goucher'</i>	Glossy Abelia	5 GAL	MOD	D	<i>Platanus x acerifolia 'Bloodgood'</i>	London Plane Tree	24" BOX	LOW
	<i>Achillea millefolium</i>	Yarrow	1 GAL	LOW	STREETSCAPE SHRUBS AND GROUND COVER (TO MATCH EXISTING STONERIDGE DRIVE)				
	<i>Arctostaphylos d. 'Howard McMinn'</i>	Manzanita	5 GAL	LOW		<i>Lagerstroemia</i> spp.	Crape Myrtle (shrubs)	5 GAL	LOW
	<i>Ceanothus 'Joyce Coulter'</i>	Wild Lilac	5 GAL	LOW		<i>Ceanothus 'Yankee Point'</i>	Wild Lilac	5 GAL	LOW
	<i>Dodonaea viscosa 'Purpurea'</i>	Purple Hop Bush	5 GAL	LOW		<i>Hemerocallis 'Stella d'oro'</i>	Dwarf Yellow Daylily	5 GAL	MED
	<i>Escallonia frutescens</i>	Escallonia	5 GAL	MED		<i>Erigeron karwinskianus</i>	Santa Barbara Daisy	1 GAL	LOW
	<i>Echechozia californica</i>	California Poppy	1 GAL	LOW		<i>Rosmarinus officinalis</i>	Rosemary	5 GAL	LOW
	<i>Hemerocallis</i> spp.	Day Lily	5 GAL	MED					
	<i>Heuchera elegans</i>	Coral Belle	1 GAL	LOW					
	<i>Iris douglasiana</i>	Douglas Iris	5 GAL	LOW					
	<i>Penstemon heterophyllus</i>	Foothill penstemon	5 GAL	LOW					
	<i>Raphiolepis indica</i>	Indian Hawthorn	5 GAL	LOW					
	<i>Rosa flower carpet</i> var.	Carpet Rose	2 GAL	LOW					
	<i>Salvia apiana</i>	White Sage	5 GAL	LOW					
	<i>Salvia clevelandii</i>	Cleveland Sage	5 GAL	LOW					
	<i>Salvia spathacea</i>	Hummingbird Sage	5 GAL	LOW					
GRASSES									
	<i>Calamagrostis foliosa</i>	Cape Mendocino Reedgrass	5 GAL	LOW					
	<i>Festuca californica</i>	California Fescue	5 GAL	LOW					
	<i>Festuca idahoensis</i>	Idaho Fescue	5 GAL	LOW					
	<i>Festuca rubra</i>	Red Fescue	5 GAL	LOW					
	<i>Helictotrichon sempervirens</i>	Blue Oat Grass	5 GAL	LOW					
	<i>Muhlenbergia rigens</i>	Deer Grass	5 GAL	LOW					
GROUNDCOVERS									
	<i>Ceanothus griseus horizontalis</i>	Wild Lilac	5 GAL	LOW					
	<i>Ceanothus 'Yankee Point'</i>	Wild Lilac	5 GAL	LOW					
	<i>Gazania</i> spp.	Gazania	1 GAL	MED					



Restroom
 The Public Restroom Company 12'x24'
 Precision Block with Standing Seam Metal Roof
 Wall Color : Frazee CL-2745D (Magic Eye)
 Trim, Door & Roof Color: Frazee CL-2636N (Lumber jack)



Green Screen Panels
 Green Screen Wall Mounted Panels
 (Proposed for Restroom Walls)



Backless Bench
 Wabash Valley CN425D - 6' Bench - Port./Surf. Mt.
 Diamond Pattern - Black



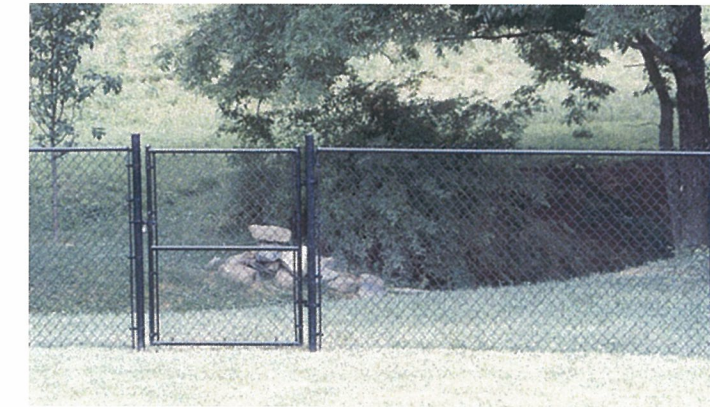
Trash Receptacle
 Wabash Valley LR300D 32 Gallon
 Diamond Pattern - Black



Shade Structure
 Litchfield Landscape Elements Model 8116P



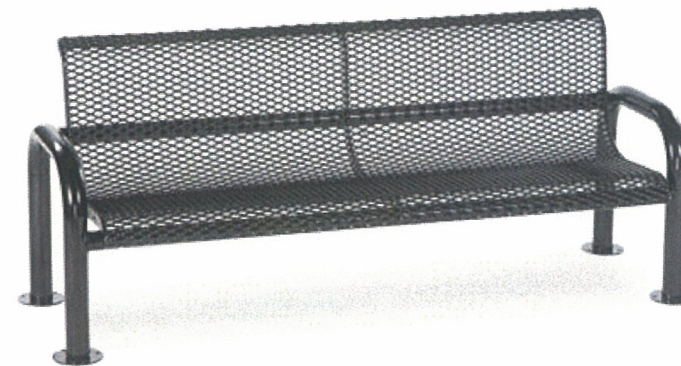
Picnic Table
 Wabash Valley DS101D - 6' Table- S.M.
 Diamond Pattern - Black



Basin Fencing
 Black Vinyl Coated Chain Link - 4' high



Bike Rack
 BRP Enterprises - Elements HU-08



Bench with Back
 Wabash Valley CN420D - 6' Bench - Port./Surf. Mt.
 Diamond Pattern - Black



Tennis Court Fencing
 Black Vinyl Coated Chain Link - 12' high

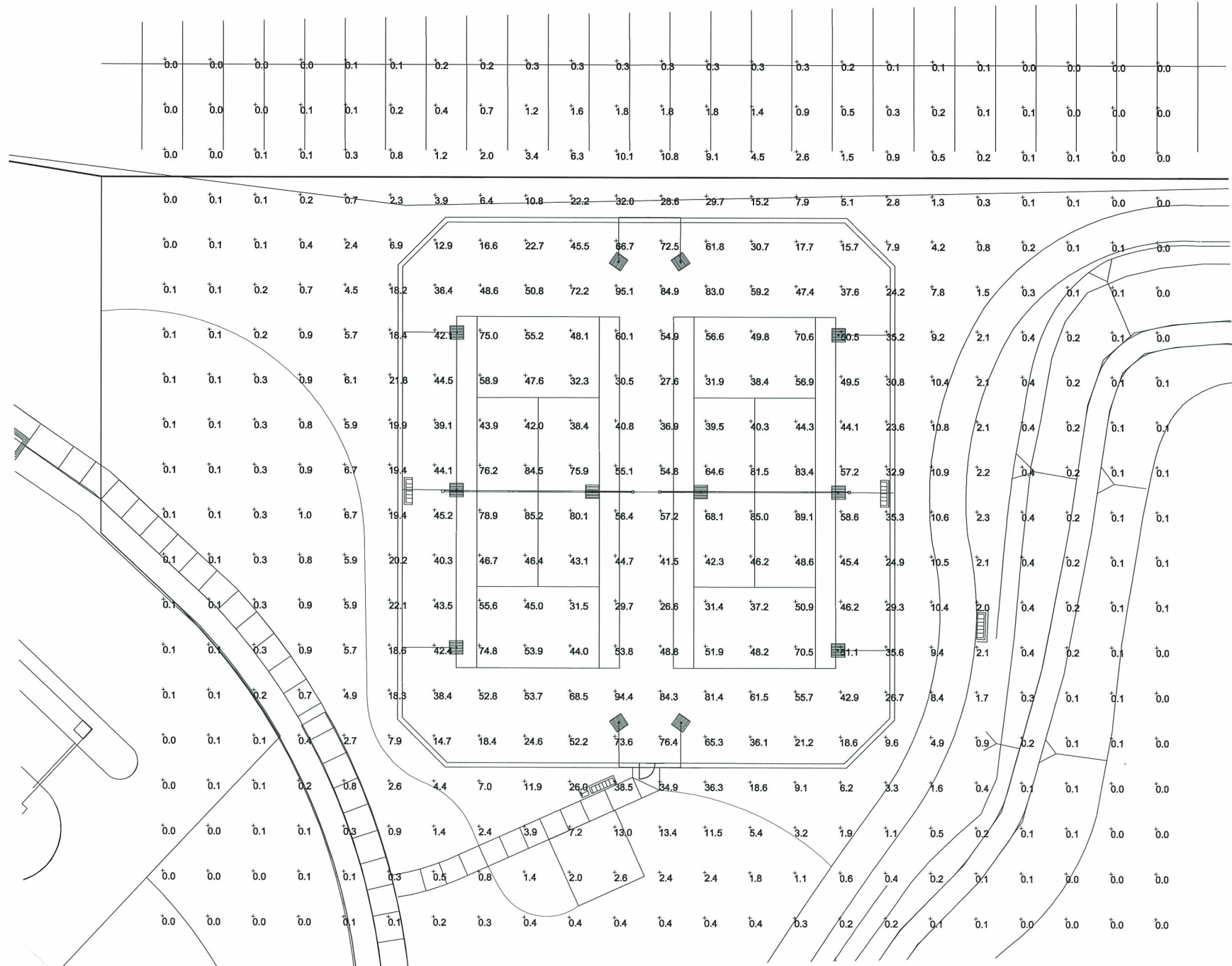


Tennis Court Lighting
 Visionaire Lighting - Advantage

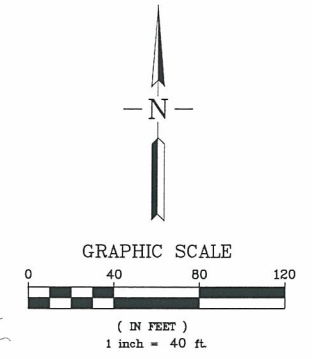
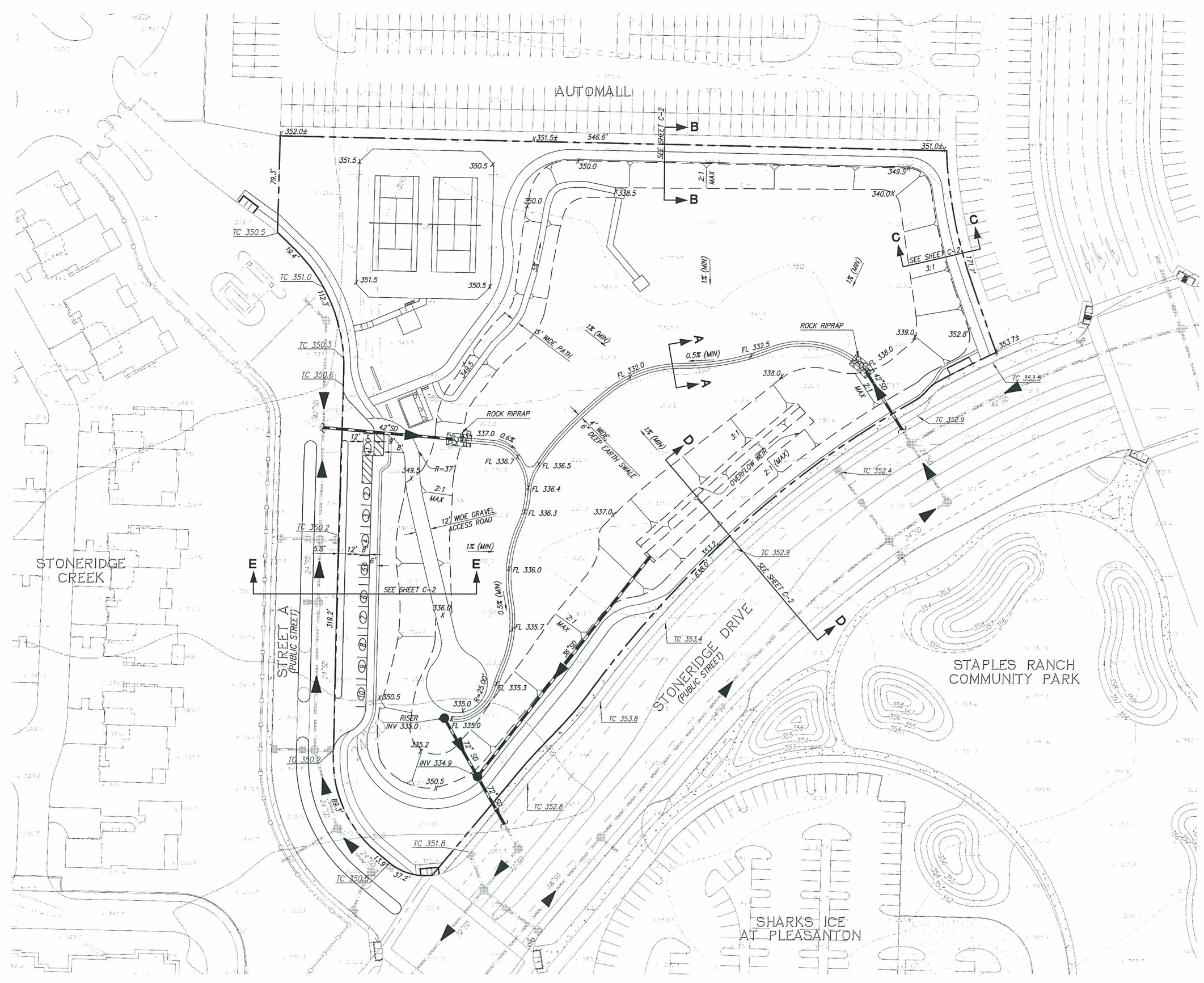
Luminaire Schedule						
Symbol	Qty	Label	Arrangement	Lumens	LLF	Description
	6	C	SINGLE	82000	1.000	Visionaire Advantage ADV-2 T4T-750PS-Single PHLPS@ 24' mtg. ht.
	1	D	BACK-BACK	82000	1.000	Visionaire Advantage ADV-2 T4T-750PS-Back-Back PHLPS@ 24' mtg. ht.
	2	E	2 @ 70 DEGREES	82000	1.000	Visionaire Advantage ADV-2 T4T-750PS-D70° PHLPS @ 24' mtg. ht.

Calculation Summary							
Label	CalcType	Units	Avg	Max	Min	Avg/Min	Max/Min
CalcPts	Illuminance	Fc	16.17	95.1	0.0	N.A.	N.A.
StatArea	Illuminance	Fc	55.30	89.1	31.4	1.76	2.84

Visionaire Lighting
 Photometric Study:
 #PB093009GW1
 Staples Ranch
 Neighborhood Park
 Tennis Court
 GATES + ASSOCIATES
 Wentworth Lighting
 Date:09/30/09



L-6



PRELIMINARY ESTIMATED EARTHWORK QUANTITIES

ITEMS	CUT (C.Y.)	FILL (C.Y.)
BASIN	37,400	---
TOTAL	37,400	---

PRELIMINARY GRADING AND UTILITY PLAN
STAPLES RANCH NEIGHBORHOOD PARK

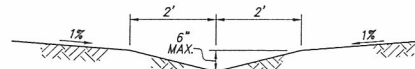
CITY OF PLEASANTON, ALAMEDA COUNTY, CALIFORNIA

RJA
RUGGERI-JENSEN-AZAR
ENGINEERS • PLANNERS • SURVEYORS
4600 CHARLOT DRIVE, SUITE 200 PLEASANTON, CA 94588
PHONE (925) 227-9100 FAX (925) 227-9100

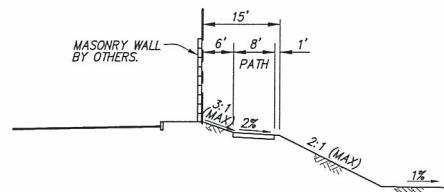
C-1

DATE: OCTOBER 2, 2009 JOB NO. 0110565

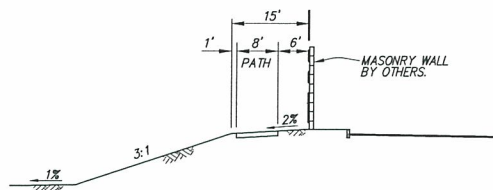
C:\LAPR2001\0110565\PP-8\SWI\09PP-0110565.DWG 10/2/2009 4:15:26 AM RJSBZ FRG



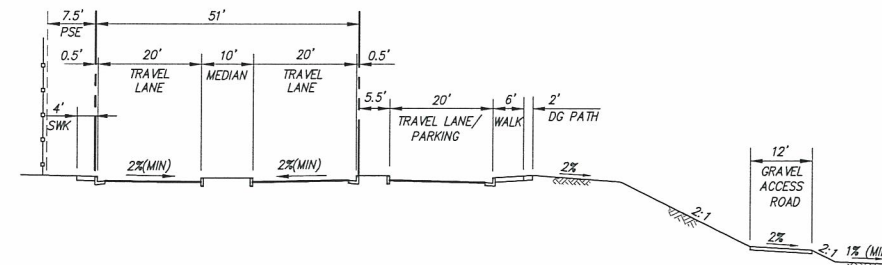
SECTION A-A
NOT TO SCALE



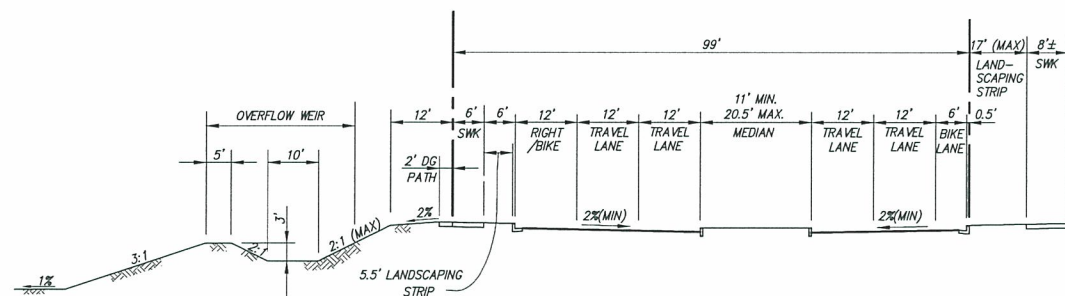
SECTION B-B
NOT TO SCALE



SECTION C-C
NOT TO SCALE



SECTION E-E
NOT TO SCALE



SECTION D-D
NOT TO SCALE

PRELIMINARY GRADING SECTIONS STAPLES RANCH NEIGHBORHOOD PARK

CITY OF PLEASANTON, ALAMEDA COUNTY, CALIFORNIA



RUGGERI-JENSEN-AZAR
ENGINEERS • PLANNERS • SURVEYORS
4600 CHABOT DRIVE, SUITE 100 PLEASANTON, CA 94588
PHONE: (925) 227-9100 FAX: (925) 227-3300

C-2

DATE: OCTOBER 2, 2009 JOB NO. 0110565